

Old Rinchem Site Investigation Update

Prepared by:

Rinchem Company, Inc.
6133 Edith NE
Albuquerque, New Mexico
Phone: (505) 344-9006

April 14, 1995

*Meeting 4/14/95
@ RCI*



WE DO IT WELL ... BECAUSE WE CARE

Agenda
Rinchem-NMED Meeting ,4/14/95, The Old Rinchem Site

1. Introduction (15 min.)
 - a. Who is Rinchem, and what is our commitment.
 - b. Areas of agreement.
 - c. Objectives of the meeting.

2. Rinchem's Presentation (30 min.)
 - a. History of the site.
 - b. Geology and hydrology.
 - c. Current site investigations.
 - d. Investigations yet to be conducted.

3. NMED Presentation (1 hour)
 - a. Site conditions and data interpretation.
 - b. What is needed to complete site investigation and remediation.

4. Discussion (45 min.)

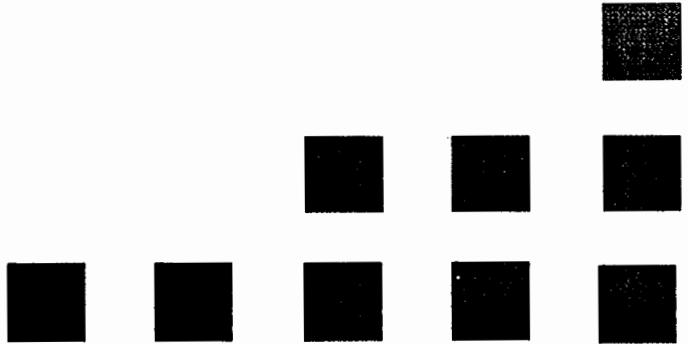


5. Summary (15 min.)



Rinchem Company, Inc.

Rinchem's Vision:

Rinchem Company, Inc. is a world class provider of environmental services..... in the making. What we are now is excellent. What we are becoming is *infinitely* and *inconceivably* better.






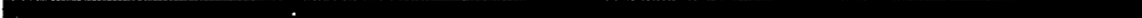
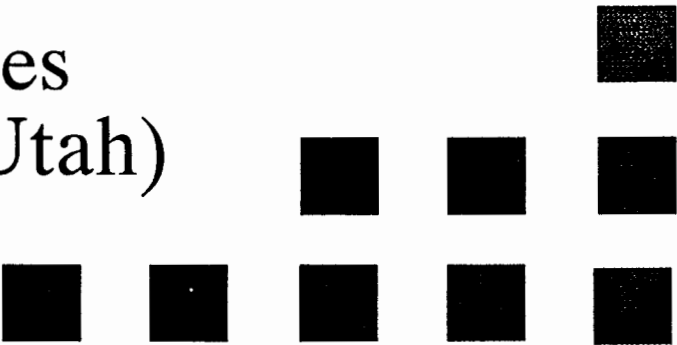
Rinchem Company, Inc.

Founded:

- ◇ 1976 Albuquerque
- ◇ Two People
- ◇ To distribute industrial chemicals

Purchased - 1983


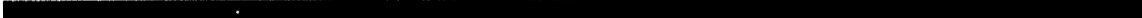
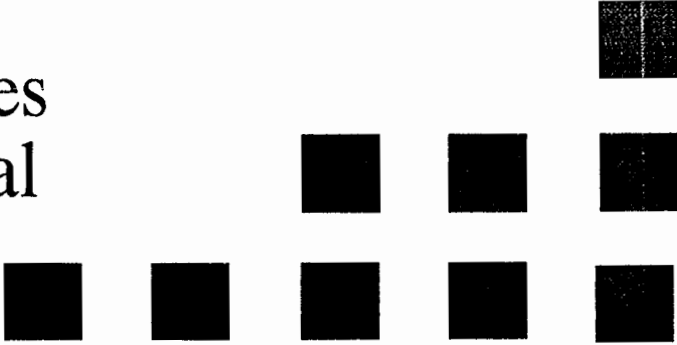
Currently: 80+ People

- ◇ Albuquerque
 - ◇ Chaparral (El Paso)
 - ◇ Juarez, Mexico
 - ◇ Sandia National Laboratories
 - ◇ Dugway Proving Ground (Utah)
 - ◇ American Fork (Utah)
- 
- 
- 



Rinchem Company, Inc.

Seven Environmental Services

- ◇ Chemical Distribution
 - ◇ Public Warehousing
 - ◇ Chemical & Waste Transportation
 - ◇ Waste Stream Management
 - ◇ Technical Services/Environmental Restoration
 - Pollution Prevention
 - Urgent Site Response
 - Chronic Site Response
 - ◇ Comprehensive Chemical Services
 - ◇ Health, Safety and Environmental Training
- 
- 
- 

4

BASIC ASSUMPTIONS

1. There is chlorinated solvent groundwater contamination under and around the Old Rinchem Site.
2. Because of Rinchem's use of the property from 1976 to 1983 for storage of hazardous materials and waste, Rinchem is by definition a Potentially Responsible Party.





5

BASIC ASSUMPTIONS (continued)

3. Some level of threat to public health does exist and the site must be assessed to determine appropriate response to the threat.
4. Rinchem has consistently expressed and demonstrated commitment to finance and conduct an investigation and study the alternatives.





6

BASIC ASSUMPTIONS (continued)

5. Rinchem has developed a work plan and expended approximately \$200,000 in implementing the plan.
6. Rinchem has made its plans and results known to the regulatory community. The regulatory processes that were initiated when the site was officially proposed for inclusion on the National Priority List have precluded regulators from technical guidance or support and from informal cooperation.





BASIC ASSUMPTIONS (continued)

7. The ranking of this half acre as one of the nation's premier uncontrolled and abandoned hazardous waste sites is caused by assigning unsupported values to Hazard Ranking System factors. The use of these unsupported data forces the process down the same lengthy, costly path as if the site had been a huge chemical landfill.



Agenda

1. INTRODUCTION

- WHO IS RINCHEM AND WHAT IS OUR COMMITMENT
- AREAS OF AGREEMENT
- OBJECTIVES OF THE MEETING

2. RINCHEM COMPANY, INC. PRESENTATION:

- HISTORY OF THE SITE
- GEOLOGY AND HYDROLOGY
- CURRENT INVESTIGATIONS
- INVESTIGATIONS YET TO BE CONDUCTED

3. NEW MEXICO ENVIRONMENT DEPARTMENT PRESENTATION:

- SITE CONDITIONS AND DATA INTERPRETATIONS
- WHAT IS NEEDED TO COMPLETE INVESTIGATION AND REMEDIATION

4. DISCUSSION

5. SUMMARY



MEETING OBJECTIVES

- * BRING EVERYONE UP-TO-DATE ON THE OLD RINCHEM SITE
- * IDENTIFY NMED'S CONCERNS WITH THE OLD RINCHEM SITE
- * REACH AN UNDERSTANDING OF WHAT IS NEEDED TO COMPLETE THE SITE INVESTIGATION AND REMEDIATION
- * OBTAIN A COMMITMENT FOR COMMUNICATION ON ISSUES WHICH ARE NOT RESOLVED



OLD RINCHEM SITE

- * **Site Orientation**
- * Site Hydrology
- * Site Investigations
- * Further Investigations



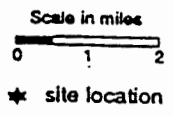
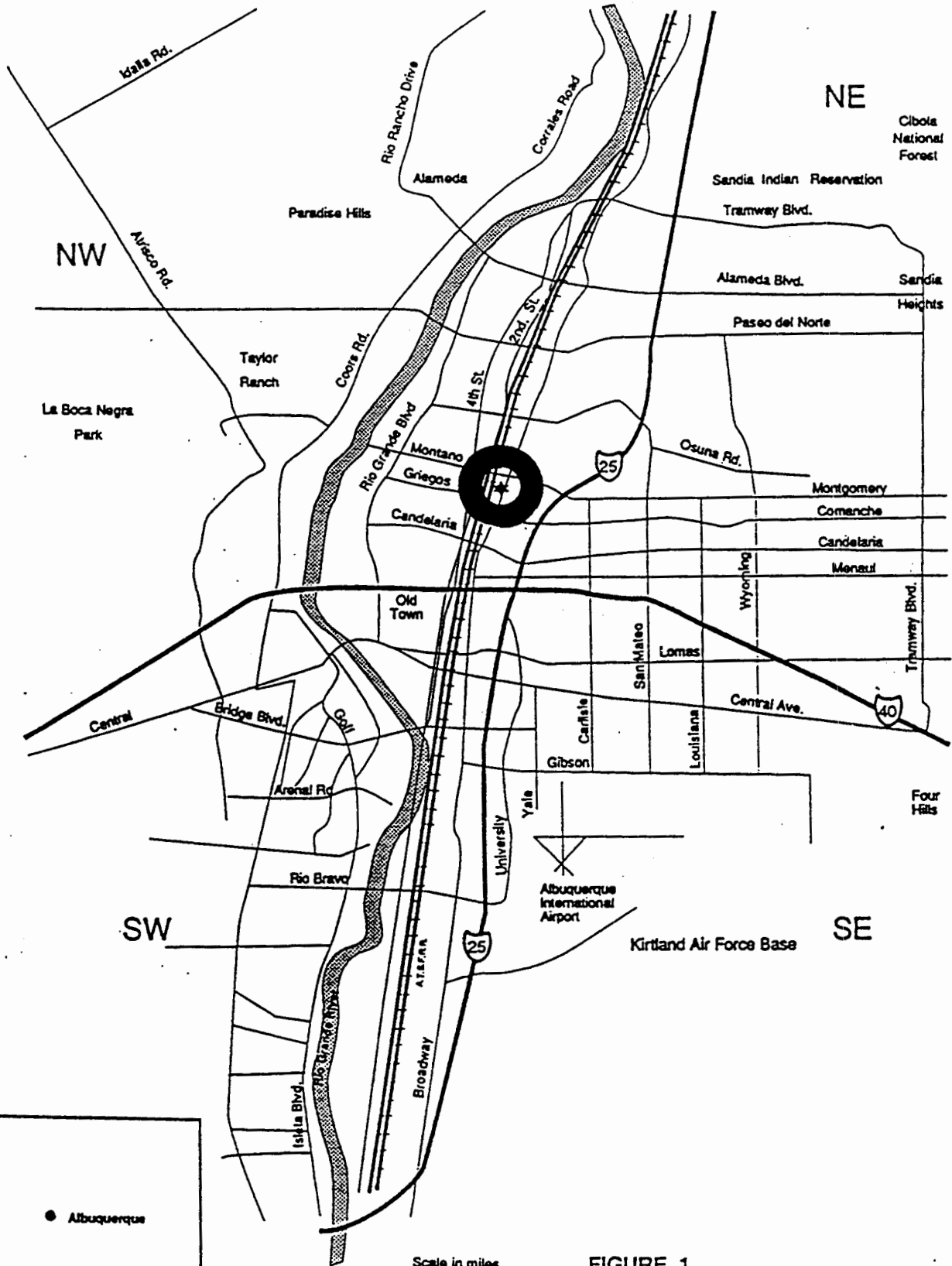
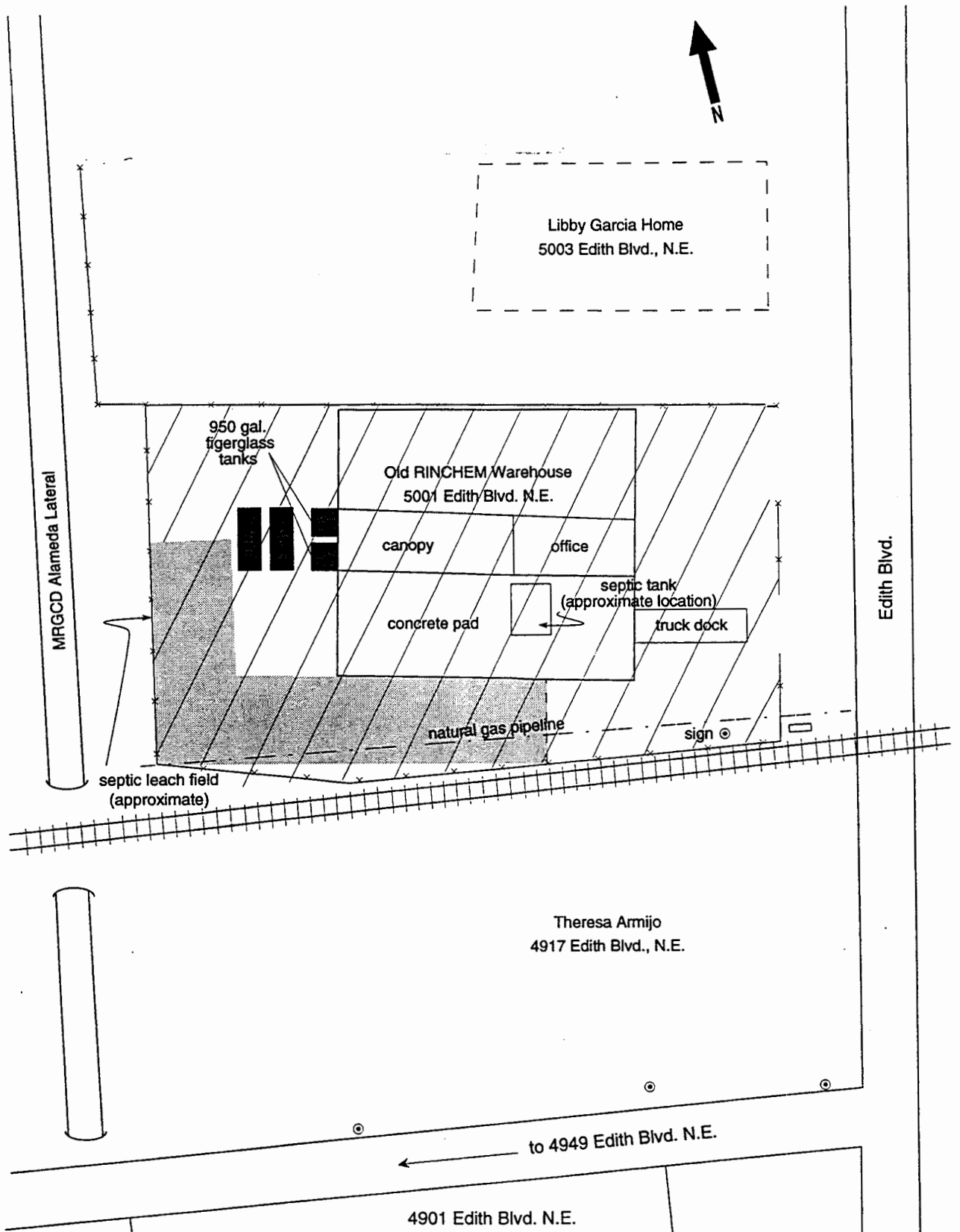


FIGURE 1

Site Location Map
Rinchem Old Site
Billings & Associates, Inc. June, 1993



○ pole location


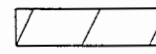
 septic leach field
 site as leased and operated by RINCHEM CO. from 1976-1983

FIGURE 2

Rinchem Old Site 1984
Rinchem Old Site
Billings & Associates, Inc. May, 1993

CHRONOLOGY OF PROPERTY USE

- 1940 - 1976: Various Industries including
- * Electronics Assembly
 - * Hydraulics
- 1976 - 1983: Rinchem
- * Site well "contaminated"
 - * No documented release of halogenated solvents
 - * Waste transfer station
- 1984 - 1995: Janco Sheet Metal
- * Corrugated steel fabrication



CHRONOLOGY OF REGULATORY INVOLVEMENT

- 1983: Rinchem requests EPA assistance
- * Certify clean
- 1984 State inspections
- * Soil samples
 - * Well sample
 - * Poor quality of water in area
- 1988: State inspection
- * install wells and soil borings
 - * analyze soil and water samples
 - * hazard ranking
- 1992: Proposed for NPL



OLD RINCHEM SITE

- * Site Orientation
- * **Site Hydrology**
- * Site Investigations
- * Further Investigations



BASIS FOR UNDERSTANDING SITE HYDROGEOLOGY

Wells: 13 installed and monitored

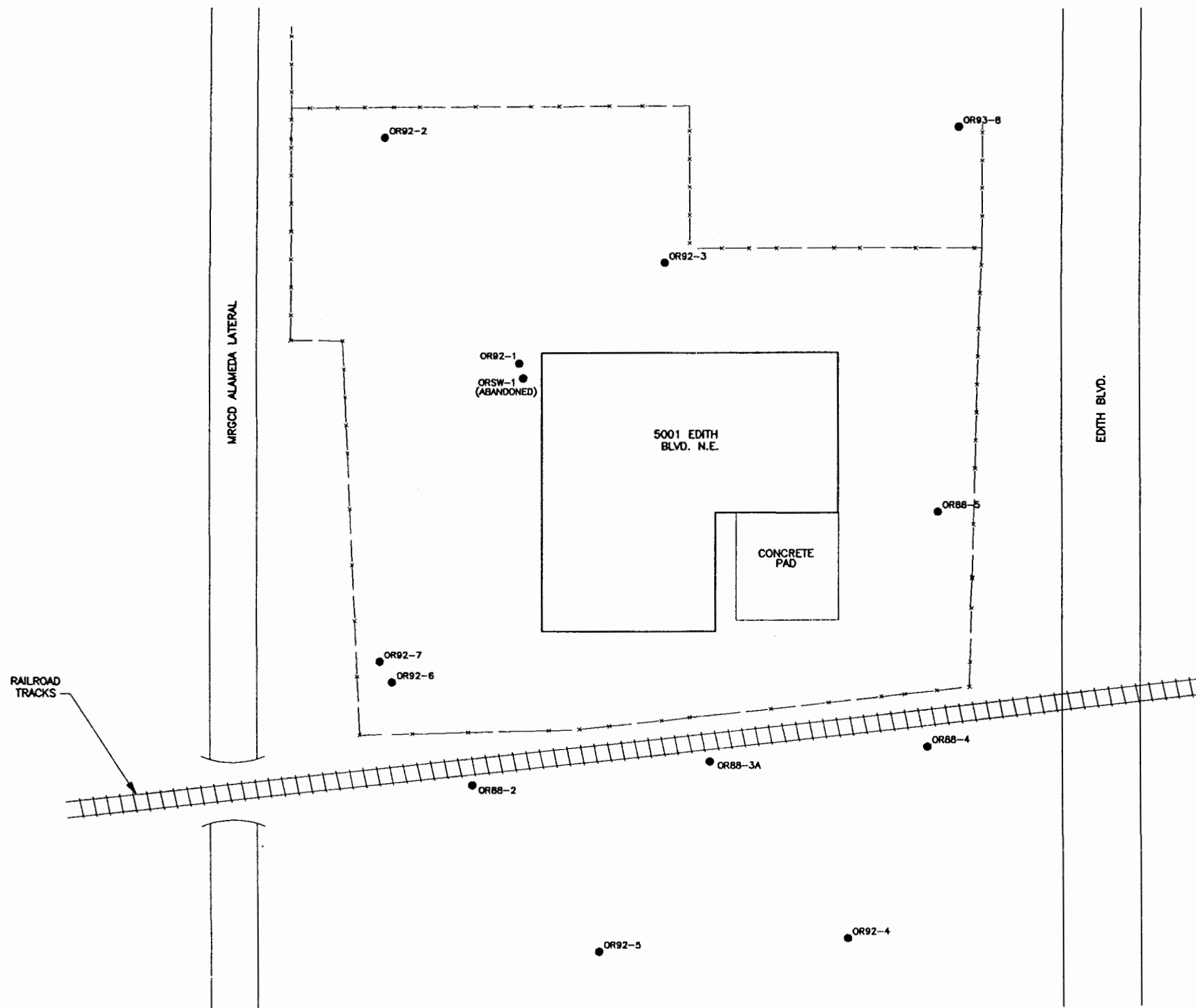
- * Sampled semiannually since 1992
- * CLP Laboratory Quality
- * Split samples with NMED
- * Water level monitoring

Soil Borings: 45 borings drilled, 79 samples analyzed

- * Soil samples
- * Surface to 50 feet

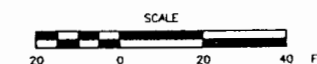


DRAWING NUMBER
94-164-E3



LEGEND:

OR88-4 ● MONITORING WELL LOCATION AND DESIGNATION

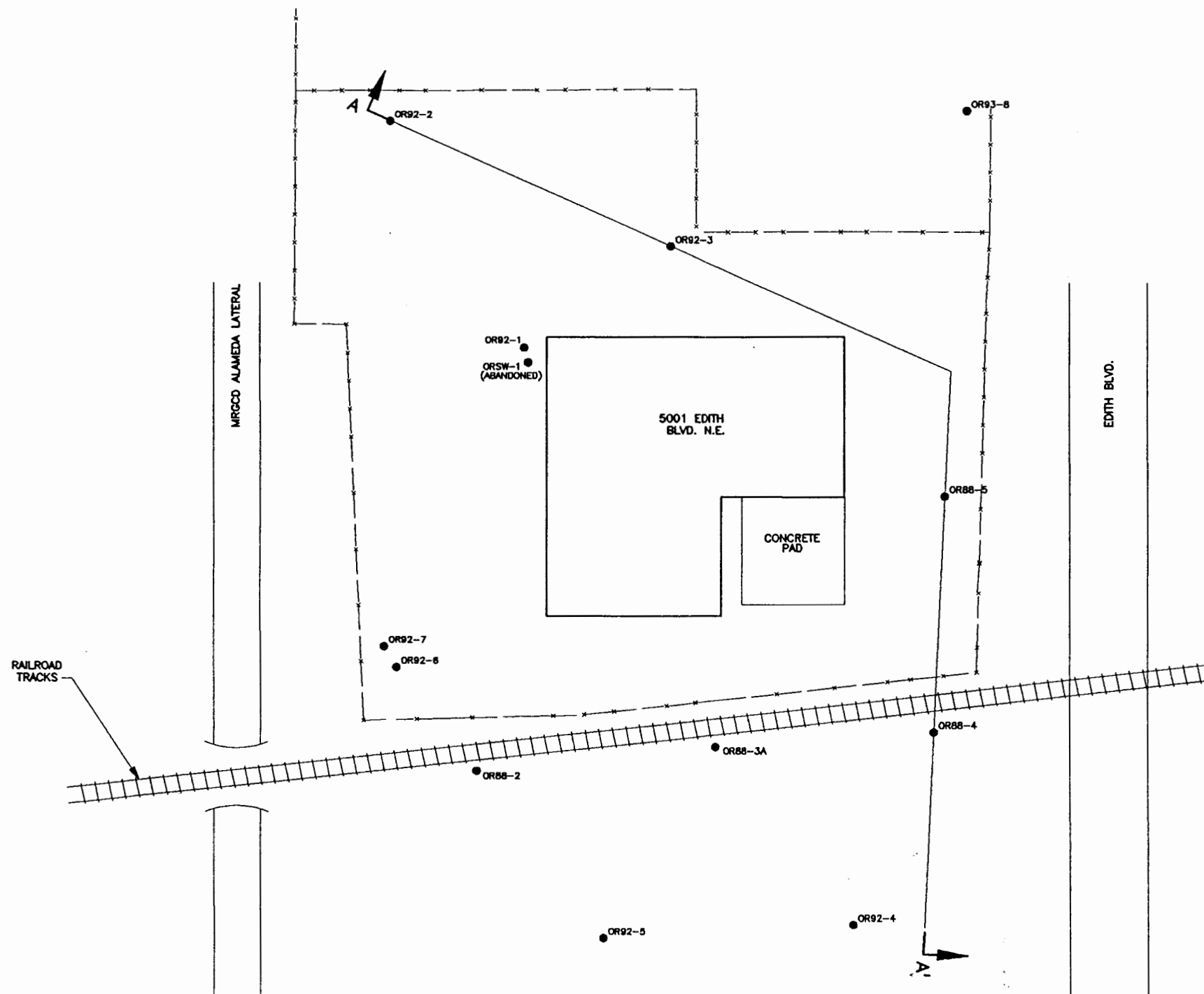


MONITORING WELL LOCATIONS
AT OLD RINCHEM SITE
PREPARED FOR
RINCHEM COMPANY, INC.
ALBUQUERQUE, NEW MEXICO

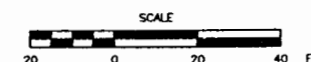
No.	ISSUED FOR PRESENTATION	S.B.E.		
	DATE	ISSUE / REVISION	DWN. BY	CK'D BY AP'D BY

DATE: 3-30-95	FIGURE 1	DRAWING NUMBER
SCALE: AS SHOWN		94-164-E3

DRAWING NUMBER
94-164-E6



LEGEND:
 ● OR88-4 MONITORING WELL LOCATION AND DESIGNATION

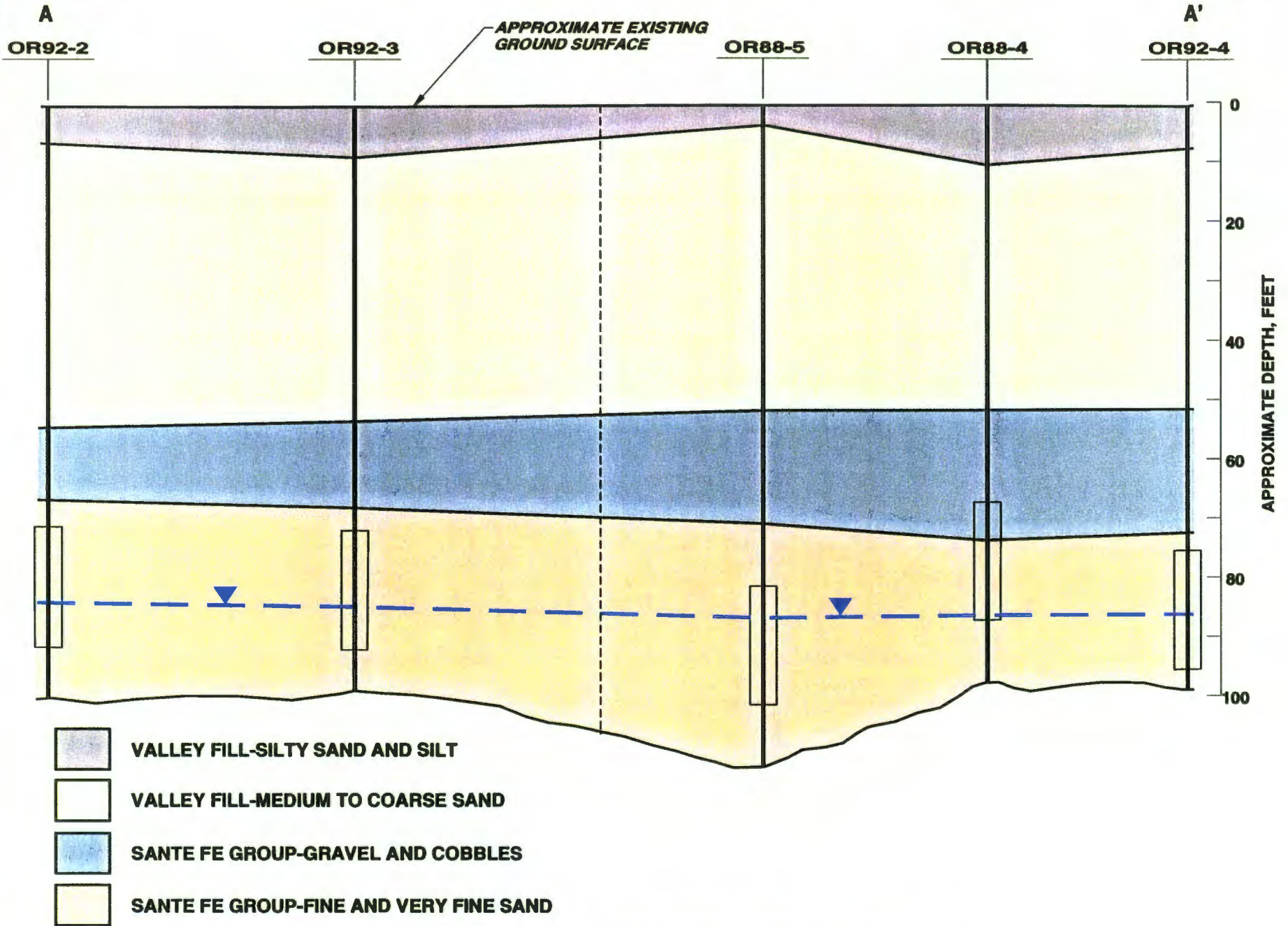


GENERALIZED CROSS SECTION
 A-A' LOCATION
 AT OLD RINCHAM SITE
 PREPARED FOR
RINCHAM COMPANY, INC.
ALBUQUERQUE, NEW MEXICO

△	ISSUED FOR PRESENTATION	S.B.E.		
No.	DATE	ISSUE / REVISION	DWN. BY	CK'D BY
			AP'D BY	

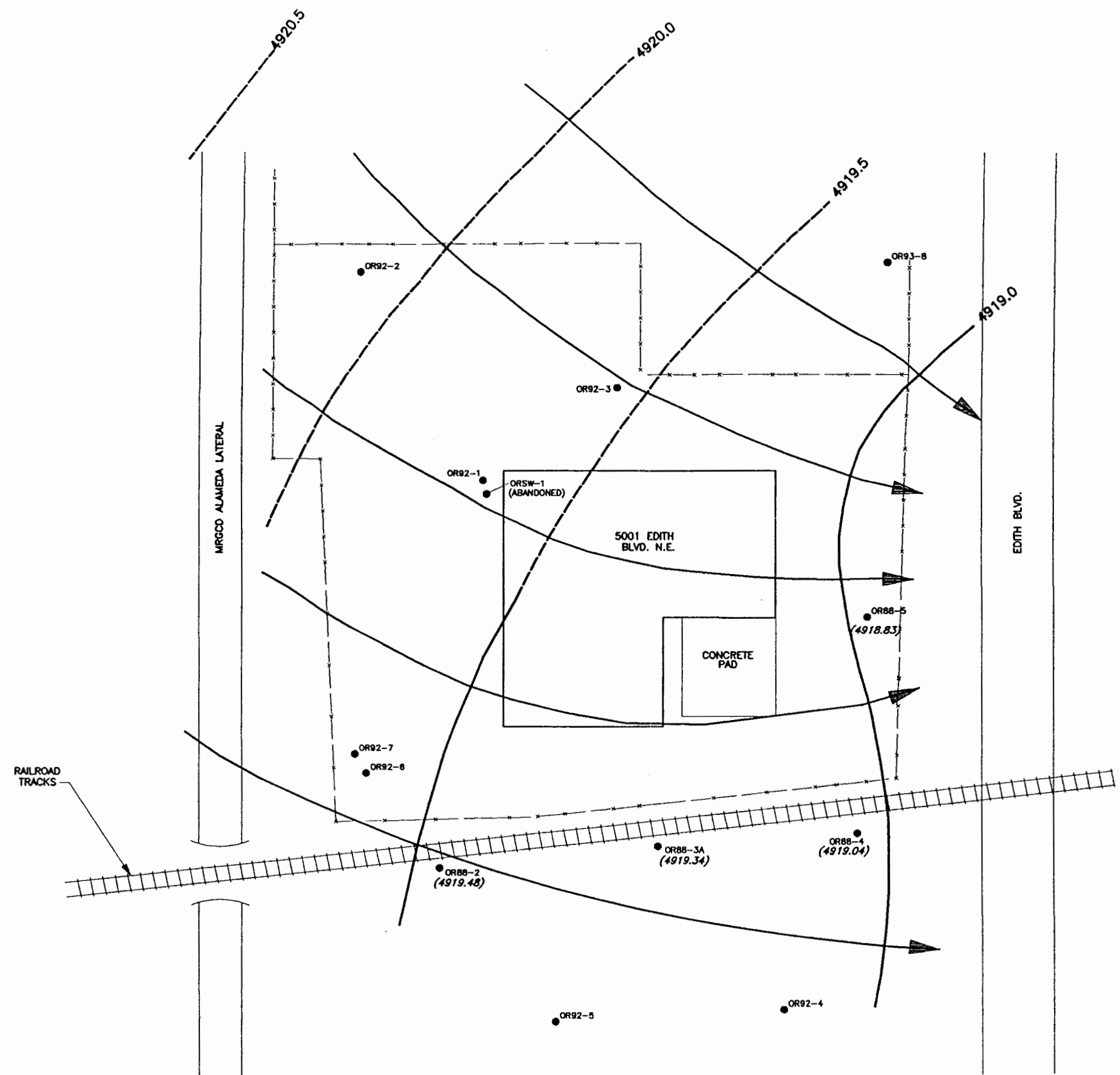
DATE: 4-5-95	FIGURE 1	DRAWING NUMBER
SCALE: AS SHOWN		94-164-E6

94-164-B7

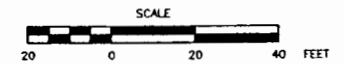


GENERALIZED CROSS SECTION A-A'

DRAWING NUMBER
94-164-E14



- LEGEND:**
- OR88-4 MONITORING WELL LOCATION AND DESIGNATION
 - (4918.83) WATER LEVEL ELEVATION, FEET ABOVE MEAN SEA LEVEL
 - 4919.0 WATER LEVEL ELEVATION CONTOUR LINE
 - ➔ DIRECTION OF GROUND WATER FLOW



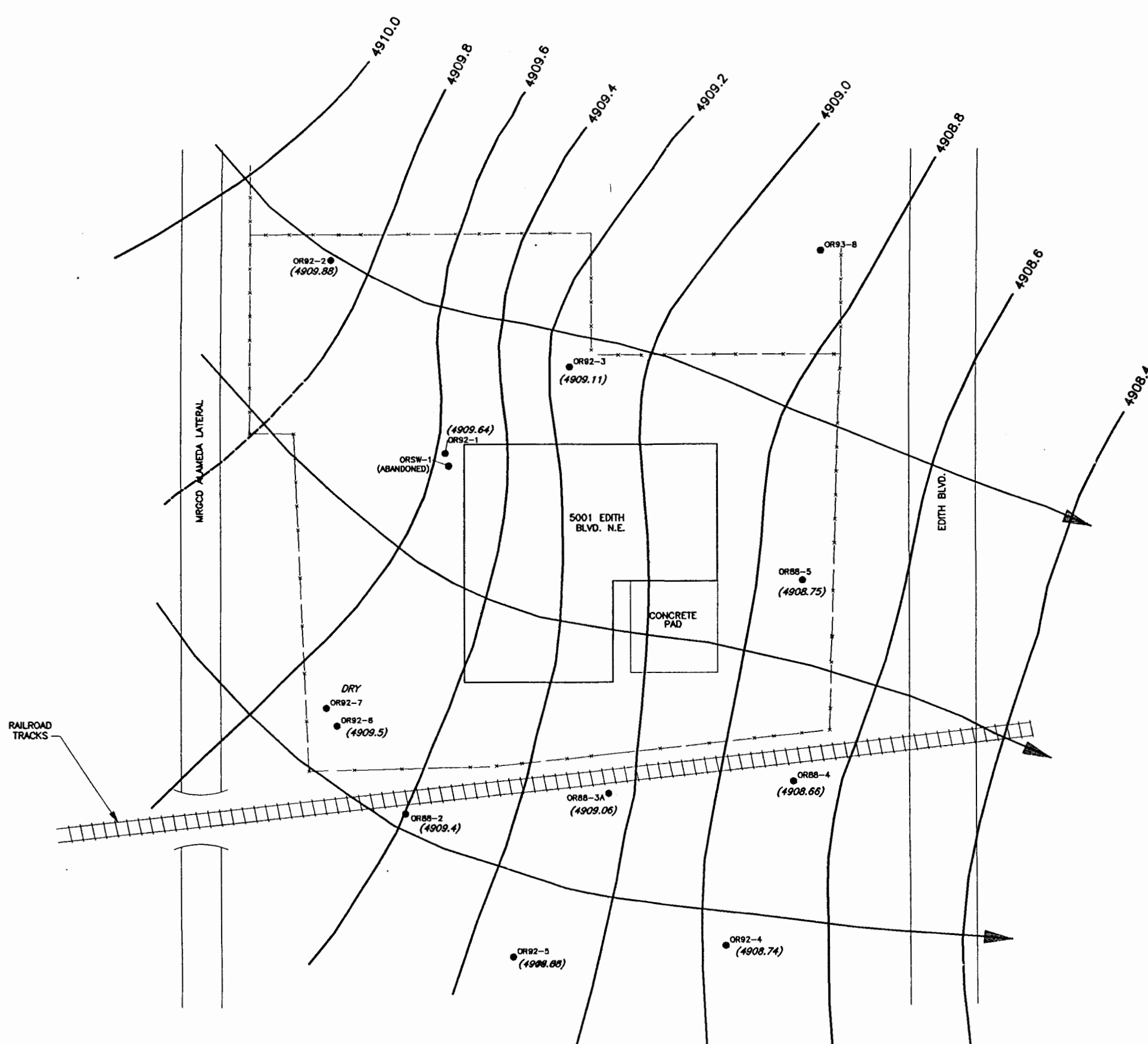
WATER LEVEL CONTOUR MAP
NOVEMBER, 1988
PREPARED FOR
RINCHEM COMPANY, INC.
ALBUQUERQUE, NEW MEXICO

△	ISSUED FOR PRESENTATION	S.B.E.		
No.	DATE	ISSUE / REVISION	DWN. BY	CK'D BY
			AP'D BY	

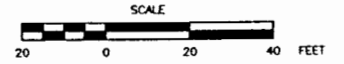
REFERENCE:
ADAPTED FROM: POTENTIOMETRIC SURFACE MAP-1988.
BY BILLINGS & ASSOCIATES, INC. DATED: JUNE, 1993.

DATE: 4-11-94	FIGURE 1	DRAWING NUMBER 94-164-E14
SCALE: AS SHOWN		

DRAWING NUMBER 94-164-E15



- LEGEND:**
- OR88-4 MONITORING WELL LOCATION AND DESIGNATION
 - (4908.75) WATER LEVEL ELEVATION, FEET ABOVE MEAN SEA LEVEL
 - 4909.0 WATER LEVEL ELEVATION CONTOUR LINE
 - ➔ DIRECTION OF GROUND WATER FLOW



WATER LEVEL CONTOUR MAP
 MARCH, 1995
 PREPARED FOR
RINCHEM COMPANY, INC.
ALBUQUERQUE, NEW MEXICO

△	ISSUED FOR PRESENTATION	S.B.E.			
No.	DATE	ISSUE / REVISION	DWN. BY	CK'D BY	AP'D BY

DATE: 4-11-94	FIGURE 1	DRAWING NUMBER 94-164-E15
SCALE: AS SHOWN		