

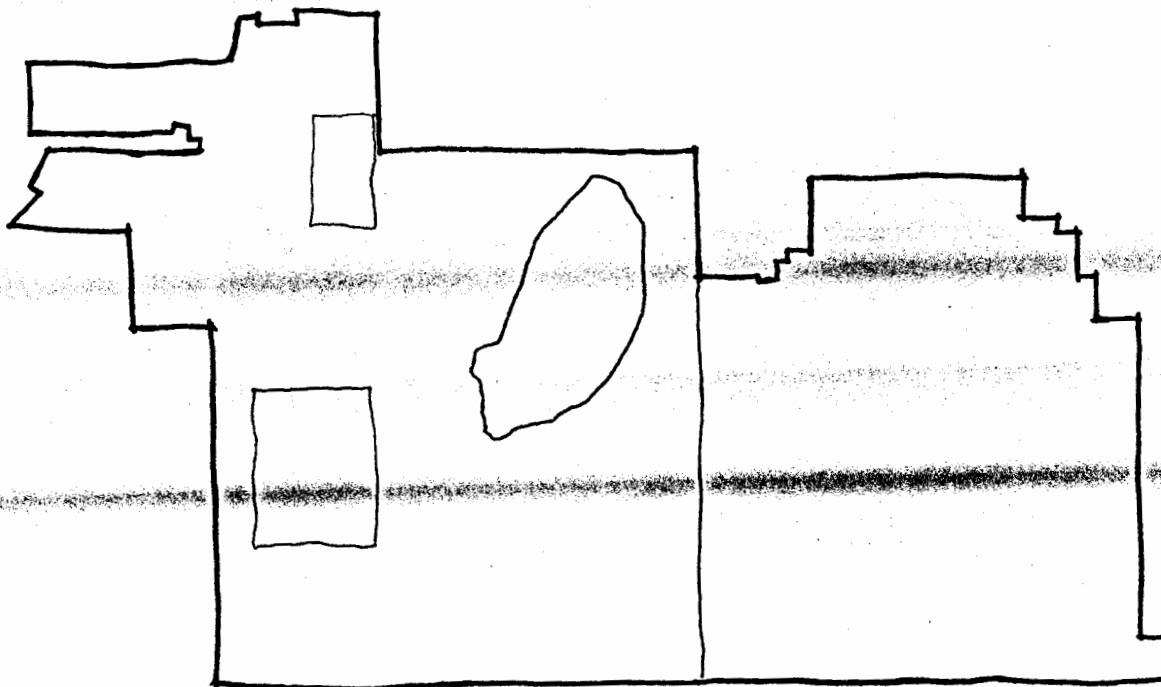
KIRTLAND FEDERAL COMPLEX
LOGISTICS AND SUPPORT WORKING TEAM

Planning Meeting #12

for

FUTURE USE OPTIONS

November 21, 1994



STEP 1: LOCATE AREAS

KAFB1539





PLANNING MEETING #12
for

FUTURE USE PLANNING

AGENDA

November 21, 1994

Keystone Environmental & Planning, Inc.

I PREVIOUS BUSINESS

- Discuss any comments or questions from Meeting 11 Notes

II UPDATE ON SSAB/CAB PROCESS

- Report on Meeting of November 2, 1994

III. UPDATE ON QUARTERLY PUBLIC MEETING

- Report on Meeting of November 16, 1994

IV REVIEW OF MAP OVERLAYS AND STEP 1: LOCATE AREAS

- Discuss/comment on area/sector breakdown; revise as necessary
- Review ER prioritizations, as available (Item 2)
- Discuss Descriptive Parameters (Item 3)

IV OTHER

- Discuss current issues and/or developments
- Plan for next Support Group meeting(s)

Kirtland Federal Complex Future Use Options
LOGISTICS & SUPPORT WORKING GROUP



DISTRIBUTION LIST

Name	Organization & MS	Phone	Fax
John Andrews	DOE/KAO	845-5888	845-4710
Andres Aragon Viamonte	Keystone Env.& Pl.	881-7180	881-7602
Anna Bachicha	DOE/AL/OIEA	845-5653	842-6206
Lt. Col. Jack Bishop	377SPTG/CD	846-7709	
Herbert Bohannon, Jr.	Keystone Env.& Pl.	881-5357	881-7602
Warren Cox	7581 (ER Project)	848-0411	
John Gould	DOE/KAO		
Deborah Garcia	DOE/KAO	845-5460	845-4710
Gale Harms	NMED	827-0029/	827-0045
	PO Box 26110	988-1357	
	Santa Fe, NM 87502		
Nettie Jones	SNL 7312, <u>MS 0876</u>	844-5367	
Ron Kern	NMED		
	525 Camino de Los Marquez		
	Suite 4		
	Santa Fe, NM 87502		
John Lopez	Lovelace/TRI	845-1173	845-1229
Valerie Miranda	CTA	845-5170	845-4530
Nancy Morlock	U.S. EPA	(214)665-6650	
	1445 Ross Avenue		
	Dallas, Texas 75202-2733		
Lt. Col. Ken Nicholson	377 ABW/XP	846-8346	846-6500
Kari Paseur	377 ABW/PA	846-5991	846-4897
Lynn Pincumbe	DOE/TSD	845-5038	
Camille Reyes	SNL 7256, <u>MS 1355</u>	883-3391	881-9853
Cliff Richardson	377SPTG/CECA	846-8211	846-7931
Beth Sellers	DOE/AL/ERPO	845-4752	
Jim Sparkhawk	DOE		
	P.O. Box 2003		
	Oakridge, Tenn. 37831-7606		
Al Stotts	SNL Media Relations	844-2282	844-6367
	<u>MS 0167</u>		
Karen Talbot Rohde	Keystone Env.& Pl.	881-7180	881-7602
Charlie Thomas	SNL 7255, Planning	845-3506	



Floyd A. Thompson III	11766 Hwy 337 Sandia Ranger Station Tijeras, NM 87059	281-3304	281-1176
Ed Tooley	SNL/7255 <u>MS 1036</u>	844-5246	
Chris Tuttle	377 ABW/ EM N	846-0042	846-0403
Maj. Denise Underwood	377 ABW/JA	846-4217	
Tom Vandenberg	SNL/NM Legal	845-9857	
Hunter Weiler	DOE HQ, Wash.DC		
Ted Wolff	SNL 7258 MS-1037	844-6148	

INTEGRATED RESOURCE MANAGEMENT

ACTION STEPS

STEP 1: LOCATE AREA

ROLES AND RESPONSIBILITIES

SUPPORT WORKING GROUP

1. Identify and map management areas:
 - a. DOE Campus (AL)
 - b. SNL, Tech Areas I, II, III, IV, V
 - c. CTA (permitted)
 - d. EG&G (permitted)
 - e. Ross Aviation (permitted)
 - f. Eubank tract (86 acres)
 - g. TSD (various sites)
 - h. Land and facilities permitted to DOE by USAF
 - i. Land withdrawn from public use for DOE (4,595 acres)
 - j. DOE ER sites in the Tijeras Arroyo
 - k. ITRI (permitted)
 - l. Any other land or facilities used or controlled by DOE, not included
 - m. DOE ER sites
2. Prioritize management areas for study
 - a. Areas of high public interest - East Mountain, Four Hills, Isleta, Tijeras Arroyo, South Valley, Mesa del Sol
 - b. Areas of recreation potential - withdrawn lands, Tijeras Arroyo
 - c. Areas of resource conflict (potential use conflicts with any stakeholder group) - Tijeras Arroyo, Central Training Academy training sites, Eubank tract, Lurance Canyon Burn Site, Madera Canyon Cable Test Facility, Pueblo of Isleta, Manzano Mountain (DOE permitted area),

SITE SPECIFIC ADVISORY BOARD

1. Agree on a prioritized list of management areas

SUPPORT WORKING GROUP

SITE SPECIFIC ADVISORY BOARD

- sled track
 - d. Areas where health and safety are of concern - UXO, buffer zones, clear/safety zones, ER sites
 - e. Areas of production potential - test ranges, SNL tech areas, CTA and TSD training sites, main campuses of DOE/AL, ITRI, Ross Aviation, and EG&G
 - f. Areas with rare or sensitive components - historical, archaeological sites, endangered flora and fauna, burrowing owls and other protected species
3. List of Descriptive Parameters:
- a. Geologic description of land, physical descriptions of each area
 - b. Biological - habitats
 - c. Climate
 - d. Social influence (human inroads)
 - e. Production potential (future emissions)
 - f. Human dimensions - remoteness, wilderness adventure, artistic
4. List of Controlling Factors
- a. Mission
 - b. Fiscal resources
 - c. Institutional constraints
 - d. Legal constraints
 - e. Feasibility of proposed actions
5. List of Human Demands and Needs
6. Development of a Public Participation Plan
7. Establishment of Schedules
8. Start Process Records and Index

2. Agree on Descriptive Parameters

3. Agree on Controlling Factors

4. Agree on a Public Participation Plan

STEP 1 : PRODUCTS

1. List of Management Areas, prioritized for study
 2. Maps of areas for analysis
 3. List of descriptive parameters to be used
 4. List of controlling factors
 5. List of human demands and needs
 6. Public Participation Plan
 7. Process records and index, including resource materials and meeting notes
-

STEP 1: SCHEDULE

Completion for presentation to the SSAB by January 15, 1995

STEP 2: DESCRIBE EXISTING CONDITIONS

ROLES AND RESPONSIBILITIES

SUPPORT WORKING GROUP

1. Gather, compile, and describe existing and pre-DOE condition information for descriptive parameters from Step 1.
2. Map data for each area studied.
3. Establish database and begin update.

SITE SPECIFIC ADVISORY BOARD

1. Accept existing and pre-DOE condition descriptions.

STEP 2: PRODUCTS

1. Descriptions and maps of existing conditions for all areas and for all descriptive parameters
 2. Updated Database
 3. Updated Process Record and Index
-

STEP 2: SCHEDULE

Completion by March 1, 1995, for presentation to the SSAB

STEP 3: DESCRIBE DESIRED CONDITIONS

ROLES AND RESPONSIBILITIES

SUPPORT WORKING GROUP

1. Describe and map Desired Conditions for all descriptive parameters from Step 1.
2. Get public input to Item 1, above.
3. Document rationale for desired conditions, taking into account the "Controlling Factors" identified in Step 1.
4. Continue to update the database.

SITE SPECIFIC ADVISORY BOARD

1. Achieve an informed consensus regarding Desired Conditions

STEP 3: PRODUCTS

1. Approved descriptions and maps of desired conditions for all descriptive parameters of areas identified in Step 1.
 2. Updated Process Record and Index
 3. Updated Database
-

STEP 3: SCHEDULE

Completion June 1, 1995, for presentation and review by the SSAB

STEP 4: LIST POSSIBLE MANAGEMENT PRACTICES

ROLES AND RESPONSIBILITIES

SUPPORT WORKING GROUP

1. Prioritize list of possible management practices.
2. Assess economic, social and technical feasibility of each possible practice, taking into account the controlling factors identified in Step 1.
3. Develop overview monitoring program for desired conditions.
4. Group similar practices together.

SITE SPECIFIC ADVISORY BOARD

1. Agree to a list of possible management practices (re-utilization activities).
2. Accept overview and monitoring of Future Land Use Plan.

STEP 4: PRODUCTS

1. Accepted and prioritized list of possible management practices.
 2. Economic, social, and technical feasibility analysis completed, to include consideration of controlling factors.
 3. Overview monitoring plan for desired outcomes.
 4. Updated Process Record and Index
 5. Updated Database
-

STEP 4: SCHEDULE

Completion August 1, 1995 for public comment, SSAB review. Final submittal October 1.