

TA 5



**Department of Energy**  
National Nuclear Security Administration  
Los Alamos Site Office  
Los Alamos, New Mexico 87544

**MAR 02 2004**



**CERTIFIED MAIL/RETURN RECEIPT**

Mr. John Young  
NMED – Hazardous Waste Bureau  
2905 Rodeo Park Drive East,  
Building 1  
Santa Fe, NM 87505-6303

Dear Mr. Young:

Subject: Fact Sheet for R-28

Enclosed is the fact sheet for R-28, which was recently completed by the Department of Energy. If you have any questions regarding this matter, I can be reached at 665-5046.

Sincerely,

A handwritten signature, appearing to read "Mat Johansen", is written over a horizontal line.

Mat Johansen  
Project Manager  
Program Compliance Manager

OPM:5TW-004

Enclosure: R-28 Fact Sheet

cc w/enclosure:

John Kieling

NMED – Hazardous Waste Bureau  
2905 Rodeo Park Drive East,  
Building 1  
Santa Fe, NM 87505-6303

B. Enz, OPM, LASO

M. Johansen, OPM, LASO

T. Whitacre, OPM, LASO

T. Taylor, OOM, LASO

S. Yanicak, NMED-DOE OB, MS-J993

K. Hargis, RRES-DO, LANL, MS-J591

J. McCann, RRES-WQH, LANL, MS-M992

C. Nylander, RRES, LANL, MS-J591

N. Quintana, RRES-R, LANL, MS-M992

S. Rae, LANL, RRES-WQH, LANL, MS-K497

B. Ramsey, LANL, RRES-DO, LANL, MS-J591

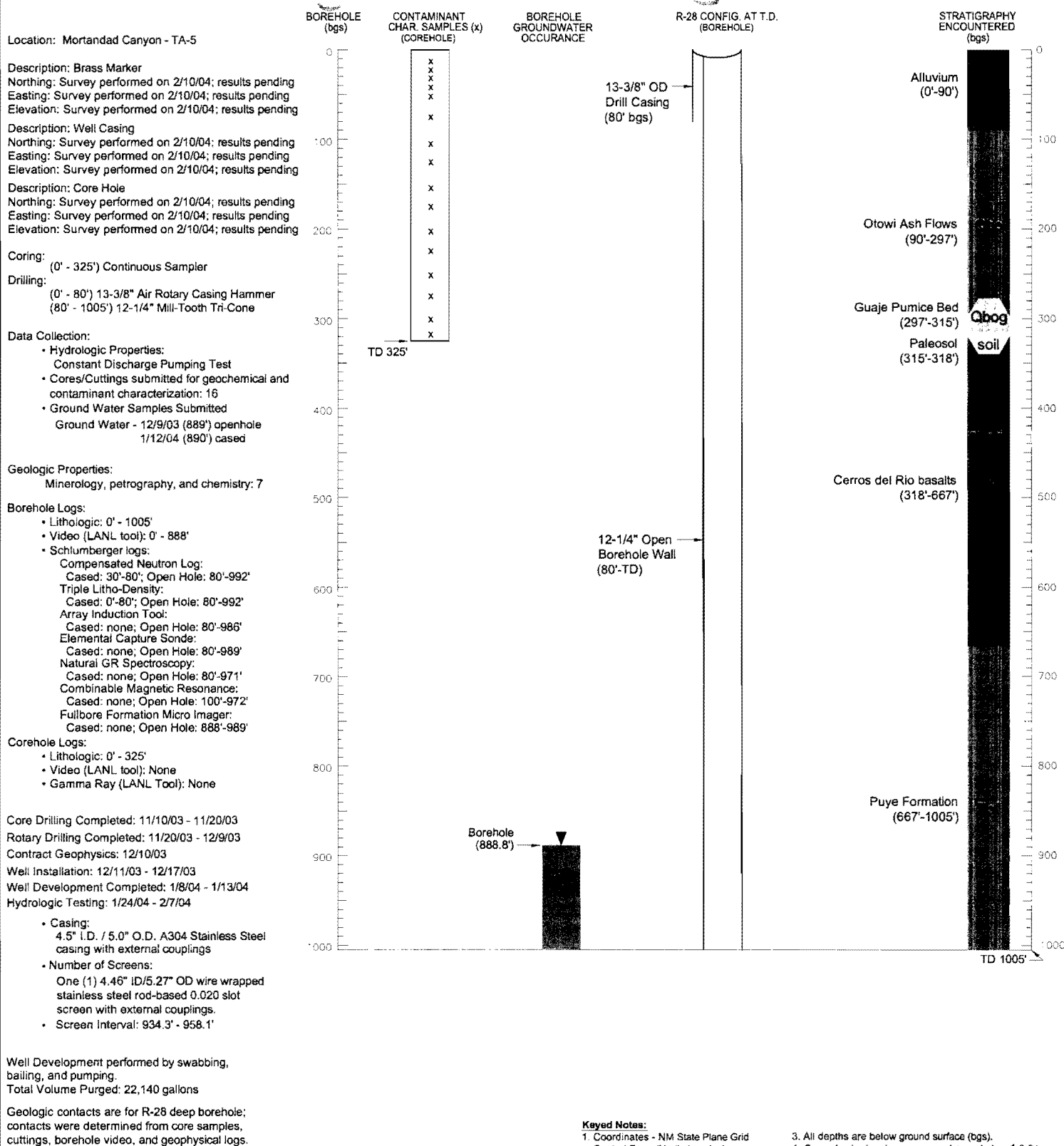
M. Reed, RRES-DO, LANL, MS-J556

B. Robinson, EES-6, LANL, MS-T003

D. Stavert, RRES-D, LANL, MS-J591



2841



DCN: ALB04DR001 Rev.1



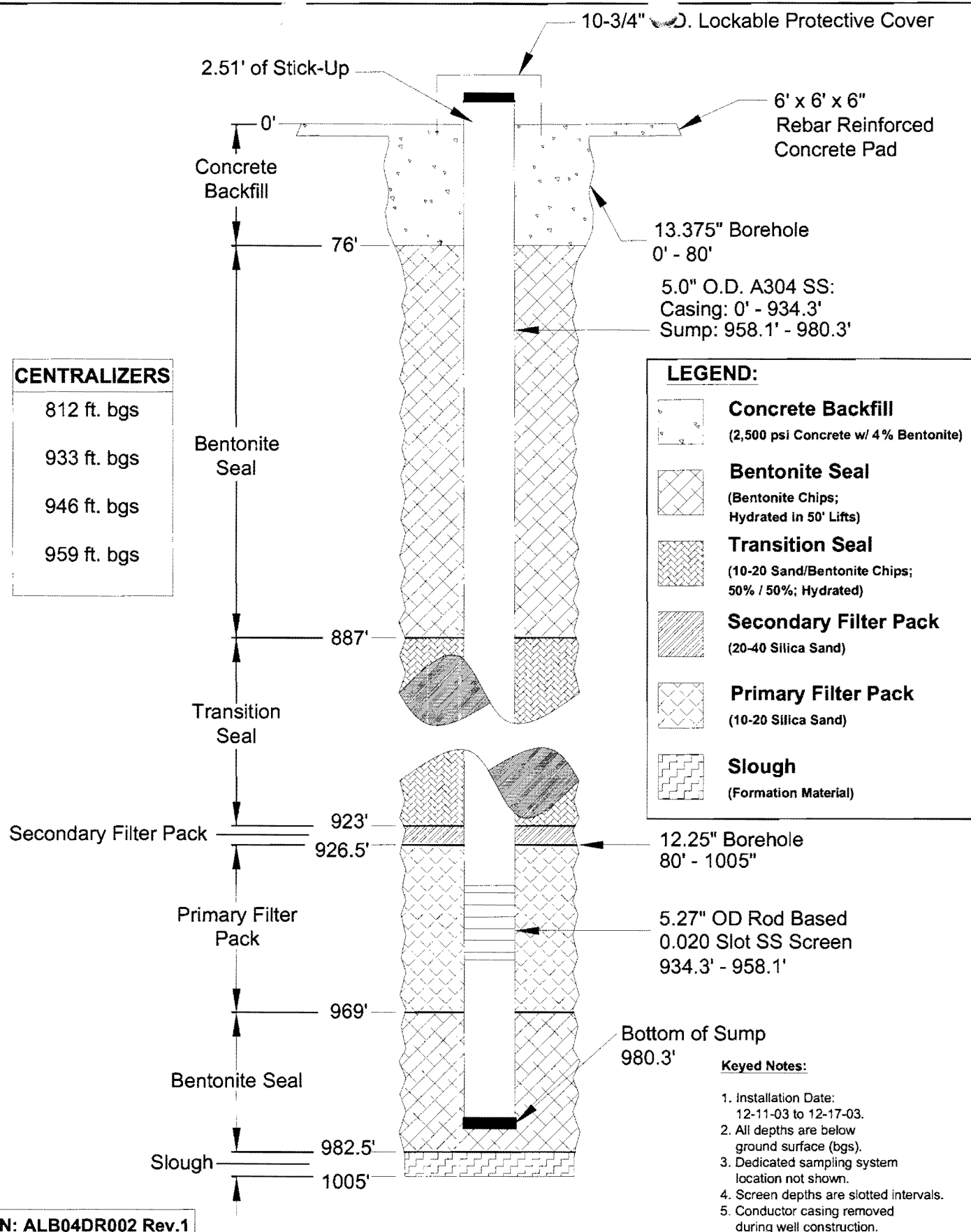
KLEINFELDER

Drawn By: C. Landon	Date: March 2004
Project No.: 37151	Filename: ALB04DR001
Scale: Not-To-Scale	Revision: 1
Reviewed By: B. Bockisch	Approved By: M. Everett

**Construction, Stratigraphic, and Hydrogeologic Information for Characterization Well R-28**  
 Los Alamos National Laboratory  
 Los Alamos, New Mexico

FIGURE

1



DCN: ALB04DR002 Rev.1

**KLEINFELDER**

Drawn By: C. Landon	Date: March 2004
Project No.: 37151	Filename: ALB04DR002
Scale: Not-To-Scale	Revision: 1
Reviewed By: B. Bockisch	Approved By: M. Everett

**Schematic Diagram of  
Characterization Well R-28**  
Los Alamos National Laboratory  
Los Alamos, New Mexico

FIGURE

**2**