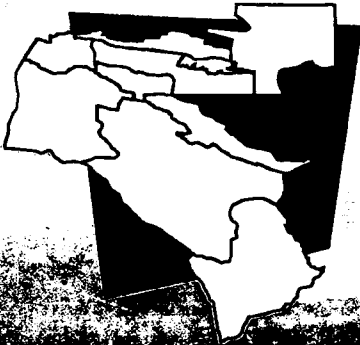
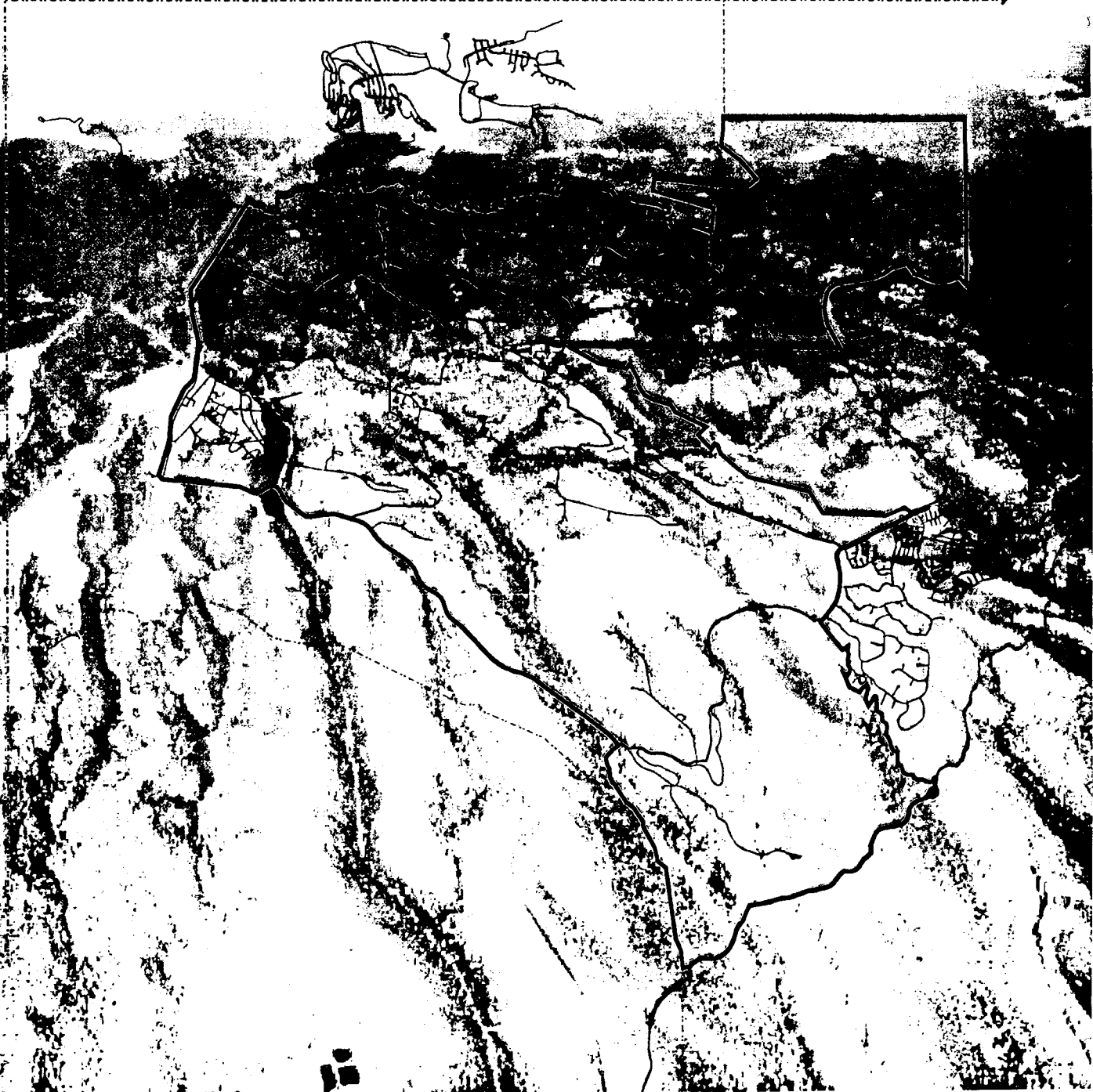


76100

Comprehensive Site Plan 2000



3 9338 00612 9323



3631

Los Alamos

Los Alamos National Laboratory

LA-13369-02-00



Library Catalog



New Search	Comments	Options	Limit Search	Circulation
List Marks	Help	Databases	(book, journal, Web...)	Record

Results of selecting a browse link.

Search: tr=(>>> LA-UR-99-6704 Comprehensive site plan 2000)

#76100

[Browse List](#)

Record 1 of 1	Mark	Full Record	Request Item
Call No.:	LA-UR-99-6704		
Title:	Comprehensive site plan 2000 / produced under the Direction of the Senior Executive Team and Site Planning and Construction Committee by the Site Planning and Development Group, PM-1.		
Author:	Los Alamos National Laboratory. Project Management and Planning.		
Published:	Los Alamos, N.M. : Los Alamos National Laboratory, 2000.		
Description:	1 v. (various pagings) : ill. (some col.), maps (some col.) ; 22 x 29 cm.		
Tech. Rept. No.:	LA-UR-99-6704		
Location	Call Number	Status	
WWW Govt	http://lib-www.lanl.gov/cgi-bin/getfile?00612932.pdf	17.OMB Access restricted to selected government agencies	
REPT	LA-UR-99-6704 c.1	In Library	
REPTSC	Q180.6.U62 L6fa 2000 c.1	Out of collection	

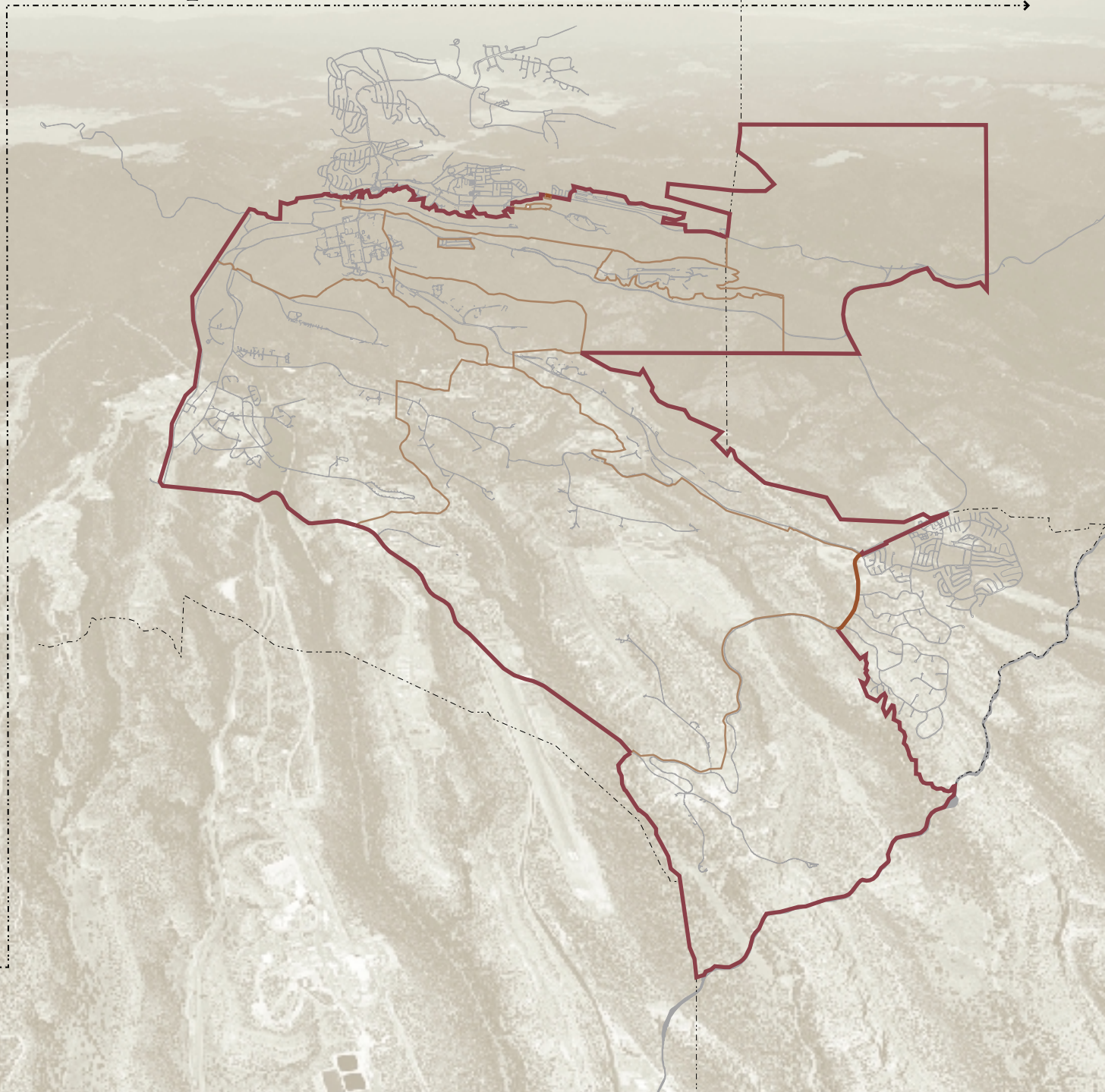


Library Catalog



New Search	Comments	Options	Limit Search	Circulation
List Marks	Help	Databases	(book, journal, Web...)	Record

Comprehensive Site Plan 2000



Los Alamos
NATIONAL LABORATORY

LA-UR 99-6704

This document was produced by PM-1, the Site Planning and Development Group. Publishing date was January 31, 2000

PM-1 Staff

Rick Gonzales, A.I.C.P., C.B.O., Group Leader
Dan Pava, A.I.C.P., CSP2000 Team Leader
Don Sandstrom, Senior Management Liaison
Kirt Anderson, A.I.C.P., A.S.L.A., Planner
Steve Bernia, R.A., Architect
Cory Higgins, P.E., Engineer
Melanee Shurter, R.L.A., A.P.A., Planner
John Stanford, Planner
Rae Anne Tate, A.P.A., Planner
Valerie Herrera, Planning Technician
Joan Stockum, GIS Mapping Technician
Mona Valencia, GIS Mapping Technician
Debra Griego, Group Office Administrator

PM-1 contracted with the following consulting firms to assist in development and publication of this document: Higginbotham Briggs and Associates, Colorado Springs, CO; Design Workshop, Inc., Santa Fe, NM; and Jacobs Engineering, Albuquerque, NM