

Los Alamos

NATIONAL LABORATORY

Environmental Restoration Community Relations
PA-3, MS P355
Los Alamos, New Mexico 87545
(505) 665-2127
FAX (505) 665-5595

Date: April 22, 1993

Refer to: ER-PA-3-93-18

Carl CS
file

Ms. Barbara Hoditschek
Program Manager
RCRA Permit Section
Hazardous and Radioactive Materials Bureau
NMED
1190 St. Francis Dr.
Santa Fe, NM 87502

Thank you for sending the LANL TA-35 TSL-85 Surface Impoundment Closure Plan Fact Sheet to the Los Alamos National Laboratory Environmental Restoration Community Reading Room. I received it after some apparent delay in our shipping office. As requested, we will return this copy to you after the end of the public comment period on April 30.

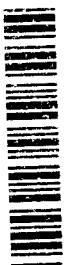
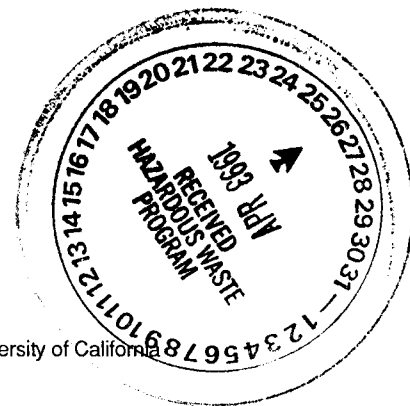
For your records, Martin Janowski no longer works with our program. He has been replaced by Patricia Trujillo Oviedo who now directs the community relations program for the Environmental Restoration Program. Otherwise your address for us is correct.

Thanks again for sending the document. We will be moving the reading room to 1450 Central Ave. Suite 101 in late April or early May. We always welcome visits from you and your staff.



Tom Ribe
Environmental Restoration Community Reading Room

cy: CRPL file P355
Patricia T. Oviedo P355
Marja Shaner M992
Steve Slaten A316



5107