

Hydrogeologic  
Workplan  
R-14  
TA: 35

**Subject:** R-14

**Date:** Mon, 08 Jul 2002 11:14:04 -0600

**From:** john young <john\_young@nmenv.state.nm.us>

**Organization:** New Mexico Environment Department-Hazardous Waste Bureau

**To:** charlie nylander <nylander@lanl.gov>, mat johansen <mjohansen@doeal.gov>

**CC:** john\_young@nmenv.state.nm.us, david cobrain <david\_cobrain@nmenv.state.nm.us>, carolyn\_cooper@nmenv.state.nm.us, Michael Dale <mdale@lanl.gov>, dave broxton <broxton@lanl.gov>

Charlie and Mat,

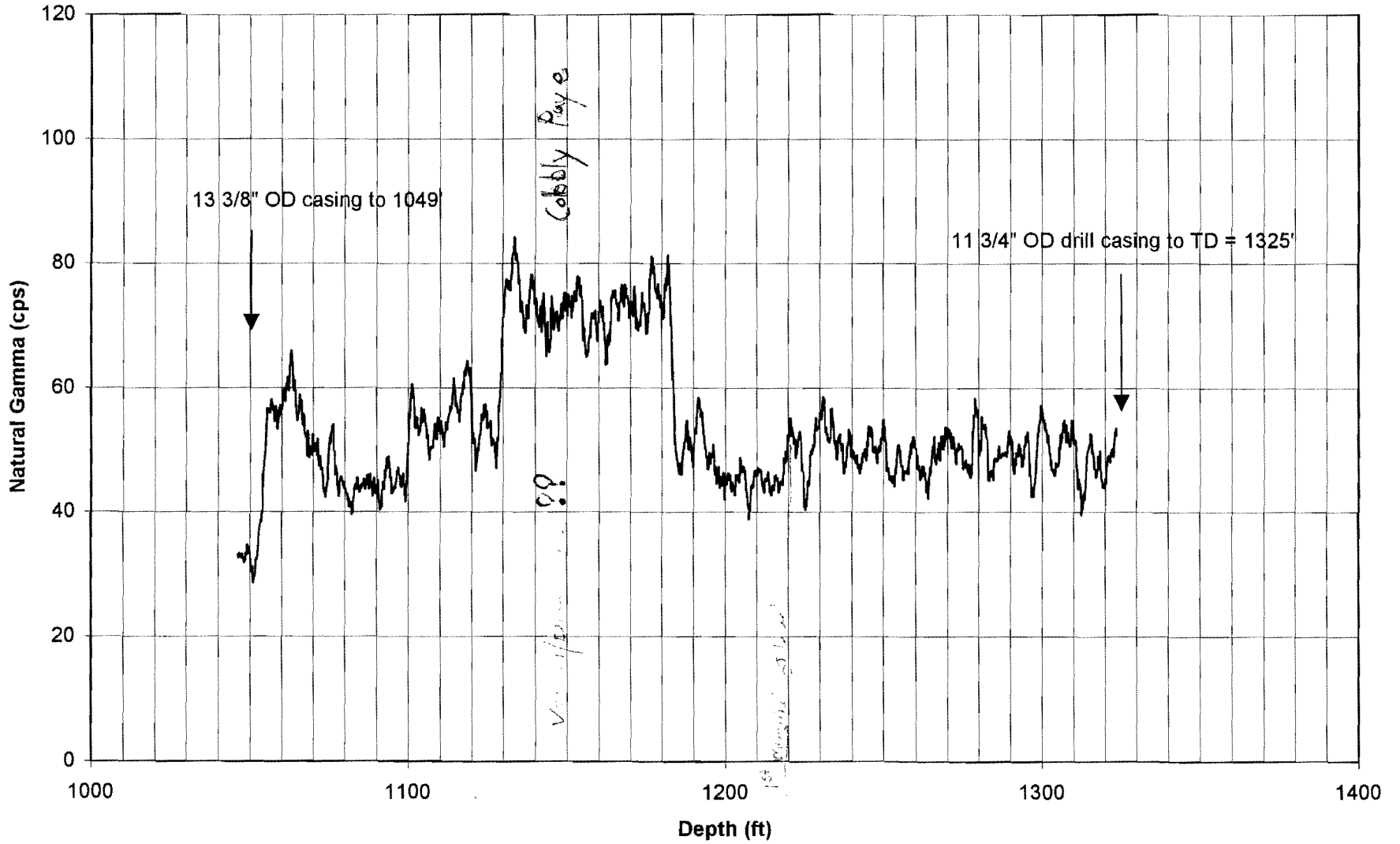
A quick email to follow up our conversations last week regarding the construction of R-14.

- 1) Although NMED agreed to the 2 port Westbay system with the first screen located 10 feet below the top of saturation; our preference for R-14 was a single completion, screened across the top of the regional aquifer.
- 2) LANL should pressure seal the annular space in areas of saturation rather than floating the bentonite pellets in these areas to minimize the chance of bridging.



5291

R-14 Gamma 7/3/02



# R-14 Planned Design Rev. A (7/3/02)

Depths are BELOW GROUND SURFACE

