

Table 61.--Site 1, TA-50 air injection test holes

Location

USGS Hole designation	USGS Location number	AEC-LASL Designation (structure number)	AEC-LASL Coordinates	Drilling date	Altitude of land surface (feet above mean sea- level)
E-1	19.6.22.321a	TA-50-29	N. 34 + 08 E. 99 + 89	Nov 1964	7240.4
N-1	19.6.22.321b	TA-50-25	N. 34 + 16 E. 99 + 62	Nov 1964	7241.8
W-1	19.6.22.321c	TA-50-27	N. 34 + 08 E. 99 + 48	Nov 1964	7241.7
W-2	19.6.22.321d	TA-50-26	N. 34 + 05 E. 99 + 22	Nov 1964	7241.7
I	19.6.22.321e	TA-50-28	N. 34 + 07 E. 99 + 64	Nov 1964	7241.6
S-1	19.6.22.321f	TA-50-30	N. 33 + 86 E. 99 + 65	Nov 1964	7239.7
S-2	19.6.22.321g	TA-50-31	N. 32 + 89 E. 99 + 81	Nov 1964	7231.6
S-3	19.6.22.321h	TA-50-32	N. 31 + 63 E. 99 + 77	Nov 1964	7218.3

108

8285

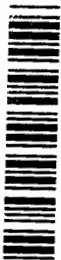


Table 61.--Site 1, TA-50, air injection test holes - Continued

USGS Hole Designation	Diameter (in inches)	Depth (in feet)	<u>Construction</u>				Type of drilling	Remarks
			Depth Injection Zone No. 1	Depth Injection Zone No. 2	Depth Injection Zone No. 3	Depth Injection Zone No. 4		
E-1	3	86	3- 8	37- 43	69-74	81-86	Rotary-air	Monitoring tub
N-1	5	94	3- 6	25- 30	54-60	86-94	Auger	Injection and monitoring tubes
W-1	3	91	3- 8	39- 44	69-74	86-91	Rotary-air	Monitoring tubes
W-2	3	114	3- 8	109-114	-	-	do.	Do.
I	5	60	3- 8	25- 30	55-60	-	Auger	Injection and monitoring tubes
S-1	5	90	3- 8	24- 29	50-55	83-90	do.	Do.
S-2	5	56	49-56	-	-	-	do.	Water injection test
S-3	5	43	-	-	-	-	do.	Open hole

Note: Injection zone consists of 3/8" diameter gravel. Monitoring tube is 1/2 inch plastic tubing perforated about 1 foot from bottom. Injection tube is 3/4" plastic tubing perforated about 3 feet from bottom. Perforations in each tube are separated from those in the other tube by lead plate. Tubes are cemented into the gravel-pack intervals.