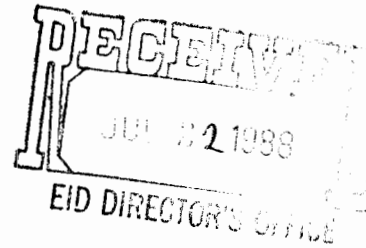




Department of Energy  
Albuquerque Operations  
Los Alamos Area Office  
Los Alamos, New Mexico 87544



JUL 19 1988

CERTIFIED MAIL - RETURN RECEIPT REQUESTED

Mr. Michael Burkhart, Director  
Environmental Improvement Division  
P. O. Box 968  
Santa Fe, NM 87504-0968

Dear Mr. Burkhart:

Enclosed are the revised Part A. and the July 1, 1988 letter sent to you regarding increasing the storage capacity for hazardous waste at Los Alamos National Laboratory. The following changes occur in this Part A.

1. Page 1 of 5 on Form 3510-3, Line Number 1 - Storage process design capacity increased by 37,830 gallons to 275,820 gallons.
2. Revised figure "Locations of TA-50 Chemical Waste Incinerator and Container Storage Facilities" - Additional storage pad added.
3. Revised figure "TA-54 Area L Waste Management Facilities" - Designation of bermed area as liquid waste storage area.

If you should have any questions regarding this matter, please contact Donna M. Lacombe of my staff at 667-5288.

Sincerely,

Harold E. Valencia  
Area Manager

Enclosures

cc w/enclosures:

C. K. Crossman, EID, Santa Fe, NM  
A. Davis, U. S. EPA Region VI, Dallas, TX

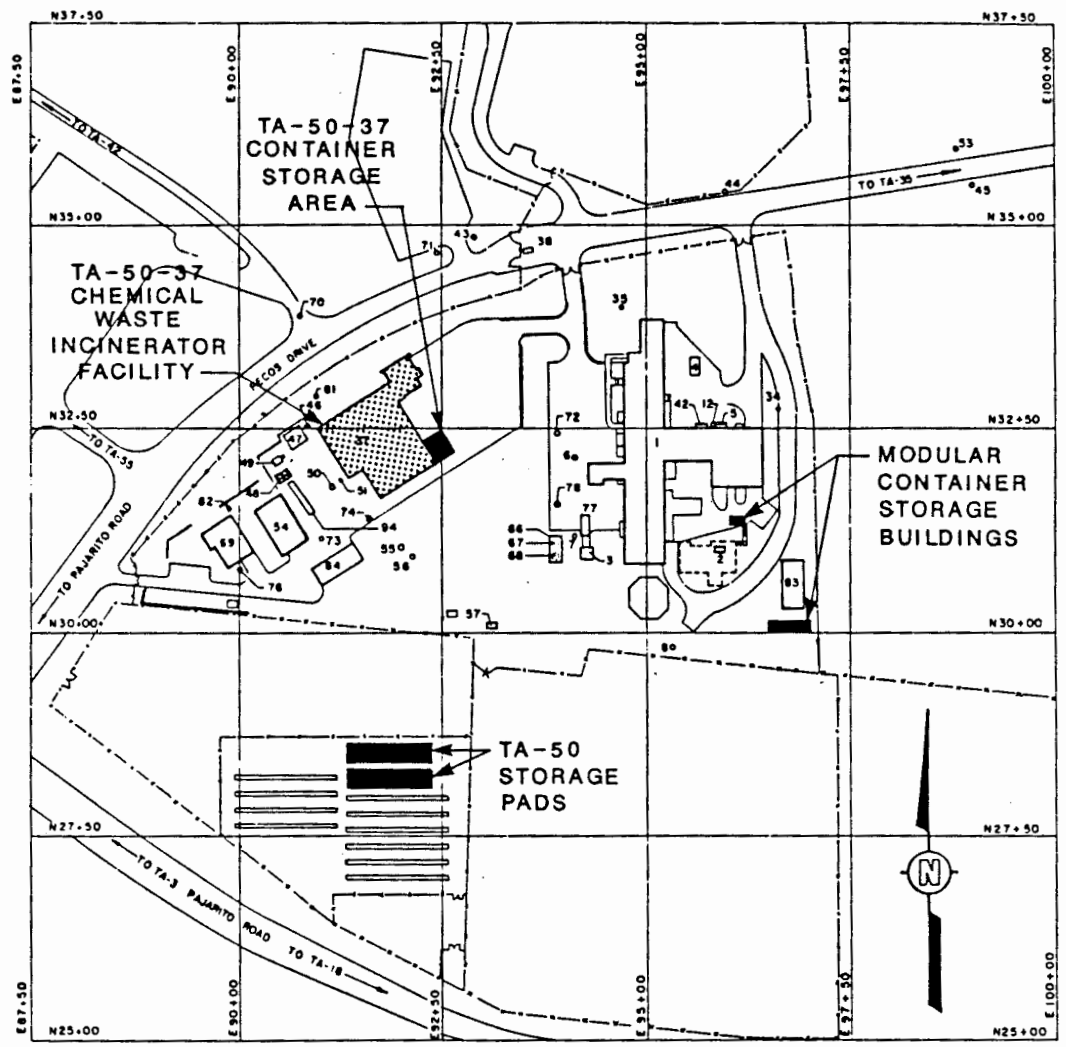
TK



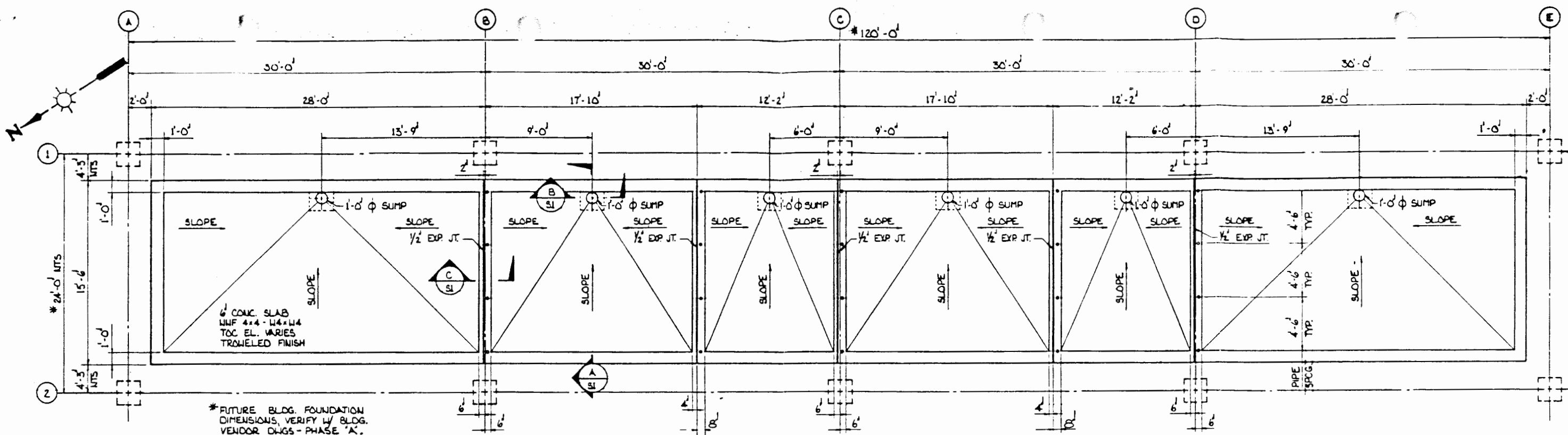
8358

11/16/87 A301017.02 - A138 DEI 11/16/87  
SWS 11/16/87

Revised 7/8/88  
GIMH PROJECT  
DES BUREAU



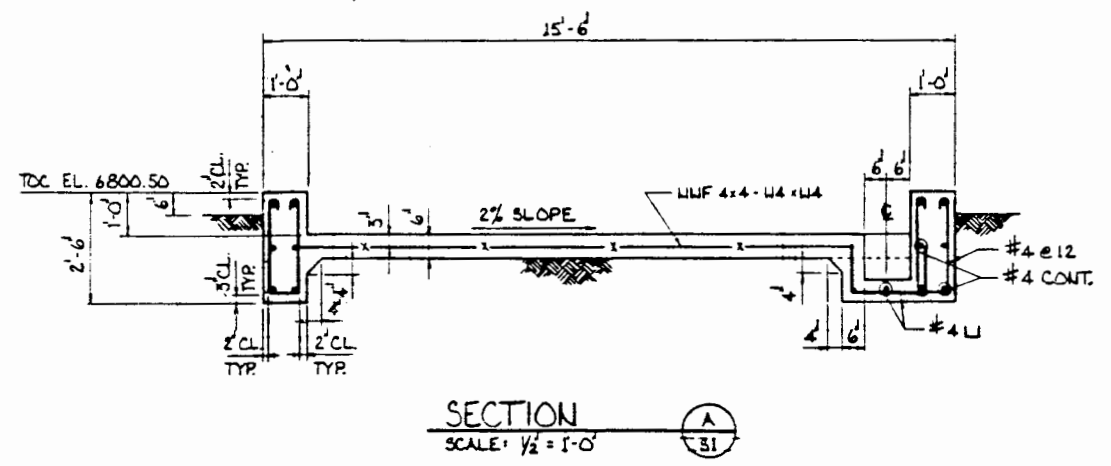
LOCATIONS OF TA-50  
CHEMICAL WASTE INCINERATOR AND  
CONTAINER STORAGE FACILITIES



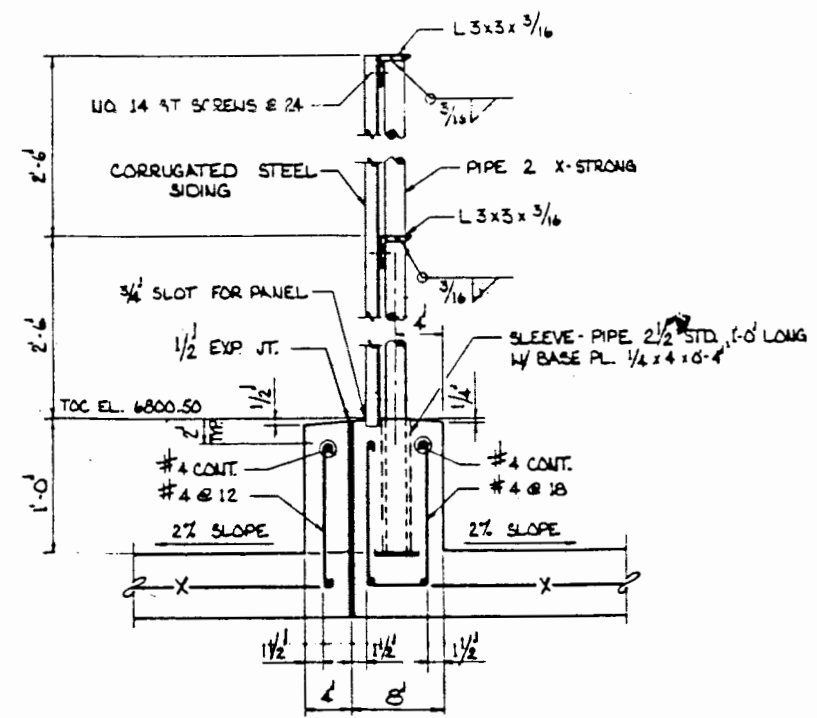
**FOUNDATION PLAN**  
SCALE: 1/4" = 1'-0"

**STRUCTURAL NOTES**

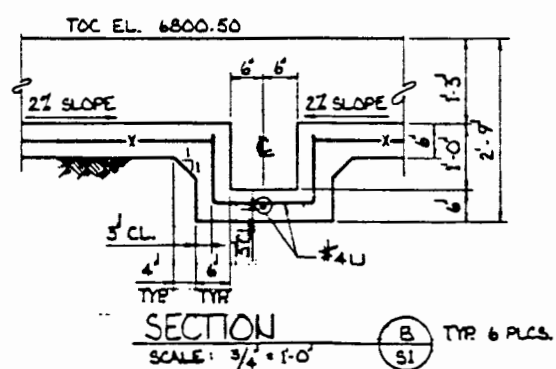
1. STRUCTURE EXCAVATION - EXCAVATE FOR WALLS & SLABS IN ACCORDANCE WITH ELEVATIONS & DIMENSIONS SHOWN ON THIS DRAWING. EXCAVATION SHALL EXTEND A SUFFICIENT DISTANCE FROM WALLS TO ALLOW FOR PLACING & REMOVAL OF FORMS. OVEREXCAVATION BELOW ELEVATIONS SHOWN SHALL BE RESTORED TO PROPER ELEVATION BY BACKFILLING WITH CONCRETE. THE EXCAVATION SHALL BE INSPECTED BY ENG-1 INSPECTOR PRIOR TO PLACING REINFORCING STEEL.
2. CONCRETE CONSTRUCTION SHALL BE IN CONFORMANCE WITH FACILITIES ENGINEERING DIVISION STANDARD SPECIFICATIONS:  
SECTION 03100 - CONCRETE FORMWORK, 3/4" CHAMFER  
SECTION 03200 - REINFORCING STEEL, GRADE 60  
SECTION 03300 - CAST-IN-PLACE CONCRETE,  $f_c = 4000$  PSI  
  
FINISH WALLS & SLABS WITH A PREMIXED, SINGLE APPLICATION SEALER & HARDENER FLOOR FINISH. THE FINISH SHALL BE DELIVERED TO THE JOB SITE IN UNBROKEN CONTAINERS & APPLIED IN ACCORDANCE WITH THE MANUFACTURERS DIRECTIONS.
3. MISCELLANEOUS STEEL - MATERIAL FABRICATION, ERECTION & PAINTING OF STEEL SHALL CONFORM TO SITE ENGINEERING STANDARD SPECIFICATION SECTION 05120 - STRUCTURAL STEEL.  
  
BARRIER PANELS SHALL BE 26 GAUGE, 2 1/2 x 1/2 CORRUGATED GALVANIZED STEEL CONFORMING TO ASTM A446 'G-90. FASTEN WITH UO. 14 SELF-TAPPING SCREWS.



**SECTION A-A**  
SCALE: 1/2" = 1'-0"



**SECTION C-C**  
SCALE: 1/4" = 1'-0"



**SECTION B-B**  
SCALE: 3/4" = 1'-0" TYP 6 PLS.

NO.	DATE	CLASS. REV.	REVISIONS	OWN	DES	CHK	REQ. CWF	REQ. D.O.	ENG. CWF	ENG. D.O.
<b>FACILITIES ENGINEERING DIVISION</b>										
<b>CHEMICAL STORAGE TA-50</b>										
DRAWN: B. SANCHEZ DESIGN: B. SANCHEZ CHECKED: C. SANCHEZ RELEASED: J. Johnson DATE: 8-9-85										
SUBMITTED: <i>[Signature]</i>			RECOMMENDED: <i>[Signature]</i>			APPROVED: <i>[Signature]</i>				
<b>Los Alamos</b>							Los Alamos National Laboratory Los Alamos, New Mexico 87545		SHEET 2 OF 2	
CLASSIFICATION: 7 REQUESTING DIVISION: LAB REQUESTING GROUP: 8204-54 REVIEWER: <i>[Signature]</i> DRAWING NO.: ENG-C-44856 DATE: 7-28-85										