

Department of Energy

Field Office, Albuquerque
Los Alamos Area Office
Los Alamos, New Mexico 87544

DEC 21 1994



Ms. Barbara Hoditschek, Program Manager
RCRA Permits Program
Hazardous and Radioactive Materials Bureau
New Mexico Environment Department
525 Camino de los Marquez
Santa Fe, New Mexico 87502

Dear Ms. Hoditschek:

Subject: Revised Closure Plan, NE & NW Surface Impoundments,
TA-53, OU 1100

Enclosed are figures to accompany the NOD Response for the
subject closure plan, mailed to you on December 16, 1994. The
four revised figures include Figures 3-3, 5-1, K-1, and K-2.

Please attach them to our response.

Sincerely,

Theodore J. Taylor
Program Manager
Environmental Restoration Program

LAAMEP:9TT-035

Enclosure

cc:
See page 2

Tc



4304

DEC 21 1994

Ms. Barbara Hoditschek

2

cc w/enclosure:

E. Merrill, EM-452, HQ
T. Taylor, AAMEP, LAAO
B. Enz, Scientech, LAAO
B. Swanton, AIP, NMED,
LANL, MS-J993
G. Gould, ESA-DE, LANL,
MS-G787
J. Levings, ERPO, AL

cc w/o enclosure:

W. Spurgeon, EM-452, HQ
C. Fesmire, AAMEP, LAAO
K. Schenck, Scientech, LAAO
J. White, ESH-19, LANL,
MS-K498
T. Baca, EM, LANL, MS-J591
J. Jansen, EM/ER, LANL,
MS-M992
RPF, LANL, MS-M707

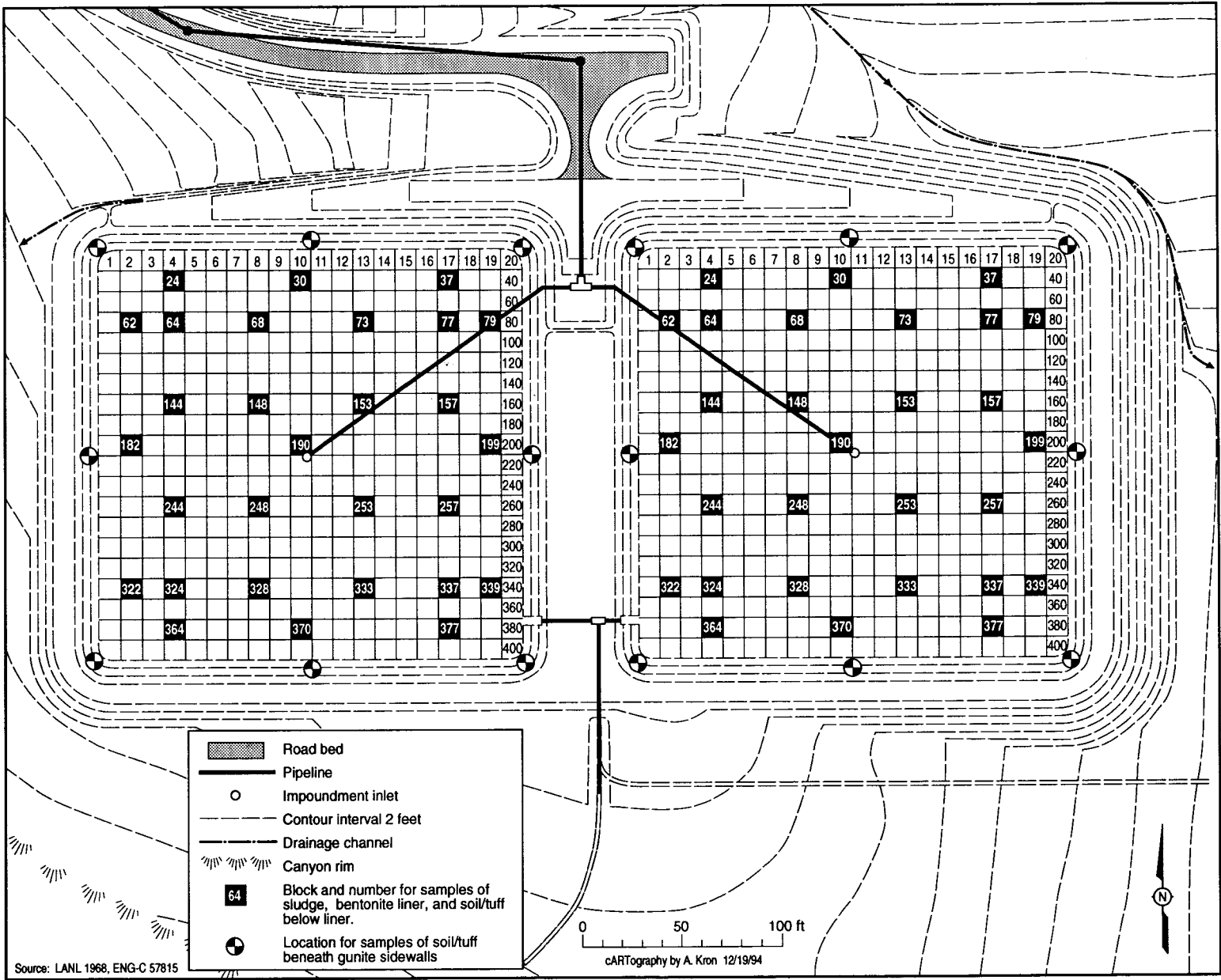


Figure 3-3. Locations of Sludge, Liner, and Soil/Tuff Samples Inside North Impoundments

Comparison with SALs

Baseline Risk Assessment

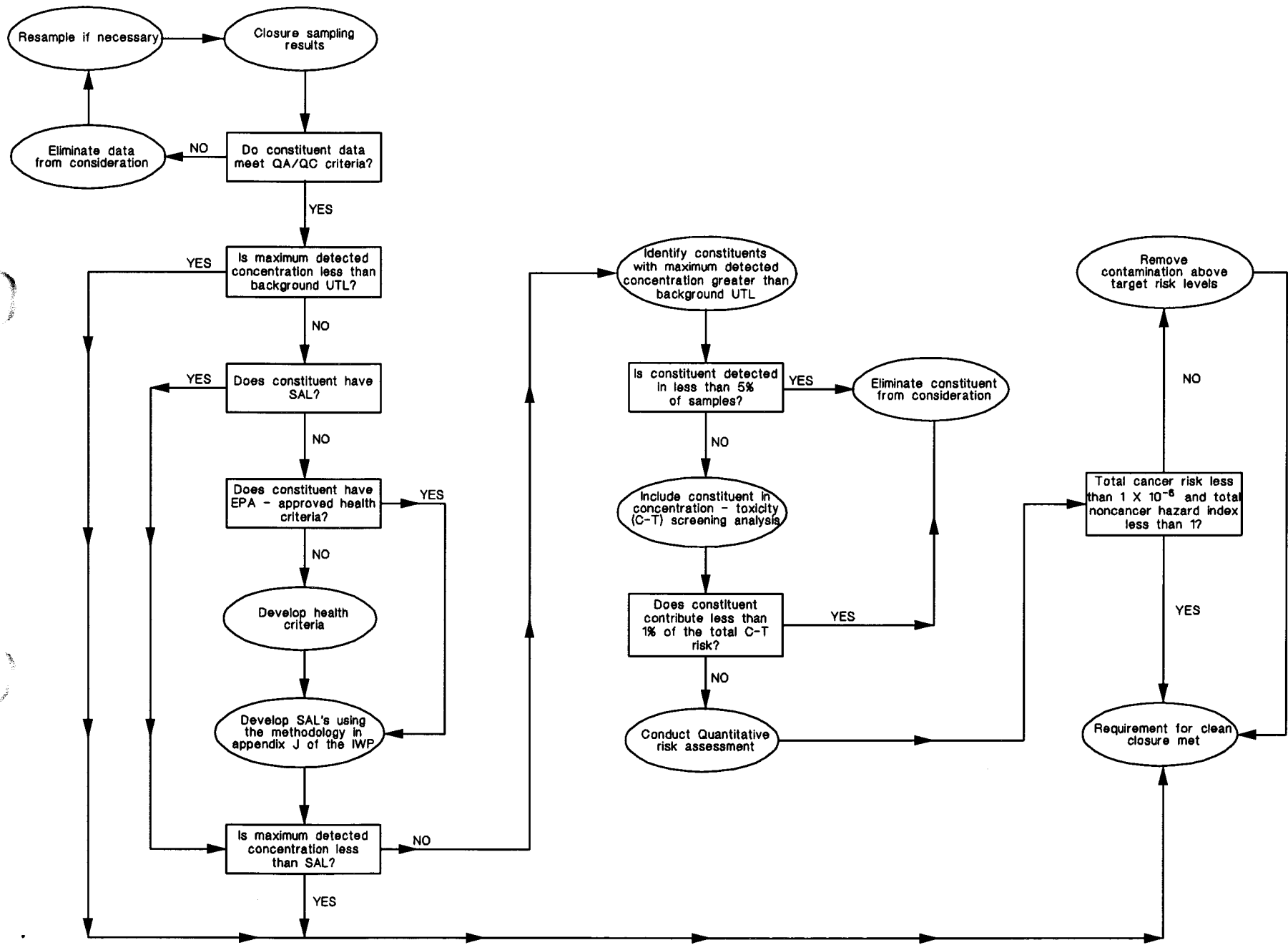


Figure 5-1. Process for Determining if Closure Performance Standard is Met (see discussion in Section 5.1.1.2)

Comparison with SALs

Baseline Risk Assessment

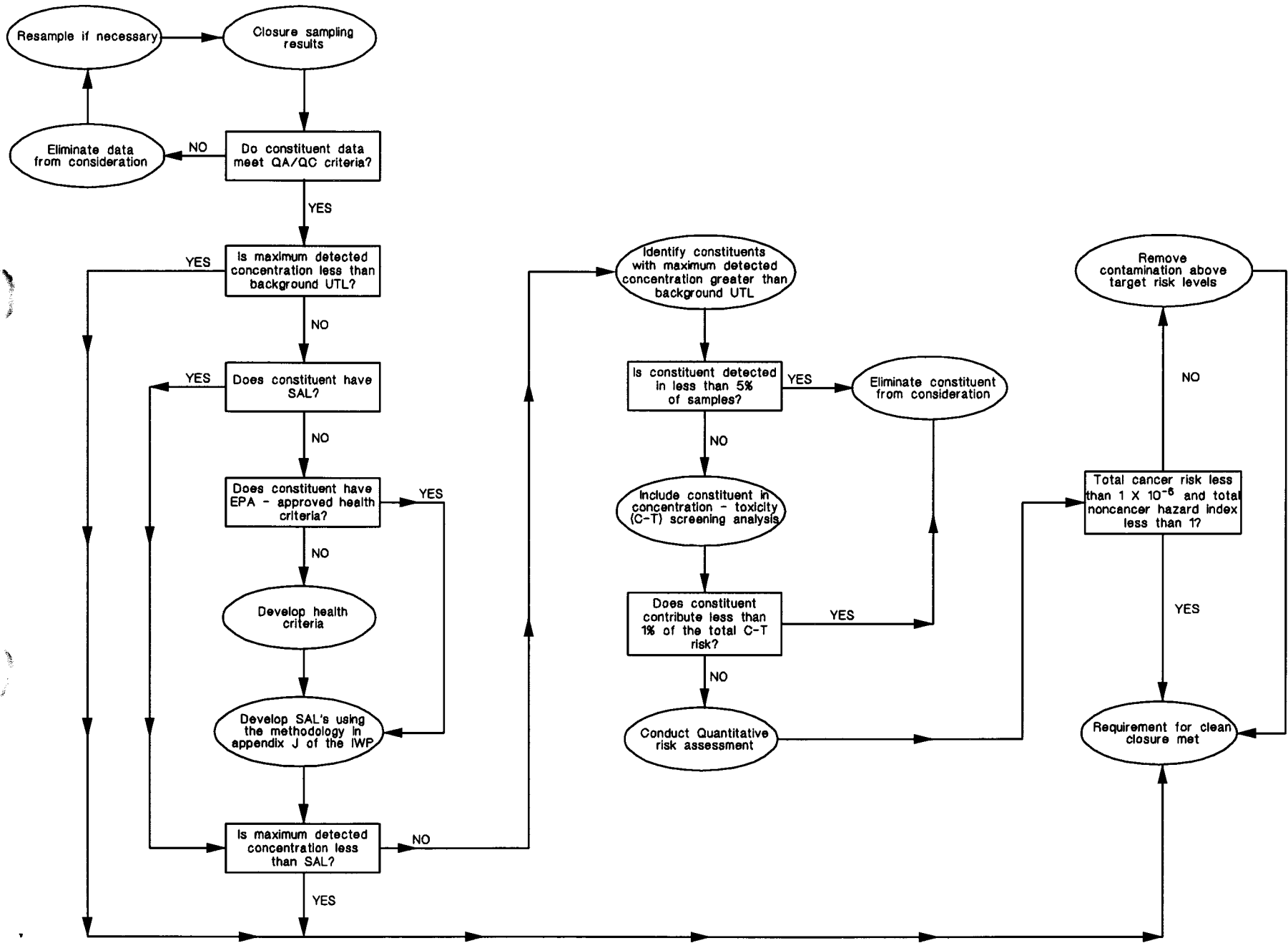


Figure K-1. Process for Determining if Closure Performance Standard is Met (see discussion in Section 5.1.1.2)

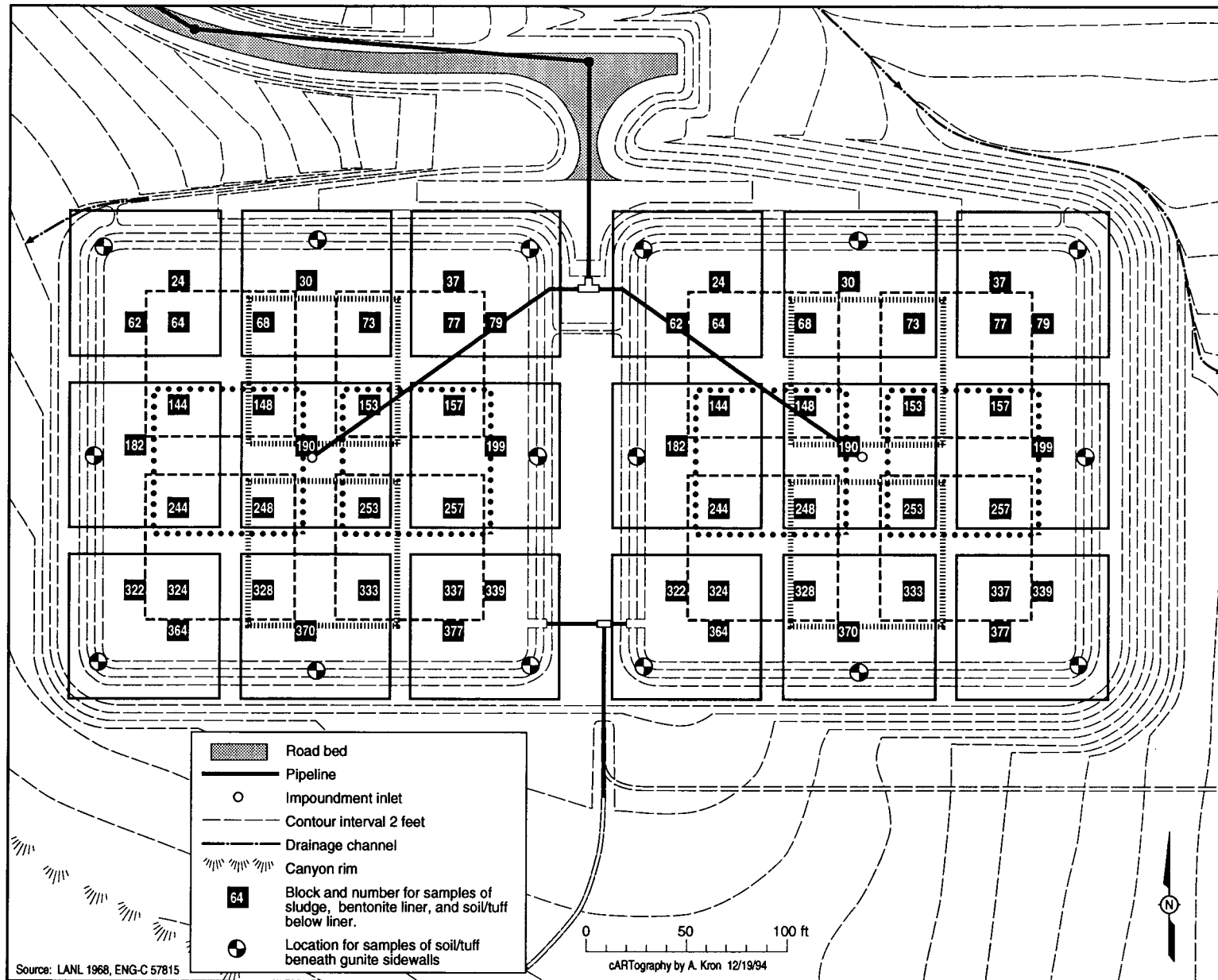


Figure K-2. Locations of Unit Risk Areas (500 m²)