

PNM
2401 Aztec Road NE
MS-Z110
Albuquerque, NM 87107
Fax 505 855-6320
www.pnm.com



May 6, 2005

Ms. Carolyn Cooper
New Mexico Environment Department
C/O DOE Oversight Bureau
P.O. Box 5400, MS 1396
Albuquerque, NM 87185-5400



**RE: Person Generating Station (NMT 360010342) – RCRA Post-Closure Care Permit
Modification Request**

Dear Ms. Cooper:

Per your request, enclosed is one color figure showing the four leach fields located at Person Generating Station. This figure has also been provided to you in electronic format.

If you have any questions, please contact me at (505) 24-2014.

Sincerely,

John Hale, P.E.
Technical Project Manager

Enclosure

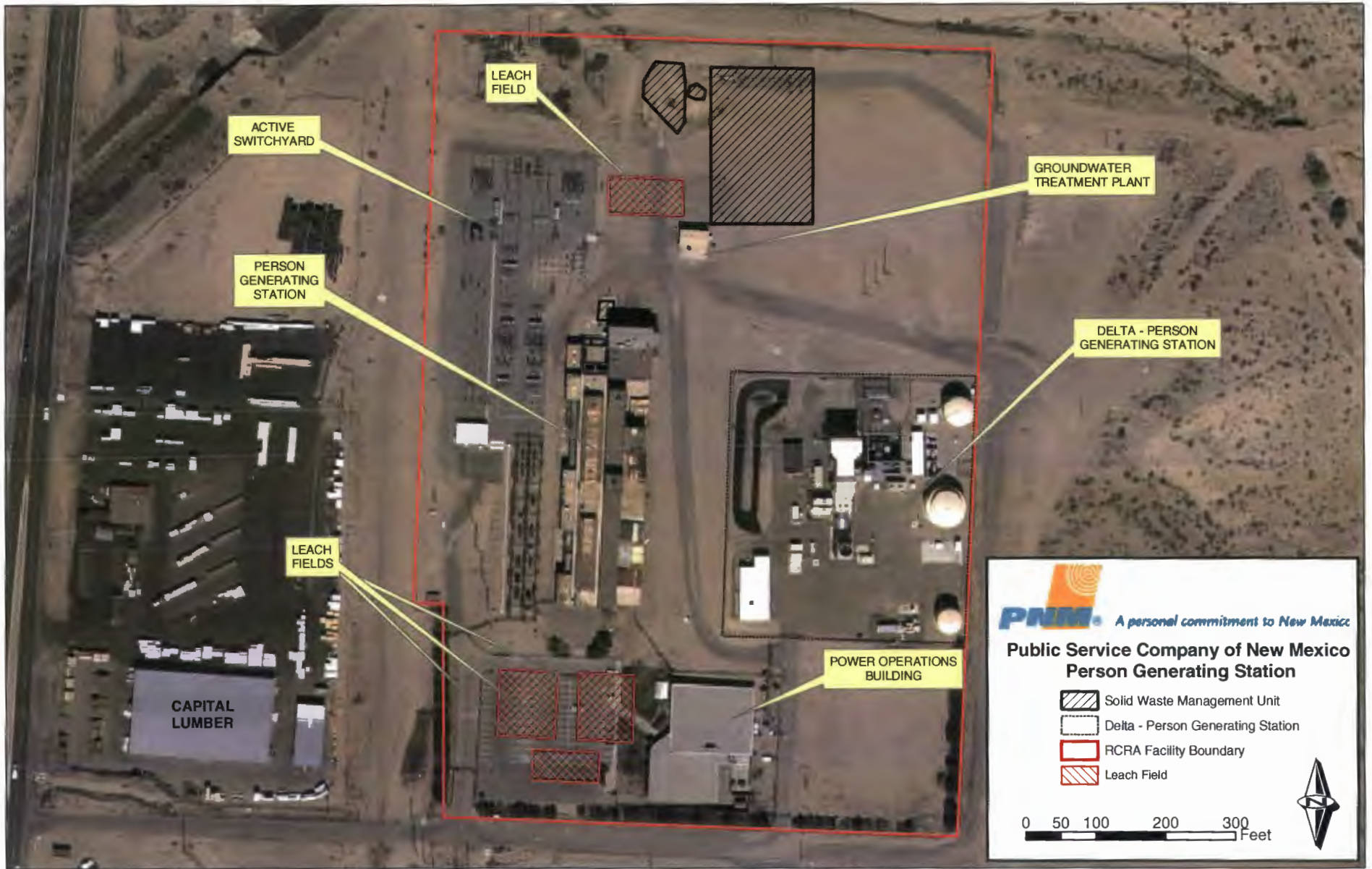


Figure 6. Four Leach Fields