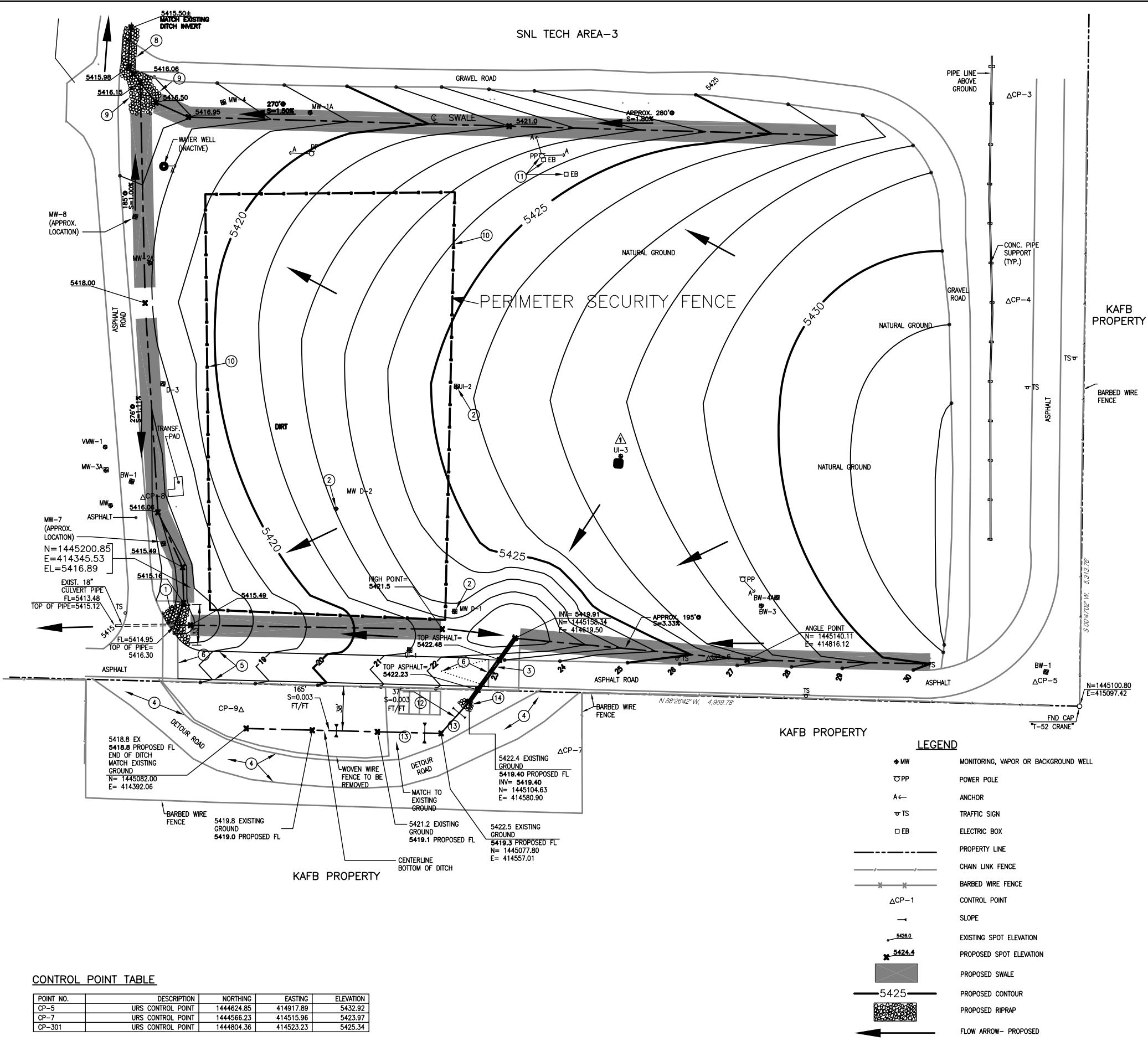


SNL TECH AREA-3



GENERAL NOTES:

1. SURVEY CONTROL COORDINATES ARE GRID, BASED ON NEW MEXICO STATE PLANE COORDINATE SYSTEM, CENTRAL ZONE, NAD 27 DATUM. DISTANCES ARE GROUND.
2. ELEVATIONS ARE NAVD 29 DATUM VALUES BASED ON SNL/KAFB BENCHMARK "UM 30", ELEVATION = 5395.45. CONTOUR INTERVAL IS 1 FOOT.
3. ONLY SURFACE APPURTENANCES OF UNDERGROUND UTILITIES ARE SHOWN. OTHER UTILITIES MAY EXIST THAT ARE NOT SHOWN ON THIS SURVEY. SNL ESD FILES WERE NOT INCORPORATED INTO THIS SURVEY.
4. EXISTING TOPOGRAPHIC SURVEY WAS DONE AUG. 8, 2002 BY VLADIMIR JIRIK AND IS SHOWN ON SNL DWG. NO. VF1001114
5. ALL RIPRAP WILL BE 18" THICK MINIMUM AND INCLUDE FILTER CLOTH. D<sub>50</sub> = 9".

KEYED NOTES:

- ① CONSTRUCT RIPRAP BLANKET TO DIMENSION SHOWN, MATCHING EDGE OF ASPHALT, PER GENERAL NOTE 5.
- ② CONTRACTOR TO ADJUST WELL HEIGHT TO MATCH PROPOSED GRADE PER SPECIFICATION SECTION 2670.
- ③ CONSTRUCT 66 LF CLASS IV 18" RCP @SLOPE= 0.77% WITH RCP FLARED END SECTIONS, BOTH SIDES.
- ④ REMOVE & DISPOSE TEMPORARY ASPHALT DETOUR ROAD AND RE-SEED PER SPECIFICATION SECTION 2930. INSTALL NEW FENCE AT PROPERTY LINE TO MATCH EXISTING.
- ⑤ CONSTRUCT NEW 24' WIDE ROAD PER TYPICAL SECTION SHOWN ON SHEET 3.
- ⑥ SAWCUT EXISTING PAVEMENT. PROVIDE 40' TRANSITION FROM EXISTING PAVEMENT TO TYPICAL SECTION.
- ⑦ NOT USED.
- ⑧ RIP RAP LINED LOW WATER CROSSING AS PER DETAIL ON SHEET 3.
- ⑨ CONSTRUCT APPROXIMATELY 60' LONG X 15' WIDE RIPRAP BLANKET PER GENERAL NOTE 5 AS SHOWN TO TRANSITION FROM SWALES TO V-DITCH.
- ⑩ APPROXIMATE LOCATION OF NEW PERIMETER FENCE. FENCE TO BE DETAILED AND INSTALLED BY OTHERS.
- ⑪ ADJUSTMENT TO GRADE OR REMOVAL AS NEEDED BY SNL.
- ⑫ STORAGE SHEDS TO BE RELOCATED BY SNL.
- ⑬ CONSTRUCT DRAINAGE SWALE. TRANSITION FROM "VEE" SECTION TO FLAT SECTION. MATCH EXISTING GROUND AT WEST END.
- ⑭ CONSTRUCT 6' LONG X 10' WIDE RIPRAP BLANKET PER GENERAL NOTE 5.

LEGEND

- ◆ MW MONITORING, VAPOR OR BACKGROUND WELL
- PP POWER POLE
- A ← ANCHOR
- ⊢ TS TRAFFIC SIGN
- EB ELECTRIC BOX
- PROPERTY LINE
- - - CHAIN LINK FENCE
- × × × BARBED WIRE FENCE
- △ CP-1 CONTROL POINT
- SLOPE
- 5426.0 EXISTING SPOT ELEVATION
- 5424.4 PROPOSED SPOT ELEVATION
- 5425 PROPOSED CONTOUR
- 5425 PROPOSED SWALE
- 5425 PROPOSED RIPRAP
- FLOW ARROW- PROPOSED

P.O. OR W.O.	REV	DATE	DESCRIPTION	DWN	CHK	APP

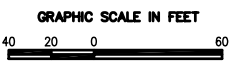
U.S. DEPARTMENT OF ENERGY  
KORTLAND AREA OFFICE ALBUQUERQUE, NEW MEXICO

SANDIA NATIONAL LABORATORIES  
ALBUQUERQUE, NEW MEXICO; LIVERMORE, CALIFORNIA; TONOPAH, NEVADA

FIGURE 12

CWL COVER GRADING PLAN  
SHOWING SURFACE DRAINAGE FEATURES  
AND FLOW LINES

CIVIL DATE AUGUST 2005



CONTROL POINT TABLE

POINT NO.	DESCRIPTION	NORTHING	EASTING	ELEVATION
CP-5	URS CONTROL POINT	1444624.85	414917.89	5432.92
CP-7	URS CONTROL POINT	1444566.23	414515.96	5423.97
CP-301	URS CONTROL POINT	1444804.36	414523.23	5425.34