



## U.S. Department of Justice

## Environment and Natural Resources Division

90-7-1-875

Environmental Enforcement Section  
P.O. Box 7611  
Washington, DC 20044-7611

Telephone (202) 514-4226  
Facsimile (202) 514-8395

September 26, 1997

By telefax  
James B. Harris  
Thompson & Knight  
1700 Pacific Ave, Suite 3300  
Dallas, Texas 75201-4693  
(214) 969-1102  
Fax: (214) 969-1751

Re: City of Albuquerque v. Sparton Technology, Inc., No. CV-97-0206 (D.N.M.)

Dear Jim:

Pursuant to our earlier discussions, attached please find a table comparing cost estimates for various soil vapor extraction ("SVE") systems prepared by EPA's contractor. The table compares cost estimate for three systems: (1) the Acuvac system proposed by Sparton, (2) the system proposed in the Corrective Measures Study ("the CMS system"), and (3) a system that would provide the increased vacuum rates which Plaintiffs have determined are required. ("the high vacuum system"). The cost estimates for the Acuvac based system are derived from information provided by Sparton's representatives during the previous conference calls on SVE. The cost estimates for the CMS system are based on information from the CMS report. As you can see, the total, combined capital and operation and maintenance costs over three years are approximately equal.

While I cannot make any specific representations regarding the matter, I have been informed that SVE system equipment previously used at the Digital site is for sale and may be suitable for application here. If that is the case, it may further reduce the cost of the high vacuum system. Dennis McQuillan of NMED should be able to provide you with contact information for Digital if you choose to pursue the matter.

I hope that this information will facilitate resolution of the technical disagreements between Sparton and Plaintiffs regarding design of an SVE system. If Sparton would like to further discuss these cost estimates or other issues related to an SVE system, I would be happy to arrange a conference call with appropriate technical personnel. If Sparton would like to have such a call, please let me know when your personnel are available.

Sincerely,

Michael T. Donnellan

cc: counsel of record

COST COMPARISON OF EPA ESTIMATE USING CARBON TREATMENT FOR OFF-GAS, ACCUVAC™ SYSTEM AND CMS ESTIMATED VALUES				
		ACCUVAC System	CMS Estimate	USEPA COST ESTIMATE USING CARBON TREATMENT
<b>YEAR 1</b>				
	<b>Capital</b>			
	Accuvac System*	\$ 45,000		
	Capital Equipment**		\$ 85,000	
	Capital Equipment***			\$ 35,000
	Installation & Startup***			\$ 6,600
	<b>Operation &amp; Maintenance</b>			
	Major Maintenance Agree *	\$ 12,000		
	Monthly Minor Maintenance*			
	@ \$1,200/Mo	\$ 14,400		
	Annual O&M**		\$ 16,465	
	Annual O&M***			\$ 11,670
	Annual Carbon Purchase & Disposal ***			\$ 45,114
	Analytical ***			\$ -
	<b>TOTAL YEAR 1</b>	<b>\$ 71,400</b>	<b>\$101,465</b>	<b>\$ 98,384</b>

COST COMPARISON OF EPA ESTIMATE USING CARBON TREATMENT FOR O (CONTINUED)				
ACCUVAC™ SYSTEM AND CMS ESTIMATED VALUES				
	ACCUVAC System	CMS Estimate	USEPA COST ESTIMATE USING CARBON TREATMENT	
<b>YEAR 2</b>				
<b>Operation &amp; Maintenance</b>				
Major Maintenance Agree*	\$ 12,000			
Monthly Minor Maintenance*				
@ \$1,200/Mo	\$ 14,400			
Annual O&M**		\$ 16,465		
Annual O&M***			\$ 7,260	
Annual Carbon Purchase & Disposal ***			\$ 13,250	
Analytical ***			\$ -	
<b>TOTAL YEAR 2</b>	<b>\$ 26,400</b>	<b>\$ 16,465</b>	<b>\$ 20,510</b>	

COST COMPARISON OF EPA ESTIMATE USING CARBON TREATMENT FOR O (CONTINUED) ACCUVAC™ SYSTEM AND CMS ESTIMATED VALUES			
	ACCUVAC System	CMS Estimate	USEPA COST ESTIMATE USING CARBON TREATMENT
<b>YEAR 3</b>			
<b>Operation &amp; Maintenance</b>			
Major Maintenance Agree*	\$ 12,000		
Monthly Minor Maintenance* @ \$1,200/Mo	\$ 14,400		
Annual O&M**		\$ 16,465	
Annual O&M***			\$ 6,600
Annual Carbon Purchase & Disposal***			\$ 5,820
Analytical***			\$ -
<b>TOTAL YEAR 3</b>	<b>\$ 26,400</b>	<b>\$ 16,465</b>	<b>\$ 12,220</b>
<b>SUMMARY 3 YEAR TOTAL</b>	<b>\$ 124,200</b>	<b>\$ 134,395</b>	<b>\$ 131,114</b>

\* Based on conference call dated September 11, 1997 with Mr. Pierce Chandler, Mr. Gary Richardson, NMED, and U.S. EPA.

\*\* Based on Figure 40 - Vapor Extraction System Costs, page VII-56 of the Draft Final CMS, May 6, 1996

\*\*\* See attachment regarding Carbon Usage and Cost Estimate

**SPARTON SVE SYSTEM  
EQUIPMENT LIST**

Condensate Separator  
Condensate Pump  
Condensate Storage Tank  
Air Filter  
Blower  
Silencer  
Vapor Phase Carbon Treatment Units  
Control Panel  
LEL Sensor  
Heater  
Valves & Fittings  
Meters  
Gauges  
Level Switches  
Sample Ports  
Building or Trailer

EM 1110-1-400:  
30 NOV 92

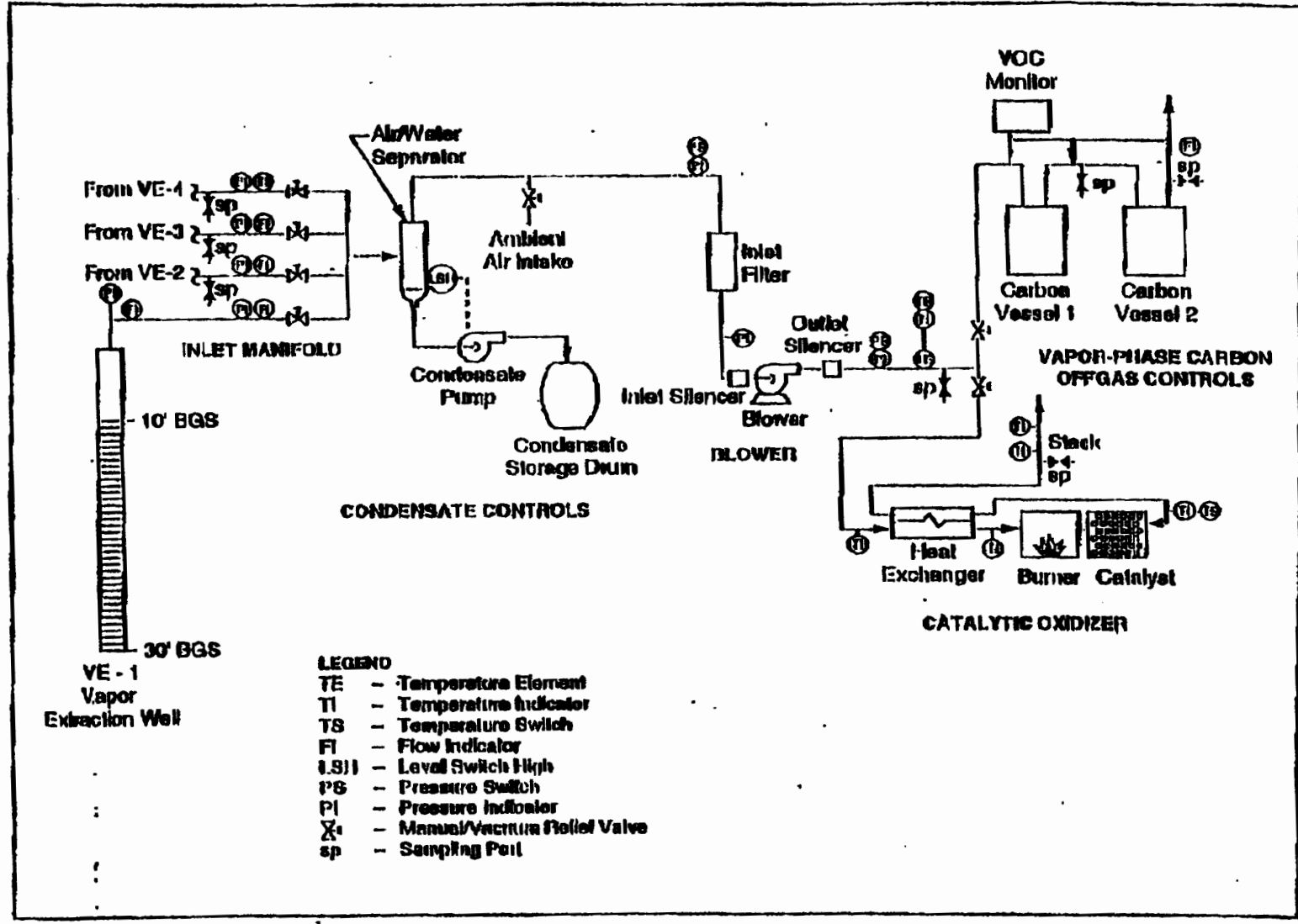


Figure 8-26. Typical BVE preliminary P&I diagram

SPARTON SVE SYSTEM

Month	GTE Site VOC (lb/day)	Sparton Estimate VOC (lb/day)	Sparton Monthly VOC (lb)	Sparton Monthly Volume (gal)	Sparton Approx. Carbon Usage (lb/day)	Sparton Monthly Carbon Usage* (lb)	Sparton Monthly Carbon Cost (dollars)	Sparton Monthly Power Cost* (dollars)	Sparton Monthly O&M Cost (dollars)	TOTAL MONTHLY COSTS (\$)	ANNUAL TOTALS FOR O&M & POWER	ANNUAL TOTAL FOR CARBON USE	ANNUAL TOTAL COSTS
1	20	147	4422	363.2	329	9861	\$14,792	\$220	2650	\$17,662			
2	13	96	2874	236.1	214	6410	\$9,615	\$220	1320	\$11,155			
3	7	52	1548	127.1	115	3451	\$5,177	\$220	880	\$6,277			
4	4	29	884	72.6	66	1972	\$2,958	\$220	440	\$3,618			
5	2.6	18	553	45.4	41	1233	\$1,849	\$220	440	\$2,509			
6	2.5	18	553	45.4	41	1233	\$1,849	\$220	440	\$2,509			
7	2	15	442	36.3	33	986	\$1,479	\$220	880	\$2,579			
8	2	15	442	36.3	33	986	\$1,479	\$220	330	\$2,029			
9	2	15	442	36.3	33	986	\$1,479	\$220	330	\$2,029			
10	2	15	442	36.3	33	986	\$1,479	\$220	330	\$2,029			
11	2	16	442	36.3	33	986	\$1,479	\$220	330	\$2,029			
12	2	15	442	36.3	33	986	\$1,479	\$220	680	\$2,359	\$11,670	45114	\$56,784
13		12	360	29.6	27	803	\$1,204	\$220	330	\$1,754			
14		12	360	29.6	27	803	\$1,204	\$220	330	\$1,754			
15		12	360	29.6	27	803	\$1,204	\$220	330	\$1,754			
16		12	360	29.6	27	803	\$1,204	\$220	330	\$1,754			
17		12	360	29.6	27	803	\$1,204	\$220	660	\$2,084			
18		12	360	29.6	27	803	\$1,204	\$220	330	\$1,754			
19		10	300	24.6	22	669	\$1,004	\$220	330	\$1,554			
20		10	300	24.6	22	669	\$1,004	\$220	330	\$1,554			
21		10	300	24.6	22	669	\$1,004	\$220	330	\$1,554			
22		10	300	24.6	22	669	\$1,004	\$220	330	\$1,554			
23		10	300	24.6	22	669	\$1,004	\$220	660	\$1,884			
24		10	300	24.6	22	669	\$1,004	\$220	330	\$1,554	\$7,260	13246	\$20,506

SEP-26-97 FRI 14:47

HETCALF & EDDY

FAX NO. 8148907421

P. 07

008

US DOJ ENRD/EES

09/26/97 FRI 16:00 FAX 202 514 0097

pc:\proj\sparton\sparton.xls

SPARTON SVE SYSTEM

Month	GTE Site VOC (lb/day)	Sparton Estimate VOC (lb/day)	Sparton Monthly VOC (lb)	Sparton Monthly Volume (gal)	Sparton Approx. Carbon Usage (lb/day)	Sparton Monthly Carbon Usage <sup>1</sup> (lb)	Sparton Monthly Carbon Cost (dollars)	Sparton Monthly Power Cost <sup>2</sup> (dollars)	Sparton Monthly O&M Cost (dollars)	TOTAL MONTHLY COSTS (\$)	ANNUAL TOTALS FOR O&M & POWER	ANNUAL TOTAL FOR CARBON USE	ANNUAL TOTAL COSTS
25		8	240	19.7	18	535	\$803	\$220	330	\$1,353			
26		8	240	19.7	18	535	\$803	\$220	330	\$1,353			
27		8	240	19.7	18	535	\$803	\$220	330	\$1,353			
28		8	240	19.7	18	535	\$803	\$220	330	\$1,353			
29		4	120	9.9	9	268	\$401	\$220	330	\$951			
30		4	120	9.9	9	268	\$401	\$220	330	\$951			
31		4	120	9.9	9	268	\$401	\$220	330	\$951			
32		4	120	9.9	9	268	\$401	\$220	330	\$951			
33		2	60	4.9	4	134	\$201	\$220	330	\$751			
34		2	60	4.9	4	134	\$201	\$220	330	\$751			
35		2	60	4.9	4	134	\$201	\$220	330	\$751			
36		2	60	4.9	4	134	\$201	\$220	330	\$751	\$6,800	5620	\$12,220
<b>3 YEAR TOTAL</b>			<b>19127</b>	<b>1571</b>		<b>42553</b>	<b>\$63,880</b>	<b>\$7,920</b>	<b>\$17,610</b>	<b>\$89,510</b>			<b>\$89,510</b>

<sup>1</sup>Carbon costs based on non-hazardous disposal.

<sup>2</sup>Power costs based on \$0.08 per KWH

SEP-28-97 / FRI 14:47

METCALF & EDDY

FAX NO. 6148907421

P. 08