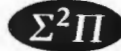


ST 01

Sparton Fill



S. S. PAPADOPULOS & ASSOCIATES, INC.  
ENVIRONMENTAL & WATER-RESOURCE CONSULTANTS



S. S. PAPADOPULOS  
S. P. LARSON  
C. B. ANDREWS

June 11, 2001

United States Environmental Protection Agency  
Region VI - Technical Section (6EN-HX)  
Compliance Assurance & Enforcement Division  
1445 Ross Avenue  
Dallas, TX 75202  
Attn: Sparton Technology, Inc. Project Coordinator Michael Hebert

(3 copies)

✓ Director  
Water & Waste Management Division  
New Mexico Environment Department  
1190 St. Francis Drive, 4<sup>th</sup> Floor  
Santa Fe, NM 87505

(1 copy)

Chief  
Hazardous & Radioactive Materials Bureau  
New Mexico Environment Department  
1190 St. Francis Drive, 4<sup>th</sup> Floor  
Santa Fe, NM 87505

(1 copy)

Chief  
Groundwater Bureau  
New Mexico Environment Department  
1190 St. Francis Drive, 4<sup>th</sup> Floor  
Santa Fe, NM 87505

(1 copy)

Subject: Sparton Technology, Inc. Former Coors Road Plant Remedial Program  
2000 Annual Report - Errata List

Gentlemen:

The subject report was transmitted on behalf of Sparton Technology, Inc. (Sparton) by S. S. Papadopoulos & Associates, Inc. (SSP&A) on May 17, 2001. Upon further internal review, SSP&A discovered that the report had a few minor typographical errors, a missing figure, and an incorrect figure. Another typographical error was kindly brought to our attention during a telephone conversation we had with Mr. Michael Hebert. The attached document presents an errata list for the report, and the missing and corrected figures. We apologize for these errors, and we hope that they have not caused you undue inconvenience.

United States Environmental Protection Agency  
New Mexico Environment Department  
June 11, 2001  
Page 2

I certify under penalty of law that this document and all attachments were prepared under my direction and supervision in accordance with a system designed to assure that qualified personnel properly gather and evaluate the information submitted. Based upon my inquiry of either the person or persons who manage the system and/or the person or persons directly responsible for gathering the information, the information submitted is, to the best of my knowledge and belief, true, accurate, and complete. I further certify, to the best of my knowledge and belief, that this document is consistent with the applicable requirements of the Consent Decree entered among the New Mexico Environment Department, the U.S. Environmental Protection Agency, Sparton Technology, Inc., and others in connection with Civil Action No. CIV 97 0206 LH/JHG, United States District Court for the District of New Mexico. I am aware that there are significant penalties for submitting false information, including the possibility of fine and imprisonment for knowing violations.

If you have any questions concerning this document, please contact me.

Sincerely,

S. S. PAPANOPULOS & ASSOCIATES, INC.



Stavros S. Papadopoulos, PhD, PE  
Founder & Senior Principal

cc: Secretary, Sparton Technology, Inc., w/ 1 copy  
Mr. R. Jan Appel, w/1 copy  
Mr. James B. Harris, w/1 copy  
Mr. Tony Hurst, w/2 copies  
Mr. Gary L. Richardson, w/1 copy

SPARTON TECHNOLOGY, INC.  
FORMER COORS ROAD PLANT  
REMEDIAL PROGRAM

2000 ANNUAL REPORT

ERRATA LIST



1. Page ES-2 and page 7-2
  - a) First paragraph after the bulleted paragraph, line 4:  
Change “of initial the” to “of the initial”.
  - b) Fourth paragraph after the bulleted paragraph, line 3:  
Change “of all TCE” to “of TCE”.
  
2. Page 7-4
  - a) Line 2:  
Change “MW-13” to “MW-37”.
  - b) Line 5:  
Change “MW-13” to “MW-15”.
  
3. Figure 2.17 was inadvertently omitted during the assembly of the report. A copy of this figure is attached; please insert after Figure 2.16.
  
4. A revised Figure 6.10 is attached; please replace the original Figure 6.10 of the report with this revised figure. The original Figure 6.10 contained three depictions of the TCE plume (November 1998, October 1999, and November 2000) based on the model presented in the 1999 Annual Report, and one depiction (November 2001) based on the model as it was revised for the 2000 Annual Report. In the revised Figure 6.10, all four depictions of the TCE plume are based on the improved version of the model presented in the 2000 Annual Report.

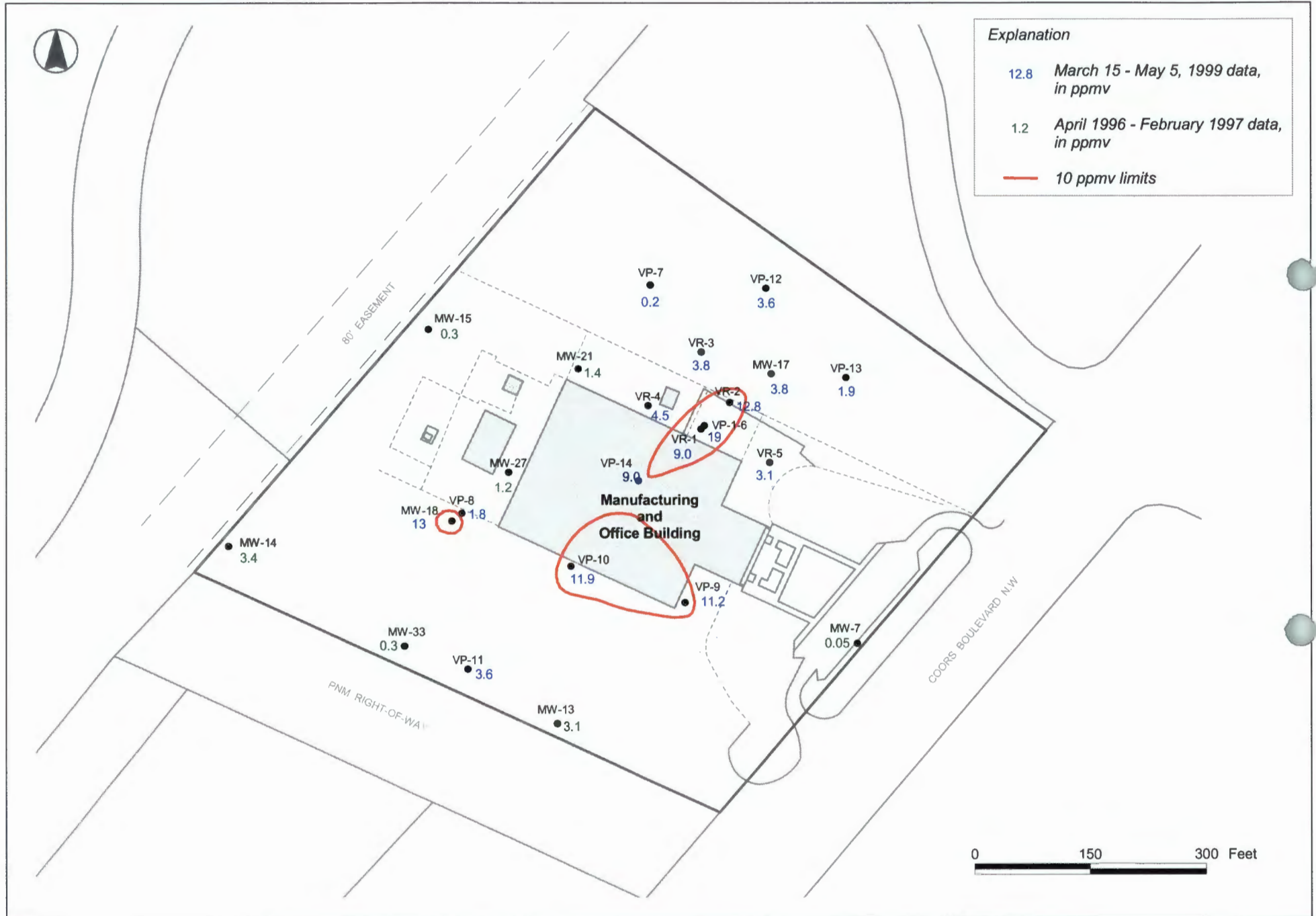


Figure 2.17 TCE Soil Gas Concentrations Prior to the 1999 Resumption of SVE System Operations

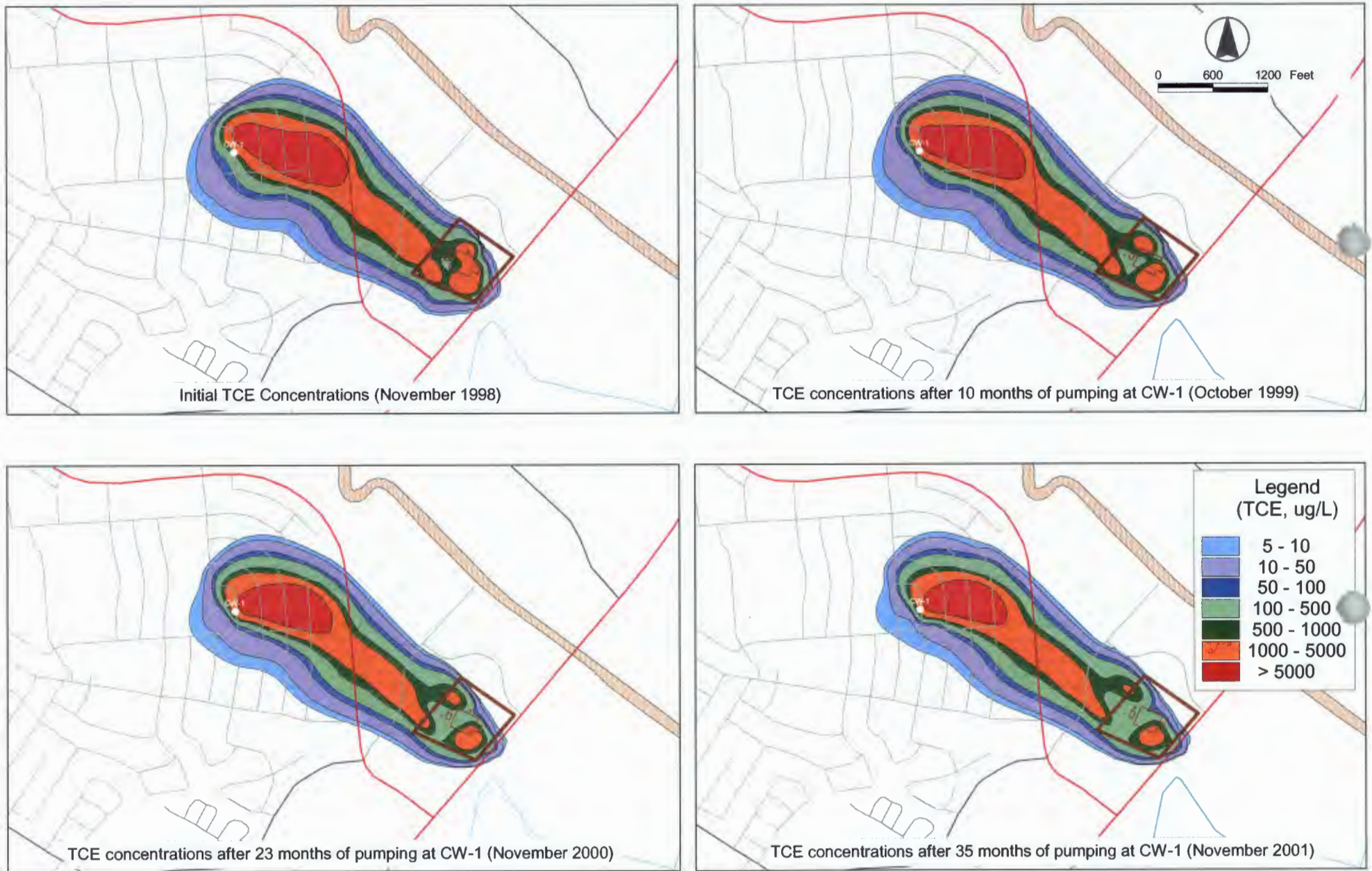


Figure 6.10 TCE Concentrations Calculated with the Recalibrated Model