

ORIGINALS WERE PUT INTO THE REV. PART A #9
Table 3-1
Temperatures at Roswell, 1977 to 1978

Month	Monthly average	Temperature (°F) Average Daily Maximum	Average Daily Minimum
January	38.1	55.4	20.8
February	42.9	60.9	24.8
March	49.3	57.7	30.9
April	59.7	78.2	41.2
May	68.5	86.4	50.5
June	77.0	94.2	59.8
July	79.2	94.7	63.7
August	77.9	93.4	62.3
September	70.4	86.5	54.3
October	59.6	77.0	42.2
November	46.9	64.8	29.0
December	39.3	56.8	21.8
Annual	59.1	76.3	41.8

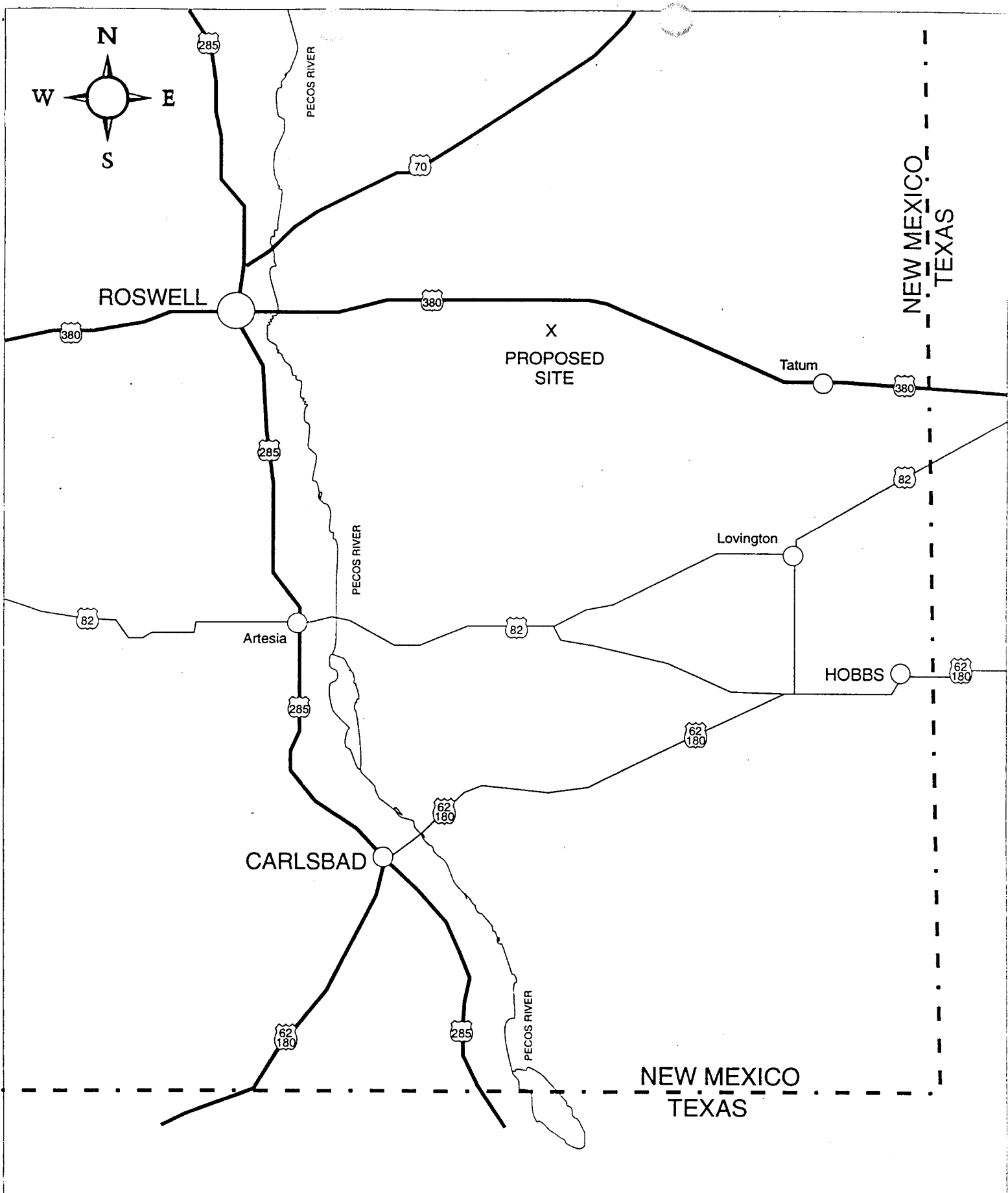
Table 3-2
Monthly and Annual Precipitation Summary for Roswell
1977 through 1982

	Jan	Feb	Mar	Apr	May	Jun	Jul	Aug	Sep	Oct	Nov	Dec	Annual	Departure
1977	0.07	0.36	0.27	1.25	2.43	0.25	0.46	4.45	0.29	0.62	0.48	0.02	10.95	0.34
1978	0.50	0.48	0.39	0.02	1.81	4.31	0.52	3.49	3.58	1.47	1.25	0.43	18.25	7.64
1979	0.41	0.44	0.13	0.32	1.25	1.56	1.44	2.28	0.15	0.18	T	0.37	8.53	-2.08
1980	0.85	0.19	0.00	1.06	0.85	0.29	0.01	2.45	6.58	T	0.77	0.15	13.20	2.59
1981	0.27	0.17	0.10	0.79	3.35	4.55	6.27	4.73	2.70	1.02	0.25	0.13	24.33	13.72
1982	0.66	0.20	0.12	0.41	0.20	0.76	1.03	0.93	2.00	0.20	0.92	1.62	9.05	-1.56

Normal = 10.61

T = trace

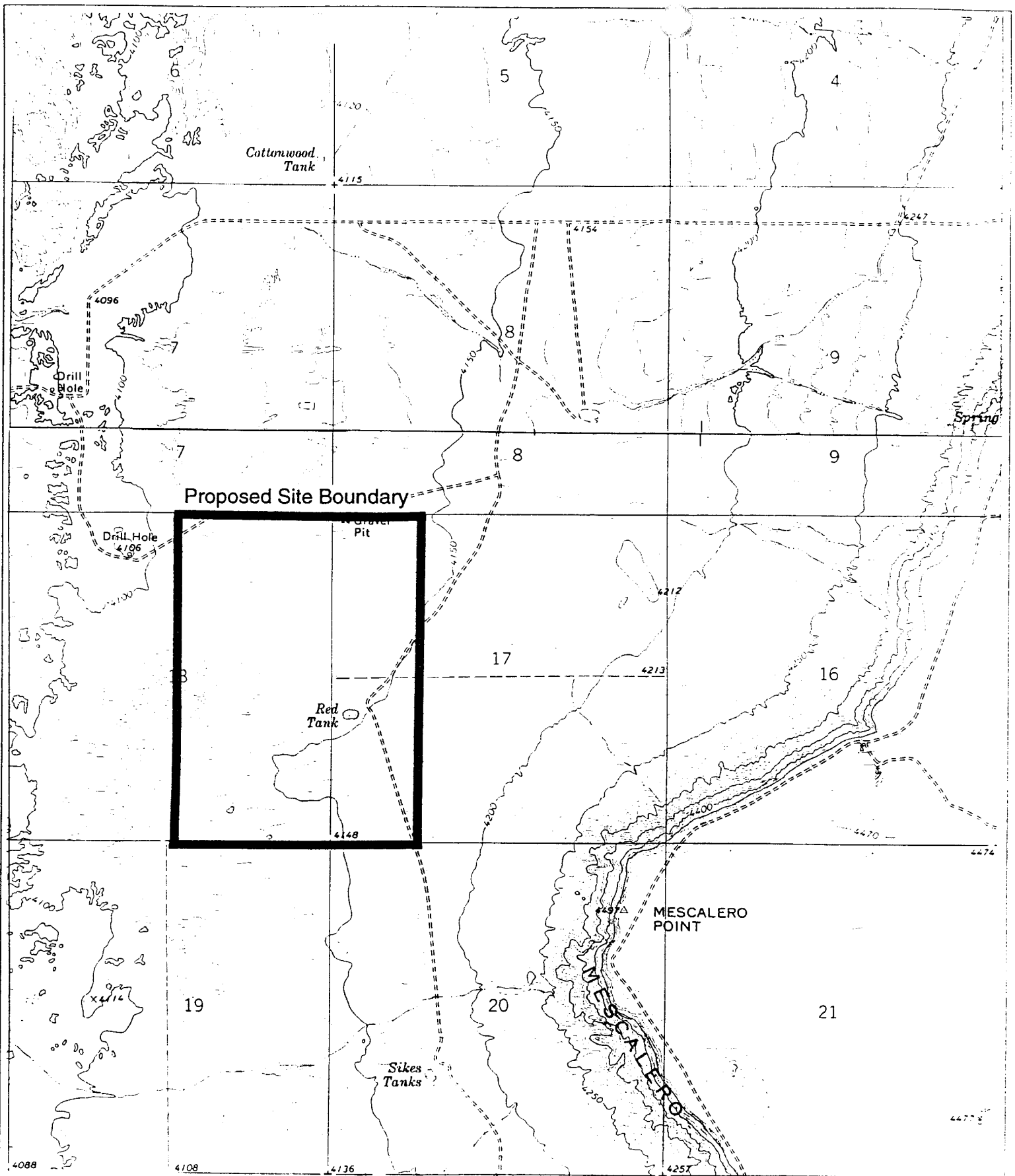




INDEX MAP - PROPOSED SITE
SOUTH EAST NEW MEXICO
GANDY MARLEY PROJECT

Figure 3-1

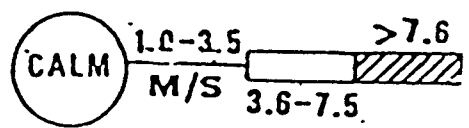
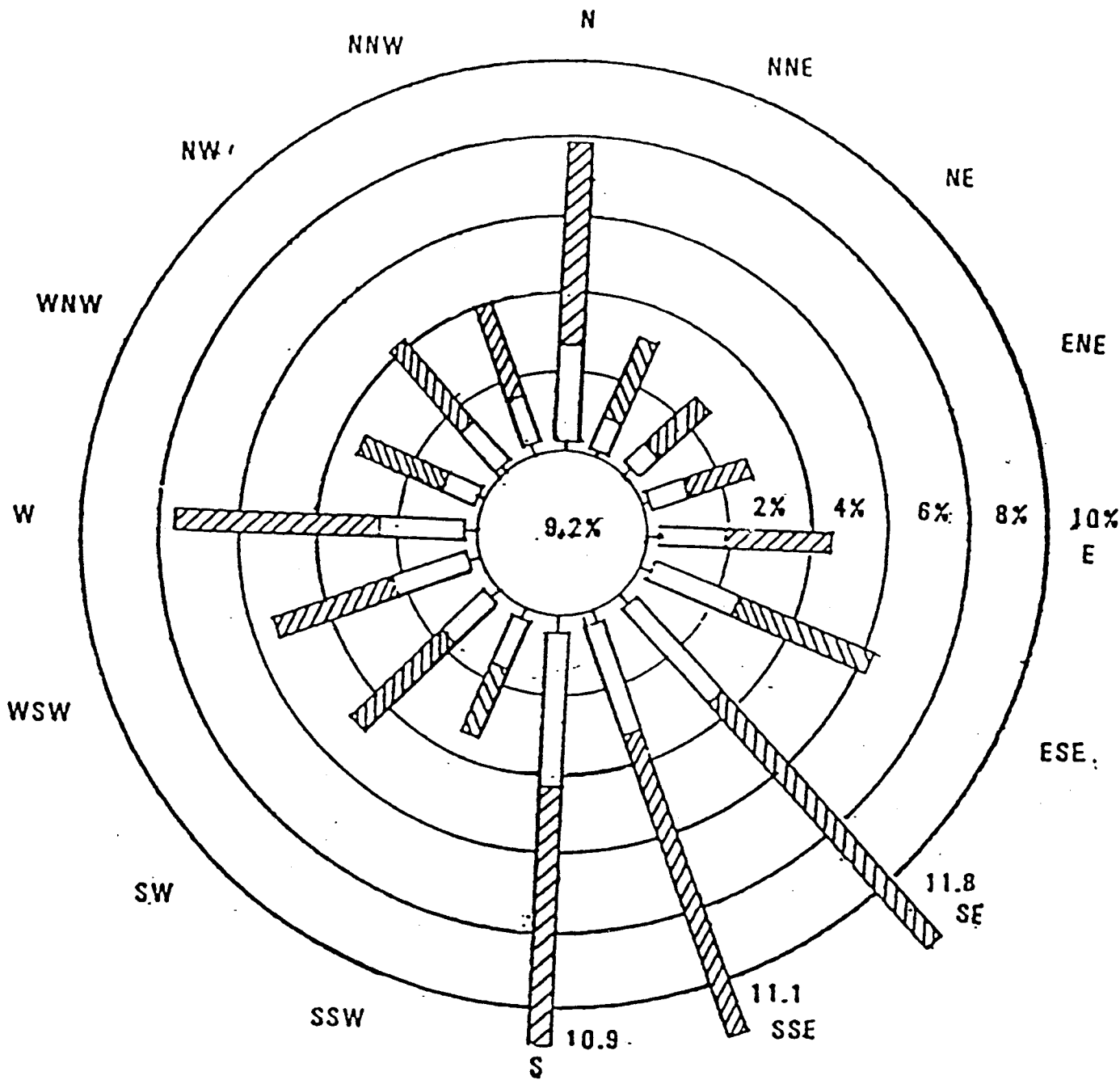
ONE INCH = 16 MILES



TOPOGRAPHY
SOUTH EAST NEW MEXICO
GANDY MARLEY PROJECT

Figure 3-2

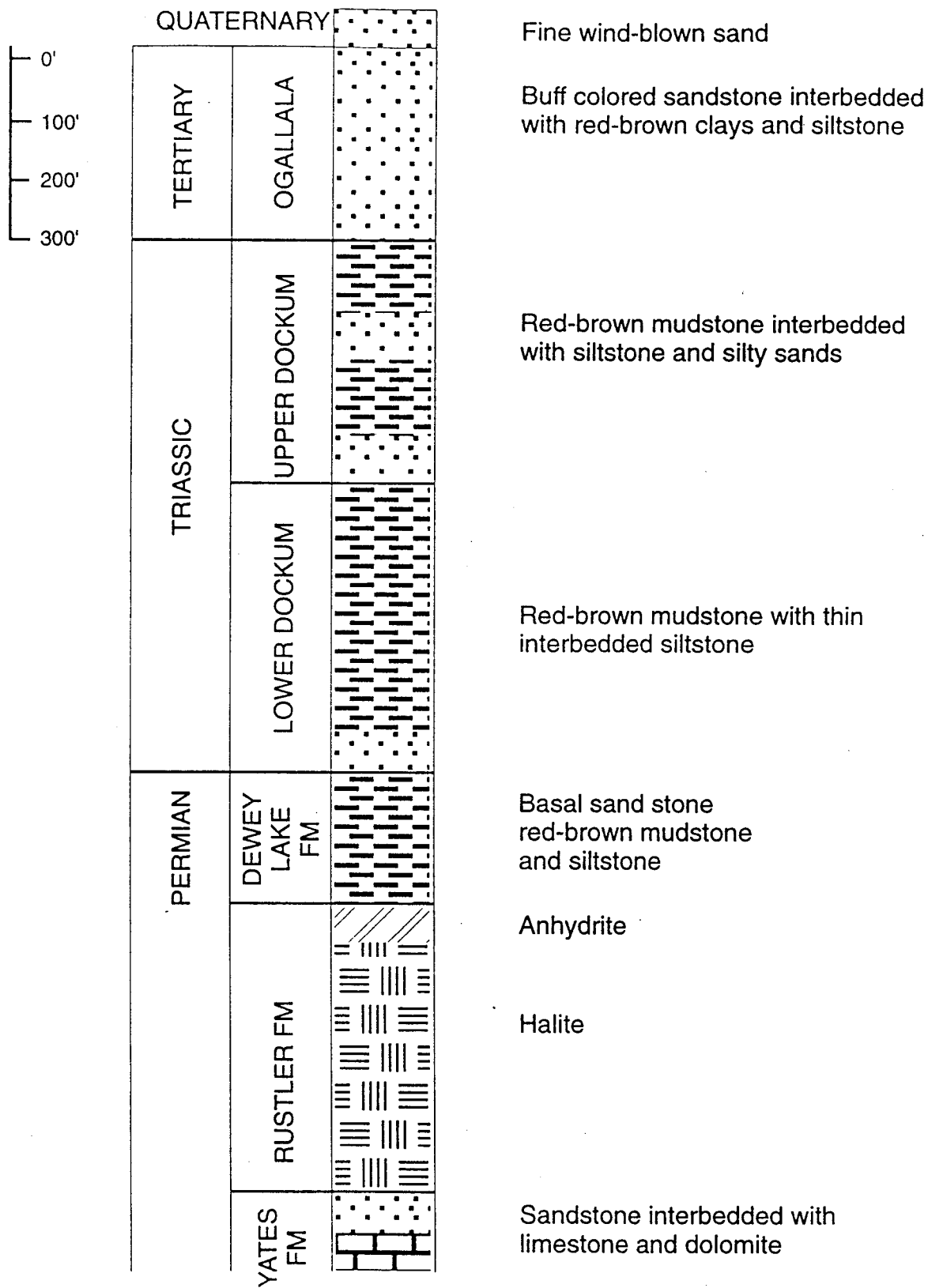
ONE INCH = 2000'



WIND ROSE
SOUTH EAST NEW MEXICO
GANDY MARLEY PROJECT

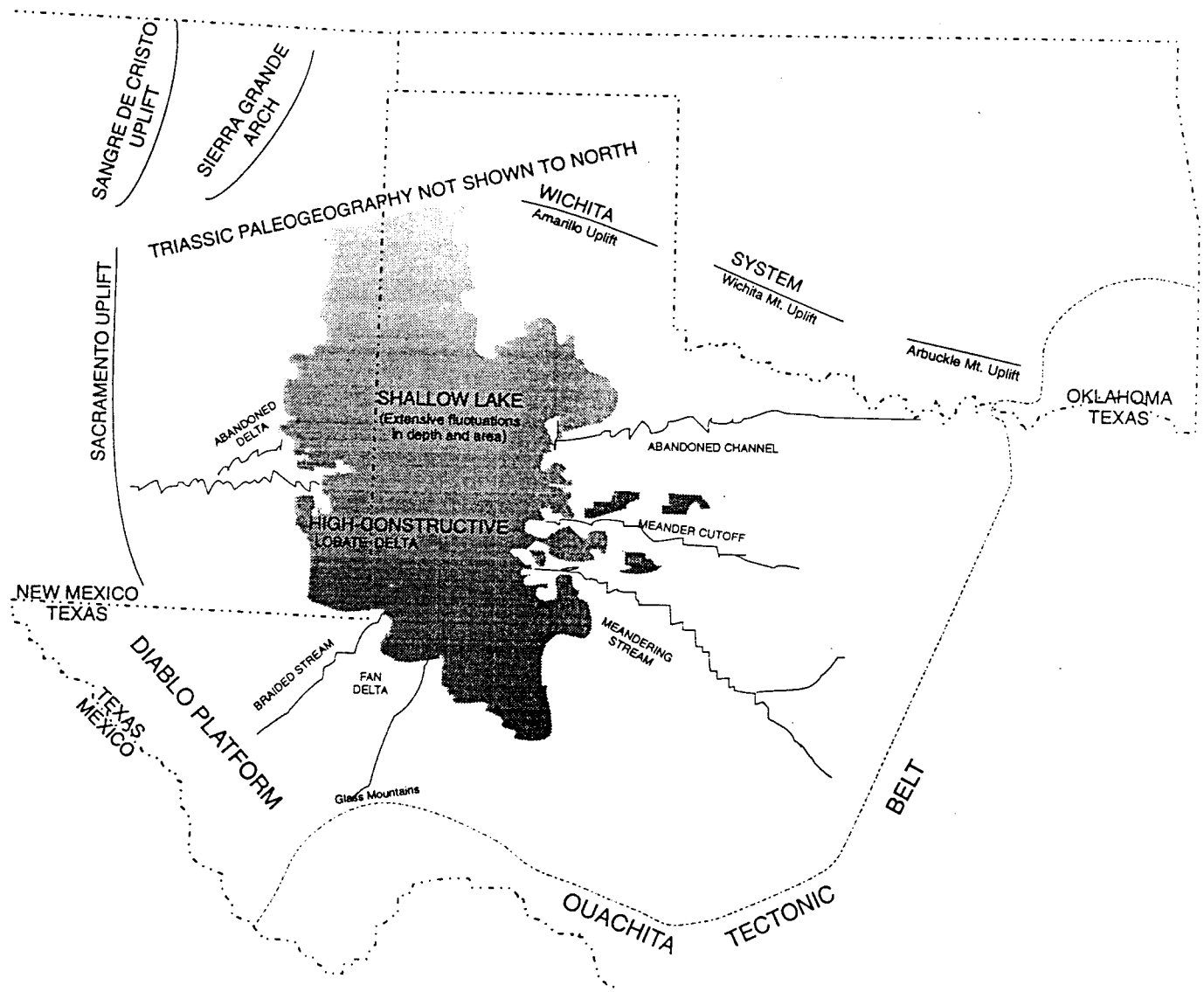
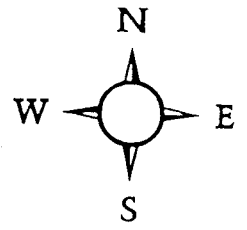
Figure 3-3

ONE INCH = 2000'



STRATIGRAPHIC COLUMN
SOUTH EAST NEW MEXICO
GANDY MARLEY PROJECT

Figure 3-4



After McGowen (1979)

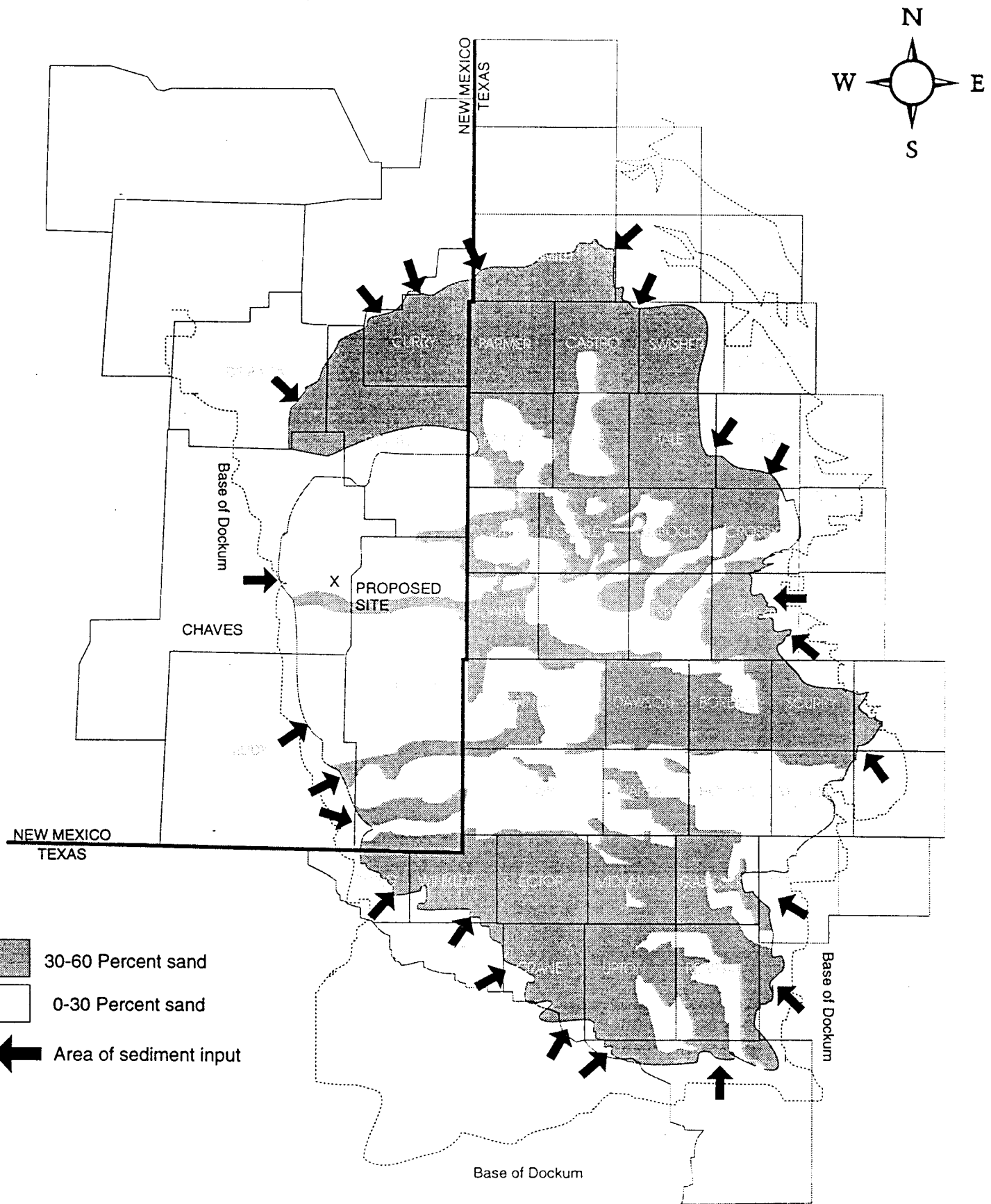
TRIASSIC BASIN-PALEOMAP

NEW MEXICO - TEXAS

GANDY MARLEY PROJECT

Figure 3-5

ONE INCH ~100 MILES



TRIASSIC BASIN-SUBSURFACE
NEW MEXICO - TEXAS
GANDY MARLEY PROJECT

Figure 3-6

ONE INCH = 54 MILES