



TORNADO PROJECT
online

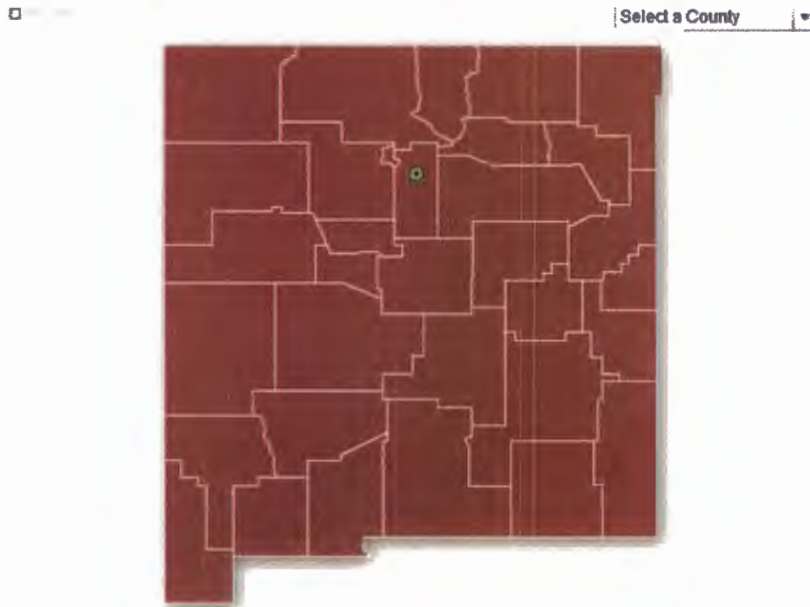
HOME TORNADO SAFETY PRODUCTS THE STORM CELLAR TORNADO DATA ABOUT US

New Mexico Tornadoes 1950-2012

This page lists the date and location of all the tornadoes that have occurred in New Mexico from the year 1950. If you are interested in reading about the "worst" tornadoes that have struck New Mexico (and all other states), [see this page on our site](#). If you want to find out about specific tornadoes that have occurred since 2012, check out the [NCDC Storm Events page](#).

Move your mouse over the map to see the county name and FIPS number (Federal Information Processing Standard). Click on the county or use the drop-down menu to navigate to your county of interest.

From there you can find data on each county that has had tornadoes since 1950. You will find the tornado ID number, the date, the event number, the time it occurred, the number of deaths and/or injuries caused, the F-Scale or EF-Scale, and the map coordinates. You can even copy the beginning and ending set of map coordinates into Google maps to see the path that the tornado took. If your county is not listed, it has not had a tornado officially listed during this period.



all times are Central Standard Time

Bernalillo County Tornadoes

ID	Date	Event Num	Time	Dead	Inj	F-Scale	Beg Coor	End Coor	County
503	MAY 31, 1957	14	15:15	0	0	0	34.92 -106.75	00.00	0 1
757	OCT 19, 1957	16	16:30	0	0	0	35.30 -106.70	00.00	0 1
483	MAY 31, 1965	3	19:45	0	0	1	35.18 -106.58	00.00	0 1
48	MAR 27, 1970	1	11:36	0	0	0	35.00 -106.60	00.00	0 1
722	AUG 5, 1980	3	16:56	0	0	0	35.05 -106.82	00.00	0 1
630	SEP 20, 1985	5	15:25	0	0	0	35.08 -106.57	00.00	0 1
72	APR 12, 1987	1	14:30	0	0	0	34.88 -106.57	00.00	0 1

330	JUN 29, 1987	11	16:00	0	0	0	35.08	-106.55	00.00	0	1
887	JULY 14, 1990	6	19:11	0	0	0	35.08	-106.57	00.00	0	1
531	MAY 15, 1991	4	16:15	0	0	0	35.08	-106.57	00.00	0	1
67	APR 16, 2005	1	15:18	0	0	0	35.05	-106.65	35.05	-106.65	1
339709	AUG 3, 2011	2	15:36	0	0	0	34.99	-106.48	34.99	-106.48	1



Catron County Tornadoes

ID	Date	Event Num	Time	Dead	Inj	F-Scale	Beg Coor	End Coor	County
MAY 16, 1929	001			0	0	F1	003		



Chaves County Tornadoes

ID	Date	Event Num	Time	Dead	Inj	F-Scale	Beg Coor	End Coor	County		
105	JUN 5, 1951	1	15:30	0	0	0	33.10	-104.80	00.00	0	5
442	JUN 14, 1961	8	18:30	0	2	1	33.20	-104.50	00.00	0	5
403	JUN 12, 1962	7	16:00	0	0	2	33.40	-104.50	00.00	0	5
514	JLY 11, 1962	8	16:00	0	0	0	33.20	-104.80	00.00	0	5
300	JUN 19, 1963	4	19:40	0	0	0	33.30	-104.37	00.00	0	5
641	SEP 21, 1964	11	18:45	0	0	1	33.50	-104.50	00.00	0	5
549	JUN 10, 1965	5	18:15	0	3	1	33.40	-104.50	00.00	0	5
550	JUN 10, 1965	6	20:00	0	0	1	33.30	-104.50	00.00	0	5
600	JUN 25, 1965	10	13:40	0	0	0	33.48	-104.50	00.00	0	5
503	AUG 31, 1966	14	16:00	0	0	1	33.27	-104.43	00.00	0	5
363	JUN 4, 1967	2	17:00	0	0	1	33.50	-104.50	00.00	0	5
235	MAY 25, 1970	8	11:40	0	0	0	33.40	-104.33	00.00	0	5
251	MAY 11, 1972	7	16:30	0	0	0	33.47	-104.50	00.00	0	5
459	JUN 29, 1972	12	20:02	0	0	0	33.00	-104.40	00.00	0	5
799	AUG 11, 1974	5	15:00	0	0	2	33.22	-104.53	00.00	0	5
548	JUN 29, 1981	4	16:20	0	0	1	33.33	-104.62	00.00	0	5
656	SEP 4, 1986	2	18:55	0	0	0	33.55	-104.52	00.00	0	5
537	SEP 22, 1988	9	19:42	0	0	0	33.03	-104.52	00.00	0	5
538	SEP 22, 1988	10	20:00	0	0	0	33.12	-104.37	00.00	0	5
189	APR 21, 1990	1	22:20	0	0	0	33.37	-104.55	00.00	0	5
190	APR 22, 1990	2	17:28	0	0	0	33.37	-104.55	00.00	0	5
191	APR 22, 1990	3	18:10	0	0	0	33.38	-104.55	00.00	0	5
938	JLY 27, 1990	9	17:00	0	0	0	33.12	-104.75	00.00	0	5
250	MAY 20, 1992	5	16:05	0	0	0	33.48	-104.47	00.00	0	5
266	MAY 23, 1992	9	19:15	0	0	0	33.38	-104.58	00.00	0	5
329	JUN 7, 1992	16	17:43	0	0	0	33.00	-104.88	00.00	0	5
385	MAY 20, 1994	3	16:25	0	0	0	33.38	-104.52	00.00	0	5
386	MAY 20, 1994	4	16:45	0	0	0	33.30	-104.52	00.00	0	5
618	DEC 2, 1997	11	16:25	0	0	0	33.12	-104.40	33.12	-104.40	5
405	MAY 25, 1999	3	15:26	0	0	0	33.28	-104.63	33.28	-104.63	5
408	JUN 2, 1999	6	16:54	0	0	0	33.83	-103.88	33.83	-103.88	5
305	SEP 13, 2002	3	14:36	0	0	0	33.98	-104.67	33.98	-104.67	5
735	APR 8, 2004	1	15:14	0	0	0	33.13	-104.82	33.13	-104.82	5
736	APR 8, 2004	2	15:41	0	0	0	33.18	-104.77	33.18	-104.77	5
737	APR 8, 2004	3	15:57	0	0	0	33.23	-104.68	33.23	-104.68	5
738	APR 8, 2004	4	16:20	0	0	1	33.27	-104.67	33.23	-104.52	5
739	APR 8, 2004	5	16:33	0	0	0	33.23	-104.52	33.23	-104.52	5
740	APR 8, 2004	6	16:42	0	0	0	33.25	-104.43	33.25	-104.43	5
620	OCT 5, 2004	11	15:44	0	0	0	33.38	-104.60	33.38	-104.60	5
87	MAY 30, 2005	6	20:25	0	0	0	33.02	-104.22	33.02	-104.22	5
807	AUG 14, 2006	2	10:59	0	0	0	33.17	-104.52	33.17	-104.52	5
1104	OCT 21, 2010	10	17:47	0	0	0	33.62	-104.64	33.65	-104.60	5
1105	OCT 21, 2010	11	18:03	0	0	0	33.66	-104.58	33.67	-104.57	5



Colfax County Tornadoes

ID	Date	Event Num	Time	Dead	Inj	F-Scale	Beg Coor	End Coor	County
----	------	-----------	------	------	-----	---------	----------	----------	--------

432	JUN 25, 1960	3	19:00	0	34	0	36.50	-104.90	00.00	0	7
334	MAY 29, 1964	2	13:03	1	8	3	36.53	-104.58	36.52	-104.53	7
181	MAY 16, 1969	7	12:00	0	0	0	36.30	-104.60	00.00		7
666	JULY 27, 1971	9	13:15	0	0	0	36.80	-104.05	00.00		7
404	JUN 1, 1977	6	14:45	0	1	?	36.40	-104.62	00.00		7
954	JULY 3, 1991	29	14:35	0	0	0	36.55	-104.53	00.00		7
938	AUG 17, 1992	24	19:00	0	0	1	36.47	-104.63	00.00		7
671	JULY 25, 1996	11	15:25	0	5	2	36.50	-104.92	36.52	-104.90	7
1060	OCT 11, 1997	7	16:30	0	0	0	36.42	-105.03	36.42	-105.03	7
1061	OCT 11, 1997	8	16:40	0	0	0	36.52	-104.72	36.52	-104.72	7
1062	OCT 11, 1997	9	17:50	0	0	0	36.78	-104.28	36.78	-104.28	7
1063	OCT 11, 1997	10	18:45	0	0	0	36.52	-104.50	36.52	-104.50	7
1370	JUN 4, 2003	1	13:29	0	0	0	36.65	-104.13	36.65	-104.13	7
264	JUN 16, 2004	7	13:55	0	0	0	36.90	-104.32	36.90	-104.32	7



Curry County Tornadoes

ID	Date	Event Num	Time	Dead	Inj	F-Scale	Beg Coor	End Coor	County
195	MAY 18, 1955	1	13:35	0	0	1	34.43 -103.62	00.00	0 9
428	MAY 24, 1957	6	5:00	0	0	2	34.43 -103.55	34.77 -103.05	9
150	MAY 13, 1958	1	19:35	0	0	0	34.60 -103.40	00.00	0 9
151	MAY 13, 1958	2	19:35	0	0	0	34.60 -103.40	00.00	0 9
152	MAY 13, 1958	3	19:35	0	0	0	34.60 -103.40	00.00	0 9
153	MAY 13, 1958	4	19:35	0	0	0	34.60 -103.40	00.00	0 9
388	JUN 22, 1959	11	18:00	0	0	1	34.82 -103.10	00.00	0 9
484	JLY 20, 1960	4	12:20	0	0	0	34.35 -103.68	00.00	0 9
370	JUN 10, 1964	3	17:30	0	1	1	34.40 -103.35	00.00	0 9
384	JUN 11, 1964	6	16:30	0	0	2	34.40 -103.13	34.38 -103.05	9, NM 9 to TX 369,
398	JUN 12, 1964	8	17:00	0	0	1	34.60 -103.10	34.78 -103.10	9
407	JUN 13, 1964	9	17:00	0	0	0	34.20 -103.50	00.00	0 9
77	MAR 23, 1967	1	17:00	0	0	0	34.40 -103.10	00.00	0 9
44	APR 16, 1969	2	13:15	0	0	1	34.47 -103.27	00.00	0 9
110	MAY 5, 1969	5	21:00	0	0	0	34.42 -103.57	00.00	0 9
148	APR 15, 1971	4	18:30	0	0	1	34.35 -103.13	00.00	0 9
505	JUN 11, 1971	7	17:00	0	0	1	34.80 -103.30	00.00	0 9
470	JLY 2, 1972	13	14:30	0	0	0	34.82 -103.22	00.00	0 9
539	JLY 20, 1972	17	19:25	0	0	0	34.60 -103.30	00.00	0 9
370	MAY 23, 1977	4	19:30	0	0	0	34.40 -103.38	00.00	0 9
371	MAY 23, 1977	5	19:30	0	0	0	34.40 -103.38	00.00	0 9
450	JUN 14, 1977	7	20:25	0	0	?	34.38 -103.05	00.00	0 9
184	APR 18, 1979	1	17:09	0	0	?	34.60 -103.12	00.00	0 9
167	APR 24, 1980	1	10:37	0	0	0	34.53 -103.30	34.53 -103.30	9
558	JUN 18, 1980	2	1:15	0	0	1	34.40 -103.13	00.00	0 9
63	MAR 18, 1982	1	21:30	0	0	0	34.47 -103.07	00.00	0 9
710	JLY 29, 1983	2	14:00	0	0	0	34.82 -103.22	00.00	0 9
229	MAY 30, 1988	4	21:00	0	0	0	34.32 -103.20	00.00	0 9
803	JUN 6, 1991	21	18:10	0	0	0	34.32 -103.30	00.00	0 9
114	APR 14, 1992	1	17:30	0	0	1	34.37 -103.68	34.68 -103.50	9
653	JUN 27, 1992	23	20:44	0	0	1	34.40 -103.20	00.00	0 9
604	JUN 25, 1993	2	17:15	0	0	0	34.42 -103.20	00.00	0 9
412	MAY 26, 1994	8	18:42	0	0	0	34.33 -103.27	00.00	0 9
668	JUN 10, 1996	9	17:46	0	0	0	34.38 -103.58	34.38 -103.58	9
1104	JUN 7, 1998	1	18:13	0	0	0	34.40 -103.47	34.40 -103.47	9
1105	JUN 7, 1998	2	18:18	0	0	0	34.42 -103.20	34.42 -103.20	9
656	OCT 30, 1998	7	18:03	0	0	0	34.52 -103.20	34.52 -103.20	9
972	JUN 28, 2000	1	11:20	0	0	0	34.82 -103.32	34.82 -103.32	9
973	JUN 28, 2000	2	11:40	0	0	0	34.75 -103.32	34.75 -103.32	9
165	JUN 16, 2002	1	21:00	0	0	0	34.43 -103.53	34.43 -103.53	9
1229	JUN 4, 2003	2	18:10	0	0	0	34.58 -103.62	34.58 -103.62	9
1230	JUN 4, 2003	3	18:25	0	0	0	34.48 -103.43	34.48 -103.43	9
1226	JUN 4, 2003	4	18:45	0	0	0	34.53 -103.48	34.53 -103.48	9
1227	JUN 4, 2003	5	19:59	0	0	0	34.47 -103.27	34.47 -103.27	9
478	MAY 25, 2010	9	15:55	0	0	0	34.48 -103.05	34.48 -103.05	9



De Baca County Tornadoes

ID	Date	Event Num	Time	Dead	Inj	F-Scale	Beg Coor	End Coor	County
117	MAR 5, 1971	1	10:00	0	0	0	34.55 -103.95	00.00	0 11
390	JUN 1, 1989	6	17:55	0	0	1	34.42 -104.65	34.43 -104.55	11
391	JUN 1, 1989	7	19:12	0	0	1	34.43 -104.78	34.43 -104.68	11
461	MAY 29, 1990	4	10:20	0	0	0	34.47 -104.03	00.00	0 11
350	MAY 24, 1993	1	18:11	0	0	0	34.47 -104.83	00.00	0 11

1030	SEP 2, 1993	3	21:20	0	0	1	34.62	-104.42	00.00	0	11
364	AUG 11, 2001	3	16:18	0	0	0	34.32	-104.23	34.32	-104.23	11
365	AUG 30, 2001	5	18:07	0	0	0	34.43	-104.55	34.43	-104.55	11
1435	AUG 17, 2008		19:40	0	0	0	34.49	-104.42	34.47	-104.39	11



Dona Ana County Tornadoes

ID	Date	Event Num	Time	Dead	Inj	F-Scale	Begin Coor		End Coor	County
470	JLY 29, 1959	16	23:00	0	0	1	32.07	-106.62	00.00	0 13
510	SEP 7, 1966	15	15:15	0	0	0	32.62	-106.75	00.00	0 13
659	SEP 19, 1972	18	17:20	0	0	0	31.88	-106.75	00.00	0 13
590	JLY 31, 1979	8	18:30	0	0	1	32.00	-106.60	00.00	0 13
480	JLY 22, 1987	12	18:30	0	0	0	32.75	-107.25	32.82	-107.18 13
536	SEP 22, 1988	8	16:35	0	0	0	32.12	-106.70	00.00	0 13
698	JLY 28, 1989	14	20:40	0	0	1	32.32	-107.25	32.32	-107.18 13
265	JUN 19, 2001	2	15:35	0	0	0	32.32	-106.75	32.32	-106.75 13
269	AUG 2, 2002	2	16:40	0	0	0	32.42	-106.45	32.42	-106.45 13
864	SEP 13, 2006	3	15:10	0	0	0	32.27	-106.85	32.27	-106.85 13
407	APR 29, 2007	11	14:05	0	0	0	32.32	-107.22	32.32	-107.22 13
423	MAY 2, 2007	12	12:48	0	0	0	32.20	-106.43	32.31	-106.37 13,35
331566	JLY 13, 2011	1	15:46	0	0	0	31.87	-106.76	31.87	-106.75 13



Eddy County Tornadoes

ID	Date	Event Num	Time	Dead	Inj	F-Scale	Begin Coor		End Coor	County
172	MAY 7, 1959	2	21:00	0	0	1	32.33	-104.20	00.00	0 15
448	JLY 11, 1959	14	21:00	0	0	0	32.72	-104.38	00.00	0 15
482	JLY 2, 1961	10	16:00	0	0	0	32.80	-104.40	00.00	0 15
391	JUN 9, 1962	6	16:00	0	0	0	32.13	-103.83	00.00	0 15
649	OCT 27, 1962	12	15:30	0	0	0	32.37	-104.20	00.00	0 15
219	MAY 30, 1963	2	16:00	0	0	0	32.80	-104.75	00.00	0 15
91	APR 4, 1965	1	12:45	0	0	1	32.90	-104.40	00.00	0 15
493	AUG 22, 1966	11	17:15	0	0	0	32.37	-104.27	00.00	0 15
494	AUG 22, 1966	12	17:18	0	0	0	32.37	-104.27	00.00	0 15
267	JUN 13, 1969	10	17:15	0	0	0	32.60	-104.58	00.00	0 15
241	MAY 27, 1970	10	16:00	0	0	0	32.53	-103.90	00.00	0 15
145	APR 15, 1971	3	15:45	0	0	1	32.18	-104.53	00.00	0 15
340	APR 30, 1976	1	19:30	0	2	2	32.57	-104.45	00.00	0 15
276	MAY 20, 1979	3	13:17	0	0	?	32.77	-104.40	00.00	0 15
567	JLY 5, 1981	6	2:00	0	0	1	32.42	-104.23	00.00	0 15
794	SEP 1, 1983	3	18:50	0	0	0	32.83	-104.40	00.00	0 15
478	JLY 25, 1985	4	10:25	0	0	0	32.85	-104.38	00.00	0 15
575	SEP 10, 1987	15	16:45	0	0	0	32.33	-104.45	00.00	0 15
210	MAY 11, 1989	1	16:55	0	0	1	32.03	-104.42	32.18	-104.35 15
533	JUN 10, 1989	10	18:00	0	0	1	32.83	-104.60	32.83	-104.43 15
881	JLY 12, 1990	5	13:48	0	0	0	32.57	-104.43	00.00	0 15
913	JLY 21, 1990	7	22:50	0	0	0	32.42	-104.32	00.00	0 15
968	AUG 14, 1990	12	22:15	0	0	0	33.15	-104.40	00.00	0 15
970	AUG 15, 1990	14	18:54	0	0	0	32.17	-104.67	00.00	0 15
972	AUG 15, 1990	15	20:15	0	0	0	32.17	-104.57	00.00	0 15
630	MAY 21, 1991	2	20:10	0	0	0	32.17	-104.27	00.00	0 15
631	MAY 21, 1991	3	20:36	0	0	0	32.17	-104.27	00.00	0 15
734	MAY 31, 1991	6	21:39	0	0	0	32.30	-104.10	00.00	0 15
735	MAY 31, 1991	7	21:42	0	21	2	32.30	-104.22	00.00	0 15
988	JLY 13, 1991	30	19:35	0	0	0	32.23	-104.07	00.00	0 15
211	MAY 15, 1992	3	16:55	0	0	0	32.75	-104.23	00.00	0 15
214	MAY 15, 1992	4	17:20	0	0	0	32.85	-104.40	00.00	0 15
271	MAY 24, 1992	10	18:25	0	0	0	32.83	-103.85	00.00	0 15
284	MAY 30, 1992	12	15:20	0	0	0	32.83	-104.63	00.00	0 15
294	JUN 1, 1992	13	16:10	0	0	0	32.97	-104.80	00.00	0 15
295	JUN 1, 1992	14	18:10	0	0	0	32.83	-104.38	00.00	0 15
333	JUN 7, 1992	17	21:10	0	6	2	32.42	-104.25	00.00	0 15
335	MAY 12, 1994	1	12:40	0	0	0	32.42	-103.85	00.00	0 15
336	MAY 12, 1994	2	12:55	0	0	0	32.83	-104.02	00.00	0 15
387	MAY 20, 1994	5	17:05	0	0	0	32.65	-104.62	00.00	0 15
388	MAY 20, 1994	6	17:25	0	0	0	32.78	-104.27	00.00	0 15
794	JLY 20, 1994	12	17:18	0	0	0	32.32	-104.23	00.00	0 15
826	JUN 29, 1995	6	17:15	0	0	0	32.05	-103.98	00.00	0 15
836	JLY 1, 1995	7	20:58	0	0	0	32.97	-104.55	00.00	0 15
837	JLY 1, 1995	8	21:19	0	0	0	32.93	-104.45	00.00	0 15
1089	AUG 8, 1996	15	14:12	0	0	0	32.53	-104.10	32.53	-104.10 15
383	MAY 22, 1997	5	16:46	0	0	0	32.67	-104.53	32.67	-104.53 15
379	MAY 29, 1999	2	17:42	0	0	0	32.57	-104.42	32.57	-104.42 15

765	MAY 6, 2005	3	19:18	0	0	0	32.32	-103.93	32.32	-103.93	15
766	MAY 6, 2005	4	19:26	0	0	0	32.30	-103.90	32.30	-103.90	15
577	MAY 30, 2006	1	17:00	0	0	0	32.22	-104.37	32.22	-104.37	15
138	MAR 23, 2007	10	20:00	0	0	0	32.57	-104.21	32.57	-104.21	15
973	SEP 26, 2007	23	14:34	0	0	0	32.56	-104.56	32.54	-104.48	15
359	APR 28, 2009		19:25	0	0	0	32.05	-104.23	32.06	-104.15	15



Grant County Tornadoes

ID	Date	Event Num	Time	Dead	Inj	F-Scale	Beg Coor	End Coor	County
746	OCT 12, 1957	15	5:00	0	0	3	32.63 -108.17	32.70 -108.05	17
510	JUN 15, 1967	4	14:20	0	0	1	32.78 -108.28	00.00	0 17
588	JLY 31, 1979	7	14:47	0	0	0	32.72 -108.15	00.00	0 17
654	AUG 19, 1979	13	11:00	0	0	1	32.77 -108.27	00.00	0 17
713	AUG 13, 1989	16	23:15	0	0	1	32.92 -108.32	00.00	0 17
947	SEP 6, 2007	22	13:45	0	0	0	32.65 -108.50	32.61 -108.46	17



Guadalupe County Tornadoes

ID	Date	Event Num	Time	Dead	Inj	F-Scale	Beg Coor	End Coor	County
342	JLY 8, 1956	3	17:30	0	0	0	35.00 -104.70	00.00	0 19
497	SEP 9, 1958	6	17:40	0	0	0	35.02 -104.68	00.00	0 19
174	MAY 8, 1959	3	12:00	0	0	1	35.00 -104.70	00.00	0 19
376	JUN 4, 1978	1	15:00	0	0	2	34.93 -104.90	00.00	0 19
651	AUG 16, 1979	12	16:00	0	0	0	34.93 -104.68	00.00	0 19
1037	JUN 28, 1999	7	20:15	0	0	0	35.08 -104.27	35.08 -104.27	19
1038	JUN 28, 1999	8	20:42	0	0	0	34.82 -105.20	34.82 -105.20	19
1433	AUG 17, 2008		18:48	0	0	0	34.83 -104.57	34.83 -104.56	19
1434	AUG 17, 2008		19:20	0	0	0	34.63 -104.46	34.62 -104.46	19
1552	SEP 11, 2008		17:48	0	0	0	34.61 -105.21	00.00	0 19



Harding County Tornadoes

ID	Date	Event Num	Time	Dead	Inj	F-Scale	Beg Coor	End Coor	County
161	MAY 17, 1962	5	19:00	0	1	2	35.97 -104.23	36.10 -104.13	21
252	MAY 14, 1977	3	1:30	0	2	3	35.85 -104.07	00.00	0 21
563	AUG 27, 1987	13	11:45	0	0	0	36.13 -103.98	00.00	0 21
618	JUN 2, 1995	3	16:45	0	0	0	35.83 -103.45	00.00	0 21
667	JUN 3, 1996	8	14:50	0	0	0	35.92 -103.45	35.88 -103.45	21
86	MAY 30, 2005	5	18:53	0	0	0	35.47 -103.58	35.45 -103.58	21
1073	AUG 18, 2009		16:09	0	0	0	36.09 -104.20	36.09 -104.20	21



Hidalgo County Tornadoes

ID	Date	Event Num	Time	Dead	Inj	F-Scale	Beg Coor	End Coor	County
444	JUN 15, 1961	9	20:00	0	0	1	32.00 -108.80	00.00	0 23
495	OCT 15, 2005	7	13:30	0	0	0	31.88 -108.80	31.88 -108.80	23



Lea County Tornadoes

ID	Date	Event Num	Time	Dead	Inj	F-Scale	Mag Coor	End Coor	County
241	MAY 16, 1954	1	15:00	0	0	1	32.97 -103.57	00.00	0 25
242	MAY 16, 1954	2	17:30	0	0	0	32.20 -103.20	00.00	0 25
245	MAY 17, 1954	4	20:00	0	0	3	32.97 -103.37	00.00	0 25
246	MAY 17, 1954	5	21:00	0	0	1	32.17 -103.23	32.22	-103.20 25
234	MAY 29, 1956	2	21:00	0	0	0	33.00 -103.40	00.00	0 25
498	MAY 30, 1957	11	17:39	0	0	0	32.43 -103.15	00.00	0 25
499	MAY 30, 1957	12	20:00	0	0	0	32.43 -103.18	00.00	0 25
500	MAY 30, 1957	13	20:39	0	0	0	32.43 -103.15	00.00	0 25
88	APR 7, 1959	1	15:30	0	0	1	32.73 -103.10	00.00	0 25
112	APR 26, 1960	1	15:00	0	0	0	32.70 -103.10	00.00	0 25
490	JLY 24, 1960	5	15:00	0	0	2	32.97 -103.40	00.00	0 25
364	MAY 30, 1961	2	21:00	0	0	1	32.90 -103.40	00.00	0 25
417	JUN 7, 1961	7	17:00	0	0	0	32.95 -103.18	00.00	0 25
559	JLY 27, 1962	9	17:57	0	0	0	32.70 -103.13	00.00	0 25
263	JUN 8, 1963	3	7:00	0	0	0	32.60 -103.10	00.00	0 25
402	AUG 31, 1963	8	19:15	0	0	1	32.95 -103.35	00.00	0 25
133	MAY 10, 1966	1	16:30	0	0	0	32.10 -103.20	00.00	0 25
216	MAY 26, 1966	4	20:00	0	0	0	33.25 -103.40	00.00	0 25
217	MAY 26, 1966	5	20:00	0	0	0	33.25 -103.67	00.00	0 25
459	AUG 7, 1966	10	19:00	0	0	1	33.27 -103.52	00.00	0 25
170	MAY 10, 1968	1	16:00	0	0	0	33.00 -103.40	00.00	0 25
27	APR 10, 1969	1	20:35	0	2	1	31.98 -103.33	32.12	-103.20 25, NM 25 to TX 301,
75	APR 17, 1970	3	18:30	0	0	1	33.10 -103.48	33.18	-103.42 25
76	APR 17, 1970	4	18:30	0	0	1	33.20 -103.32	00.00	0 25
83	APR 18, 1970	6	16:00	0	0	0	33.50 -103.10	00.00	0 25
234	MAY 25, 1970	7	10:45	0	0	0	33.40 -103.70	00.00	0 25
240	MAY 27, 1970	9	13:30	0	0	1	32.85 -103.60	00.00	0 25
518	JUN 14, 1971	8	16:00	0	0	1	32.95 -103.38	00.00	0 25
383	JUN 14, 1972	9	22:00	0	0	2	33.10 -103.22	00.00	0 25
155	APR 18, 1973	1	15:30	0	0	1	32.97 -103.37	00.00	0 25
740	JLY 23, 1975	3	21:22	0	0	0	32.70 -103.22	00.00	0 25
158	APR 19, 1977	1	16:00	0	0	1	32.92 -103.08	32.93	-103.00 25
750	SEP 13, 1977	8	19:15	0	0	0	32.95 -103.40	00.00	0 25
748	OCT 10, 1978	3	18:53	0	0	1	32.78 -103.13	00.00	0 25
554	JLY 24, 1979	6	20:00	0	0	0	32.93 -103.53	00.00	0 25
598	AUG 2, 1979	10	17:00	0	0	0	33.25 -103.32	00.00	0 25
499	MAY 27, 1982	3	17:13	0	0	2	32.70 -103.13	00.00	0 25
614	JUN 10, 1982	4	18:08	0	0	0	32.80 -103.25	00.00	0 25
437	MAY 30, 1983	1	21:00	0	0	0	32.43 -103.15	00.00	0 25
264	MAY 19, 1985	1	16:20	0	0	0	32.77 -103.13	00.00	0 25
380	JUN 5, 1985	2	16:00	0	0	0	32.68 -103.22	00.00	0 25
475	JLY 24, 1985	3	16:30	0	0	0	32.70 -103.13	00.00	0 25
501	JLY 1, 1986	1	22:15	0	0	0	32.70 -103.15	00.00	0 25
131	MAY 23, 1987	3	13:05	0	0	0	32.12 -103.18	00.00	0 25
150	MAY 25, 1987	4	19:53	0	0	0	32.40 -103.48	00.00	0 25
152	MAY 25, 1987	5	20:06	0	0	0	32.43 -103.43	00.00	0 25
154	MAY 25, 1987	6	20:17	0	0	0	32.62 -103.47	00.00	0 25
162	MAY 26, 1987	7	16:23	0	0	0	32.02 -103.18	00.00	0 25
201	MAY 30, 1987	8	20:12	0	0	0	32.42 -103.15	00.00	0 25
69	APR 16, 1988	1	15:48	0	0	1	32.23 -103.32	00.00	0 25
199	MAY 20, 1988	2	15:49	0	1	0	32.70 -103.13	00.00	0 25
200	MAY 20, 1988	3	16:06	0	0	0	32.93 -103.33	00.00	0 25
216	MAY 11, 1989	2	21:06	0	0	1	32.12 -103.17	32.12	-103.07 25
534	JUN 10, 1989	11	19:02	0	0	0	33.13 -103.18	33.18	-103.13 25
704	AUG 2, 1989	15	18:48	0	0	1	32.70 -103.07	00.00	0 25
777	JUN 5, 1991	8	16:58	0	0	0	32.82 -103.27	00.00	0 25
778	JUN 5, 1991	9	17:00	0	0	0	32.83 -103.77	00.00	0 25
779	JUN 5, 1991	10	17:07	0	0	0	32.93 -103.52	00.00	0 25
780	JUN 5, 1991	11	17:09	0	0	0	32.70 -103.38	00.00	0 25
781	JUN 5, 1991	12	17:10	0	0	0	32.93 -103.42	00.00	0 25
782	JUN 5, 1991	13	17:23	0	0	0	32.95 -103.32	00.00	0 25
783	JUN 5, 1991	14	17:35	0	0	0	32.70 -103.25	00.00	0 25
800	JUN 6, 1991	19	17:44	0	0	0	32.70 -103.12	00.00	0 25
801	JUN 6, 1991	20	17:45	0	0	0	32.70 -103.43	00.00	0 25
804	JUN 6, 1991	22	18:15	0	0	2	32.60 -103.13	32.60	-103.05 25
805	JUN 6, 1991	23	18:15	0	0	2	32.70 -103.37	32.63	-103.07 25
806	JUN 6, 1991	24	18:15	0	5	2	32.63 -103.20	32.63	-103.07 25
807	JUN 6, 1991	25	18:15	0	0	2	32.63 -103.20	32.63	-103.07 25
811	JUN 6, 1991	26	18:38	0	0	0	32.87 -103.13	00.00	0 25
1035	AUG 10, 1991	31	13:35	0	0	0	32.82 -103.13	00.00	0 25
203	MAY 13, 1992	2	15:56	0	0	0	32.62 -103.03	00.00	0 25
256	MAY 22, 1992	6	13:15	0	0	0	32.78 -103.42	00.00	0 25
258	MAY 22, 1992	7	14:19	0	0	0	32.78 -103.22	00.00	0 25
259	MAY 22, 1992	8	14:36	0	0	0	33.57 -103.33	00.00	0 25
272	MAY 24, 1992	11	20:35	0	0	0	32.43 -103.27	00.00	0 25
296	JUN 1, 1992	15	18:45	0	0	0	32.43 -103.28	00.00	0 25
411	MAY 26, 1994	7	18:20	0	0	0	32.70 -103.27	00.00	0 25
963	SEP 7, 1994	13	21:20	0	0	0	32.12 -103.58	00.00	0 25
549	MAY 26, 1995	1	15:51	0	0	1	32.85 -103.55	00.00	0 25
805	JUN 25, 1995	5	21:20	0	0	0	32.87 -103.75	00.00	0 25
1021	AUG 14, 1995	9	16:40	0	0	0	32.72 -103.17	00.00	0 25
1078	JUN 2, 1996	5	20:13	0	0	0	33.47 -103.33	33.47	-103.33 25
380	MAY 6, 1997	1	19:09	0	0	1	32.80 -103.18	32.78	-103.18 25

382	MAY 8, 1997	4	19:00	0	0	0	33.28	-103.32	33.25	-103.32	25
384	MAY 28, 1997	6	19:55	0	0	0	32.70	-103.20	32.70	-103.20	25
455	OCT 27, 1998	6	17:08	0	0	0	32.37	-103.33	32.37	-103.33	25
320	APR 30, 1999	1	14:28	0	0	0	32.45	-103.13	32.45	-103.13	25
128	MAR 23, 2007	2	16:32	0	0	0	32.86	-103.54	32.87	-103.51	25
129	MAR 23, 2007	3	17:07	0	0	2	33.13	-103.45	33.25	-103.43	25
130	MAR 23, 2007	4	17:36	0	0	0	33.40	-103.33	33.41	-103.33	25
131	MAR 23, 2007	5	17:45	0	0	0	33.49	-103.37	33.49	-103.37	25



Lincoln County Tornadoes

ID	Date	Event Num	Time	Dead	Inj	F-Scale	Beg Coor	End Coor	County	
489	MAY 30, 1957	10	15:00	0	0	0	34.17	-105.50	00.00	0 27
144	MAY 16, 1962	1	11:00	0	0	0	34.20	-105.00	00.00	0 27
305	MAY 18, 1964	1	16:15	0	0	1	34.30	-104.93	00.00	0 27
373	JUN 10, 1964	4	19:00	0	0	1	34.30	-104.90	00.00	0 27
774	SEP 17, 1971	12	16:00	0	0	1	33.82	-105.82	00.00	0 27
390	JUN 17, 1972	11	14:00	0	0	1	33.42	-105.67	33.47	-105.58 27
100	MAY 16, 1987	2	12:55	0	0	1	33.55	-105.45	00.00	0 27
389	JUN 1, 1989	5	18:50	0	0	1	34.30	-105.12	34.27	-105.03 27
739	JULY 9, 1994	10	15:40	0	0	0	33.65	-105.98	00.00	0 27
697	JUN 4, 2007	17	17:00	0	0	0	33.68	-105.42	33.68	-105.42 27
948	MAY 28, 2008		16:45	0	0	0	33.39	-105.06	33.39	-105.06 27
339	MAY 14, 2010	1	10:50	0	0	0	33.37	-105.55	33.37	-105.55 27



Luna County Tornadoes

ID	Date	Event Num	Time	Dead	Inj	F-Scale	Beg Coor	End Coor	County	
692	AUG 9, 1971	10	18:56	0	0	1	32.17	-107.77	00.00	0 29
724	JULY 18, 1975	2	17:15	0	0	0	31.92	-107.52	00.00	0 29
952	OCT 9, 2006	4	17:20	0	0	1	32.22	-107.61	32.23	-107.62 29



Mora County Tornadoes

ID	Date	Event Num	Time	Dead	Inj	F-Scale	Beg Coor	End Coor	County	
574	JUN 17, 1965	9	17:30	0	0	0	35.90	-105.30	00.00	0 33
251	JUN 8, 1969	9	14:30	0	0	0	36.00	-104.70	00.00	0 33
796	JULY 21, 1973	2	15:00	0	0	1	36.00	-105.17	00.00	0 33
926	JULY 23, 1990	8	16:30	0	0	0	36.18	-104.70	00.00	0 33
964	AUG 14, 1990	10	17:25	0	0	0	35.90	-104.85	00.00	0 33
669	JULY 30, 1996	13	14:25	0	0	0	36.07	-105.12	36.07	-105.12 33
687	JUN 3, 2007	14	14:30	0	0	0	36.13	-105.11	36.13	-105.11 33



Otero County Tornadoes

ID	Date	Event Num	Time	Dead	Inj	F-Scale	Beg Coor	End Coor	County	
345	JUN 3, 1959	9	16:50	0	0	1	32.98	-106.00	00.00	0 35
346	JUN 3, 1959	10	17:00	0	0	1	33.30	-106.08	00.00	0 35
530	JULY 19, 1972	16	19:45	0	0	0	32.02	-106.32	32.02	-106.27 35

597	AUG 2, 1979	9	16:04	0	0	0	32.85	-106.10	00.00	0	35
657	AUG 2, 1981	7	22:00	0	0	0	32.42	-106.33	00.00	0	35
669	AUG 5, 1981	8	12:15	0	0	0	32.83	-105.42	00.00	0	35
496	MAY 27, 1982	2	16:15	0	0	2	32.90	-105.97	00.00	0	35
312	JUN 27, 1987	10	0:05	0	0	0	32.85	-106.10	00.00	0	35
692	JLY 22, 1989	13	16:05	0	0	1	32.90	-106.00	00.00	0	35
206	APR 4, 1991	1	14:30	0	0	1	33.07	-106.02	00.00	0	35
413	JUN 5, 2003	7	17:45	0	0	0	33.30	-105.58	33.30	-105.58	35
958	OCT 15, 2006	5	14:47	0	0	0	32.52	-105.90	32.60	-105.97	35
425	MAY 2, 2007	13	13:45	0	0	0	32.59	-106.25	32.59	-106.24	35
779	JUN 25, 2007	21	14:47	0	0	0	32.92	-105.72	32.92	-105.72	35



Quay County Tornadoes

ID	Date	Event Num	Time	Dead	Inj	F-Scale	Beg Coor	End Coor	County
161	JLY 11, 1950	1	17:00	0	0	1	35.28 -103.52	35.33 -103.48	37
475	MAY 27, 1957	7	18:30	0	0	0	35.00 -103.73	00.00	0 37
454	JLY 14, 1959	15	18:00	0	0	1	35.20 -103.57	00.00	0 37
348	MAY 23, 1961	1	19:30	0	0	1	34.90 -103.60	00.00	0 37
381	JUN 3, 1961	3	17:30	0	1	2	35.20 -103.50	35.15 -103.47	37
334	JLY 12, 1963	6	14:00	0	0	2	35.30 -103.70	00.00	0 37
379	JUN 10, 1964	5	22:00	0	0	1	35.10 -103.35	00.00	0 37
381	JUN 11, 1964	7	13:20	0	0	2	35.18 -103.05	00.00	0 37
566	JUN 15, 1965	7	16:00	0	0	1	34.80 -103.50	34.82 -103.43	37
602	JUN 25, 1965	11	16:00	0	0	0	35.22 -103.65	00.00	0 37
304	JUN 18, 1966	7	18:00	0	0	1	34.97 -104.03	00.00	0 37
50	MAR 30, 1970	2	17:53	0	0	1	35.10 -103.63	00.00	0 37
77	APR 17, 1970	5	20:00	0	0	2	34.70 -103.90	35.00 -103.30	37
159	APR 18, 1971	5	21:30	0	0	1	35.13 -103.32	00.00	0 37
503	JUN 11, 1971	6	16:00	0	0	1	34.35 -103.20	00.00	0 37
478	JLY 3, 1972	14	12:00	0	0	1	34.70 -104.02	00.00	0 37
520	JLY 17, 1972	15	18:40	0	1	1	35.35 -103.45	35.35 -103.38	37
461	MAY 24, 1974	3	17:21	0	0	0	35.17 -103.73	00.00	0 37
650	AUG 15, 1979	11	16:23	0	0	0	35.17 -103.73	00.00	0 37
151	MAY 6, 1981	1	18:30	0	0	0	35.22 -103.78	00.00	0 37
554	JUN 30, 1981	5	18:35	0	0	0	35.17 -103.73	00.00	0 37
306	JUN 24, 1987	9	18:40	0	0	0	35.60 -103.30	00.00	0 37
267	JUN 13, 1988	6	21:25	0	0	0	34.82 -103.75	00.00	0 37
240	MAY 15, 1989	3	15:35	0	0	1	34.62 -103.77	34.80 -103.57	37
590	JUN 20, 1992	20	22:03	0	0	0	34.88 -103.32	00.00	0 37
647	JUN 27, 1992	22	18:30	0	1	1	35.13 -103.33	34.10 -103.25	37
666	JUN 28, 1994	9	21:15	0	0	0	35.07 -103.33	00.00	0 37
750	JLY 13, 1994	11	19:35	0	0	0	35.10 -103.37	00.00	0 37
616	JUN 2, 1995	2	16:23	0	0	0	35.18 -103.05	00.00	0 37
621	JUN 2, 1995	4	17:20	0	0	1	35.65 -103.05	35.67 -103.02	37, NM 37 to TX 205,
349	MAY 30, 1996	3	19:02	0	0	0	35.37 -103.63	35.37 -103.63	37
650	AUG 4, 1998	4	19:29	0	0	0	34.10 -103.33	34.10 -103.33	37
407	MAY 25, 1999	5	17:17	0	0	0	35.52 -103.23	35.52 -103.23	37
122	MAY 30, 2001	1	15:25	0	0	0	34.82 -103.73	34.82 -103.73	37
415	AUG 14, 2004	9	19:32	0	0	0	34.15 -103.27	34.15 -103.27	37
126	MAR 23, 2007	1	15:12	0	12	1	35.34 -103.42	35.38 -103.41	37
1324	JLY 9, 2008		14:13	0	0	0	35.16 -103.65	35.17 -103.64	37



Rio Arriba County Tornadoes

ID	Date	Event Num	Time	Dead	Inj	F-Scale	Beg Coor	End Coor	County
651	SEP 29, 1998	5	16:20	0	0	0	36.58 -106.52	36.58 -106.52	39



Roosevelt County Tornadoes

ID	Date	Event Num	Time	Dead	Inj	F-Scale	Beg Coor	End Coor	County
----	------	-----------	------	------	-----	---------	----------	----------	--------

486	AUG 24, 1954	8	21:00	0	0	0	33.95	-103.65	00.00	0	41
187	APR 21, 1957	1	16:00	0	0	2	33.90	-103.10	00.00	0	41
188	APR 21, 1957	2	16:00	0	0	0	33.90	-103.10	00.00	0	41
189	APR 21, 1957	3	16:00	0	0	0	33.90	-103.10	00.00	0	41
190	APR 21, 1957	4	16:00	0	0	0	33.90	-103.10	00.00	0	41
175	MAY 8, 1959	4	15:15	0	0	1	34.10	-103.10	34.13	-103.02	41
433	JULY 8, 1959	12	18:00	0	0	1	34.18	-103.45	00.00	0	41
408	JUN 6, 1961	5	16:30	0	0	0	34.10	-103.50	00.00	0	41
147	MAY 16, 1962	2	16:00	0	0	0	34.43	-103.90	00.00	0	41
331	JULY 11, 1963	5	16:00	0	0	1	34.00	-103.25	00.00	0	41
408	JUN 13, 1964	10	17:00	0	0	1	34.18	-103.30	00.00	0	41
568	JUN 15, 1965	8	23:00	0	0	1	33.90	-103.20	00.00	0	41
605	JUN 25, 1965	12	18:10	0	0	2	33.98	-103.23	33.98	-103.05	41
215	MAY 26, 1966	3	19:00	0	0	0	34.22	-103.68	00.00	0	41
305	JUN 18, 1966	8	22:00	0	0	1	34.23	-103.50	00.00	0	41
490	JUN 14, 1967	3	19:40	0	0	0	34.10	-103.17	00.00	0	41
551	JUN 28, 1967	5	17:45	0	0	1	34.20	-103.33	00.00	0	41
92	MAY 4, 1969	3	1:01	0	2	0	34.58	-103.80	00.00	0	41
108	MAY 5, 1969	4	19:00	0	0	0	34.20	-103.30	00.00	0	41
117	MAY 6, 1969	6	15:00	0	0	0	34.60	-103.60	00.00	0	41
231	MAY 7, 1972	1	19:58	0	0	2	34.27	-103.33	00.00	0	41
380	JUN 14, 1972	8	17:12	0	0	0	34.22	-103.37	00.00	0	41
358	MAY 4, 1974	1	15:23	0	0	0	34.20	-103.32	00.00	0	41
437	MAY 17, 1974	2	19:35	0	0	0	34.18	-103.30	00.00	0	41
563	JULY 5, 1978	2	17:30	0	0	0	34.17	-103.43	00.00	0	41
521	JULY 15, 1979	5	18:30	0	0	0	34.22	-103.58	00.00	0	41
515	JUN 22, 1981	2	22:00	0	0	1	34.18	-103.33	00.00	0	41
627	JUN 11, 1982	5	19:15	0	0	0	34.18	-103.33	00.00	0	41
566	AUG 30, 1987	14	14:10	0	0	0	33.83	-103.77	00.00	0	41
235	MAY 30, 1988	5	23:14	0	0	0	33.90	-103.67	00.00	0	41
249	MAY 16, 1989	4	11:10	0	0	0	34.57	-103.90	34.70	-103.73	41, 37
638	JUN 29, 1989	12	21:46	0	0	0	34.23	-103.38	00.00	0	41
799	JUN 6, 1991	18	17:23	0	0	0	34.12	-103.40	00.00	0	41
361	JUN 12, 1992	18	18:30	0	0	0	33.90	-103.17	00.00	0	41
362	JUN 12, 1992	19	19:00	0	0	0	33.78	-103.33	00.00	0	41
664	JUN 2, 1996	4	19:23	0	0	0	33.63	-103.20	33.57	-103.15	41
743	MAY 8, 1997	2	18:02	0	0	0	34.07	-103.48	34.07	-103.48	41
744	MAY 8, 1997	3	18:25	0	0	0	33.98	-103.58	34.00	-103.58	41
378	JULY 3, 2000	3	17:30	0	0	0	33.93	-103.65	33.93	-103.65	41
1228	JUN 4, 2003	6	20:20	0	0	0	34.18	-103.33	34.18	-103.33	41
132	MAR 23, 2007	6	18:05	0	0	0	33.64	-103.35	33.63	-103.34	41
134	MAR 23, 2007	7	19:24	0	0	0	34.14	-103.14	34.15	-103.15	41
135	MAR 23, 2007	8	19:28	0	0	0	33.98	-103.23	33.98	-103.23	41
136	MAR 23, 2007	9	19:30	2	33	2	34.24	-103.17	34.42	-103.19	41, 9
692	JUN 3, 2007	15	17:18	0	0	0	33.97	-103.67	33.97	-103.67	41
694	JUN 3, 2007	16	17:43	0	0	0	33.85	-103.42	33.85	-103.42	41
470	MAY 25, 2010	8	15:13	0	0	0	34.27	-103.20	34.27	-103.20	41
376837	JUN 12, 2012		21:07	0	0	1	34.24	-103.53	34.23	-103.52	41
376838	JUN 12, 2012		22:07	0	0	0	33.96	-103.34	33.94	-103.33	41



Sandoval County Tornadoes

ID	Date	Event Num	Time	Dead	Inj	F-Scale	Beg Coord	End Coord	County
498	AUG 30, 1966	13	16:00	0	0	1	36.80 -107.60	00.00	0 43
476	SEP 13, 1988	7	16:30	0	0	1	35.28 -106.58	00.00	0 43
628	MAY 20, 1991	5	19:30	0	0	0	35.25 -106.68	00.00	0 43
406	MAY 25, 1999	4	14:19	0	0	0	36.02 -107.05	36.02 -107.05	43
715	JUN 9, 2007	18	15:33	0	0	0	35.47 -106.32	35.48 -106.25	43



San Juan County Tornadoes

ID	Date	Event Num	Time	Dead	Inj	F-Scale	Beg Coord	End Coord	County
293	MAY 10, 1957	5	19:20	1	0	2	36.68 -108.22	00.00	0 45
212	MAY 28, 1963	1	16:00	0	0	0	36.72 -108.00	00.00	0 45
359	JUN 18, 1968	2	20:45	0	3	2	34.35 -103.45	00.00	0 45
1044	SEP 28, 1990	16	16:50	0	0	0	36.73 -108.20	00.00	0 45
638	OCT 23, 2000	4	12:36	0	0	0	36.92 -108.18	36.92 -108.18	45
639	OCT 23, 2000	5	12:51	0	0	0	36.92 -108.18	36.92 -108.18	45



San Miguel County Tornadoes

ID	Date	Event Num	Time	Dead	Inj	F-Scale	Beg Coor	End Coor	County
758	OCT 20, 1957	17	14:30	0	0	0	35.33 -107.20	00.00	0 47
273	MAY 23, 1959	8	17:38	0	0	0	35.30 -106.60	00.00	0 47
613	AUG 31, 1962	10	1:25	0	0	?	35.35 -105.58	00.00	0 47
614	AUG 31, 1962	11	2:25	0	0	?	35.47 -105.50	00.00	0 47
303	JUN 18, 1966	6	15:30	0	0	1	35.53 -104.70	00.00	0 47
505	JUN 3, 1974	4	17:30	0	0	1	35.87 -104.18	00.00	0 47
527	JUN 23, 1981	3	18:30	0	0	1	35.27 -105.32	00.00	0 47
639	JUN 13, 1982	6	17:00	0	0	1	35.60 -105.22	00.00	0 47
965	AUG 14, 1990	11	18:45	0	0	0	36.02 -105.15	00.00	0 47
640	JUN 27, 1992	21	14:30	0	0	2	35.68 -104.40	00.00	0 47
649	AUG 3, 1998	3	13:55	0	0	0	35.53 -105.13	35.53 -105.13	47
949	MAY 28, 2008		17:45	0	0	0	35.29 -105.18	35.29 -105.17	47
950	MAY 28, 2008		20:27	0	0	0	35.30 -103.73	35.30 -103.73	47



Santa Fe County Tornadoes

ID	Date	Event Num	Time	Dead	Inj	F-Scale	Beg Coor	End Coor	County
217	MAY 25, 1956	1	11:54	0	0	0	35.00 -106.30	35.18 -106.13	49
427	AUG 20, 1956	4	13:30	0	0	1	35.17 -106.20	00.00	0 49
486	MAY 30, 1957	8	13:20	0	0	0	35.20 -105.90	00.00	0 49
180	MAY 9, 1959	5	16:00	0	0	0	35.20 -106.00	00.00	0 49
181	MAY 9, 1959	6	16:00	0	0	0	35.20 -106.00	00.00	0 49
235	MAY 15, 1959	7	13:45	0	0	0	35.70 -106.00	00.00	0 49
572	SEP 30, 1960	6	17:30	0	0	0	35.20 -106.00	00.00	0 49
564	AUG 16, 1961	11	13:30	0	0	0	35.50 -105.90	00.00	0 49
213	MAY 26, 1966	2	15:18	0	0	0	35.00 -106.10	00.00	0 49
585	DEC 26, 1966	16	18:40	0	0	1	35.87 -106.00	00.00	0 49
144	APR 15, 1971	2	15:00	0	0	1	35.65 -105.98	00.00	0 49
385	JUN 15, 1972	10	16:28	0	0	0	35.38 -106.08	00.00	0 49
513	JUN 8, 1989	8	17:45	0	0	0	35.07 -106.20	00.00	0 49
514	JUN 8, 1989	9	18:12	0	0	1	35.08 -105.90	35.08 -105.78	49
969	AUG 15, 1990	13	18:14	0	0	0	35.40 -105.75	00.00	0 49
942	JUN 29, 1991	28	17:00	0	0	0	35.68 -105.95	00.00	0 49
716	JUN 9, 2007	19	15:45	0	0	0	35.47 -105.24	35.49 -105.21	49
717	JUN 9, 2007	20	16:10	0	0	0	35.46 -105.17	35.46 -105.17	49
1431	AUG 17, 2008		16:40	0	0	0	35.58 -105.84	35.58 -105.83	49
1626	OCT 11, 2008		18:33	0	0	0	35.15 -105.94	00.00	0 49
903	JLY 18, 2009		21:02	0	0	0	35.20 -106.18	35.19 -106.17	49
386045	JLY 24, 2012		15:57	0	0	0	35.62 -106.04	35.62 -106.04	49
410374	OCT 12, 2012		17:08	0	0	0	35.63 -105.67	35.67 -105.58	49



Sierra County Tornadoes

ID	Date	Event Num	Time	Dead	Inj	F-Scale	Beg Coor	End Coor	County
159	MAY 16, 1958	5	15:00	0	0	0	33.10 -107.30	00.00	0 51
370	JUN 11, 1960	2	15:00	0	0	0	33.00 -107.10	00.00	0 51
459	JLY 24, 1970	11	22:00	0	0	0	33.27 -106.38	00.00	0 51
771	SEP 16, 1971	11	20:00	0	0	1	32.93 -107.65	00.00	0 51
710	JUN 20, 1982	7	14:00	0	0	0	33.13 -107.25	00.00	0 51



Socorro County Tornadoes

ID	Date	Event Num	Time	Dead	Inj	F-Scale	Beg Coor	End Coor	County
176	AUG 2, 1950	2	12:30	0	0	1	34.12 -107.23	34.02 -107.30	53
244	MAY 17, 1954	3	16:00	0	0	0	33.80 -106.60	00.00	0 53
719	AUG 2, 1965	13	14:00	0	0	0	34.00 -107.40	00.00	0 53
68	APR 17, 2005	2	14:33	0	0	0	34.37 -107.00	34.37 -107.00	53
371125	MAY 13, 2012		13:49	0	0	1	34.09 -107.28	34.09 -107.26	53
390985	JLY 5, 2012		15:36	0	0	0	34.03 -106.87	34.03 -106.87	53



Taos County Tornadoes

ID	Date	Event Num	Time	Dead	Inj	F-Scale	Beg Coor	End Coor	County
884	JLY 13, 2009		17:20	0	0	0	36.62 -105.97	36.62 -105.97	55



Torrance County Tornadoes

ID	Date	Event Num	Time	Dead	Inj	F-Scale	Beg Coor	End Coor	County
488	MAY 30, 1957	9	14:45	0	0	0	34.37 -105.70	00.00	0 57
514	OCT 13, 1958	7	13:45	0	0	0	34.40 -105.72	00.00	0 57
447	JLY 11, 1959	13	17:45	0	0	0	34.60 -106.00	00.00	0 57
481	MAY 30, 1965	2	11:00	0	0	0	35.00 -106.00	00.00	0 57
810	SEP 14, 1976	2	18:00	0	0	0	34.63 -106.22	34.68 -106.18	57
792	JUN 6, 1991	15	12:38	0	0	0	34.37 -105.70	00.00	0 57
793	JUN 6, 1991	16	13:10	0	0	0	34.58 -105.53	00.00	0 57
794	JUN 6, 1991	17	13:25	0	0	0	34.65 -105.45	00.00	0 57
836	JUN 10, 1991	27	18:56	0	0	0	34.57 -105.55	00.00	0 57
670	JLY 30, 1996	14	16:20	0	0	0	34.68 -105.45	34.68 -105.45	57



Union County Tornadoes

ID	Date	Event Num	Time	Dead	Inj	F-Scale	Beg Coor	End Coor	County
207	AUG 10, 1951	2	15:30	0	0	0	36.67 -103.95	36.78 -103.78	59
399	JUN 29, 1954	6	14:30	0	0	0	36.02 -103.20	36.07 -103.17	59
388	JUN 5, 1961	4	14:30	0	0	?	36.90 -103.50	36.95 -103.42	59
415	JUN 7, 1961	6	15:45	0	0	0	36.32 -103.93	00.00	0 59
157	MAY 17, 1962	3	16:30	0	0	1	36.42 -103.45	36.58 -103.27	59
158	MAY 17, 1962	4	16:30	0	0	0	36.52 -103.50	00.00	0 59
494	JUN 3, 1965	4	17:05	0	0	0	36.13 -103.20	00.00	0 59
811	SEP 18, 1965	14	19:00	0	0	2	36.40 -103.03	36.43 -103.12	59
577	JLY 3, 1967	6	15:30	0	0	0	36.55 -103.05	00.00	0 59
578	JLY 3, 1967	7	15:30	0	0	0	36.50 -103.08	00.00	0 59
579	JLY 3, 1967	8	15:30	0	0	0	36.68 -103.00	00.00	0 59
234	JUN 3, 1969	8	23:00	0	0	0	35.90 -103.20	00.00	0 59
242	MAY 10, 1972	2	15:00	0	0	0	35.77 -103.33	00.00	0 59
243	MAY 10, 1972	3	15:00	0	0	0	35.77 -103.33	00.00	0 59
244	MAY 10, 1972	4	15:00	0	0	0	35.77 -103.33	00.00	0 59
245	MAY 10, 1972	5	15:10	0	0	1	35.77 -103.33	35.78 -103.27	59
246	MAY 10, 1972	6	15:20	0	0	2	35.82 -103.07	00.00	0 59
162	APR 19, 1977	2	17:00	0	0	1	36.48 -103.15	00.00	0 59
272	MAY 15, 1979	2	15:30	0	0	?	36.72 -103.75	00.00	0 59
330	JUN 7, 1979	4	20:17	0	0	0	36.45 -103.18	00.00	0 59
700	JLY 5, 1984	1	15:50	0	0	0	36.60 -103.60	00.00	0 59
348	MAY 25, 1996	1	15:25	0	0	0	35.77 -103.33	35.77 -103.33	59
350	MAY 25, 1996	2	16:30	0	0	0	36.15 -103.13	36.15 -103.13	59
665	JUN 3, 1996	6	14:24	0	0	0	36.30 -103.37	36.28 -103.40	59
666	JUN 3, 1996	7	14:32	0	0	0	35.98 -103.23	35.98 -103.23	59
672	JLY 12, 1996	10	14:40	0	0	0	36.37 -103.88	36.37 -103.88	59

673	JLY 26, 1996	12	17:25	0	0	0	36.75	-104.00	36.75	-104.00	59
674	SEP 2, 1996	16	15:15	0	0	0	36.75	-103.60	36.75	-103.60	59
363	AUG 13, 2001	4	16:44	0	0	0	36.67	-104.10	36.67	-104.10	59
263	JUN 21, 2004	8	18:10	0	0	0	36.02	-103.33	36.02	-103.33	59
1257	JUN 19, 2008		15:13	0	0	0	36.37	-103.97	00.00		59
436	MAY 23, 2010	2	19:52	0	0	2	36.36	-103.15	36.56	-103.00	59, NM 59 to OK 25,
439	MAY 23, 2010	3	19:55	0	0	0	36.36	-103.15	36.39	-103.12	59
441	MAY 23, 2010	4	20:10	0	0	1	35.89	-103.19	35.96	-103.17	59
442	MAY 23, 2010	5	20:12	0	0	2	36.11	-103.17	36.23	-103.13	59
444	MAY 23, 2010	6	20:36	0	0	1	36.27	-103.13	36.33	-103.11	59
445	MAY 23, 2010	7	20:59	0	0	1	36.07	-103.13	36.20	-103.07	59



Valencia County Tornadoes

ID	Date	Event Num	Time	Dead	Inj	F-Scale	Begin Coord	End Coord	County
447	JLY 31, 1954	7	18:30	0	0	0	34.57 -106.77	34.52 -106.73	61
400	AUG 30, 1963	7	10:45	0	0	0	34.80 -106.80	00.00	61
359	JLY 5, 1966	9	19:30	0	0	1	34.70 -106.73	00.00	61
881	OCT 10, 1974	6	15:00	1	8	2	35.12 -107.17	00.00	61
457	MAY 27, 1975	1	13:15	0	0	2	34.67 -106.80	00.00	61
416	AUG 30, 2004	10	16:35	0	0	0	34.67 -106.80	34.67 -106.80	61



© 2015 The Tornado Project All rights reserved. All content, text, and graphics on this page is the property of The Tornado Project and may not be reproduced, electronically or otherwise without permission.

The Tornado Project PO Box 302 St Johnsbury, VT 05819 (802)748-2505



Customize Your Weather.gov

City, ST

Enter Your City, ST or ZIP Code

Remember Me

Get Weather

Privacy Policy

Severe Weather Climatology for New Mexico

Weather.gov > Albuquerque, NM > Severe Weather Climatology for New Mexico

Albuquerque, NM
Weather Forecast Office

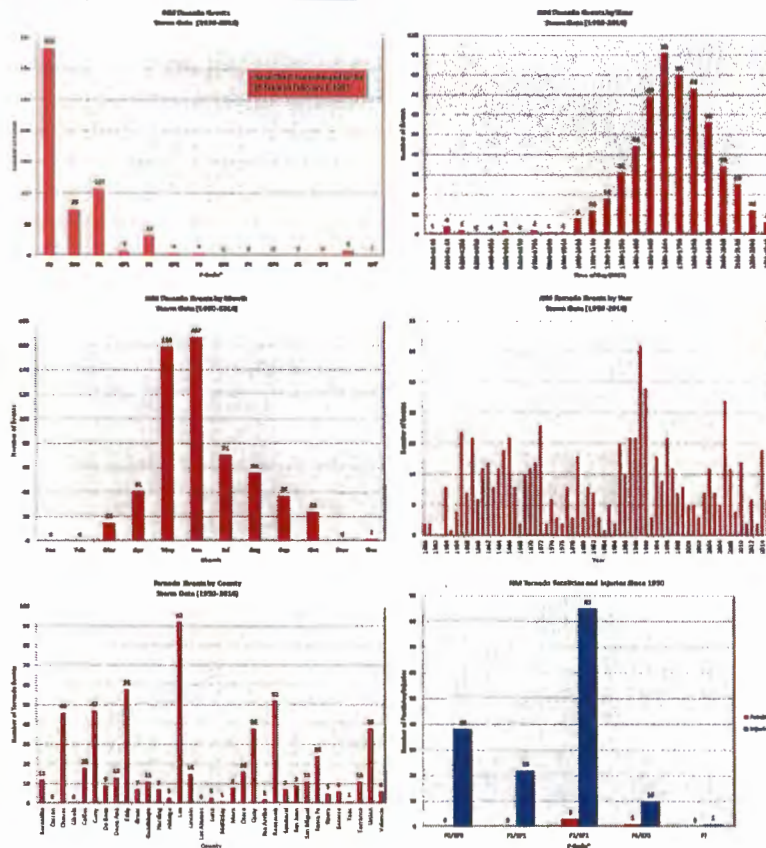
- Current Hazards
- Current Conditions
- Radar
- Forecasts
- Rivers and Lakes
- Climate and Past Weather
- Local Programs



New Mexico Severe Weather Climatology

Tornado Information

A complete historical tornado record dates back to 1950, though there are sparse reports of tornadoes prior. Interestingly, the number of tornado reports have not substantially increased during the 1980-2009 period over the 1950-1979 period despite increasing education and awareness. Many reasons could account for this, including a vast unpopulated area, and rare tornado occurrences across western New Mexico. For the 30-year period ending in 2009, an average of 10 tornadoes occurred in New Mexico each year, and most were across the eastern plains. However, there has been considerable year-to-year variability. Most New Mexico tornadoes are relatively weak, and occurred in the afternoon and evening hours in the spring months. However, tornadoes can occur at any time. The graphs below illustrate New Mexico's tornado history. Please note: F? and EF? indicate an unknown F-Scale or EF-Scale, respectively. Click on any image for a larger version. For more information on the change from the F-Scale to the EF-Scale, please visit the [EF-Scale webpage](#).



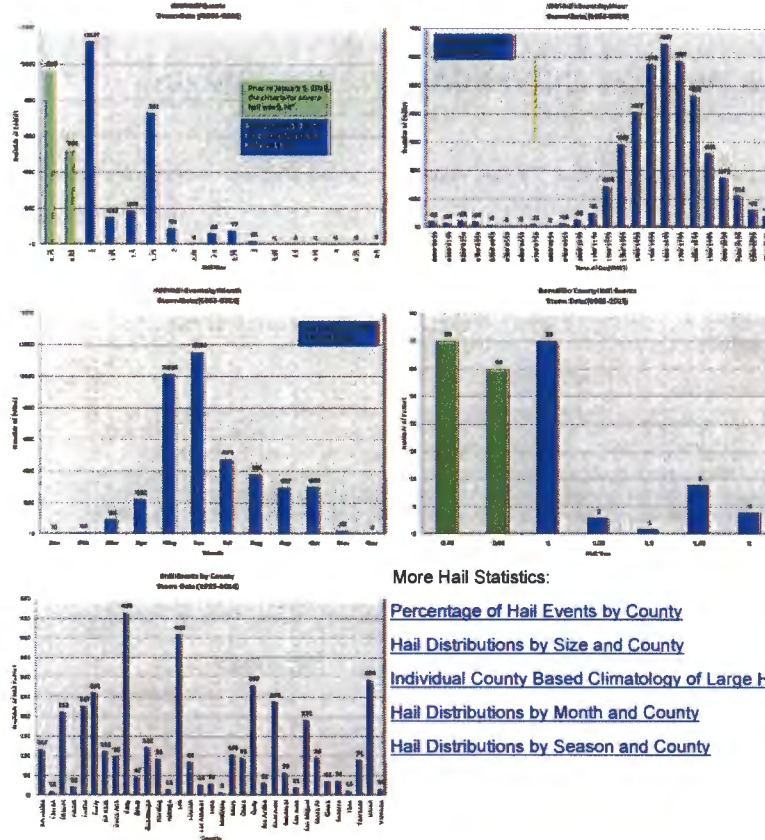
Top 10 Deadliest/Injurious NM Tornadoes Since 1950

Hail Information

Unlike tornadoes, the number of severe hail reports in New Mexico have greatly increased over the climatological 30-year period. Between 1955 and 1979, the average number of hail reports per year was 11, whereas, between 1980 and 2009, the average number of hail reports is 99. The jump in reports largely occurred after the WSR-88D was installed and forecasters could better narrow down an area to search for hail reports. For the 10-year period ending in 2016, the average number of severe hail reports per year has risen to near 165.

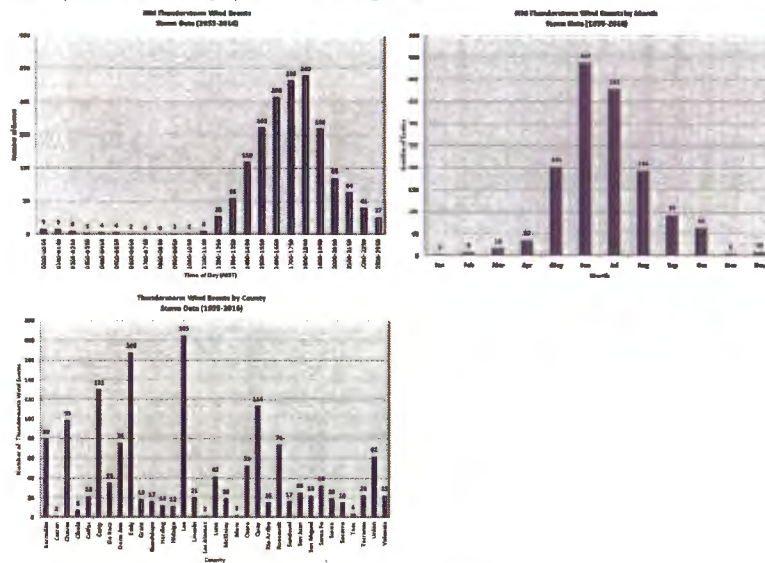
Prior to January 5, 2010, severe hail was categorized as anything 0.75" or greater, or roughly hail

the size of a penny or larger. For consistency, the graphs below include hail greater than or equal to 0.75" through 2016. Click on any graph for a larger version.



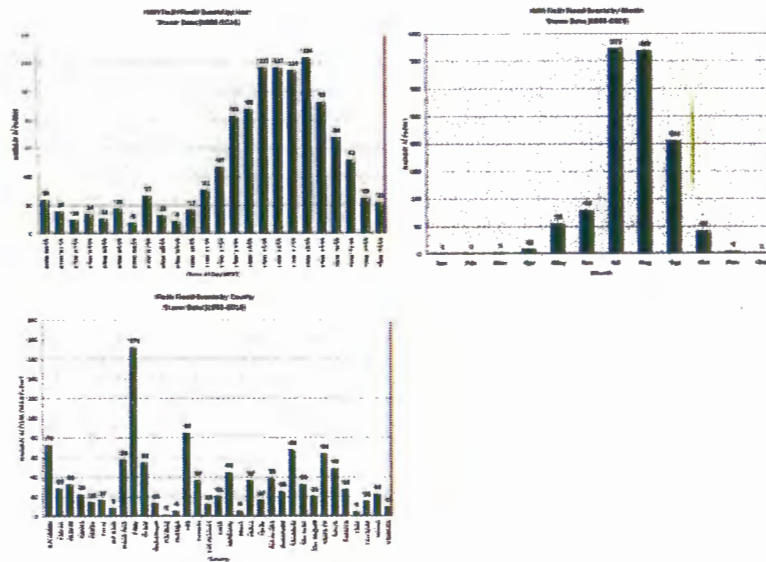
Severe Thunderstorm Wind Gust Information

Severe thunderstorm winds include gusts greater than or equal to 58 mph (or 50KT). Many of these gusts are estimated by trained spotters since anemometers are not installed everywhere that storms occur. Between 1979 and 2009, an average of 26 thunderstorm wind events were reported. However, for the 10 year period ending in 2016, an average of 64 thunderstorm wind events have been reported. Click on a graph below for a larger version.



Flash Flooding Information

Flash flooding is most common in the summer months during the monsoon. In fact, two-thirds of flash floods occur in the month of July and August alone. Flash flooding is very dangerous and deceptive because flash flooding can occur in areas where it didn't rain. Click on the graphs below for a larger version.



Fatalities/Injuries

Most weather related fatalities and injuries can be avoided if the proper precautions are taken. Next to lightning, injuries due to a tornado are most common, though 100 of those injuries occurred in only 4 events. In other words, there are many tornadoes that occur that cause no fatalities or injuries. However, in most of these cases the tornado occurs over open rangeland. In general, the chance of tornado injuries and fatalities increase as tornado strength increases (see above). Most fatalities occur with lightning, though flash flooding is a close 2nd. Lightning fatalities generally occur with the first or last strike in a storm, when people outside are unaware that a storm is approaching, or return to their outside activities before the storm has completely exited the area. Click on the graph below for more statistics.

