

**ATTACHMENT B1**

**WASTE CHARACTERIZATION SAMPLING METHODS**

(This page intentionally blank)



B1-2c <u>Equipment Testing, Inspection and Maintenance</u> .....	<a href="#">B1-22</a>
B1-2d <u>Equipment Calibration and Frequency</u> .....	<a href="#">B1-23</a>
B1-3 <u>Radiography</u> .....	<a href="#">B1-23</a>
B1- <del>3b(3)</del> 4 <u>Visual Examination</u> .....	<a href="#">B1-27</a>
B1-45 <u>Custody of Samples</u> .....	<a href="#">B1-29</a>
B1-56 <u>Sample Packing and Shipping</u> .....	<a href="#">B1-30</a>
B1-67 <u>List of References</u> .....	<a href="#">B1-31</a>

## List of Tables

<b>Table</b>	<b>Title</b>
B1-1	Gas Sample Containers and Holding Times
B1-2	Summary of Drum Field QC Headspace Sample Frequencies
B1-3	Summary of Sampling Quality Control Sample Acceptance Criteria
B1-4	Sampling Handling Requirements for Homogeneous Solids and Soil/Gravel
B1-5	Headspace Gas Drum Age Criteria Sampling Scenarios
B1-6	Scenario 1 Drum Age Criteria (In Days) Matrix
B1-7	Scenario 2 Drum Age Criteria (In Days) Matrix
B1-8	Scenario 3 Packaging Configuration Groups
B1-9	Scenario 3 Drum Age Criteria (In Days) Matrix for S5000 Waste By Packaging Configuration Group
<del>B1-10</del>	<del>Scenario 3 Drum Age Criteria (In Days) Matrix for S3000 and S4000 Waste By Packaging Configuration Group</del>

## List of Figures

<b>Figure</b>	<b>Title</b>
B1-1	Headspace Gas Drum Age Criteria Sampling Scenario Selection Process
B1-2	Headspace Sampling Manifold
B1-3	SUMMA® Canister Components Configuration (Not to Scale)
B1-4	Schematic Diagram of Direct Canister with the Poly Bag Sampling Head
B1-5	Rotational Coring Tool (Light Weight Auger)
B1-6	Non-Rotational Coring Tool (Thin Walled Sampler)
<del>B1-7</del>	<del>Overall Programmatic Approach to Visual Examination</del>

(This page intentionally blank)

## ATTACHMENT B1

### WASTE CHARACTERIZATION SAMPLING METHODS

#### 1 Introduction

2 The Permittees will require generator/storage sites (**sites**) to use the following methods, **as**  
3 **applicable**, for **characterization** of TRU mixed waste which is managed, stored, or disposed at  
4 WIPP. These methods include requirements for headspace-gas sampling, sampling of  
5 homogeneous solids and soils/gravel, and radiography **or visual examination**. Additionally, this  
6 Attachment provides quality control, sample custody, and sample packing and shipping  
7 requirements.

#### 8 B1-1 ~~Headspace Gas Sampling~~ Sampling of Debris Waste (Summary Category S5000)

9 **Headspace gas sampling and analysis shall be used to resolve the assignment of**  
10 **Environmental Protection Agency (EPA) hazardous waste numbers to debris waste streams.**

#### 11 B1-1a Method Requirements

12 The Permittees shall require all headspace-gas sampling be performed in an appropriate  
13 radiation containment area on waste containers that are in compliance with the container  
14 equilibrium requirements (i.e., 72 hours at 18° C or higher).

#### 15 B1-1a(1) ~~Summary Category S5000 Requirements~~

16 ~~With the exception of qualifying LANL sealed sources waste containers, all waste containers or~~  
17 **For those waste streams without an acceptable knowledge (AK) Sufficiency Determination**  
18 **approved by the Permittees, containers shall be** randomly selected ~~containers~~ from waste  
19 streams that meet the conditions for reduced headspace gas sampling listed in Permit  
20 Attachment B, Section B-3a(1), designated as summary category S5000 (Debris waste) **and**  
21 shall be categorized under one of the sampling scenarios shown in Table B1-5 and depicted in  
22 Figure B1-1. ~~The LANL sealed sources waste containers that meet specified conditions must be~~  
23 ~~assigned VOC concentration values in accordance with Section B-3a(1)(iii).~~ If the container is  
24 categorized under Scenario 1, the applicable drum age criteria (**DAC**) from Table B1-6 must be  
25 met prior to headspace gas sampling. If the container is categorized under Scenario 2, the  
26 applicable Scenario 1 DAC from Table B1-6 must be met prior to venting the container and then  
27 the applicable Scenario 2 DAC from Table B1-7 must be met after venting the container. The  
28 DAC for Scenario 2 containers that contain filters or rigid liner vent holes other than those listed  
29 in Table B1-7 shall be determined using footnotes "a" and "b" in Table B1-7. Containers that  
30 have not met the Scenario 1 DAC at the time of venting must be categorized under Scenario 3.  
31 Containers categorized under Scenario 3 must be placed into one of the Packaging  
32 Configuration Groups listed in Table B1-8. If a specific packaging configuration cannot be  
33 determined based on the data collected during packaging and/or repackaging (Attachment B,  
34 Section B-3(d)(1)), a conservative default Packaging Configuration Group of 3 for 55-gallon  
35 drums, 6 for Standard Waste Boxes (**SWBs**) and ten-drum overpacks (**TDOPs**), and 8 for 85-

1 gallon and 100-gallon drums must be assigned, provided the drums do not contain pipe  
2 component packaging. If a container is designated as Packaging Configuration Group 4 (i.e., a  
3 pipe component), the headspace gas sample must be taken from the pipe component  
4 headspace. Drums, TDOPs, or SWBs that contain compacted 55-gallon drums containing a  
5 rigid liner may not be disposed of under any packaging configuration unless headspace gas  
6 sampling was performed before compaction in accordance with this waste analysis plan (WAP).  
7 The DAC for Scenario 3 containers that contain rigid liner vent holes that are undocumented  
8 during packaging (Attachment B, Section B-3(d)1), repackaging (Attachment B, Section B-  
9 3(d)1), and/or venting (Section B1-1a[64][ii]) shall be determined using the default conditions in  
10 footnote "b" in Table B1-9. The DAC for Scenario 3 containers that contain filters that are either  
11 undocumented or are other than those listed in Table B1-9 shall be determined using footnote  
12 'a' in Table B1-9. Each of the Scenario 3 containers shall be sampled for headspace gas after  
13 waiting the DAC in Table B1-9 based on its packaging configuration (note: Packaging  
14 Configuration Groups 4, 5, 6, 7, and 8 are not summary category group dependent, and 85-  
15 gallon drum, 100-gallon drum, SWB, and TDOP requirements apply when the 85-gallon drum,  
16 100-gallon drum, SWB, or TDOP is used for the direct loading of waste).

#### 17 B1-1a(2) Summary Category S3000/S4000 Requirements

18 ~~All waste containers or randomly selected containers from waste streams that meet the~~  
19 ~~conditions for reduced headspace gas sampling listed in Permit Attachment B, Section B-3a(1),~~  
20 ~~designated as summary categories S3000 (Homogeneous solids) and S4000 (Soil/gravel) shall~~  
21 ~~be categorized under one of the sampling scenarios shown in Table B1-5 and depicted in~~  
22 ~~Figure B1-1. If the container is categorized under Scenario 1, the applicable DAC from Table~~  
23 ~~B1-6 must be met prior to headspace gas sampling. If the container is categorized under~~  
24 ~~Scenario 2, the applicable Scenario 1 DAC from Table B1-6 must be met prior to venting the~~  
25 ~~container and then the applicable Scenario 2 DAC from Table B1-7 must be met after venting~~  
26 ~~the container. The DAC for Scenario 2 containers that contain filters or rigid liner vent holes~~  
27 ~~other than those listed in Table B1-7 shall be determined using footnotes "a" and "b" in Table~~  
28 ~~B1-7. Containers that have not met the Scenario 1 DAC at the time of venting must be~~  
29 ~~categorized under Scenario 3. Containers categorized under Scenario 3 must be placed into~~  
30 ~~one of the Packaging Configuration Groups listed in Table B1-8. If a specific packaging~~  
31 ~~configuration cannot be determined based on the data collected during packaging and/or~~  
32 ~~repackaging (Attachment B, Section B-3(d)1), a conservative default Packaging Configuration~~  
33 ~~Group of 3 for 55-gallon drums, 6 for SWBs and TDOPs, and 8 for 85-gallon and 100-gallon~~  
34 ~~drums must be assigned, provided the drums do not contain pipe component packaging. If a~~  
35 ~~container is designated as Packaging Configuration Group 4 (i.e., a pipe component), the~~  
36 ~~headspace gas sample must be taken from the pipe component headspace. Drums, TDOPs, or~~  
37 ~~SWBs that contain compacted 55-gallon drums containing a rigid liner may not be disposed of~~  
38 ~~under any packaging configuration unless headspace gas sampling was performed before~~  
39 ~~compaction in accordance with this WAP.. The DAC for Scenario 3 containers that contain rigid~~  
40 ~~liner vent holes that are undocumented during packaging (Attachment B, Section B-3(d)1),~~  
41 ~~repackaging (Attachment B, Section B-3(d)1), and/or venting (Section B1-1a[6][iii]) shall be~~  
42 ~~determined using the default conditions in footnote "b" in Table B1-10. The DAC for Scenario 3~~  
43 ~~containers that contain filters that are either undocumented or are other than those listed in~~  
44 ~~Table B1-10 shall be determined using footnote 'a' in Table B1-10. Each of the Scenario 3~~  
45 ~~containers shall be sampled after waiting the DAC in Table B1-10 based on its packaging~~  
46 ~~configuration (note: Packaging Configuration Groups 4, 5, 6, 7, and 8 are not summary category~~



1 ~~group dependent, and 85-gallon drum, 100-gallon drum, SWB, and TDOP requirements apply~~  
2 ~~when the 85-gallon drum, 100-gallon drum, SWB, or TDOP is used for the direct loading of~~  
3 ~~waste).~~

4 B1-1a(31) General Requirements

5 The determination of packaging configuration consists of identifying the number of confinement  
6 layers and the identification of rigid poly liners when present. Generator/storage sites shall use  
7 either the default conditions specified in Tables B1-7 through B1-10 for retrievably stored waste  
8 or the data documented during packaging (~~Attachment B, Section B-3(d)1~~), repackaging  
9 (~~Attachment B, Section B-3(d)1~~), and/or venting (Section B1-1a[64][ii]) for determining the  
10 appropriate DAC for each container from which a headspace gas sample is collected. These  
11 drum age criteria are to ensure that the container contents have reached 90 percent of steady  
12 state concentration within each layer of confinement (Lockheed, 1995; BWXT, 2000). The  
13 following information must be reported in the headspace gas sampling documents for each  
14 container from which a headspace gas sample is collected:

- 15 • sampling scenario from Table B1-5 and associated information from Tables B1-6 and/or  
16 Table B1-7;
- 17 • the packaging configuration from Table B1-8 and associated information from Tables  
18 B1-9 or B1-10, including the diameter of the rigid liner vent hole, the number of inner  
19 bags, the number of liner bags, the presence/absence of drum liner, and the filter  
20 hydrogen diffusivity,
- 21 • the permit-required equilibrium time,
- 22 • the drum age,
- 23 • for supercompacted waste, both
  - 24 • the absence of rigid liners in the compacted 55-gallon drums which have not  
25 been headspace gas sampled in accordance with this permit prior to compaction,  
26 and
  - 27 • the absence of layers of confinement must be documented in the WWIS if  
28 Packaging Configuration Group 7 is used.

29 For all retrievably stored waste containers, the rigid liner vent hole diameter must be assumed  
30 to be 0.3 inches unless a different size is documented during drum venting or repackaging. For  
31 all retrievably stored waste containers, the filter hydrogen diffusivity must be assumed to be the  
32 most restrictive unless container-specific information clearly identifies a filter model and/or  
33 diffusivity characteristic that is less restrictive. For all retrievably stored waste containers that  
34 have not been repackaged, acceptable knowledge shall not be used to justify any packaging  
35 configuration less conservative than the default (i.e., Packaging Configuration Group 3 for 55-  
36 gallon drums, 6 for SWBs and TDOPs, and 8 for 85-gallon and 100-gallon drums). For  
37 information reporting purposes listed above, sites may report the default packaging  
38 configuration for retrievably stored waste without further confirmation.

39 All waste containers with unvented rigid containers greater than 4 liters (exclusive of rigid poly  
40 liners) shall be subject to innermost layer of containment sampling or shall be vented prior to  
41 initiating drum age and equilibrium criteria. When sampling the rigid poly liner under Scenario 1,  
42 the sampling device must form an airtight seal with the rigid poly liner to ensure that a  
43 representative sample is collected (using a sampling needle connected to the sampling head to

1 pierce the rigid poly liner, and that allows for the collection of a representative sample, satisfies  
2 this requirement). The configuration of the containment area and remote-handling equipment at  
3 each sampling facility are expected to differ. Headspace-gas samples will be analyzed for the  
4 analytes listed in Table B3-2 of Permit Attachment B3. If additional packaging configurations are  
5 identified, an appropriate Permit Modification will be submitted to incorporate the DAC using the  
6 methodology in BWXT (2000). Consistent with footnote "a" in Table B1-8, any waste container  
7 **selected for headspace gas sampling** that cannot be assigned a packaging configuration  
8 specified in Table B1-8 shall ~~not be shipped to or accepted for disposal at WIPP~~ **assigned a**  
9 **conservative default packaging configuration..**

10 Drum age criteria apply only to 55-gallon drums, 85-gallon drums, 100-gallon drums, standard  
11 waste boxes, and TDOPs. Drum age criteria for all other container types must be established  
12 through permit modification prior to ~~acceptance of these containers at WIPP~~ **performing**  
13 **headspace gas sampling..**

14 The Permittees shall require site personnel to collect samples in SUMMA® or equivalent  
15 canisters using standard headspace-gas sampling methods that meet the general guidelines  
16 established by the U.S. Environmental Protection Agency (EPA) in the Compendium Method  
17 TO-14, Redetermination of Volatile Organic Compounds (VOC) in Ambient Air using ~~Summa~~  
18 **SUMMA®** Passivated Canister Sampling and Gas Chromatography Analysis (EPA 1988) or by  
19 using on-line integrated sampling/analysis systems. Samples will be directed to an analytical  
20 instrument instead of being collected in SUMMA® or equivalent canisters if a single-sample on-  
21 line integrated sampling/analysis system is used. If a multi-sample on-line integrated  
22 sampling/analysis system is used, samples will be directed to an integrated holding area that  
23 meets the cleaning requirements of Section B1-1c(1). The leak proof and inert nature of the  
24 integrated holding area interior surface must be demonstrated and documented. Samples are  
25 not transported to another location when using on-line integrated sampling/analysis systems;  
26 therefore, the sample custody requirements of Section B1-4 and B1-5 do not apply. The same  
27 sampling manifold and sampling heads are used with on-line integrated sampling/analysis  
28 systems and all of the requirements associated with sampling manifolds and sampling heads  
29 must be met. However, when using an on-line integrated sampling/analysis system, the  
30 sampling batch and analytical batch quality control (QC) samples are combined as on-line batch  
31 QC samples as outlined in Section B1-1b.

#### 32 B1-1a(42) Manifold Headspace Gas Sampling

33 This headspace-gas sampling protocol employs a multiport manifold capable of collecting  
34 multiple simultaneous headspace samples for analysis and QC purposes. The manifold can be  
35 used to collect samples in SUMMA® or equivalent canisters or as part of an on-line integrated  
36 sampling/analysis system. The sampling equipment will be leak checked and cleaned prior to  
37 first use and as needed thereafter. The manifold and sample canisters will be evacuated to  
38 0.0039 inches (in.) (0.10 millimeters [mm]) mercury (Hg) prior to sample collection. Cleaned and  
39 evacuated sample canisters will be attached to the evacuated manifold before the manifold inlet  
40 valve is opened. The manifold inlet valve will be attached to a changeable filter connected to  
41 either a side port needle sampling head capable of forming an airtight seal (for penetrating a  
42 filter or rigid poly liner when necessary), a drum punch sampling head capable of forming an  
43 airtight seal (capable of punching through the metal lid of a drum for sampling through the drum

1 lid), or a sampling head with an airtight fitting for sampling through a pipe overpack container  
2 filter vent hole. Refer to Section B1-1a(64) for descriptions of these sampling heads.

3 The manifold shall also be equipped with a purge assembly that allows applicable QC samples  
4 to be collected through all sampling components that may affect compliance with the **quality**  
5 **assurance objectives (QAO's)**. The Permittees shall require the sites to demonstrate and  
6 document the effectiveness of the sampling equipment design in meeting the QAOs. Field  
7 blanks shall be samples of room air collected in the sampling area in the immediate vicinity of  
8 the waste container to be sampled. If using SUMMA® or equivalent canisters, field blanks shall  
9 be collected directly into the canister, without the use of the manifold.

10 The manifold, the associated sampling heads, and the headspace-gas sample volume  
11 requirements shall be designed to ensure that a representative sample is collected. The  
12 manifold internal volume must be calculated and documented in a field logbook dedicated to  
13 headspace-gas sample collection. The total volume of headspace gases collected during each  
14 sampling operation will be determined by adding the combined volume of the canisters attached  
15 to the manifold and the internal volume of the manifold. The sample volume should remain small  
16 in comparison to the volume of the waste container. When an estimate of the available  
17 headspace gas volume in the drum can be made, less than 10 percent of that volume should be  
18 withdrawn.

19 As illustrated in Figure B1-2, the sampling manifold must consist of a sample side and a  
20 standard side. The dotted line in Figure B1-2 indicates how the sample side shall be connected  
21 to the standard side for cleaning and collecting equipment blanks and field reference standards.  
22 The sample side of the sampling manifold shall consist of the following major components:

- 23 C An applicable sampling head that forms a leak-tight connection with the  
24 headspace sampling manifold.
- 25 C A flexible hose that allows movement of the sampling head from the purge  
26 assembly (standard side) to the waste container.
- 27 C A pressure sensor(s) that must be pneumatically connected to the manifold. This  
28 manifold pressure sensor(s) must be able to measure absolute pressure in the  
29 range from 0.002 in. (0.05 mm) Hg to 39.3 in. (1,000 mm) Hg. Resolution for the  
30 manifold pressure sensors must be  $\pm 0.0004$  in. (0.01 mm) Hg at 0.002 in. (0.05  
31 mm) of Hg. The manifold pressure sensor(s) must have an operating range from  
32 approximately 59°F (15°C) to 104°F (40°C).
- 33 C Available ports for attaching sample canisters. If using canister-based sampling  
34 methods, a sufficient number of ports shall be available to allow simultaneous  
35 collection of headspace-gas samples and duplicates for VOC analyses. If using  
36 an on-line integrated sampling/analysis system, only one port is necessary for  
37 the collection of comparison samples. Ports not occupied with sample canisters  
38 during cleaning or headspace-gas sampling activities require a plug to prevent  
39 ambient air from entering the system. In place of using plugs, sites may choose  
40 to install valves that can be closed to prevent intrusion of ambient air into the

- 1 manifold. Ports shall have VCR® fittings for connection to the sample canister(s)  
2 to prevent degradation of the fittings on the canisters and manifold.
- 3 C Sample canisters, as illustrated in Figure B1-3, are leak-free, stainless steel  
4 pressure vessels, with a chromium-nickel oxide (**Cr-NiO**) SUMMA®-passivated  
5 interior surface, bellows valve, and a pressure/vacuum gauge. Equivalent  
6 designs, such as Silco Steel canisters, may be used so long as the leak proof  
7 and inert nature of the canister interior surface is demonstrated and documented.  
8 All sample canisters must have VCR® fittings for connection to sampling and  
9 analytical equipment. The pressure/vacuum gauge must be mounted on each  
10 manifold. The canister must be helium-leak tested to  $1.5 \times 10^{-7}$  standard cubic  
11 centimeters per second (cc/s), have all stainless steel construction, and be  
12 capable of tolerating temperatures to 125°C. The gauge range shall be capable  
13 of operating in the leak test range as well as the sample collection range.
- 14 C A dry vacuum pump with the ability to reduce the pressure in the manifold to 0.05  
15 mm Hg. A vacuum pump that requires oil may be used, but precautions must be  
16 taken to prevent diffusion of oil vapors back to the manifold. Precautions may  
17 include the use of a molecular sieve and a cryogenic trap in series between the  
18 headspace sampling ports and the pump.
- 19 C A minimum distance, based upon the design of the manifold system, between the  
20 tip of the needle and the valve that isolates the pump from the manifold in order  
21 to minimize the dead volume in the manifold.
- 22 C If real-time equipment blanks are not available, the manifold must be equipped  
23 with an organic vapor analyzer (**OVA**) that is capable of detecting all analytes  
24 listed in Table B3-2 of Permit Attachment B3. The OVA shall be capable of  
25 measuring total VOC concentrations below the lowest headspace gas PRQL .  
26 Detection of 1,1,2-trichloro-1,2,2-trifluoroethane may not be possible if a  
27 photoionization detector is used. The OVA measurement shall be confirmed by  
28 the collection of equipment blanks at the frequency specified in Section B1-1 to  
29 check for manifold cleanliness.

30 The standard side must consist of the following major elements:

- 31 C A cylinder of compressed zero air, helium, argon, or nitrogen gas that is  
32 hydrocarbon and carbon dioxide (**CO<sub>2</sub>**)-free (only hydrocarbon and CO<sub>2</sub>-free  
33 gases required for Fourier Transform Infrared System [**FTIRS**]) to clean the  
34 manifold between samples and to provide gas for the collection of equipment  
35 blanks or on-line blanks. These high-purity gases shall be certified by the  
36 manufacturer to contain less than one ppm total VOCs. The gases must be  
37 metered into the standard side of the manifold using devices that are corrosion  
38 proof and that do not allow for the introduction of manifold gas into the purge gas  
39 cylinders or generator. Alternatively, a zero air or nitrogen generator may be  
40 used, provided a sample of the zero air or nitrogen is collected and demonstrated  
41 to contain less than one ppm total VOCs. Zero air or nitrogen from a generator  
42 shall be humidified (except for use with FTIRS).

1 C Cylinders of field-reference standard gases or on-line control sample gases.  
2 These cylinders provide gases for evaluating the accuracy of the headspace-gas  
3 sampling process. Each cylinder of field-reference gas or on-line control sample  
4 gas shall have a flow-regulating device. The field-reference standard gases or  
5 on-line control sample gas shall be certified by the manufacturer to contain  
6 analytes from Table B3-2 of Permit Attachment B3 at known concentrations.

7 C If using an analytical method other than FTIRS a humidifier filled with American  
8 Society for Testing and Materials (**ASTM**) Type I or II water, connected, and  
9 opened to the standard side of the manifold between the compressed gas  
10 cylinders and the purge assembly shall be used. Dry gases flowing to the purge  
11 assembly will pick up moisture from the humidifier. Moisture is added to the dry  
12 gases to condition the equipment blanks and field-reference standards and to  
13 assist with system cleaning between headspace-gas sample collection. If using  
14 FTIRS for analysis, the sample and sampling system shall be kept dry.

15 NOTE: Caution should be exercised to isolate the humidifier during the  
16 evacuation of the system to prevent flooding the manifold. In lieu of the  
17 humidifier, the compressed gas cylinders (e.g., zero air and field-reference  
18 standard gas) may contain water vapor in the concentration range of 1,000 to  
19 10,000 parts per million by volume (**ppmv**).

20 C A purge assembly that allows the sampling head (sample side) to be connected  
21 to the standard side of the manifold. The ability to make this connection is  
22 required to transfer gases from the compressed gas cylinders to the canisters or  
23 on-line analytical instrument. This connection is also required for system  
24 cleaning.

25 C A flow-indicating device or a pressure regulator that is connected to the purge  
26 assembly to monitor the flow rate of gases through the purge assembly. The flow  
27 rate or pressure through the purge assembly shall be monitored to assure that  
28 excess flow exists during cleaning activities and during QC sample collection.  
29 Maintaining excess flow will prevent ambient air from contaminating the QC  
30 samples and allow samples of gas from the compressed gas cylinders to be  
31 collected near ambient pressure.

32 In addition to a manifold consisting of a sample side and a standard side, the area in which the  
33 manifold is operated shall contain sensors for measuring ambient pressure and ambient  
34 temperature, as follows:

35 C The ambient-pressure sensor must have a sufficient measurement range for the  
36 ambient barometric pressures expected at the sampling location. It must be kept  
37 in the sampling area during sampling operations. Its resolution shall be 0.039 in.  
38 (1.0 mm) Hg or less, and calibration performed by the manufacturer shall be  
39 based on National Institute of Standards and Technology (**NIST**), or equivalent,  
40 standards.

- 1           C       The temperature sensor shall have a sufficient measurement range for the  
2                    ambient temperatures expected at the sampling location. The measurement  
3                    range of the temperature sensor must be from 18°C to 50°C. The temperature  
4                    sensor calibration shall be traceable to NIST, or equivalent, standards.

5       B1-1a(53) Direct Canister Headspace Gas Sampling

6       This headspace-gas sampling protocol employs a canister-sampling system to collect  
7       headspace-gas samples for analysis and QC purposes without the use of the manifold  
8       described above. Rather than attaching sampling heads to a manifold, in this method the  
9       sampling heads are attached directly to an evacuated sample canister as shown in Figure B1-4.

10      Canisters shall be evacuated to 0.0039 in. (0.10 mm) Hg prior to use and attached to a  
11      changeable filter connected to the appropriate sampling head. The sampling head(s) must be  
12      capable of either punching through the metal lid of the drums (and/or the rigid poly liner when  
13      necessary) while maintaining an airtight seal when sampling through the drum lid, penetrating a  
14      filter or the septum in the orifice of the self-tapping screw, or maintaining an airtight seal for  
15      sampling through a pipe overpack container filter vent hole to obtain the drum headspace  
16      samples. Field duplicates must be collected at the same time, in the same manner, and using  
17      the same type of sampling apparatus as used for headspace-gas sample collection. Field  
18      blanks shall be samples of room air collected in the immediate vicinity of the waste-drum  
19      sampling area prior to removal of the drum lid. Equipment blanks and field-reference standards  
20      must be collected using a purge assembly equivalent to the standard side of the manifold  
21      described above. These samples shall be collected from the needle tip through the same  
22      components (e.g., needle and filter) that the headspace-gas samples pass through.

23      The sample canisters, associated sampling heads, and the headspace-sample volume  
24      requirements ensure that a representative sample is collected. When an estimate of the  
25      available headspace-gas volume of the waste container can be made, less than 10 percent of  
26      that volume should be withdrawn. A determination of the sampling head internal volume shall be  
27      made and documented. The total volume of headspace gases collected during each headspace  
28      gas sampling operation can be determined by adding the volume of the sample canister(s)  
29      attached to the sampling head to the internal volume of the sampling head. Every effort shall be  
30      made to minimize the internal volume of sampling heads.

31      Each sample canister used with the direct canister method shall have a pressure/vacuum gauge  
32      capable of indicating leaks and sample collection volumes. Canister gauges are intended to be  
33      gross leak-detection devices not vacuum-certification devices. If a canister pressure/vacuum  
34      gauge indicates an unexpected pressure change, determination of whether the change is a  
35      result of ambient temperature and pressure differences or a canister leak shall be made. This  
36      gauge shall be helium-leak tested to  $1.5 \times 10^{-7}$  standard cc/s, have all stainless steel  
37      construction, and be capable of tolerating temperatures to 125°C.

38      The SUMMA® or equivalent sample canisters as specified in EPA's Compendium Method TO-  
39      14 (EPA 1988) shall be used when sampling each drum. These heads shall form a leak-tight  
40      connection with the canister and allow sampling through the drum-lid filter, through the drum lid  
41      itself and/or rigid poly liner when necessary (by use of a punch or self-tapping screw), using an

1 airtight fitting to collect the sample through the filter vent hole of a pipe overpack container, or  
2 using a hollow side port needle. Figure B1-4 illustrates the direct canister-sampling equipment.

3 B1-1a(64) Sampling Heads

4 A sample of the headspace gas directly under the container lid, pipe overpack filter vent hole, or  
5 rigid poly liner shall be collected. Several methods have been developed for collecting a  
6 representative sample: sampling through the filter, sampling through the drum lid by drum  
7 punching, sampling through a pipe overpack container filter vent hole, and sampling through the  
8 rigid poly liner. The chosen sampling method shall preserve the integrity of the drum to contain  
9 radionuclides (e.g., replace the damaged filter, replace set screw in filter housing, seal the  
10 punched drum lid).

11 B1-1a(64)(i) Sampling Through the Filter

12 To sample the drum-headspace gas through the drum's filter, a side-port needle (e.g., a hollow  
13 needle sealed at the tip with a small opening on its side close to the tip) shall be pressed  
14 through the filter and into the headspace beneath the drum lid. This permits the gas to be drawn  
15 into the manifold or directly into the canister(s). To assure that the sample collected is  
16 representative, all of the general method requirements, sampling apparatus requirements, and  
17 QC requirements described in this section shall be met in addition to the following requirements  
18 that are pertinent to drum headspace-gas sampling through the filter:

19 C The lid of the drum's 90-mil rigid poly liner shall contain a hole for venting to the  
20 drum headspace. A representative sample cannot be collected from the drum  
21 headspace until the 90-mil rigid poly liner has been vented. If the DAC for  
22 Scenario 1 is met, a sample may be collected from inside the 90-mil rigid poly  
23 liner. If the sample is collected by removing the drum lid, the sampling device  
24 shall form an airtight seal with the rigid poly liner to prevent the intrusion of  
25 outside air into the sample (using a sampling needle connected to the sampling  
26 head to pierce the rigid poly liner satisfies this requirement). If headspace-gas  
27 samples are collected from the drum headspace prior to venting the 90-mil rigid  
28 poly liner, the sample is not acceptable and a nonconformance report shall be  
29 prepared, submitted, and resolved. Nonconformance procedures are outlined in  
30 Permit Attachment B3.

31 C For sample collection, the drum's filter shall be sealed to prevent outside air from  
32 entering the drum and diluting and/or contaminating the sample.

33 The sampling head for collecting drum headspace by penetrating the filter shall consist of a  
34 side-port needle, a filter to prevent particles from contaminating the gas sample, and an adapter  
35 to connect the side-port needle to the filter. To prevent cross contamination, the sampling head  
36 shall be cleaned or replaced after sample collection, after field-reference standard collection,  
37 and after field-blank collection. The following requirements shall also be met:

38 C The housing of the filter shall allow insertion of the sampling needle through the  
39 filter element or a sampling port with septum that bypasses the filter element into  
40 the drum headspace.

- 1 C The side-port needle shall be used to reduce the potential for plugging.
- 2 C The purge assembly shall be modified for compatibility with the side-port needle.

3 B1-1a(64)(ii) Sampling Through the Drum Lid By Drum Lid Punching

4 Sampling through the drum lid at the time of drum punching or thereafter may be performed as  
5 an alternative to sampling through the drum's filter if an airtight seal can be maintained. To  
6 sample the drum headspace-gas through the drum lid at the time of drum punching or  
7 thereafter, the lid shall be breached using an appropriate punch. The punch shall form an  
8 airtight seal between the drum lid and the manifold or direct canister sampling equipment. To  
9 assure that the sample collected is representative, all of the general method requirements,  
10 sampling apparatus requirements, and QC requirements specified in EPA's Compendium  
11 Method TO-14 (EPA 1988) as appropriate, shall be met in addition to the following  
12 requirements:

- 13 C The seal between the drum lid and sampling head shall be designed to minimize  
14 intrusion of ambient air.
- 15 C All components of the sampling system that come into contact with sample gases  
16 shall be purged with humidified zero air, nitrogen, or helium prior to sample  
17 collection.
- 18 C Equipment blanks and field reference standards shall be collected through all the  
19 components of the punch that contact the headspace-gas sample.
- 20 C Pressure shall be applied to the punch until the drum lid has been breached.
- 21 C Provisions shall be made to relieve excessive drum pressure increases during  
22 drum-punch operations; potential pressure increases may occur during sealing of  
23 the drum punch to the drum lid.
- 24 C The lid of the drum's 90-mil rigid poly liner shall contain a hole for venting to the  
25 drum headspace. A representative sample cannot be collected from the drum  
26 headspace until the 90-mil rigid poly liner has been vented. If the DAC for  
27 Scenario 1 is met, a sample may be collected from inside the 90-mil rigid poly  
28 liner. If headspace-gas samples are collected from the drum headspace prior to  
29 venting the 90-mil rigid poly liner, the sample is not acceptable and a  
30 nonconformance report shall be prepared, submitted, and resolved.  
31 Nonconformance procedures are outlined in Permit Attachment B3.
- 32 C During sampling, the drum's filter, if present, shall be sealed to prevent outside  
33 air from entering the drum.
- 34 C While sampling through the drum lid using manifold sampling, a flow-indicating  
35 device or pressure regulator to verify flow of gases shall be pneumatically  
36 connected to the drum punch and operated in the same manner as the flow-  
37 indicating device described above in Section B1-1a(4).



- 1           C       Equipment shall be used to adequately secure the drum-punch sampling system  
2                   to the drum lid.
- 3           •       If the headspace gas sample is not taken at the time of drum punching, the  
4                   presence and diameter of the rigid liner vent hole shall be documented during the  
5                   punching operation for use in determining an appropriate Scenario 2 DAC.

6       B1-1a(64)(iii) Sampling Through a Pipe Overpack Container Filter Vent Hole

7       Sampling through an existing filter vent hole in a pipe overpack container (**POC**) may be  
8       performed as an alternative to sampling through the POC's filter if an airtight seal can be  
9       maintained. To sample the container headspace-gas through a POC filter vent hole, an  
10       appropriate airtight seal shall be used. The sampling apparatus shall form an airtight seal  
11       between the POC surface and the manifold or direct canister sampling equipment. To assure  
12       that the sample collected is representative, all of the general method, sampling apparatus, and  
13       QC requirements specified in EPA's Compendium Method TO-14 (EPA 1988) as appropriate,  
14       shall be met in addition to the following requirements:

- 15           C       The seal between the POC surface and sampling apparatus shall be designed to  
16                   minimize intrusion of ambient air.
- 17           C       The filter shall be replaced as quickly as is practicable with the airtight sampling  
18                   apparatus to ensure that a representative sample can be taken. Sites must  
19                   provide documentation demonstrating that the time between removing the filter  
20                   and installing the airtight sampling device has been established by testing to  
21                   assure a representative sample.
- 22           C       All components of the sampling system that come into contact with sample gases  
23                   shall be cleaned according to requirements for direct canister sampling or  
24                   manifold sampling, whichever is appropriate, prior to sample collection.
- 25           C       Equipment blanks and field reference standards shall be collected through all the  
26                   components of the sampling system that contact the headspace-gas sample.
- 27           C       During sampling, openings in the POC shall be sealed to prevent outside air from  
28                   entering the container.
- 29           C       A flow-indicating device shall be connected to sampling system and operated  
30                   according to the direct canister or manifold sampling requirements, as  
31                   appropriate.

32       B1-1b Quality Control

33       For manifold and direct canister sampling systems, field QC samples shall be collected on a per  
34       sampling batch basis. A sampling batch is a suite of samples collected consecutively using the  
35       same sampling equipment within a specific time period. A sampling batch can be up to 20  
36       samples (excluding QC samples), all of which shall be collected within 14 days of the first  
37       sample in the batch. For on-line integrated sampling/analysis systems, QC samples shall be

1 collected and analyzed on a per on-line batch basis. Holding temperatures and container  
2 requirements for gas sample containers are provided in Table B1-1. An on-line batch is the  
3 number of headspace-gas samples collected within a 12-hour period using the same on-line  
4 integrated analysis system. The analytical batch requirements are specified by the analytical  
5 method being used in the on-line system. Table B1-2 provides a summary of field QC sample  
6 collection requirements. Table B1-3 provides a summary of QC sample acceptance criteria.

7 For on-line integrated sampling analysis systems, the on-line batch QC samples serve as  
8 combined sampling batch/analytical batch QC samples as follows:

- 9 C The on-line blank replaces the equipment blank and laboratory blank
- 10 C The on-line control sample replaces the field reference standard and laboratory  
11 control sample
- 12 C The on-line duplicate replaces the field duplicate and laboratory duplicate

13 The acceptance criteria for on-line batch QC samples are the same as for the sampling batch  
14 and analytical batch QC samples they replace. Acceptance criteria are shown in Table B1-3. A  
15 separate field blank shall still be collected and analyzed for each on-line batch. However, if the  
16 results of a field blank collected through the sampling manifold meets the acceptance criterion,  
17 a separate on-line blank need not be collected and analyzed.

18 The Permittees shall require the site project Quality Assurance (**QA**) officer to monitor and  
19 document field QC sample results and fill out a nonconformance report if acceptance or  
20 frequency criteria are not met. The Permittees shall require the site project manager to ensure  
21 appropriate corrective action is taken if acceptance criteria are not met.

#### 22 B1-1b(1) Field Blanks

23 Field blanks shall be collected to evaluate background levels of program-required analytes.  
24 Field blanks shall be collected prior to sample collection, and at a frequency of one per  
25 sampling batch. The Permittees shall require the site project manager to use the field blank data  
26 to assess impacts of ambient contamination, if any, on the sample results. Field blank results  
27 determined by gas chromatography/mass spectrometry and gas chromatography/flame  
28 ionization detection shall be acceptable if the concentration of each VOC analyte is less than or  
29 equal to three times the method detection limit (**MDL**) listed in Table B3-2 in Permit Attachment  
30 B3. Field blank results determined by FTIRS shall be acceptable if the concentration of each  
31 VOC analyte is less than the program required quantitation limit listed in Table B3-2. A  
32 nonconformance report shall be initiated and resolved if the final reported QC sample results do  
33 not meet the acceptance criteria.

#### 34 B1-1b(2) Equipment Blanks

35 Equipment blanks shall be collected to assess cleanliness prior to first use after cleaning of all  
36 sampling equipment. On-line blanks will be used to assess equipment cleanliness as well as  
37 analytical contamination. After the initial cleanliness check, equipment blanks collected through  
38 the manifold shall be collected at a frequency of one per sampling batch for VOC analysis or

1 one per day, whichever is more frequent. If the direct canister method is used, field blanks may  
2 be used in lieu of equipment blanks. The Permittees shall require the site project manager to  
3 use the equipment blank data to assess impacts of potentially contaminated sampling  
4 equipment on the sample results. Equipment blank results determined by gas  
5 chromatography/mass spectrometry or gas chromatography/flammability ionization detection shall be  
6 acceptable if the concentration of each VOC analyte is less than or equal to three times the  
7 MDL listed in Table B3-2 in Permit Attachment B3. Equipment blank results determined by  
8 FTIRS shall be acceptable if the concentration of each VOC analyte is less than the program  
9 required quantitation limit listed in Table B3-2.

#### 10 B1-1b(3) Field Reference Standards

11 Field reference standards shall be used to assess the accuracy with which the sampling  
12 equipment collects VOC samples into SUMMA® or equivalent canisters prior to first use of the  
13 sampling equipment. The on-line control sample will be used to assess the accuracy with which  
14 the sampling equipment collects VOC samples as well as an indicator of analytical accuracy for  
15 the on-line sampling system. Field reference standards shall contain a minimum of six of the  
16 analytes listed in Table B3-2 in Permit Attachment B3 at concentrations within a range of 10 to  
17 100 ppmv and greater than the MDL for each compound. Field reference standards shall have a  
18 known valid relationship to a nationally recognized standard (e.g., NIST), if available. If NIST  
19 traceable standards are not available and commercial gases are used, a Certificate of Analysis  
20 from the manufacturer documenting traceability is required. Commercial stock gases shall not  
21 be used beyond their manufacturer-specified shelf life. After the initial accuracy check, field  
22 reference standards collected through the manifold shall be collected at a frequency of one per  
23 sampling batch and submitted as blind samples to the analytical laboratory. For the direct  
24 canister method, field reference standard collection may be discontinued if the field reference  
25 standard results demonstrate the ~~quality assurance objectives (QAO)~~ for accuracy specified in  
26 Appendix B3. Field reference standard results shall be acceptable if the accuracy for each  
27 tested compound has a recovery of 70 to 130 percent .

#### 28 B1-1b(4) Field Duplicates

29 Field duplicate samples shall be collected sequentially and in accordance with Table B1-1 to  
30 assess the precision with which the sampling procedure can collect samples into SUMMA® or  
31 equivalent canisters. Field duplicates will also serve as a measure of analytical precision for the  
32 on-line sampling system. Field duplicate results shall be acceptable if the relative percent  
33 difference is less than or equal to 25 for each tested compound found in concentrations greater  
34 than the PRQL in both duplicates.

#### 35 B1-1c Equipment Testing, Inspection and Maintenance

36 All sampling equipment components that come into contact with headspace sample gases shall  
37 be constructed of relatively inert materials such as stainless steel or Teflon®. A passivated  
38 interior surface on the stainless steel components is recommended.

39 To minimize the potential for cross contamination of samples, the headspace sampling manifold  
40 and sample canisters shall be properly cleaned and leak-checked prior to each headspace-gas  
41 sampling event. Procedures used for cleaning and preparing the manifold and sample canisters

1 shall be equivalent to those provided in EPA's Compendium Method TO-14 (EPA 1988).  
2 Cleaning requirements are presented below.

3 B1-1c(1) Headspace-Gas Sample Canister Cleaning

4 SUMMA® or equivalent canisters used in these methods shall be subjected to a rigorous  
5 cleaning and certification procedures prior to use in the collection of any samples. Guidance for  
6 the development of this procedure has been derived from Method TO-14 (EPA 1988). Specific  
7 detailed instructions shall be provided in laboratory standard operating procedures (**SOPs**) for  
8 the cleaning and certification of canisters.

9 Canisters shall be cleaned and certified on an equipment cleaning batch basis. An equipment  
10 cleaning batch is any number of canisters cleaned together at one time using the same cleaning  
11 method. A cleaning system, capable of processing multiple canisters at a time, composed of an  
12 oven (optional) and a vacuum manifold which uses a dry vacuum pump or a cryogenic trap  
13 backed by an oil sealed pump shall be used to clean SUMMA® or equivalent canisters. Prior to  
14 cleaning, a positive or negative pressure leak test shall be performed on all canisters. The  
15 duration of the leak test must be greater than or equal to the time it takes to collect a sample,  
16 but no greater than 24 hours. For a leak test, a canister passes if the pressure does not change  
17 by a rate greater than  $\pm 2$  psig per 24 hours. Any canister that fails shall be checked for leaks,  
18 repaired, and reprocessed. One canister per equipment cleaning batch shall be filled with humid  
19 zero air or humid high purity nitrogen and analyzed for VOCs. The equipment cleaning batch of  
20 canisters shall be considered clean if there are no VOCs above three times the MDLs listed in  
21 Table B3-2 of Permit Attachment B3. After the canisters have been certified for leak-tightness  
22 and found to be free of background contamination, they shall be evacuated to 0.0039 in. (0.10  
23 mm) Hg or less for storage prior to shipment. The Permittees shall require the laboratory  
24 responsible for canister cleaning and certification to maintain canister certification  
25 documentation and initiate the canister tags as described in Permit Attachment B3.

26 B1-1c(2) Sampling Equipment Initial Cleaning and Leak Check

27 The surfaces of all headspace-gas sampling equipment components that will come into contact  
28 with headspace gas shall be thoroughly inspected and cleaned prior to assembly. The manifold  
29 and associated sampling heads shall be purged with humidified zero air, nitrogen, or helium,  
30 and leak checked after assembly. This cleaning shall be repeated if the manifold and/or  
31 associated sampling heads are contaminated to the extent that the routine system cleaning is  
32 inadequate.

33 B1-1c(3) Sampling Equipment Routine Cleaning and Leak Check

34 The manifold and associated sampling heads which are reused shall be cleaned and checked  
35 for leaks in accordance with the cleaning and leak check procedures described in EPA's  
36 Compendium Method TO-14 (EPA 1988). The procedures shall be conducted after headspace  
37 gas and field duplicate collection; after field blank collection, after field blanks are collected  
38 through the manifold; and after the additional cleaning required for field reference standard  
39 collection has been completed. The protocol for routine manifold cleaning and leak check  
40 requires that sample canisters be attached to the canister ports, or that the ports be capped or  
41 closed by valves, and requires that the sampling head be attached to the purge assembly.

1 VOCs shall be removed from the internal surfaces of the headspace sampling manifold to levels  
2 that are less than or equal to three times the MDLs of the analytes listed in Table B3-2 of Permit  
3 Attachment B3, as determined by analysis of an equipment blank or through use of an OVA. It is  
4 recommended that the headspace sampling manifold be heated to 150° Centigrade and  
5 periodically evacuated and flushed with humidified zero air, nitrogen, or helium. When not in  
6 use, the manifold shall be demonstrated clean before storage with a positive pressure of high  
7 purity gas (i.e., zero air, nitrogen, or helium) in both the standard and sample sides.

8 Sampling shall be suspended and corrective actions shall be taken when the analysis of an  
9 equipment blank indicates that the VOC limits have been exceeded or if a leak test fails. The  
10 Permittees shall require the site project manager to ensure that corrective action has been  
11 taken prior to resumption of sampling.

#### 12 B1-1c(4) Manifold Cleaning After Field Reference Standard Collection

13 The sampling system shall be specially cleaned after a field reference standard has been  
14 collected, because the field reference standard gases contaminate the standard side of the  
15 headspace sampling manifold when they are regulated through the purge assembly. This  
16 cleaning requires the installation of a gas-tight connector in place of the sampling head,  
17 between the flexible hose and the purge assembly. This configuration allows both the sample  
18 and standard sides of the sampling system to be flushed (evacuated and pressurized) with  
19 humidified zero air, nitrogen, or helium which, combined with heating the pneumatic lines,  
20 should sweep and adequately clean the system's internal surfaces. After this protocol has been  
21 completed and prior to collecting another sample, the routine system cleaning and leak check  
22 (see previous section) shall also be performed.

#### 23 B1-1c(5) Sampling Head Cleaning

24 To prevent cross contamination, the needle, airtight fitting or airtight seal, adapters, and filter of  
25 the sampling heads shall be cleaned in accordance with the cleaning procedures described in  
26 EPA's Compendium Method TO-14 (EPA 1988). After sample collection, a sampling head shall  
27 be disposed of or cleaned in accordance with EPA's Compendium Method TO-14 (EPA 1988),  
28 prior to reuse. As a further QC measure, the needle, airtight fitting or airtight seal, and filter,  
29 after cleaning, should be purged with zero air, nitrogen, or helium and capped for storage to  
30 prevent sample contamination by VOCs potentially present in ambient air.

#### 31 B1-1d Equipment Calibration and Frequency

32 The manifold pressure sensor shall be certified prior to initial use, then annually, using NIST  
33 traceable, or equivalent, standards. If necessary, the pressure indicated by the pressure  
34 sensor(s) shall be temperature compensated. The ambient air temperature sensor, if present,  
35 shall be certified prior to initial use, then annually, to NIST traceable, or equivalent, temperature  
36 standards.

37 The OVA shall be calibrated once per day, prior to first use, or as necessary according to the  
38 manufacturer's specifications. Calibration gases shall be certified to contain known analytes  
39 from Table B3-2 of Permit Attachment B3 at known concentrations. The balance of the OVA

1 calibration gas shall be consistent with the manifold purge gas when the OVA is used (i.e., zero  
2 air, nitrogen, or helium).

3 **B1-2 Sampling of Homogeneous Solids and Soil/Gravel (Summary Categories S3000/S4000)**

4 **For those waste streams without an AK Sufficiency Determination approved by the Permittees,**  
5 **randomly selected containers of homogeneous solid and/or soil/gravel waste streams**  
6 **(S3000/S4000) shall be sampled and analyzed to resolve the assignment of EPA hazardous**  
7 **waste numbers. For example, analytical results may be useful to resolve uncertainty regarding**  
8 **hazardous constituents used in a process that generated the waste stream when the hazardous**  
9 **constituents are not documented in the acceptable knowledge information for the waste.**

10 **B1-2a Method Requirements**

11 The methods used to collect samples of transuranic (TRU) mixed waste, classified as  
12 homogeneous solids and soil/gravel from waste containers, shall be such that the samples are  
13 representative of the waste from which they were taken. To minimize the quantity of  
14 investigation-derived waste, laboratories conducting the analytical work may require no more  
15 sample than is required for the analysis, based on the analytical methods. However, a sufficient  
16 number of samples shall be collected to adequately represent waste being sampled. For those  
17 waste streams defined as Summary Category Groups S3000 or S4000 in Attachment B, debris  
18 that may also be present within these wastes need not be sampled.

19 Samples of retrievably stored waste containers will be collected using appropriate coring  
20 equipment or other EPA approved methods to collect a representative sample. Newly generated  
21 wastes that are sampled from a process as it is generated may be sampled using EPA  
22 approved methods, including scoops and ladles, that are capable of collecting a representative  
23 sample. All sampling and core sampling will comply with the QC requirements specified in B1-  
24 2b.

25 **B1-2a(1) Core Collection**

26 Coring tools shall be used to collect cores of homogeneous solids and soil/gravel from waste  
27 containers, when possible, in a manner that minimizes disturbance to the core. A rotational  
28 coring tool (i.e., a tool that is rotated longitudinally), similar to a drill bit, to cut, lift the waste  
29 cuttings, and collect a core from the bore hole, shall be used to collect sample cores from waste  
30 containers. For homogeneous solids and soil/gravel that are relatively soft, non-rotational coring  
31 tools may be used in lieu of a rotational coring tool.

32 To provide a basis for describing the requirements for core collection, diagrams of a rotational  
33 coring tool (i.e., a light weight auger) and a non-rotational coring tool (i.e., a thin-walled sampler)  
34 are provided in Figures B1-5 and B1-6, respectively.

35 The following requirements apply to the use of coring tools:

- 36 C Each coring tool shall contain a removable tube (liner) that is constructed of fairly  
37 rigid material unlikely to affect the composition and/or concentrations of target  
38 analytes in the sample core. Materials that are acceptable for use for coring

1 device sleeves are polycarbonate, teflon, or glass for most samples, and  
2 stainless steel or brass if samples are not to be analyzed for metals. The  
3 Permittees shall require site quality assurance project plans (**QAPjPs**) to  
4 document that analytes of concern are not present in liner material. The  
5 Permittees shall also require sites to document that the materials are unlikely to  
6 affect sample results through the collection and analysis of an equipment blank  
7 prior to first use as specified in the 'Equipment Blanks' section of this appendix.  
8 Liner outer diameter is recommended to be no more than 2 in. and no less than  
9 one in. Liner wall thickness is recommended to be no greater than 1/16 in. Before  
10 use, the liner shall be cleaned in accordance the requirements in Section B1-2b.  
11 The liner shall fit flush with the inner wall of the coring tool and shall be of  
12 sufficient length to hold a core that is representative of the waste along the entire  
13 depth of the waste. The depth of the waste is calculated as the distance from the  
14 top of the sludge to the bottom of the drum (based on the thickness of the liner  
15 and the rim at the bottom of the drum). The liner material shall have sufficient  
16 transparency to allow visual examination of the core after sampling. If sub-  
17 sampling is not conducted immediately after core collection and liner extrusion,  
18 then end caps constructed of material unlikely to affect the composition and/or  
19 concentrations of target analytes in the core (e.g., Teflon®) shall be placed over  
20 the ends of the liner. End caps shall fit tightly to the ends of the liner. The  
21 Permittees shall require site specific QAPjPs to indicate the acceptable materials  
22 for core liners and end caps.

23 C A spring retainer, similar to that illustrated in Figures B1-5 and B1-6, shall be  
24 used with each coring tool when the physical properties of the waste are such  
25 that the waste may fall out of the coring tool's liner during sampling activities. The  
26 spring retainer shall be constructed of relatively inert material (e.g., stainless  
27 steel or Teflon®) and its inner diameter shall not be less than the inner diameter  
28 of the liner. Before use, spring retainers shall be cleaned in accordance with the  
29 requirements in Section B1-2b.

30 C Coring tools may have an air-lock mechanism that opens to allow air inside the  
31 liners to escape as the tool is pressed into the waste (e.g., ball check valve). If  
32 used, this air-lock mechanism shall also close when the core is removed from the  
33 waste container.

34 C After disassembling the coring tool, a device (extruder) to forcefully extrude the  
35 liner from the coring tool shall be used if the liner does not slide freely. All  
36 surfaces of the extruder that may come into contact with the core shall be  
37 cleaned in accordance with the requirements in Section B1-2(b) prior to use.

38 C Coring tools shall be of sufficient length to hold the liner and shall be constructed  
39 to allow placement of the liner leading edge as close as possible to the coring  
40 tools leading edge.

41 C All surfaces of the coring tool that have the potential to contact the sample core  
42 or sample media shall be cleaned in accordance with the requirements in Section  
43 B1-2(b) prior to use.

- 1 C The leading edge of the coring tools may be sharpened and tapered to a  
2 diameter equivalent to, or slightly smaller than, the inner diameter of the liner to  
3 reduce the drag of the homogeneous solids and soil/gravel against the internal  
4 surfaces of the liner, thereby enhancing sample recovery.
- 5 C Rotational coring tools shall have a mechanism to minimize the rotation of the  
6 liner inside the coring tool during coring activities, thereby minimizing physical  
7 disturbance to the core.
- 8 C Rotational coring shall be conducted in a manner that minimizes transfer of  
9 frictional heat to the core, thereby minimizing potential loss of VOCs.
- 10 C Non-rotational coring tools shall be designed such that the tool's kerf width is  
11 minimized. Kerf width is defined as one-half of the difference between the outer  
12 diameter of the tool and the inner diameter of the tool's inlet.

13 **B1-2a(2) Sample Collection**

14 Sampling of cores shall be conducted in accordance with the following requirements:

- 15 C Sampling shall be conducted as soon as possible after core collection. If a  
16 substantial delay (i.e., more than 60 minutes) is expected between core  
17 collection and sampling, the core shall remain in the liner and the liner shall be  
18 capped at each end. If the liner containing the core is not extruded from the  
19 coring tool and capped, then two alternatives are permissible: 1) the liner shall be  
20 left in the coring tool and the coring tool shall be capped at each end, or 2) the  
21 coring tool shall remain in the waste container with the air-lock mechanism  
22 attached.
- 23 C Samples of homogeneous solids and soil/gravel for VOC analyses shall be  
24 collected prior to extruding the core from the liner. These samples may be  
25 collected by collecting a single sample from the representative subsection of the  
26 core, or three sub-samples may be collected from the vertical core to form a  
27 single 15-gram composite sample. Smaller sample sizes may be used if method  
28 PRQL requirements are met for all analytes. The sampling locations shall be  
29 randomly selected. If a single sample is used, the representative subsection is  
30 chosen by randomly selecting a location along the portion of the core (i.e. core  
31 length). If the three sub-sample method is used, the sampling locations shall be  
32 randomly selected within three equal-length subsections of the core along the  
33 long axis of the liner and access to the waste shall be gained by making a  
34 perpendicular cut through the liner and the core. The Permittees shall require  
35 sites to develop documented procedures to select, and record the selection, of  
36 random sampling locations. True random sampling involves the proper use of  
37 random numbers for identifying sampling locations. The procedures used to  
38 select the random sampling locations will be subject to review as part of annual  
39 audits by the Permittees. A sampling device such as the metal coring cylinder  
40 described in EPA's SW-846 Manual (1996), or equivalent, shall be immediately  
41 used to collect the sample once the core has been exposed to air. Immediately



1 after sample collection, the sample shall be extruded into 40-ml volatile organics  
2 analysis (**VOA**) vials (or other containers specified in appropriate SW-846  
3 methods), the top rim of the vial visually inspected and wiped clean of any waste  
4 residue, and the vial cap secured. Sample handling requirements are outlined in  
5 Table B1-4. Additional guidance for this type of sampling can be found in SW-  
6 846 (EPA 1996).

7 C Samples of the homogeneous solids and soil/gravel for semi-volatile organic  
8 compound and metals analyses shall be collected. These samples may be  
9 collected from the same sub-sample locations and in the same manner as the  
10 sample collected for VOC analysis, or they may be collected by splitting or  
11 compositing the representative subsection of the core. The representative  
12 subsection is chosen by randomly selecting a location along the portion of the  
13 core (i.e. core length). The Permittees shall require sites to develop documented  
14 procedures to select, and record the selection, of random sampling locations.  
15 True random sampling involves the proper use of random numbers for identifying  
16 sampling locations. The procedures used to select the random sampling  
17 locations will be subject to review as part of annual audits by the Permittees.  
18 Guidance for splitting and compositing solid materials can be found in SW-846  
19 (EPA 1996). All surfaces of the sampling tools that have the potential to come  
20 into contact with the sample shall be constructed of materials unlikely to affect  
21 the composition or concentrations of target analytes in the waste (e.g., Teflon®).  
22 In addition, all surfaces that have the potential to come into contact with core  
23 sample media shall either be disposed or decontaminated according to the  
24 procedures found in Section B1-2(b). Sample sizes and handling requirements  
25 are outlined in Table B1-4.

26 Newly generated waste samples may be collected using methods other than coring, as  
27 discussed in Section B1-2a. Newly generated wastes samples will be collected as soon as  
28 possible after sampling, but the spatial and temporal homogeneity of the waste stream dictate  
29 whether a representative grab sample or composite sample shall be collected. As part of the  
30 site audit, the Permittees shall assess waste sampling to ensure collection of representative  
31 samples.

#### 32 B1-2b Quality Control

33 QC requirements for sampling of homogeneous solids and soil/gravel include collecting co-  
34 located samples from cores or other sample types to determine precision; equipment blanks to  
35 verify cleanliness of the sampling and coring tools and sampling equipment; and analysis of  
36 reagent blanks to ensure reagents, such as deionized or high pressure liquid chromatography  
37 (**HPLC**) water, are of sufficient quality. Coring and sampling of homogeneous solids and  
38 soil/gravel shall comply, at minimum, with the following QC requirements.

#### 39 B1-2b(1) Co-located Samples

40 In accordance with the requirement to collect field duplicates required by the **Environmental**  
41 **Protection Agency (EPA)** methods found in SW-846 (EPA 1996), samples shall be collected to  
42 determine the combined precision of the coring and sampling procedures. The co-located core

1 methodology is a duplicate sample collection methodology intended to collect samples from a  
2 second core placed at approximately the same location within the drum when samples are  
3 collected by coring. Waste may not be amenable to coring in some instances. In this case, a co-  
4 located sample may be collected from a sample (e.g. scoop) collected from approximately the  
5 same location in the waste stream. A sample from each co-located core or waste sample  
6 collected by other means shall be collected side by side as close as feasible to one another,  
7 handled in the same manner, visually inspected through the transparent liner (if cored), and  
8 sampled in the same manner at the same randomly selected sample location(s). If the visual  
9 examination detects inconsistencies such as color, texture, or waste type in the waste at the  
10 sample location, another sampling location may be randomly selected, or the samples may be  
11 invalidated and co-located samples or cores may again be collected. Co-located samples, from  
12 either core or other sample type, shall be collected at a frequency of one per sampling batch or  
13 once per week, whichever is more frequent. A sampling batch is a suite of homogeneous solids  
14 and soil/gravel samples collected consecutively using the same sampling equipment within a  
15 specific time period. A sampling batch can be up to 20 samples (excluding field QC samples),  
16 all of which shall be collected within 14 days of the first sample in the batch.

#### 17 B1-2b(2) Equipment Blanks

18 In accordance with SW-846 (EPA 1996), equipment blanks shall be collected from fully  
19 assembled sampling and coring tools (i.e., at least those portions of the sampling equipment  
20 that contact the sample) prior to first use after cleaning at a frequency of one per equipment  
21 cleaning batch. An equipment cleaning batch is the number of sampling equipment items  
22 cleaned together at one time using the same cleaning method. The equipment blank shall be  
23 collected from the fully assembled sampling or coring tool, in the area where the sampling or  
24 coring tools are cleaned, prior to covering with protective wrapping and storage. The equipment  
25 blank shall be collected by pouring clean water (e.g., deionized water, HPLC water) down the  
26 inside of the assembled sampling or coring tool. The water shall be collected in a clean sample  
27 container placed at the leading edge of the sampling or coring tool and analyzed for the  
28 analytes listed in Tables B3-4, B3-6, and B3-8 of Permit Attachment B3. The results of the  
29 equipment blank will be considered acceptable if the analysis indicates no analyte at a  
30 concentration greater than three times the MDLs listed in Tables B3-4 and B3-6 or in the  
31 Program Required Detection Limits (**PRDL**) in Table B3-8 of Permit Attachment B3. If analytes  
32 are detected at concentrations greater than three times the MDLs (or PRDLs for metals), then  
33 the associated equipment cleaning batch of sampling or coring tools shall be cleaned again and  
34 another equipment blank collected. Equipment from an equipment cleaning batch may not be  
35 used until analytical results have been received verifying an adequately low level of  
36 contamination in the equipment blank.

37 Equipment blanks for coring tools shall be collected from liners that are cleaned separately from  
38 the coring tools. These equipment blanks shall be collected at a frequency of one per  
39 equipment cleaning batch. The equipment blanks shall be collected by randomly selecting a  
40 liner from the equipment cleaning batch, pouring clean water (e.g., deionized water or HPLC  
41 water) across its internal surface, collecting the water in a clean sample container, and  
42 analyzing the water for the analytes listed in Tables B3-4, B3-6, and the PRDLs in Table B3-8 of  
43 Permit Attachment B3. The results of the equipment blank analysis will be considered  
44 acceptable if the results indicate no analyte at a concentration greater than three times the  
45 MDLs listed in Tables B3-4, B3-6, or B3-8 of Permit Attachment B3. If analytes are detected at

1 concentrations greater than three times the MDLs (or PRDLs for metals), then the associated  
2 equipment cleaning batch of liners shall be cleaned again and another equipment blank  
3 collected. Equipment from an equipment cleaning batch may not be used until analytical results  
4 have been received verifying an adequately low level of contamination in the equipment blank.

5 Sampling equipment (e.g., bowls, spoons, chisel, VOC sub-sampler) shall also be cleaned.  
6 Equipment blanks shall be collected for the sampling equipment at a frequency of one per  
7 equipment cleaning batch. After the sampling equipment has been cleaned, one item from the  
8 equipment cleaning batch is randomly selected, water (e.g., deionized water, HPLC water) is  
9 passed over its surface, collected in a clean container, and analyzed for the analytes listed in  
10 Tables B3-4, B3-6, and B3-8 of Permit Attachment B3. The results of the equipment blank will  
11 be considered acceptable if the results indicate no analyte present at a concentration greater  
12 than three times the MDLs listed in Tables B3-4 and B3-6 and in the PRDLs in B3-8 of Permit  
13 Attachment B3. If analytes are detected at concentrations greater than three times the MDLs (or  
14 PRDLs for metals), then the associated equipment cleaning batch of sampling equipment shall  
15 be cleaned again and another equipment blank collected. Equipment from an equipment  
16 cleaning batch may not be used until analytical results have been received verifying an  
17 adequately low level of contamination in the equipment blank. The above equipment blanks may  
18 be performed on a purchased batch basis for sampling equipment purchased sterile and sealed  
19 in protective packaging. Equipment blanks need not be performed for equipment purchased in  
20 sealed protective packaging accompanied by a certificate certifying cleanliness.

21 The results of equipment blanks shall be traceable to the items in the equipment cleaning batch  
22 that the equipment blank represents. All sampling items should be identified, and the associated  
23 equipment cleaning batch should be documented. The method of documenting the connection  
24 between equipment and equipment cleaning batches shall be documented. Equipment blank  
25 results for the coring tools, liners, and sampling equipment shall be reviewed prior to use. A  
26 sufficient quantity of these items should be maintained in storage to prevent disruption of  
27 sampling operations.

28 The Permittees may require a site to use certified clean disposable sampling equipment and  
29 discard liners and sampling tools after one use. In this instance, cleaning and equipment blank  
30 collection is not required.

### 31 B1-2b(3) Coring Tool and Sampling Equipment Cleaning

32 Coring tools and sampling equipment shall be cleaned in accordance with the following  
33 requirements:

34 C All surfaces of coring tools and sampling equipment that will come into contact  
35 with the samples shall be clean prior to use. All sampling equipment shall be  
36 cleaned in the same manner. Immediately following cleaning, coring tools and  
37 sampling equipment shall be assembled and sealed inside clean protective  
38 wrapping.

39 C Each reusable sampling or coring tool shall have a unique identification number.  
40 Each number shall be referenced to the waste container on which it was used.  
41 This information shall be recorded in the field records. One sampling or coring

1 tool from each equipment cleaning batch shall be tested for cleanliness in  
2 accordance with the requirements specified above. The identification number of  
3 the sampling or coring tool from which the equipment blank was collected shall  
4 be recorded in the field records. The results of the equipment blank analysis for  
5 the equipment cleaning batch in which each sampling or coring tool was cleaned  
6 shall be submitted to the sampling facility with the identification numbers of all  
7 sampling or coring tools in the equipment cleaning batch. If analytes are detected  
8 at concentrations greater than three times the MDLs (or PRDLs for metals), then  
9 the associated equipment cleaning batch of sampling equipment shall be cleaned  
10 again and another equipment blank collected. Equipment from an equipment  
11 cleaning batch may not be used until analytical results have been received  
12 verifying an adequately low level of contamination in the equipment blank.

13 C Sample containers shall be cleaned in accordance with SW-846 (EPA 1996).

#### 14 B1-2c Equipment Testing, Inspection and Maintenance

15 Prior to initiation of sampling or coring activities, sampling and coring tools shall be tested in  
16 accordance with manufacturer specifications to ensure operation within the manufacturer's  
17 tolerance limits. Other specifications specific to the sampling operations (e.g., operation of  
18 containment structure and safety systems) should also be tested and verified as operating  
19 properly prior to initiating coring activities. Coring tools shall be assembled, including liners, and  
20 tested. Air-lock mechanisms and rotation mechanisms shall be inspected for free movement of  
21 critical parts. Sampling and coring tools found to be malfunctioning shall be repaired or replaced  
22 prior to use.

23 Coring tools and sample collection equipment shall be maintained in accordance with  
24 manufacturer's specifications. Clean sampling and coring tools and sampling equipment shall  
25 be sealed inside clean protective wrapping and maintained in a clean storage area prior to use.  
26 Sampling equipment shall be properly maintained to avoid contamination. A sufficient supply of  
27 spare parts should be maintained to prevent delays in sampling activities due to equipment  
28 down time. Records of equipment maintenance and repair shall be maintained in the field  
29 records in accordance with site SOPs.

30 Inspection of sampling equipment and work areas shall include the following:

31 C Sample collection equipment in the immediate area of sample collection shall be  
32 inspected daily for cleanliness. Visible contamination on any equipment (e.g.,  
33 waste on floor of sampling area, hydraulic fluid from hoses) that has the potential  
34 to contaminate a waste core or waste sample shall be thoroughly cleaned upon  
35 its discovery.

36 C The waste coring and sampling work areas shall be maintained in clean condition  
37 to minimize the potential for cross contamination between waste (including cores)  
38 and samples.

39 C Expendable equipment (e.g., plastic sheeting, plastic gloves) shall be visually  
40 inspected for cleanliness prior to use and properly discarded after each sample.

- 1 C Prior to removal of the protective wrapping from a coring tool designated for use,  
2 the condition of the protective wrapping shall be visually assessed. Coring tools  
3 with torn protective wrapping should be returned for cleaning. Coring tools visibly  
4 contaminated after the protective wrapping has been removed shall not be used  
5 and shall be returned for cleaning or properly discarded.
- 6 C Sampling equipment shall be visually inspected prior to use. All sampling  
7 equipment that comes into contact with waste samples shall be stored in  
8 protective wrapping until use. Prior to removal of the protective wrapping from  
9 sampling equipment, the condition of the protective wrapping shall be visually  
10 assessed. Sampling equipment with torn protective wrapping should be  
11 discarded or returned for cleaning. Sampling equipment visibly contaminated  
12 after the protective wrapping has been removed shall not be used and shall be  
13 returned for cleaning or properly discarded.
- 14 C Cleaned sampling and coring equipment will be physically segregated from all  
15 equipment that has been used for a sampling event and has not been  
16 decontaminated.

#### 17 B1-2d Equipment Calibration and Frequency

18 The scale used for weighing sub-samples shall be calibrated as necessary to maintain its  
19 operation within manufacturer's specification, and after repairs and routine maintenance.  
20 Weights used for calibration shall be traceable to a nationally recognized standard. Calibration  
21 records shall be maintained in the field records.

#### 22 B1-3 Radiography

##### 23 B1-3a Methods Requirements

24 Radiography has been developed by the Permittees specifically to aid in the examination and  
25 identification of containerized waste. The Permittees shall require that sites describe all  
26 activities required to achieve the radiography objectives in site QAPjPs and SOPs. These SOPs  
27 should include instructions specific to the radiography system(s) used at the site. For example,  
28 to detect liquids, some systems require the container to be rotated back and forth while other  
29 systems require the container to be tilted.

30 A radiography system (e.g., real time radiography, digital radiography/computed tomography)  
31 normally consists of an X-ray-producing device, an imaging system, an enclosure for radiation  
32 protection, a waste container handling system, an audio/video recording system, and an  
33 operator control and data acquisition station. Although these six components are required, it is  
34 expected there will be some variation within a given component between sites. The radiography  
35 system shall have controls or an equivalent process which allow the operator to control image  
36 quality. On some radiography systems, it should be possible to vary the voltage, typically  
37 between 150 to 400 kilovolts (kV), to provide an optimum degree of penetration through the  
38 waste. For example, high-density material should be examined with the X-ray device set on the  
39 maximum voltage. This ensures maximum penetration through the waste container. Low-density  
40 material should be examined at lower voltage settings to improve contrast and image definition.

1 The imaging system typically utilizes either a fluorescent screen and a low-light television  
2 camera or x-ray detectors to generate the image.

3 To perform radiography, the waste container is scanned while the operator views the television  
4 screen. ~~An audio/videotape or equivalently non-alterable media~~ A video and audio recording is  
5 made of the waste container scan and is maintained as a non-permanent record. A radiography  
6 data form is also used to document the Waste Matrix Code and estimated waste material  
7 parameter weights of the waste. The estimated waste material parameter and weights should  
8 be determined by compiling an inventory of waste items, residual materials, and packaging  
9 materials. The items on this inventory should be sorted by waste material parameter and  
10 combined with a standard weight look-up table to provide an estimate of waste material  
11 parameter weights, ensure that the waste container contains no ignitable, corrosive, or reactive  
12 waste by documenting the absence of liquids in excess of TSDF-WAC limits or compressed  
13 gases, and verify that the physical form of the waste is consistent with the waste stream  
14 description documented on the WSPF. Containers whose contents prevent full examination of  
15 the remaining contents shall be subject to visual examination unless the site certifies that visual  
16 examination would provide no additional relevant information for that container based on the  
17 acceptable knowledge information for the waste stream. Such certification shall be documented  
18 in the generator/storage site's record.

19 For containers which contain classified shapes and undergo radiography, the radiography-tape  
20 video and audio recording will be considered classified. The radiography data forms will not be  
21 considered classified.

#### 22 ~~B1-3b~~ Quality Control

23 The radiography system involves qualitative and semiquantitative evaluations of visual displays.  
24 Operator training and experience are the most important considerations for assuring ensuring  
25 quality controls in regard to the operation of the radiography system and for interpretation and  
26 disposition of radiography results. Only trained personnel shall be allowed to operate  
27 radiography equipment.

28 Standardized training requirements for radiography operators shall be based upon existing  
29 industry standard training requirements and shall comply with the training and qualification  
30 requirements stipulated in this WAP.

31 The Permittees shall require each site to develop a training program that provides radiography  
32 operators with both formal and on-the-job (OJT) training. Radiography operators shall be  
33 instructed in the specific waste generating practices, typical packaging configurations, and  
34 associated waste material parameters expected to be found in each Waste Matrix Code at the  
35 site. The OJT and apprenticeship shall be conducted by an experienced, qualified radiography  
36 operator prior to qualification of the training candidate. The training programs will be site-  
37 specific due to differences in equipment, waste configurations, and the level of waste  
38 characterization efforts. For example, certain sites use digital radiography equipment, which is  
39 more sensitive than real-time radiography equipment. In addition, the particular physical forms  
40 and packaging configurations at each site will vary; therefore, radiography operators shall be  
41 trained on the types of waste that are generated, stored, and/or characterized at that particular  
42 site.

1 Although the Permittees shall require each site to develop its own training program, all of the  
2 radiography QC requirements specified in this ~~Waste Analysis Plan (WAP)~~ shall be incorporated  
3 into the training programs and radiography operations. In this way data quality and  
4 comparability will not be affected.

5 Radiography training programs will be the subject of the Permittees' Audit and Surveillance  
6 Program (Permit Attachment B6).

7 Although the site-specific training programs will vary to some degree, the Permittees shall  
8 require each site's program to contain the following required elements based on the following  
9 requirements:

10 B1-3b(1) Formal Training

- 11 ~~\_\_\_\_\_ C \_\_\_\_\_ Project Requirements~~
- 12 ~~\_\_\_\_\_ C \_\_\_\_\_ State and Federal Regulations~~
- 13 ~~\_\_\_\_\_ C \_\_\_\_\_ Basic Principles of Radiography~~
- 14 ~~\_\_\_\_\_ C \_\_\_\_\_ Radiographic Image Quality~~
- 15 ~~\_\_\_\_\_ C \_\_\_\_\_ Radiographic Scanning Techniques~~
- 16 ~~\_\_\_\_\_ C \_\_\_\_\_ Application Techniques~~
- 17 ~~\_\_\_\_\_ C \_\_\_\_\_ Radiography of Waste Forms~~
- 18 ~~\_\_\_\_\_ C \_\_\_\_\_ Standards, Codes, and Procedures for Radiography~~
- 19 ~~\_\_\_\_\_ C \_\_\_\_\_ Site-Specific Instruction~~
- 20 \_\_\_\_\_

21 B1-3b(2) On-the-Job Training

- 22 ~~\_\_\_\_\_ C \_\_\_\_\_ System Operation~~
- 23 ~~\_\_\_\_\_ C \_\_\_\_\_ Identification of Packaging Configurations~~
- 24 ~~\_\_\_\_\_ C \_\_\_\_\_ Identification of Waste Material Parameters~~
- 25 ~~\_\_\_\_\_ C \_\_\_\_\_ Weight and Volume Estimation~~
- 26 ~~\_\_\_\_\_ C \_\_\_\_\_ Identification of Prohibited Items~~
- 27 \_\_\_\_\_

28 A radiography test drum shall include items common to the waste streams to be  
29 generated/stored at the generator/storage site. The test drums shall be divided into layers with  
30 varying packing densities or different drums may be used to represent different situations that  
31 may occur during radiography examination at the site. Test drums representative of the waste  
32 matrix codes for which Waste Stream Profile Form approval is sought must be examined and  
33 successfully identified prior to waste stream shipment. The following is a list of required  
34 elements of a radiography test drum(s):

- 35 ~~\_\_\_\_\_ C \_\_\_\_\_ Aerosol can with puncture~~
- 36 ~~\_\_\_\_\_ C \_\_\_\_\_ Horsetail bag~~
- 37 ~~\_\_\_\_\_ C \_\_\_\_\_ Pair of coveralls~~
- 38 ~~\_\_\_\_\_ C \_\_\_\_\_ Empty bottle~~
- 39 ~~\_\_\_\_\_ C \_\_\_\_\_ Irregular shaped pieces of wood~~
- 40 ~~\_\_\_\_\_ C \_\_\_\_\_ Empty one-gallon paint can~~
- 41 ~~\_\_\_\_\_ C \_\_\_\_\_ Full container~~
- 42 ~~\_\_\_\_\_ C \_\_\_\_\_ Aerosol can with fluid~~

- 1 ~~\_\_\_\_\_ C \_\_\_\_\_ One gallon bottle with three tablespoons of fluid~~
- 2 ~~\_\_\_\_\_ C \_\_\_\_\_ One gallon bottle with one cup of fluid (upside down)~~
- 3 ~~\_\_\_\_\_ C \_\_\_\_\_ Leaded glove or leaded apron~~
- 4 ~~\_\_\_\_\_ C \_\_\_\_\_ Wrench~~

5 ~~These items shall be successfully identified by the operator as part of the qualification process.~~  
6 ~~Qualification of radiography operators shall, at a minimum, encompass the following~~  
7 ~~requirements:~~

- 8 ~~\_\_\_\_\_ C \_\_\_\_\_ Successfully pass a comprehensive exam based upon training enabling~~  
9 ~~objectives. This exam will be reviewed as part of the Permittees' Audit and~~  
10 ~~Surveillance Program (Permit Attachment B6). The comprehensive exam will~~  
11 ~~address all of the Radiography operation, documentation, characterization, and~~  
12 ~~procedural elements stipulated in this WAP.~~
- 13 ~~\_\_\_\_\_ C \_\_\_\_\_ Perform practical capability demonstration in the presence of appointed site~~  
14 ~~radiography subject matter expert. This person is an experienced radiography~~  
15 ~~operator who is qualified as an OJT trainer.~~

16 ~~Requalification of operators shall be based upon evidence of continued satisfactory~~  
17 ~~performance (primarily audio/videotape reviews) and shall be done at least every two years.~~  
18 ~~Unsatisfactory performance will result in disqualification. Unsatisfactory performance is defined~~  
19 ~~as the misidentification of a prohibited item in a training drum or a score of less than 80% on the~~  
20 ~~comprehensive exam. Retraining and demonstration of satisfactory performance are required~~  
21 ~~before a disqualified operator is again allowed to operate the radiography system.~~

22 ~~A training drum with internal container of various sizes shall be scanned biannually by each~~  
23 ~~operator. The audio/ and videotape or equivalent media shall then be reviewed by a supervisor~~  
24 ~~to ensure that operators' interpretations remain consistent and accurate. Imaging system~~  
25 ~~characteristics shall be verified on a routine basis.~~

26 ~~Independent replicate scans and replicate observations of the video output of the radiography~~  
27 ~~process shall be performed under uniform conditions and procedures. Independent replicate~~  
28 ~~scans shall be performed on one waste container per day or once per testing batch, whichever~~  
29 ~~is less frequent. Independent observations of one scan (not the replicate scan) shall also be~~  
30 ~~made once per day or once per testing batch, whichever is less frequent, by a qualified~~  
31 ~~radiography operator other than the individual who performed the first examination. A testing~~  
32 ~~batch is a suite of waste containers undergoing radiography using the same testing equipment.~~  
33 ~~A testing batch can be up to 20 waste containers without regard to waste matrix.~~

34 ~~Oversight functions include periodic audio/video tape reviews of accepted waste containers and~~  
35 ~~shall be performed by qualified radiography personnel other than the operator who~~  
36 ~~disposed the waste container. The results of this independent verification shall be available~~  
37 ~~to the radiography operator. The Permittees shall require the site project QA officer manager to~~  
38 ~~be responsible for monitoring the quality of the radiography data and calling for corrective~~  
39 ~~action, when necessary.~~



1 **B1-3b(3)4 Visual Examination**

2 ~~As an additional QC check, or in~~ In lieu of radiography, the waste container contents ~~shall~~ may  
3 be verified directly by visual examination of the waste container contents. Visual examination  
4 ~~shall~~ **may** be performed on ~~a statistically determined portion of~~ waste containers to verify the  
5 results of radiography. ~~With the exception of items or conditions that could pose a hazard to~~  
6 visual examination personnel, the radiography results ~~shall not be made available until after the~~  
7 visual examination is completed. This verification shall include the Waste Matrix Code and  
8 waste material parameter weights. The verification shall be performed through a comparison of  
9 radiography and visual examination results. ~~The Waste Matrix Code is determined and waste~~  
10 material parameter weights are estimated to verify that the container is properly included in the  
11 appropriate waste stream. ~~The results of the visual examination shall be transmitted to the~~  
12 radiography facility.

13 Visual examination shall be conducted to describe all contents of a waste container, ~~and~~  
14 includes ~~estimated or measured weights of the contents. The description shall clearly identify~~ing  
15 all discernible waste items, residual materials, packaging materials, or waste material  
16 parameters. ~~Visual examination experts who are experienced and trained shall assess the need~~  
17 ~~to open individual bags or packages of waste. If individual bags/packages are not opened,~~  
18 ~~estimated weights shall be recorded. Estimated weights shall be established through the use of~~  
19 ~~historically derived waste weight tables and an estimation of the waste volumes. It may not be~~  
20 ~~possible to see through inner bags because of discoloration, dust, or because inner containers~~  
21 ~~are sealed. In these instances, documented acceptable knowledge may be used to identify the~~  
22 ~~Waste Matrix Code and estimated waste material parameter weights. If acceptable knowledge~~  
23 ~~is insufficient for individual bags/packages, actual weights of waste items, residual materials,~~  
24 ~~packaging materials, or waste material parameters shall be recorded. All visual examination~~  
25 activities shall be documented on video/audio **media, or alternatively, by using a second**  
26 **operator to provide additional verification by reviewing the contents of the waste container to**  
27 **ensure correct reporting.** ~~and the~~ The results of all visual examination shall be documented on  
28 visual examination data forms.

29 **Visual examination recorded on video/audio media shall meet the following minimum**  
30 **requirements:**

- 31 **C The video/audio media shall record the waste packaging event for the container**  
32 **such that all waste items placed into the container are recorded in sufficient**  
33 **detail that another trained visual examination expert can determine what the**  
34 **waste items are and their associated waste material parameter.**
- 35 **C The video/audio media shall capture the waste container identification number.**
- 36 **C The personnel loading the waste container shall be identified on the video/audio**  
37 **media or on packaging records traceable to the loading of the waste container.**
- 38 **C The date of loading of the waste container will be recorded on the video/audio**  
39 **media or on packaging records traceable to the loading of the waste container.**

1 Visual examination performed using two generator site personnel shall meet the following  
2 minimum requirements:

- 3 C At least two generator site personnel shall approve the data forms or packaging  
4 logs attesting to the contents of the waste container.
- 5 C The data forms or packaging logs shall contain an inventory of waste items in  
6 sufficient detail that another trained visual examination expert can identify the  
7 associated waste material parameters.
- 8 C The waste container identification number shall be recorded on the data forms or  
9 packaging logs.

10 Visual examination video ~~tapes~~/audio media of containers which contain classified shapes shall  
11 be considered classified information. Visual examination data forms or packaging logs will not  
12 be considered classified information.

13 ~~The visual examination shall consist of a semi-quantitative and/or qualitative evaluation of the~~  
14 ~~waste container contents, and shall be recorded on audio/videotape. The visual examination~~  
15 ~~program has been developed by the Permittees to provide an acceptable level of confidence in~~  
16 ~~radiography. There is no equivalent method found in EPA sampling and analysis guidance~~  
17 ~~documents. The specific requirements of visual examination are described in this WAP.~~

18 Standardized training for visual inspection shall be developed to include both formal classroom  
19 training and OJT. Visual inspectors shall be instructed in the specific waste generating  
20 processes, typical packaging configurations, and expected waste material parameters expected  
21 to be found in each Waste Matrix Code at the site. ~~The OJT and apprenticeship shall be~~  
22 ~~conducted by an operator experienced and qualified in visual examination prior to qualification~~  
23 ~~of the candidate.~~ The training shall be site specific to include the various waste configurations  
24 generated/stored at the site. For example, the particular physical forms and packaging  
25 configurations at each site will vary so operators shall be trained on types of waste that are  
26 generated, stored, and/or characterized at that particular site. Visual examination personnel  
27 shall be requalified once every two years.

28 ~~Although site-specific training programs will vary to some degree, the Permittees shall require~~  
29 ~~each site's program to contain the following required elements:~~

30 B1-3b(4) Formal Training

- 31 ~~\_\_\_\_\_ C \_\_\_\_\_ Project Requirements~~
- 32 ~~\_\_\_\_\_ C \_\_\_\_\_ State and Federal Regulations~~
- 33 ~~\_\_\_\_\_ C \_\_\_\_\_ Application Techniques~~
- 34 ~~\_\_\_\_\_ C \_\_\_\_\_ Site-Specific Instruction~~

35 B1-3b(5) On-the-Job Training

- 36 ~~\_\_\_\_\_ C \_\_\_\_\_ Identification of Packaging Configurations~~
- 37 ~~\_\_\_\_\_ C \_\_\_\_\_ Identification of Waste Material Parameters~~

- ~~C~~ Weight and Volume Estimation
- ~~C~~ Identification of Prohibited Items

Each visual examination facility shall designate a visual examination expert. The visual examination expert shall be familiar with the waste generating processes that have taken place at that site and also be familiar with all of the types of waste being characterized at that site. The visual examination expert shall be responsible for the overall direction and implementation of the visual examination at that facility. The Permittees shall require site QAPjPs to specify the selection, qualification, and training requirements of the visual examination expert.

~~Figure B1-7 illustrates the overall programmatic approach to the visual examination of waste. If the waste is homogeneous, the expert may decide that a limited visual examination involving a confirmation of the radiography data is appropriate. If the waste is heterogeneous, the expert may decide a full visual examination by opening bags and segregating waste is warranted. Various degrees of segregation are possible based on the expert's judgment and availability of acceptable knowledge data. Site QAPjPs shall specify decision-making criteria for the visual examination expert. In all cases, SOPs shall be developed to support the visual examination process, and the basis for the expert's decisions shall be documented.~~

~~A description of the waste container contents shall be recorded on a data form as implemented in the site QAPjP. The description shall clearly identify all waste material parameters and provide enough information to estimate weights of waste material parameters. In cases where bags are not opened, a brief written description of the contents of the bags shall contain an estimate of the amount of each waste type in the bags. The written records of visual examination shall be supplemented with the audio/video recording.~~

#### B1-45 Custody of Samples

Chain-of-Custody on field samples (including field QC samples) will be initiated immediately after sample collection or preparation. Sample custody will be maintained by ensuring that samples are custody sealed during shipment to the laboratory. After samples are accepted by the analytical laboratory, custody is maintained by assuring the samples are in the possession of an authorized individual, in that individual's view, in a sealed or locked container controlled by that individual, or in a secure controlled access location. Sample custody will be maintained until the sample is released by the site project manager or until the sample is expended. The Permittees shall require that site QAPjPs or site-specific procedures include a copy of the sample chain-of-custody form and instructions for completing sample chain-of-custody forms in a legally defensible manner. This form will include provisions for each of the following:

- C Signature of individual initiating custody control, along with the date and time.
- C Documentation of sample numbers for each sample under custody. Sample numbers will be referenced to a specific sampling event description that will identify the sampler(s) through signature, the date and time of sample collection, type/number containers for each sample, sample matrix, preservatives (if applicable), requested methods of analysis, place/address of sample collection and the waste container number.

- 1           C       For off-site shipping, method of shipping transfer, responsible shipping  
2                   organization or corporation, and associated air bill or lading number.
- 3           C       Signatures of custodians relinquishing and receiving custody, along with date  
4                   and time of the transfer.
- 5           C       Description of final sample container disposition, along with signature of  
6                   individual removing sample container from custody.
- 7           C       Comment section.
- 8           C       Documentation of discrepancies, breakage or tampering.

9       All samples and sampling equipment will be identified with unique identification numbers.  
10      Sampling Coring tools and equipment will be identified with unique equipment numbers to  
11      ensure that all sampling equipment, coring tools, and sampling canisters are traceable to  
12      equipment cleaning batches.

13     All samples will be uniquely identified to ensure the integrity of the sample and can be used to  
14     identify the generator/storage site and date of collection. Sample tags or labels will be affixed to  
15     all samples and will identify at a minimum:

- 16           C       Sample ID number
- 17           C       Sampler initials and organization
- 18           C       Ambient temperature and pressure (for gas samples only)
- 19           C       Sample description
- 20           C       Requested analyses
- 21           C       Data and time of collection
- 22           C       QC designation (if applicable)

### 23     B1-56 Sample Packing and Shipping

24     In the event that the analytical facilities are not at the generator/storage site, the samples shall  
25     be packaged and shipped to an off-site laboratory. Sample containers shall be packed to  
26     prevent any damage to the sampling container and maintain the preservation temperature, if  
27     necessary. Department of Transportation (**DOT**) regulations shall be adhered to for shipment of  
28     the package.

29     When preparing SUMMA® or equivalent canisters for shipment, special care shall be taken with  
30     the pressure gauge and the associated connections. Metal boxes which have separate  
31     compartments, or cardboard boxes with foam inserts are standard shipping containers. The  
32     chosen shipping container shall meet selected DOT regulations. If temperatures shall be  
33     maintained, an adequate number of cold packs necessary to maintain the preservation  
34     temperature shall be added to the package.

35     Glass jars are wrapped in bubble wrap or another type of protection. The wrapped jar should be  
36     placed in a plastic bag inside of the shipping container, so that if the jar breaks, the inside of the  
37     shipping container and the other samples will not be contaminated. The plastic bag will enable

1 the receiving analytical lab to prevent contamination of their shipping and receiving area. Plastic  
2 jars do not present a problem for shipping purposes. All shipping containers will contain  
3 appropriate blank samples to detect any VOC cross-contamination. A DOT approved cooler, or  
4 similar package may be used as the shipping container. If temperatures must be maintained, an  
5 adequate number of cold packs necessary to maintain the preservation temperature shall be  
6 added to the package. If fill material is needed, compatibility between the samples and the fill  
7 should be evaluated prior to use.

8 All sample containers should be affixed with signed tamper-proof seals or devices so that it is  
9 apparent if the sample integrity has been compromised and that the identity of the seal or  
10 device is traceable to the individual who affixed the seal. A seal should also be placed on the  
11 outside of the shipping container for the same reason. Sample custody documentation shall be  
12 placed inside the sealed or locked shipping container, with the current custodian signing to  
13 release custody. Transfer of custody is completed when the receiving custodian opens the  
14 shipping container and signs the custody documentation. The shipping documentation will serve  
15 to track the physical transfer of samples between the two custodians.

16 A Uniform Hazardous Waste Manifest is not required, since samples are exempted from the  
17 definition of hazardous waste under RCRA. All other shipping documentation specified in the  
18 site specific SOP for sample shipment (i.e., bill of lading, site-specific shipping documentation)  
19 is required.

20 **B1-67** List of References

21 Bechtel BWXT Idaho, LLC (BWXT), 2000, Determination of Drum Age Criteria and Prediction  
22 Factors Based on Packaging Configurations, INEEL/EXT-2000-01207, October 2000, Liekhus,  
23 K.J., S.M. Djordjevic, M. Devarakonda, and M.J. Connolly, Idaho National Engineering and  
24 Environmental Laboratory, Idaho Falls, Idaho.

25 Lockheed Idaho Technologies Company, 1995, Position for Determining Gas Phase Volatile  
26 Organic Compound Concentrations in Transuranic Waste Containers, INEL-95/0109/Revision 1,  
27 M.J. Connolly, et. al.

28 U.S. Environmental Protection Agency (EPA), 1988, "Compendium Method TO-14, The  
29 Determination of Volatile Organic Compounds (VOC) in Ambient Air Using SUMMA Passivated  
30 Canister Sampling and Gas Chromatographic Analyses." Compendium of Methods for  
31 Determination of Toxic Organic Compounds in Ambient Air. Research Triangle Park, North  
32 Carolina, Quality Assurance Division, Environmental Monitoring Systems Laboratory, U.S.  
33 Environmental Protection Agency.

34 U.S. Environmental Protection Agency (EPA), 1996. Test Methods for Evaluating Solid Waste,  
35 "Laboratory Manual Physical/Chemical Methods, SW-846, 3rd ed., U.S. EPA, OSW and ER,  
36 Washington D.C.

1

(This page intentionally blank)

1

## **TABLES**

(This page intentionally blank)



1 **TABLE B1-1**

2 **GAS SAMPLE REQUIREMENTS**

3

Parameter	Container <sup>a</sup>	Minimum Drum Headspace Sample Volume <sup>b</sup>	Holding Temperatures
VOCs	SUMMA® Canister	250 ml	0-40 °C

4

5 <sup>a</sup> Alternately, canisters that meet QAOs may be used.

6 <sup>b</sup> Alternatively, if available headspace is limited, a single 100 ml sample may be collected for determination  
7 of VOCs.

**TABLE B1-2**  
**SUMMARY OF DRUM FIELD QC HEADSPACE SAMPLE FREQUENCIES**

QC Samples	Manifold	Direct Canister	On-Line Systems
Field blanks <sup>a</sup>	1 per sampling batch <sup>d</sup>	1 per sampling batch <sup>d</sup>	1 per on-line batch <sup>f</sup>
Equipment blanks <sup>b</sup>	1 per sampling batch <sup>d</sup>	once <sup>e</sup>	1 per on-line batch <sup>f</sup>
Field reference standards <sup>c</sup>	1 per sampling batch <sup>d</sup>	once <sup>e</sup>	1 per on-line batch <sup>f</sup>
Field duplicates	1 per sampling batch <sup>d</sup>	1 per sampling batch <sup>d</sup>	1 per on-line batch <sup>f</sup>

<sup>a</sup> Analysis of field blanks for VOCs (Table B3-2 of Appendix B3), only, is required. For on-line integrated sampling/analysis systems, if field blank results meet the acceptance criterion, a separate on-line blank is not required.

<sup>b</sup> One equipment blank or on-line sample shall be collected, analyzed for VOCs (Table B3-2), and demonstrated clean prior to first use of the headspace gas sampling equipment with each of the sampling heads, then at the specified frequency, for VOCs only thereafter. Daily, prior to work, the sampling manifold, if in use, shall be verified clean using an OVA.

<sup>c</sup> One field reference standard or on-line control sample shall be collected, analyzed, and demonstrated to meet the QAOs specified in Permit Attachment B3 prior to first use, then at the specified frequency thereafter.

<sup>d</sup> A sampling batch is a suite of samples collected consecutively using the same sampling equipment within a specific time period. A sampling batch can be up to 20 samples (excluding field QC samples), all of which shall be collected within 14 days of the first sample in the batch.

<sup>e</sup> One equipment blank and field reference standard shall be collected after equipment purchase, cleaning, and assembly.

<sup>f</sup> An on-line batch is the number of samples collected within a 12-hour period using the same on-line integrated sampling/analysis system. The analytical batch requirements are specified by the analytical method being used in the on-line system.

**TABLE B1-3  
 SUMMARY OF SAMPLING QUALITY CONTROL  
 SAMPLE ACCEPTANCE CRITERIA**

QC Sample	Acceptance Criteria	Corrective Action <sup>a</sup>
Field blanks	VOC amounts < 3 x MDLs in Table B3-2 for GC/MS and GC/FID; < PRQLs in Table B3-2 for FTIRS	Nonconformance if any VOC amount \$ 3 x MDLs in Table B3-2 for GC/MS and GC/FID; \$ PRQLs in Table B3-2 for FTIRS
Equipment blanks	VOC amounts < 3 x MDLs in Table B3-2 of for GC/MS and GC/FID; < PRQLs in Table B3-2 for FTIRS	Nonconformance if any analyte amount \$ 3 x MDLs in Table B3-2 for GC/MS and GC/FID; \$ PRQLs in Table B3-2 for FTIRS
Field reference standards or on-line control sample	70 - 130 %R	Nonconformance if %R < 70 or > 130
Field duplicates or on-line duplicate	RPD # 25	Nonconformance if RPD > 25

<sup>a</sup> Corrective action is only required if the final reported QC sample results do not meet the acceptance criteria.

MDL = Method detection limit

%R = Percent recovery

RPD = Relative percent difference

1  
2  
3  
**TABLE B1-4**  
**SAMPLE HANDLING REQUIREMENTS FOR HOMOGENEOUS**  
**SOLIDS AND SOIL/GRAVEL**

4

Parameter	Suggested Quantity <sup>a</sup>	Required Preservative	Suggested Container	Maximum Holding Time <sup>b</sup>
VOCs	15 grams	Cool to 4°C	Glass Vial <sup>c</sup>	14 Days Prep/ 40 Days Analyze <sup>d</sup>
SVOCs	50 grams	Cool to 4°C	Glass Jar <sup>e</sup>	14 Days Prep/ 40 Days Analyze <sup>d</sup>
Metals	10 grams	Cool to 4°C	Plastic Jar <sup>f</sup>	180 Days <sup>g</sup>

5  
6  
7

8 <sup>a</sup> Quantity may be increased or decreased according to the requirements of the analytical laboratory, as  
9 long as the QAOs are met.

10 <sup>b</sup> Holding time begins at sample collection (holding times are consistent with SW-846 requirements).

11 <sup>c</sup> 40-ml VOA vial or other appropriate containers shall have an airtight cap.

12 <sup>d</sup> 40-day holding time allowable only for methanol extract - 14-day holding time for non-extracted VOCs.

13 <sup>e</sup> Appropriate containers should be used and should have Teflon® lined caps.

14 <sup>f</sup> Polyethylene or polypropylene preferred, glass jar is allowable.

15 <sup>g</sup> Holding time for mercury analysis is 28 days.

16 Note: Preservation requirements in the most recent version of SW-846 may be used if appropriate.

**TABLE B1-5**  
**HEADSPACE GAS DRUM AGE CRITERIA SAMPLING SCENARIOS**

Scenario	Description
1	A. Unvented 55-gallon drums without rigid poly liners are sampled through the drum lid at the time of venting. B1. Unvented 55-gallon drums with unvented rigid poly liners are sampled through the rigid poly liner at the time of venting or prior to venting. B2. Vented 55-gallon drums with unvented rigid poly liners are sampled through the rigid poly liner at the time of venting or prior to venting. C. Unvented 55-gallon drums with vented rigid poly liners are sampled through the drum lid at the time of venting.
2	55-gallon drums that have met the criteria for Scenario 1 and then are vented, but not sampled at the time of venting. <sup>a</sup>
3	Containers (i.e., 55-gallon drums, 85-gallon drums, 100-gallon drums, SWBs, TDOPs, and pipe components) that are initially packaged in a vented condition and sampled in the container headspace and containers that are not sampled under Scenario 1 or 2.

<sup>a</sup> Containers that have not met the Scenario 1 DAC at the time of venting must be categorized under Scenario 3. This requires the additional information required of each container in Scenario 3 (i.e., determination of packaging configuration), and such containers can only be sampled after meeting the appropriate Scenario 3 DAC.

1  
2  
3  
4  
5  
6  
7  
8  
9

**TABLE B1-6**  
**SCENARIO 1 DRUM AGE CRITERIA (in days) MATRIX**

Summary Category Group	DAC (days)
S3000/S4000	127
S5000	53

Note: Containers that are sampled using the Scenario 1 DAC do not require information on the packaging configuration because the Scenario 1 DAC are based on a bounding packaging configuration. In addition, information on the rigid liner vent hole presence and diameter do not apply to containers that are sampled using the Scenario 1 DAC because they are unvented prior to sampling.

**TABLE B1-7**  
**SCENARIO 2 DRUM AGE CRITERIA (in days) MATRIX**

	Summary Category Group S3000/S4000				Summary Category Group S5000			
Filter H <sub>2</sub> Diffusivity <sup>a</sup>	Rigid Liner Vent Hole Diameter (in)				Rigid Liner Vent Hole Diameter (in)			
(mol/s/mod fraction)	0.30	0.375	0.75	1.0	0.30	0.375	0.75	1.0
1.9 x 10 <sup>-6</sup>	36	30	23	22	29	22	13	12
3.7 x 10 <sup>-6</sup>	30	25	19	18	25	20	12	11
3.7 x 10 <sup>-5</sup>	13	11	11	11	7	6	6	4

<sup>a</sup> The documented filter H<sub>2</sub> diffusivity must be greater than or equal to the listed value to use the DAC for the listed filter H<sub>2</sub> diffusivity (e.g., a container with a filter H<sub>2</sub> diffusivity of 4.2 x 10<sup>-6</sup> must use a DAC for a filter with a 3.7 x 10<sup>-6</sup> filter H<sub>2</sub> diffusivity). If a filter H<sub>2</sub> diffusivity for a container is undocumented or unknown or is less than 1.9 X 10<sup>-6</sup> filter H<sub>2</sub> diffusivity, a filter of known H<sub>2</sub> diffusivity that is greater than or equal to 1.9 X 10<sup>-6</sup> filter H<sub>2</sub> diffusivity must be installed prior to initiation of the relevant DAC period.

<sup>b</sup> The documented rigid liner vent hole diameter must be greater than or equal to the listed value to use the DAC for the listed rigid liner vent hole diameter (e.g., a container with a rigid liner vent hole of 0.5 in. must use a DAC for a rigid liner vent hole of 0.375 in.). If the rigid liner vent hole diameter for a container is undocumented during packaging (Attachment B, Section B-3(d)(1)), repackaging (Attachment B, Section B-3(d)(1)), and/or venting (Section B1-1a[64][ii]), that container must use a DAC for a rigid liner vent hole diameter of 0.30 in.

Note: Containers that are sampled using the Scenario 2 DAC do not require information on the packaging configuration because the Scenario 2 DAC are based on a bounding packaging configuration.

**TABLE B1-8**  
**SCENARIO 3 PACKAGING CONFIGURATION GROUPS**

Packaging Configuration Group	Covered S3000/S4000 Packaging Configuration Groups	Covered S5000 Packaging Configuration Groups
Packaging Configuration Group 1, 55-gal drums <sup>a</sup>	<ul style="list-style-type: none"> <li>• <del>No layers of confinement, filtered inner lid<sup>tr</sup></del></li> <li>• <del>No inner bags, no liner bags (bounding case)</del></li> </ul>	<ul style="list-style-type: none"> <li>• No layers of confinement, filtered inner lid<sup>b</sup></li> <li>• No inner bags, no liner bags (bounding case)</li> </ul>
Packaging Configuration Group 2, 55-gal drums <sup>a</sup>	<ul style="list-style-type: none"> <li>• <del>1 inner bag</del></li> <li>• <del>1 filtered inner bag</del></li> <li>• <del>1 liner bag (bounding case)</del></li> <li>• <del>1 filtered liner bag</del></li> </ul>	<ul style="list-style-type: none"> <li>• 1 inner bag</li> <li>• 1 filtered inner bag</li> <li>• 1 liner bag</li> <li>• 1 filtered liner bag</li> <li>• 1 inner bag, 1 liner bag</li> <li>• 1 filtered inner bag, 1 filtered liner bag</li> <li>• 2 inner bags</li> <li>• 2 filtered inner bags</li> <li>• 2 inner bags, 1 liner bag</li> <li>• 2 filtered inner bags, 1 filtered liner bag</li> <li>• 3 inner bags</li> <li>• 3 filtered inner bags</li> <li>• 3 filtered inner bags, 1 filtered liner bag</li> <li>• 3 inner bags, 1 liner bag (bounding case)</li> </ul>
Packaging Configuration Group 3, 55-gal drums <sup>a</sup>	<ul style="list-style-type: none"> <li>• <del>1 inner bag, 1 liner bag</del></li> <li>• <del>1 filtered inner bag, 1 filtered liner bag</del></li> <li>• <del>2 inner bags</del></li> <li>• <del>2 filtered inner bags</del></li> <li>• <del>2 liner bags (bounding case)</del></li> <li>• <del>2 filtered liner bags</del></li> </ul>	<ul style="list-style-type: none"> <li>• 2 liner bags</li> <li>• 2 filtered liner bags</li> <li>• 1 inner bag, 2 liner bags</li> <li>• 1 filtered inner bag, 2 filtered liner bags</li> <li>• 2 inner bags, 2 liner bags</li> <li>• 2 filtered inner bags, 2 filtered liner bags</li> <li>• 3 filtered inner bags, 2 filtered liner bags</li> <li>• 4 inner bags</li> <li>• 3 inner bags, 2 liner bags</li> <li>• 4 inner bags, 2 liner bags (bounding case)</li> </ul>



1 2	Packaging Configuration Group 4, pipe components	<ul style="list-style-type: none"> <li>• <del>No layers of confinement inside a pipe component</del></li> <li>• <del>1 filtered inner bag, 1 filtered metal can inside a pipe component</del></li> <li>• <del>2 inner bags inside a pipe component</del></li> <li>• <del>2 filtered inner bags inside a pipe component</del></li> <li>• <del>2 filtered inner bags, 1 filtered metal can inside a pipe component</del></li> <li>• <del>2 inner bags, 1 filtered metal can inside a pipe component (bounding case)</del></li> </ul>	<ul style="list-style-type: none"> <li>• No layers of confinement inside a pipe component</li> <li>• 1 filtered inner bag, 1 filtered metal can inside a pipe component</li> <li>• 2 inner bags inside a pipe component</li> <li>• 2 filtered inner bags inside a pipe component</li> <li>• 2 filtered inner bags, 1 filtered metal can inside a pipe component</li> <li>• 2 inner bags, 1 filtered metal can inside a pipe component (bounding case)</li> </ul>
3 4	Packaging Configuration Group 5, Standard Waste Box or Ten-Drum Overpack <sup>a</sup>	<ul style="list-style-type: none"> <li>• <del>No layers of confinement</del></li> <li>• <del>1 SWB liner bag (bounding case)</del></li> </ul>	<ul style="list-style-type: none"> <li>• No layers of confinement</li> <li>• 1 SWB liner bag (bounding case)</li> </ul>
5 6	Packaging Configuration Group 6, Standard Waste Box or Ten-Drum Overpack <sup>a</sup>	<ul style="list-style-type: none"> <li>• <del>any combination of inner and/or liner bags that is less than or equal to 6</del></li> <li>• <del>5 inner bags, 1 SWB liner bag (bounding case)</del></li> </ul>	<ul style="list-style-type: none"> <li>• any combination of inner and/or liner bags that is less than or equal to 6</li> <li>• 5 inner bags, 1 SWB liner bag (bounding case)</li> </ul>
7 8	Packaging Configuration Group 7, 85-gal. drums and 100-gal. drums <sup>a</sup>	<ul style="list-style-type: none"> <li>• <del>No inner bags, no liner bags, no rigid liner, filtered inner lid (bounding case)<sup>†</sup></del></li> <li>• <del>No inner bags, no liner bags, no rigid liner</del></li> </ul>	<ul style="list-style-type: none"> <li>• No inner bags, no liner bags, no rigid liner, filtered inner lid (bounding case)<sup>b</sup></li> <li>• No inner bags, no liner bags, no rigid liner</li> </ul>
9 10	Packaging Configuration Group 8, 85-gal. drums and 100-gal. drums <sup>a</sup>	<ul style="list-style-type: none"> <li>• <del>4 inner bags and 2 liner bags, no rigid liner, filtered inner lid (bounding case)<sup>†</sup></del></li> </ul>	<ul style="list-style-type: none"> <li>• 4 inner bags and 2 liner bags, no rigid liner, filtered inner lid (bounding case)<sup>b</sup></li> </ul>

<sup>a</sup> If a specific Packaging Configuration Groups cannot be determined based on the data collected during packaging (Attachment B, Section B-3(d)1) and/or repackaging (Attachment B, Section B-3(d)1), a conservative default Packaging Configuration Group of 3 for 55-gallon drums, 6 for SWBs and TDOPs, and 8 for 85-gallon and 100-gallon drums must be assigned provided the drums do not contain pipe component packaging. If pipe components are present as packaging in the drums, the pipe components must be sampled following the requirements for Packaging Configuration Group 4.

<sup>b</sup> A "filtered inner lid" is the inner lid on a double lid drum that contains a filter.

1     **Definitions:**

2     **Liner Bags:** One or more optional plastic bags that are used to control radiological contamination. Liner  
3     bags for drums have a thickness of approximately 11 mils. Liner bags are typically similar in size to the  
4     container. SWB liner bags have a thickness of approximately 14 mils. TDOPs use SWB liner bags.

5     **Inner Bags:** One or more optional plastic bags that are used to control radiological contamination. Inner  
6     bags have a thickness of approximately 5 mils and are typically smaller than liner bags.

**TABLE B1-9**  
**SCENARIO 3 DRUM AGE CRITERIA (in days) MATRIX FOR S5000 WASTE**  
**BY PACKAGING CONFIGURATION GROUP**

Packaging Configuration Group 1						
Filter H <sub>2</sub> Diffusivity <sup>a</sup> (mol/s/mol fraction)	Rigid Liner Vent Hole Diameter <sup>b</sup>				No Liner Lid	No Liner
	0.3-inch Diameter Hole	0.375- inch Diameter Hole	0.75-inch Diameter Hole	1-inch Diameter Hole		
1.9 x 10 <sup>-6</sup>	131	95	37	24	4	4
3.7 x 10 <sup>-6</sup>	111	85	36	24	4	4
3.7 x 10 <sup>-5</sup>	28	28	23	19	4	4

Packaging Configuration Group 2						
Filter H <sub>2</sub> Diffusivity <sup>a</sup> (mol/s/mol fraction)	Rigid Liner Vent Hole Diameter <sup>b</sup>				No Liner Lid	No Liner
	0.3-inch Diameter Hole	0.375- inch Diameter Hole	0.75-inch Diameter Hole	1-inch Diameter Hole		
1.9 x 10 <sup>-6</sup>	175	138	75	60	30	11
3.7 x 10 <sup>-6</sup>	152	126	73	59	30	11
3.7 x 10 <sup>-5</sup>	58	57	52	47	28	8

Packaging Configuration Group 3						
Filter H <sub>2</sub> Diffusivity <sup>a</sup> (mol/s/mol fraction)	Rigid Liner Vent Hole Diameter <sup>b</sup>				No Liner Lid	No Liner
	0.3-inch Diameter Hole	0.375- inch Diameter Hole	0.75-inch Diameter Hole	1-inch Diameter Hole		
1.9 x 10 <sup>-6</sup>	199	161	96	80	46	16
3.7 x 10 <sup>-6</sup>	175	148	93	79	46	16
3.7 x 10 <sup>-5</sup>	72	72	67	62	42	10

Packaging Configuration Group 4	
Filter H <sub>2</sub> Diffusivity <sup>a</sup> (mol/s/mol fraction)	Headspace Sample Taken Inside Pipe Component
> 1.9 x 10 <sup>-6</sup>	152

Packaging Configuration Group 5	
Filter H <sub>2</sub> Diffusivity <sup>a, c</sup> (mol/s/mol fraction)	Headspace Sample Taken Inside SWB/TDOP
> 7.4 x 10 <sup>-6</sup> (SWB)	15
3.33 x 10 <sup>-5</sup> (TDOP)	15

Packaging Configuration Group 6	
Filter H <sub>2</sub> Diffusivity <sup>a, c</sup> (mol/s/mol fraction)	Headspace Sample Taken Inside SWB/TDOP
> 7.4 x 10 <sup>-6</sup> (SWB)	56
3.33 x 10 <sup>-5</sup> (TDOP)	56

Packaging Configuration Group 7 <sup>d</sup>			
Filter H <sub>2</sub> Diffusivity <sup>a</sup> (mol/s/mol fraction)	Inner Lid Filter Vent Minimum H <sub>2</sub> Diffusivity (mol/s/mol fraction) <sup>a</sup>		
	7.4 x 10 <sup>-6</sup>	1.85 x 10 <sup>-5</sup>	9.25 x 10 <sup>-5e</sup>
3.7 x 10 <sup>-6</sup>	13	7	2
7.4 x 10 <sup>-6</sup>	10	6	2
1.85 x 10 <sup>-5</sup>	6	4	2

Packaging Configuration Group 8	
Filter H <sub>2</sub> Diffusivity <sup>a</sup> (mol/s/mol fraction)	Inner Lid Filter Vent Minimum H <sub>2</sub> Diffusivity (mol/s/mol fraction)
	7.4 x 10 <sup>-6</sup>
3.7 x 10 <sup>-6</sup>	21

<sup>a</sup> The documented filter H<sub>2</sub> diffusivity must be greater than or equal to the listed value to use the DAC for the listed filter H<sub>2</sub> diffusivity (e.g., a container with a filter H<sub>2</sub> diffusivity of 4.2 x 10<sup>-6</sup> must use a DAC for a filter with a 3.7 x 10<sup>-6</sup> filter H<sub>2</sub> diffusivity). If a filter H<sub>2</sub> diffusivity for a container is undocumented or unknown or is less than 1.9 X 10<sup>-6</sup> filter H<sub>2</sub> diffusivity, a filter of known H<sub>2</sub> diffusivity that is greater than or equal to 1.9 X 10<sup>-6</sup> filter H<sub>2</sub> diffusivity must be installed prior to initiation of the relevant DAC period.

<sup>b</sup> The documented rigid liner vent hole diameter must be greater than or equal to the listed value to use the DAC for the listed rigid liner vent hole diameter (e.g., a container with a rigid liner vent hole of 0.5 in.

1 must use a DAC for a rigid liner vent hole of 0.375 in.). If the rigid liner vent hole diameter for a container  
2 is undocumented during packaging (~~Attachment B, Section B-3(d)1~~), repackaging (~~Attachment B,~~  
3 ~~Section B-3(d)1~~), and/or venting (Section B1-1a[64][ii]), that container must use a DAC for a rigid liner  
4 vent hole diameter of 0.30 in.

5 <sup>c</sup> The filter H<sub>2</sub> diffusivity for SWBs or TDOPs is the sum of the diffusivities for all of the filters on the  
6 container because SWBs and TDOPs have more than 1 filter.

7 <sup>d</sup> Headspace sample taken between inner and outer drum lids. If headspace sample is taken inside the  
8 filtered inner drum lid prior to placement of the outer drum lid, then a DAC value of 2 days may be used.  
9 Footnote e is also applicable. Packaging Configuration Group 7 DAC values apply to drums with up to  
10 two lids.

11 <sup>e</sup> While a DAC value of 2 days may be determined, containers must comply with the equilibrium  
12 requirements specified in Section B1-1a (i.e., 72 hours at 18°C or higher). The equilibrium requirement  
13 for headspace gas sampling shall be met separately.

**TABLE B1-10**  
**SCENARIO 3 DRUM AGE CRITERIA (in days) MATRIX FOR S3000 AND**  
**S4000 WASTE BY PACKAGING CONFIGURATION GROUP**

Packaging Configuration Group 1						
Filter H <sub>2</sub> Diffusivity <sup>a</sup> (mol/s/mol fraction)	Rigid Liner Vent Hole Diameter <sup>b</sup>				No Liner Lid	No-Liner
	0.3-inch Diameter Hole	0.375- inch Diameter Hole	0.75-inch Diameter Hole	1-inch Diameter Hole		
1.9 x 10 <sup>-6</sup>	131	95	37	24	4	4
3.7 x 10 <sup>-6</sup>	111	85	36	24	4	4
3.7 x 10 <sup>-5</sup>	28	28	23	19	4	4

Packaging Configuration Group 2						
Filter H <sub>2</sub> Diffusivity <sup>a</sup> (mol/s/mol fraction)	Rigid Liner Vent Hole Diameter <sup>b</sup>				No Liner Lid	No-Liner
	0.3-inch Diameter Hole	0.375- inch Diameter Hole	0.75-inch Diameter Hole	1-inch Diameter Hole		
1.9 x 10 <sup>-6</sup>	213	175	108	92	56	18
3.7 x 10 <sup>-6</sup>	188	161	105	90	56	17
3.7 x 10 <sup>-5</sup>	80	80	75	71	49	10

Packaging Configuration Group 3						
Filter H <sub>2</sub> Diffusivity <sup>a</sup> (mol/s/mol fraction)	Rigid Liner Vent Hole Diameter <sup>b</sup>				No Liner Lid	No-Liner
	0.3-inch Diameter Hole	0.375- inch Diameter Hole	0.75-inch Diameter Hole	1-inch Diameter Hole		
1.9 x 10 <sup>-6</sup>	283	243	174	154	107	34
3.7 x 10 <sup>-6</sup>	253	225	166	151	106	31
3.7 x 10 <sup>-5</sup>	124	121	115	110	84	13

Packaging Configuration Group 4	
Filter H <sub>2</sub> Diffusivity <sup>a</sup> (mol/s/mol fraction)	Headspace Sample Taken Inside Pipe Component
>1.9 x 10 <sup>-6</sup>	152

Packaging Configuration Group 5	
Filter H <sub>2</sub> Diffusivity <sup>a,c</sup> (mol/s/mol fraction)	Headspace Sample Taken Inside SWB/TDOP
>7.4 x 10 <sup>-6</sup> (SWB)	15
3.33 x 10 <sup>-5</sup> (TDOP)	15

Packaging Configuration Group 6	
Filter H <sub>2</sub> Diffusivity <sup>a,c</sup> (mol/s/mol fraction)	Headspace Sample Taken Inside SWB/TDOP
>7.4 x 10 <sup>-6</sup> (SWB)	56
3.33 x 10 <sup>-5</sup> (TDOP)	56

Packaging Configuration Group 7 <sup>d</sup>			
Filter H <sub>2</sub> Diffusivity <sup>a</sup> (mol/s/mol fraction)	Inner Lid Filter Vent Minimum H <sub>2</sub> Diffusivity (mol/s/mol fraction) <sup>a</sup>		
	7.4 x 10 <sup>-6</sup>	1.85 x 10 <sup>-5</sup>	9.25 x 10 <sup>-5</sup> <sup>e</sup>
3.7 x 10 <sup>-6</sup>	13	7	2
7.4 x 10 <sup>-6</sup>	10	6	2
1.85 x 10 <sup>-5</sup>	6	4	2

Packaging Configuration Group 8	
Filter H <sub>2</sub> Diffusivity <sup>a</sup> (mol/s/mol fraction)	Inner Lid Filter Vent Minimum H <sub>2</sub> Diffusivity (mol/s/mol fraction)
	7.4 x 10 <sup>-6</sup>
3.7 x 10 <sup>-6</sup>	21

<sup>a</sup> The documented filter H<sub>2</sub> diffusivity must be greater than or equal to the listed value to use the DAC for the listed filter H<sub>2</sub> diffusivity (e.g., a container with a filter H<sub>2</sub> diffusivity of 4.2 x 10<sup>-6</sup> must use a DAC for a filter with a 3.7 x 10<sup>-6</sup> filter H<sub>2</sub> diffusivity). If a filter H<sub>2</sub> diffusivity for a container is undocumented or unknown or is less than 1.9 X 10<sup>-6</sup> filter H<sub>2</sub> diffusivity, a filter of known H<sub>2</sub> diffusivity that is greater than or equal to 1.9 X 10<sup>-6</sup> filter H<sub>2</sub> diffusivity must be installed prior to initiation of the relevant DAC period.

- 1 ~~<sup>b</sup> The documented rigid liner vent hole diameter must be greater than or equal to the listed value to use~~  
2 ~~the DAC for the listed rigid liner vent hole diameter (e.g., a container with a rigid liner vent hole of 0.5 in~~  
3 ~~must use a DAC for a rigid liner vent hole of 0.375 in.). If the rigid liner vent hole diameter for a container~~  
4 ~~is undocumented during packaging (Attachment B, Section B-3(d)1), repackaging (Attachment B,~~  
5 ~~Section B-3(d)1), and/or venting (Section B1-1a[6][ii]), that container must use a DAC for a rigid liner~~  
6 ~~vent hole diameter of 0.30 in.~~
- 7 ~~<sup>c</sup> The filter H<sub>2</sub> diffusivity for SWBs or TDOPs is the sum of the diffusivities for all of the filters on the~~  
8 ~~container because SWBs and TDOPs have more than 1 filter.~~
- 9 ~~<sup>d</sup> Headspace sample taken between inner and outer drum lids. If headspace sample is taken inside the~~  
10 ~~filtered inner drum lid prior to placement of the outer drum lid, then a DAC value of 2 days may be used.~~  
11 ~~Footnote e is also applicable. Packaging Configuration Group 7 DAC values apply to drums with up to~~  
12 ~~two lids.~~
- 13 ~~<sup>e</sup> While a DAC value of 2 days may be determined, containers must comply with the equilibrium~~  
14 ~~requirements specified in Section B1-1a (i.e., 72 hours at 18°C or higher). The equilibrium requirement~~  
15 ~~for headspace gas sampling shall be met separately.~~



1

## FIGURES

(This page intentionally blank)

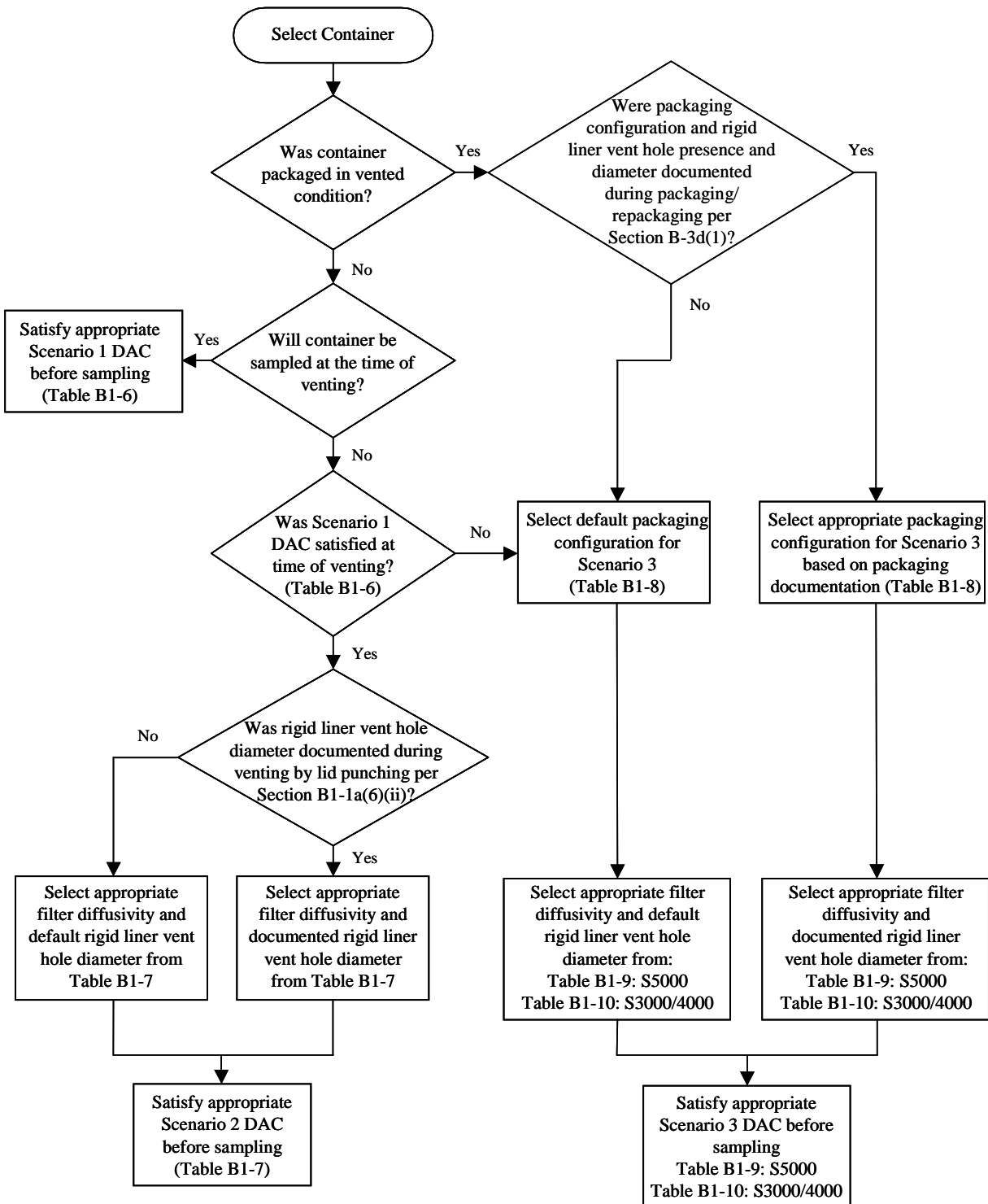


Figure B1-1  
 Headspace Gas Drum Age Criteria Sampling Scenario Selection Process

Figure B1-2  
Headspace Sampling Manifold

Figure B1-3  
SUMMA® Canister Components Configuration (Not to Scale)

Figure B1-4  
Schematic Diagram of Direct Canister with the Poly Bag Sampling Head

Figure B1-5  
Rotational Coring Tool (Light Weight Auger)

Figure B1-6  
Non-Rotational Coring Tool (Thin Walled Sampler)



Figure B1-7  
Overall Programmatic Approach to Visual Examination