



Department of Energy
Carlsbad Field Office
P. O. Box 3090
Carlsbad, New Mexico 88221
January 10, 2011



Mr. James Bearzi, Chief
Hazardous Waste Bureau
New Mexico Environment Department
2905 Rodeo Park Drive East, Building 1
Santa Fe, New Mexico 87505-6303

Subject: Notification of Planned Change to the Permitted Facility to Support TRUPACT-III

Dear Mr. Bearzi:

The purpose of this letter is to notify you of planned changes to the permitted facility in accordance with the Waste Isolation Pilot Plant Hazardous Waste Facility Permit, Part 1, *General Permit Conditions*, Section 1.7.11.1, *Reporting Planned Changes*. The changes to the permitted facility are planned to occur during the current maintenance outage, and are described in the enclosed Notification of Planned Change to the Permitted Facility—Waste Isolation Pilot Plant.

If you have any questions regarding this notification, please contact George Basabilvazo at (575) 234-7488.

Sincerely,

Edward Ziemianski, Acting Manager
Carlsbad Field Office

M. F. Sharif, General Manager
Washington TRU Solutions, LLC

Enclosure

cc: w/enclosure
S. Zappe, NMED

*ED

*ED denotes electronic distribution

**Notification of Planned Change to the Permitted Facility
Waste Isolation Pilot Plant**

The purpose of this Notification of Planned Change to the Permitted Facility is to inform the New Mexico Environment Department (NMED) of the Permittees' intent to perform the changes described below to the Waste Handling Building in support of the installation of handling equipment for TRUPACT-III. These modifications are in addition to those identified in the notification submitted to the NMED on September 16, 2010.

The Permittees have identified 21 wall penetrations listed in the attached table. These are needed for conduit that will be used to connect various components of the electrical, communications and monitoring systems associated with the TRUPACT-III project. The wall penetrations are for conduit access between the Contact-Handled Waste Bay (CH Bay-Building 411) and Airlocks 100, 101, 102, and 107, the TRUPACT Maintenance Facility (TMF, Building 412), and Room 108 of Building 411. The approximate locations of these penetrations are depicted on the attached figure. (Note: The figure has 12 locations for the 21 penetrations.) These penetrations will vary from approximately 1 inch to 2 ½ inches in diameter to accommodate the conduit sizes listed on the attached table. The area around the conduit will be sealed. The conduit will be capped until the wiring is installed at a later date. The capped conduit will not impact the negative pressure differential maintained in the CH Bay relative to the outside atmosphere. The work to install the 21 penetrations will occur during the 2010-2011 maintenance outage.

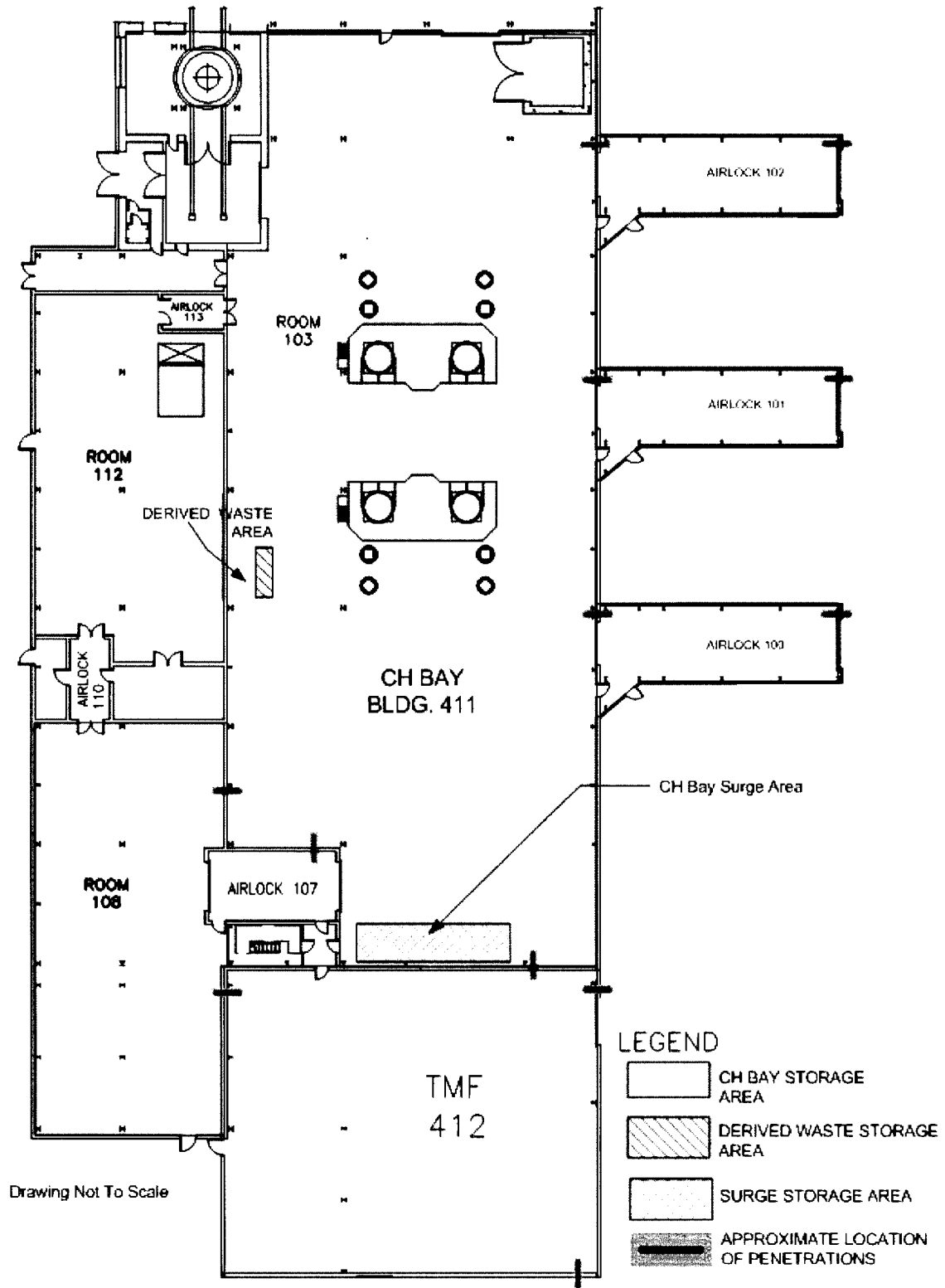
Some of the penetrations in the TMF are not in the Permitted Facility. These are identified on the attached table with asterisks. To fully describe all the penetrations, the Permittees have included these items in this notification for your information. In the event that additional penetrations are necessary, the Permittees will provide an additional Notification of Planned Change with appropriate details. The following table describes each penetration and its approximate size and location.

These alterations will be certified by a Professional Engineer, registered in New Mexico, and approved by the NMED before waste management activities are resumed in the affected area. These changes are planned to be ready for inspection by the NMED on January 18, 2011. The following changes described in the Notification of Planned Change dated September 16, 2010 are also planned to be ready for inspection at that time: the penetration/ductwork for the hood ventilation system terminating in a hand damper in Room 108 and the battery exhaust ductwork in the CH-Bay; the engineered insert to level the floor in the Conveyance Loading Room; and one set of pallet stands in the CH Bay.

Table Listing of TRUPACT-III required penetrations

Number of Holes	Conduit Size (Inches)	Affected Area	Approximate Location
1	3/4	Airlock 102 - Outside	Adjacent to the roll-up door
1	3/4	Airlock 101 - Outside	Adjacent to the roll-up door
1	3/4	Airlock 100 - Outside	Adjacent to the roll- up door
2	3/4	CH Bay - Airlock 100	Adjacent to the interior roll-up door
2	3/4	CH Bay - Airlock 101	Adjacent to the interior roll-up door
2	3/4	CH Bay - Airlock 102	Adjacent to the interior roll- up door
3*	3/4	TMF - Outside	Adjacent to roll-up door & SW corner of TMF West Wall
2	1 1/2	CH Bay - TMF	Adjacent to the door
3	3/4	CH Bay - Room 108	East of Airlock 107 near battery charging station in CH Bay
1*	3/4	Room 108 - TMF	NE corner of TMF North Wall
3	3/4	CH Bay – Airlock 107	East wall of Airlock 107

***Penetrations that are not in the Permitted Facility**



Drawing Not To Scale

For Information Purposes Only