



**Department of Energy**  
 Carlsbad Field Office  
 P. O. Box 3090  
 Carlsbad, New Mexico 88221  
**SEP 10 2012**



**ENTERED**



Mr. John E. Kieling, Chief  
 Hazardous Waste Bureau  
 New Mexico Environment Department  
 2905 Rodeo Park Drive East, Building 1  
 Santa Fe, New Mexico 87505-6303

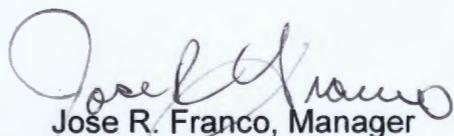
Subject: Comments on the July 5, 2012, Class II Permit Modification Request, "Addition of a Shielded Container"

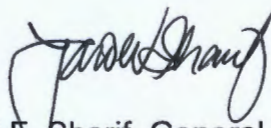
Dear Mr. Kieling:

The purpose of this letter is to provide the New Mexico Environment Department (NMED) with comments on the Class II Permit Modification Request, "Addition of a Shielded Container" submitted to the NMED on July 5, 2012.

If you have questions regarding this submittal, please contact Mr. George T. Basabilvazo at (575) 234-7488.

Sincerely

  
 Jose R. Franco, Manager  
 Carlsbad Field Office

  
 M.F. Sharif, General Manager  
 Washington TRU Solutions, LLC

Enclosure

cc: w/enclosure  
 J. Davis, NMED \*ED  
 T. Kliphuis, NMED ED  
 C. Walker, Trinity Engineering ED  
 CBFO M&RC  
 \*ED denotes electronic distribution



## Permittees' Comments on the Class 2 Permit Modification Request for the *Addition of a Shielded Container*

On July 5, 2012, the Permittees submitted a Class 2 permit modification request (PMR) for the addition of shielded containers as an authorized disposal container to the New Mexico Environment Department (NMED). Public meetings were held in Carlsbad and Santa Fe, New Mexico, on August 14<sup>th</sup> and 16<sup>th</sup>, respectively. The end of the 60-day public comment period ends at 5:00 PM on September 10, 2012.

The Permittees are submitting one comment with regards to the Class 2 PMR for the *Addition of a Shielded Container*. During meetings with the public and regulator discussing the Permittees proposal, the Permittees discerned some amount of confusion between shielded containers in general and the shielded container the Permittees are proposing to add as an authorized disposal container. By this comment, the Permittees' are clarifying that the shielded container subject to this PMR is the shielded container that has been approved for shipment in a HalfPACT by the Nuclear Regulatory Commission (NRC). To specifically identify the shielded container being requested as an authorized disposal container at the WIPP facility, the Permittees are providing proposed revised text for consideration for inclusion in proposed Permit Part 3, Section 3.3.1.8. *Shielded Container*. This proposed text references previously proposed figure A1-37. Figure A1-37 is based on the specific drawing of the shielded container that was approved by the NRC. A copy of the referenced drawing is attached for the administrative record. Only the shielded container depicted in Figure A1-37 is being proposed as an authorized disposal container.

The Permittees' comment appears here as blue text in the redlined proposed revised text provided in the July 5, 2012 PMR:

### 3.3.1.8. Shielded Container \*

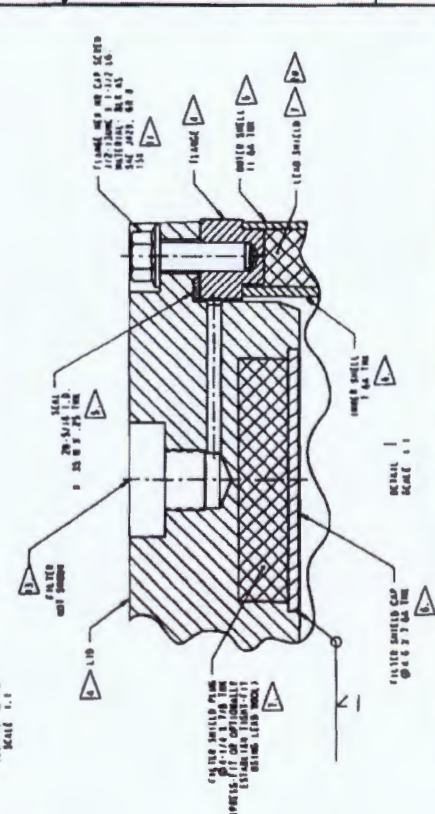
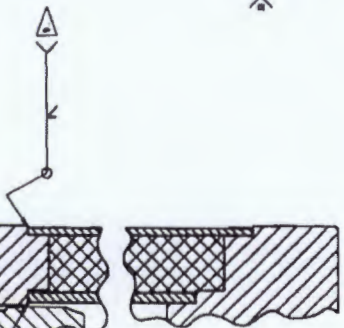
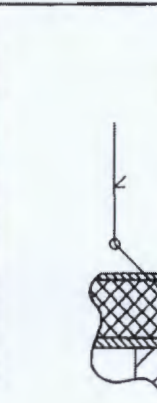
Each shielded container contains a 30-gallon inner container with a gross internal volume of 4.0 ft<sup>3</sup> (0.11 m<sup>3</sup>). Shielded containers contain RH TRU mixed waste, but the shielding will allow it to be managed and stored as CH TRU mixed waste. For the purpose of this Permit, shielded containers will be managed, stored, and disposed as CH TRU mixed waste, but will be counted towards the volume limits associated with RH TRU mixed waste.

Shielded containers may be overpacked into a standard waste box or ten drum overpack.

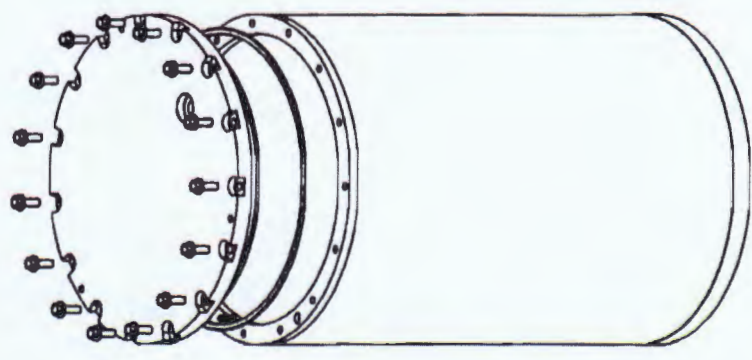
\* "Shielded Container" refers to the container depicted in Figure A1-37.

163-008 2 1

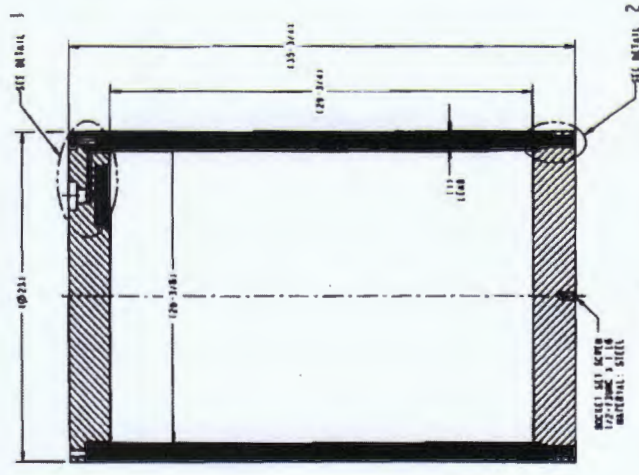
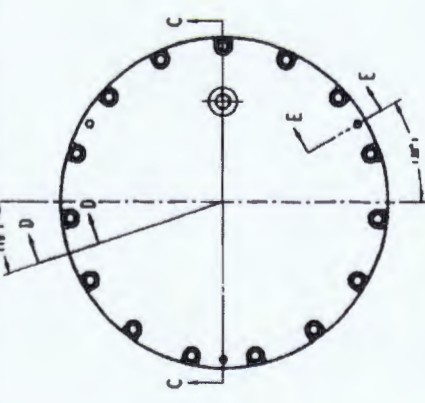
REV.	DESCRIPTION	DATE
0	INITIAL RELEASE	10/1/79
1	SIZE DOB 01837.01.M003-03	



SECTION D-D  
SCALE 1:1



REFERENCE VIEW



SECTION C-C  
SHIELDED CONTAINER ASSEMBLY

U.S. Department of Energy

SHIELDED CONTAINER  
SAR DRAWING

**ORIGINAL SIGNATURES ON FILE**

SCALE 1/A	REV. N/A
SCALE 1/B	SCALE 1/C
SCALE 1/D	SCALE 1/E
SCALE 1/F	SCALE 1/G
SCALE 1/H	SCALE 1/I
SCALE 1/J	SCALE 1/K
SCALE 1/L	SCALE 1/M
SCALE 1/N	SCALE 1/O
SCALE 1/P	SCALE 1/Q
SCALE 1/R	SCALE 1/S
SCALE 1/T	SCALE 1/U
SCALE 1/V	SCALE 1/W
SCALE 1/X	SCALE 1/Y
SCALE 1/Z	SCALE 1/AA
SCALE 1/AB	SCALE 1/AC
SCALE 1/AD	SCALE 1/AE
SCALE 1/AF	SCALE 1/AG
SCALE 1/AH	SCALE 1/AI
SCALE 1/AJ	SCALE 1/AK
SCALE 1/AL	SCALE 1/AM
SCALE 1/AN	SCALE 1/AO
SCALE 1/AP	SCALE 1/AQ
SCALE 1/AR	SCALE 1/AS
SCALE 1/AT	SCALE 1/AU
SCALE 1/AV	SCALE 1/AW
SCALE 1/AX	SCALE 1/AY
SCALE 1/AZ	SCALE 1/BA
SCALE 1/BB	SCALE 1/BC
SCALE 1/BD	SCALE 1/BE
SCALE 1/BD	SCALE 1/BE



NO.	REV.	DATE	BY
1	1	10/1/79	
2	1	10/1/79	
3	1	10/1/79	
4	1	10/1/79	
5	1	10/1/79	
6	1	10/1/79	
7	1	10/1/79	
8	1	10/1/79	
9	1	10/1/79	
10	1	10/1/79	