

Allen, Pam, NMENV

From: Maestas, Ricardo, NMENV
Sent: Wednesday, June 25, 2014 3:10 PM
To: Allen, Pam, NMENV
Subject: FW: plan
Attachments: Air Exhaust Plan.pdf; Louver that redirects air to HEPA Filters Colored.pdf

March

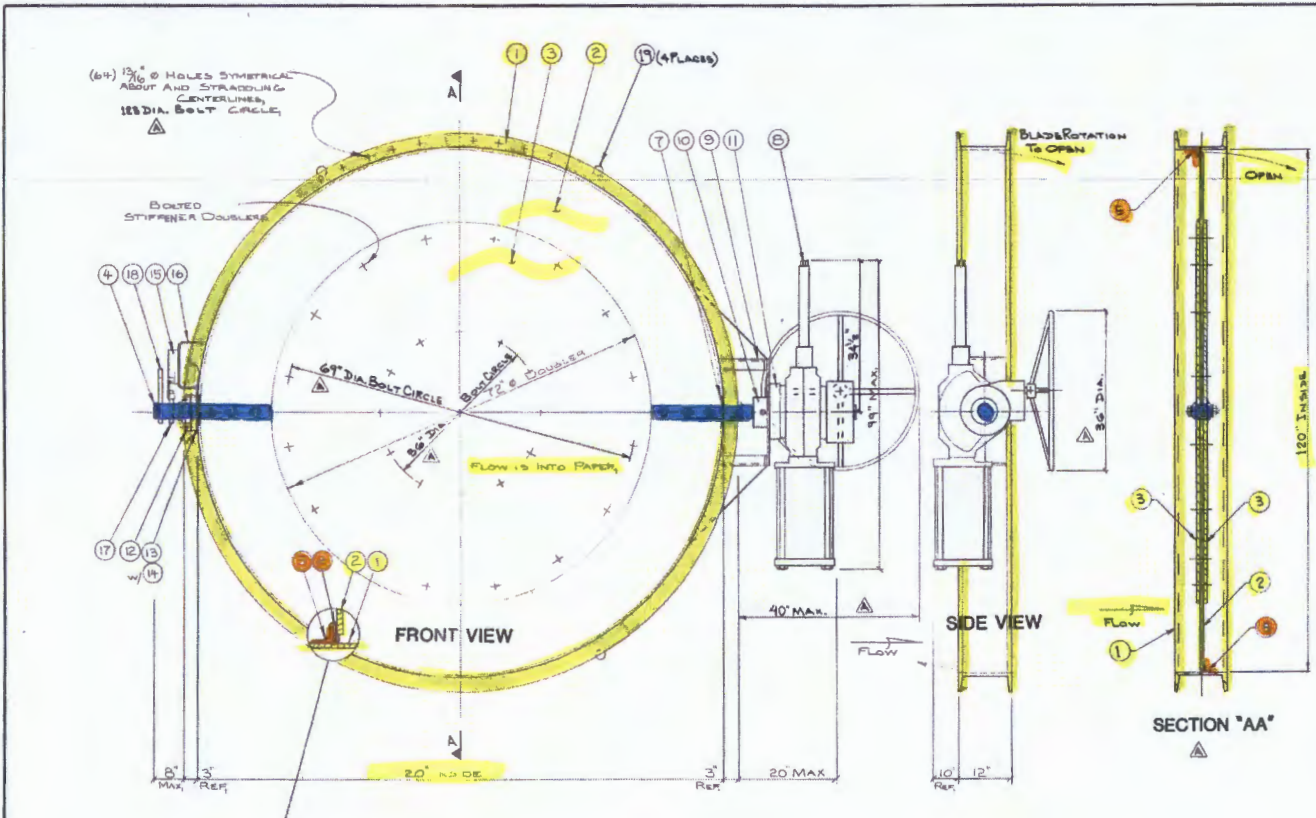
From: Kliphuis, Trais, NMENV
Sent: Thursday, March 06, 2014 11:46 AM
To: Maestas, Ricardo, NMENV; Smith, Coleman, NMENV; Holmes, Steve, NMENV
Subject: FW: plan

Trais Kliphuis
WIPP Staff Manager
Hazardous Waste Bureau
New Mexico Environment Department
2905 Rodeo Park Drive E, Building 1
Santa Fe, New Mexico 87505

Office: 505-476-6051
Front Desk: 505-476-6000

From: Skibitski, Thomas, NMENV
Sent: Thursday, March 06, 2014 11:45 AM
To: Blaine, Tom, NMENV; Kliphuis, Trais, NMENV; Kieling, John, NMENV; Schwender, Erika, NMENV; Tongate, Butch, NMENV; LucasKamat, Susan, NMENV
Subject: plan

Thomas Skibitski
Chief, DOE Oversight Bureau
Office (505) 845-5932
Cell (505) 377-8135



REV.	BY/DATE	APP/DATE	DESCRIPTION
A	DL 2-11-83		MISC. REVISIONS PER PEG. 17 APPROVAL PRINT

DESIGN CONDITIONS

MAX VOLUME: 210,000 ACFM HOR S.
 LOCATION: OUTSIDE
 MAX STATIC PRESSURE: 10" WG
 MAX PRESSURE LOSS: 10" WG
 LEAKAGE: 1000 ACFM

TEMP. MIN./MAX. F17/175 F
 Ea. Nos.: 413-HD-056-01A
 413-HD-056-01B

Changed to
 003A & 003B
 Vuoi

ACTUATOR:
 GREER MODEL 45171 SR80 SINGLE
 ACTING SPRING RETURN MANUAL
 OVERRIDE, FILTER, REGULATOR, &
 SOLENOID VALVE.

FAIL POSITION: CLOSED ON LOSS OF AIR
 OR POWER

ALL DIMENSIONS UNLESS OTHERWISE NOTED OR OTHERWISE
 SPECIFIED FOR OPTIONAL OR CUSTOMER ORDER

1. APPROVAL: 10/1/83
 2. APPROVAL: 10/1/83
 3. APPROVAL: 10/1/83
 4. APPROVAL: 10/1/83
 5. APPROVAL: 10/1/83
 6. APPROVAL: 10/1/83
 7. APPROVAL: 10/1/83
 8. APPROVAL: 10/1/83
 9. APPROVAL: 10/1/83
 10. APPROVAL: 10/1/83
 11. APPROVAL: 10/1/83
 12. APPROVAL: 10/1/83
 13. APPROVAL: 10/1/83
 14. APPROVAL: 10/1/83
 15. APPROVAL: 10/1/83
 16. APPROVAL: 10/1/83
 17. APPROVAL: 10/1/83
 18. APPROVAL: 10/1/83
 19. APPROVAL: 10/1/83
 20. APPROVAL: 10/1/83
 21. APPROVAL: 10/1/83
 22. APPROVAL: 10/1/83
 23. APPROVAL: 10/1/83
 24. APPROVAL: 10/1/83
 25. APPROVAL: 10/1/83
 26. APPROVAL: 10/1/83
 27. APPROVAL: 10/1/83
 28. APPROVAL: 10/1/83
 29. APPROVAL: 10/1/83
 30. APPROVAL: 10/1/83
 31. APPROVAL: 10/1/83
 32. APPROVAL: 10/1/83
 33. APPROVAL: 10/1/83
 34. APPROVAL: 10/1/83
 35. APPROVAL: 10/1/83
 36. APPROVAL: 10/1/83
 37. APPROVAL: 10/1/83
 38. APPROVAL: 10/1/83
 39. APPROVAL: 10/1/83
 40. APPROVAL: 10/1/83
 41. APPROVAL: 10/1/83
 42. APPROVAL: 10/1/83
 43. APPROVAL: 10/1/83
 44. APPROVAL: 10/1/83
 45. APPROVAL: 10/1/83
 46. APPROVAL: 10/1/83
 47. APPROVAL: 10/1/83
 48. APPROVAL: 10/1/83
 49. APPROVAL: 10/1/83
 50. APPROVAL: 10/1/83
 51. APPROVAL: 10/1/83
 52. APPROVAL: 10/1/83
 53. APPROVAL: 10/1/83
 54. APPROVAL: 10/1/83
 55. APPROVAL: 10/1/83
 56. APPROVAL: 10/1/83
 57. APPROVAL: 10/1/83
 58. APPROVAL: 10/1/83
 59. APPROVAL: 10/1/83
 60. APPROVAL: 10/1/83
 61. APPROVAL: 10/1/83
 62. APPROVAL: 10/1/83
 63. APPROVAL: 10/1/83
 64. APPROVAL: 10/1/83
 65. APPROVAL: 10/1/83
 66. APPROVAL: 10/1/83
 67. APPROVAL: 10/1/83
 68. APPROVAL: 10/1/83
 69. APPROVAL: 10/1/83
 70. APPROVAL: 10/1/83
 71. APPROVAL: 10/1/83
 72. APPROVAL: 10/1/83
 73. APPROVAL: 10/1/83
 74. APPROVAL: 10/1/83
 75. APPROVAL: 10/1/83
 76. APPROVAL: 10/1/83
 77. APPROVAL: 10/1/83
 78. APPROVAL: 10/1/83
 79. APPROVAL: 10/1/83
 80. APPROVAL: 10/1/83
 81. APPROVAL: 10/1/83
 82. APPROVAL: 10/1/83
 83. APPROVAL: 10/1/83
 84. APPROVAL: 10/1/83
 85. APPROVAL: 10/1/83
 86. APPROVAL: 10/1/83
 87. APPROVAL: 10/1/83
 88. APPROVAL: 10/1/83
 89. APPROVAL: 10/1/83
 90. APPROVAL: 10/1/83
 91. APPROVAL: 10/1/83
 92. APPROVAL: 10/1/83
 93. APPROVAL: 10/1/83
 94. APPROVAL: 10/1/83
 95. APPROVAL: 10/1/83
 96. APPROVAL: 10/1/83
 97. APPROVAL: 10/1/83
 98. APPROVAL: 10/1/83
 99. APPROVAL: 10/1/83
 100. APPROVAL: 10/1/83

EXHAUST FILTER BUILDING
 WIFE, CARLSBAD, NEW MEXICO
 CONTRACT NO. DACW42-82-C-0002
 FOLEY CO. 281 FRONT ST. E.E. MO.
 64500
 Quality Control Check
 15102.01A 15103.01A

ITEM	QTY	DESCRIPTION	MATERIAL
1	1	DAMPER I.D. TAG	18 GA. 304 SS A 240
2	1	LIFT BARS	1/2" # 304 A108/B633
3	1	POSITION INDICATOR	1/2" FB. A36/B633
4	1	LIMIT SWITCH CAM	1/2" FB. A36/B633
5	1	LIMIT SWITCH MOUNT	1/4" # A36/B633
6	2	LIMIT SWITCH	MICRO SWITCH LS1A
7	1	SEAL	3" I.D. LIP SEAL COMM.
8	1	BEARING MOUNT	3" # 304 MACHINED A108/B633
9	1	BEARING	4-BOLT FLANGE, PHOS. BALL BEARING
10	1	ACTUATOR SPACER	2" FB. A36/B633
11	1	ACTUATOR COUPLING	4 1/2" # 304 A36/B633
12	1	ACTUATOR MOUNT	1/2" # 304 CHANNEL A36/B633
13	1	ACTUATOR	GREER MODEL 45102
14	1	SHAFT END SEALS	(2) UHMW PLASTIC (4) NYLON NYLON
15	2	BLADE STOP	3" # 304 A108/B633
16	2	STUB SHAFTS	3" # 304 A108/B633
17	2	DOUBLERS	1/2" # 304 A36/B633
18	2	BLADE	1/2" # 304 A36/B633
19	1	FRAME	1/2" x 25" ROLLED CHANNEL A36/B633

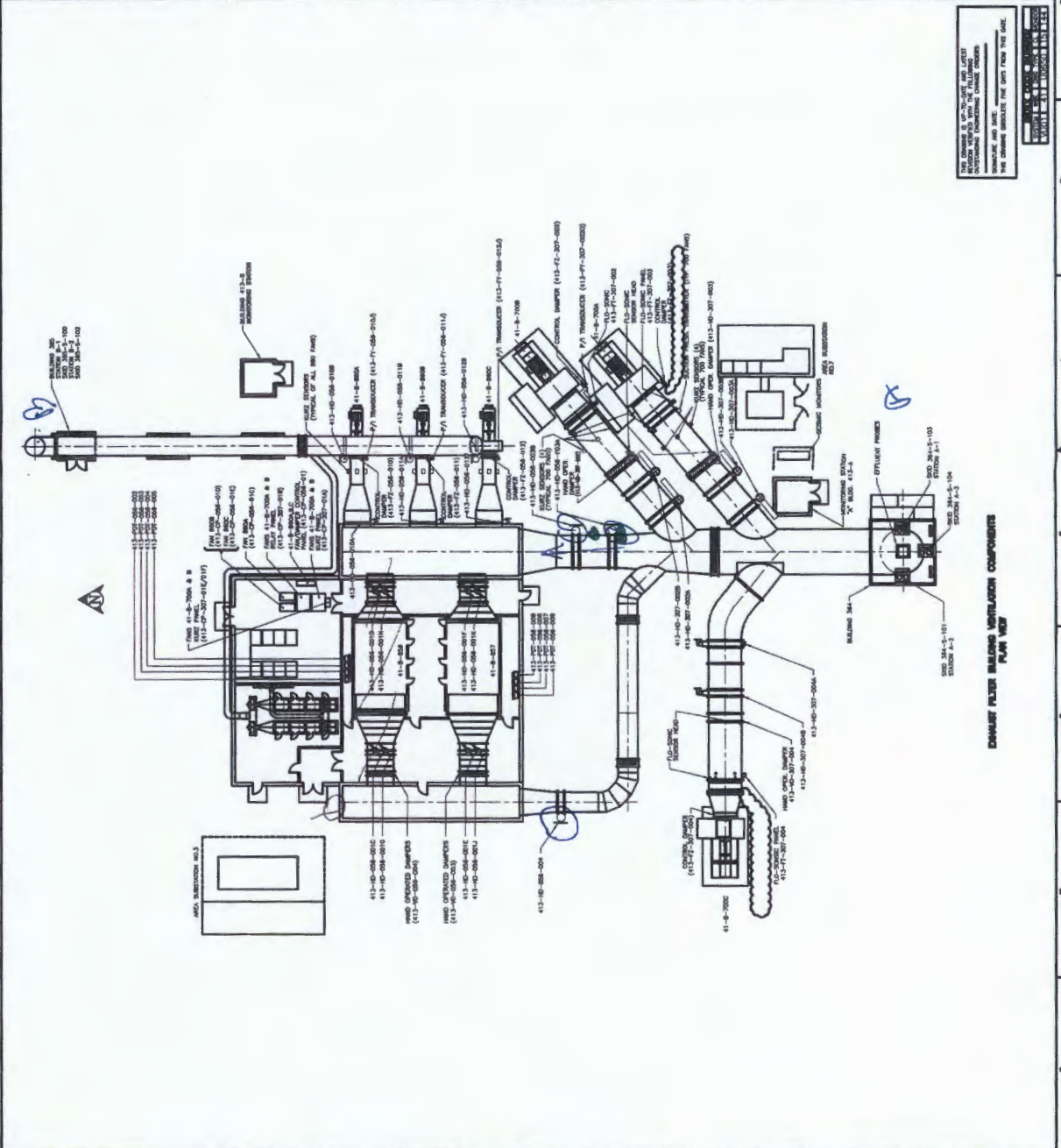
CUSTOMER		FOLEY COMPANY	
ENGINEER		U.S. ARMY CORPS OF ENGINEERS	
JOB NAME		CARLSBAD, N.M.	
AGENT		Spec. 15103 TITLE 120" DIA.	
SIGNATURES		DATE	
DRAWN		SIZE	
ENGINEER		D	
PRODUCTION		DATE	
APPROVED		DATE	
QUALITY CONTROL		DATE	
SCALE		UNIT WEIGHT	
NONE		A5830 LBS.	
SHEET		1 OF 1	

THE INFORMATION CONTAINED IN THIS DWG. IS CONFIDENTIAL, AND THE PROPERTY OF ACDC INC. THIS INFORMATION MAY NOT BE USED FOR THE DESIGN AND/OR PRODUCTION OF APPARATUS EXCEPT AS SPECIFICALLY AUTHORIZED IN WRITING BY AN OFFICER OF ACDC INC.

STANDARD DIMENSIONAL TOLERANCES
 INSIDE & FACE TO FACE ± 1/8" - OUTSIDE ± 1/16"
 HOLES: HOLE SIZE & SPACING ± 1/16"
 STRUCTURAL COMPONENTS STD. MILL
 ANY VARIATION IS NOTED ON DRAWING

CONTROL AIR FOR BLDG 41 U/C EXHAUST AND	41-1-001-1
CONTROL AIR FOR BLDG 41 U/C EXHAUST AND	41-1-002-1
CONTROL AIR FOR BLDG 41 U/C EXHAUST AND	41-1-003-1
CONTROL AIR FOR BLDG 41 U/C EXHAUST AND	41-1-004-1
CONTROL AIR FOR BLDG 41 U/C EXHAUST AND	41-1-005-1
CONTROL AIR FOR BLDG 41 U/C EXHAUST AND	41-1-006-1
CONTROL AIR FOR BLDG 41 U/C EXHAUST AND	41-1-007-1
CONTROL AIR FOR BLDG 41 U/C EXHAUST AND	41-1-008-1
CONTROL AIR FOR BLDG 41 U/C EXHAUST AND	41-1-009-1
CONTROL AIR FOR BLDG 41 U/C EXHAUST AND	41-1-010-1
CONTROL AIR FOR BLDG 41 U/C EXHAUST AND	41-1-011-1
CONTROL AIR FOR BLDG 41 U/C EXHAUST AND	41-1-012-1
CONTROL AIR FOR BLDG 41 U/C EXHAUST AND	41-1-013-1
CONTROL AIR FOR BLDG 41 U/C EXHAUST AND	41-1-014-1
CONTROL AIR FOR BLDG 41 U/C EXHAUST AND	41-1-015-1
CONTROL AIR FOR BLDG 41 U/C EXHAUST AND	41-1-016-1
CONTROL AIR FOR BLDG 41 U/C EXHAUST AND	41-1-017-1
CONTROL AIR FOR BLDG 41 U/C EXHAUST AND	41-1-018-1
CONTROL AIR FOR BLDG 41 U/C EXHAUST AND	41-1-019-1
CONTROL AIR FOR BLDG 41 U/C EXHAUST AND	41-1-020-1
CONTROL AIR FOR BLDG 41 U/C EXHAUST AND	41-1-021-1
CONTROL AIR FOR BLDG 41 U/C EXHAUST AND	41-1-022-1
CONTROL AIR FOR BLDG 41 U/C EXHAUST AND	41-1-023-1
CONTROL AIR FOR BLDG 41 U/C EXHAUST AND	41-1-024-1
CONTROL AIR FOR BLDG 41 U/C EXHAUST AND	41-1-025-1
CONTROL AIR FOR BLDG 41 U/C EXHAUST AND	41-1-026-1
CONTROL AIR FOR BLDG 41 U/C EXHAUST AND	41-1-027-1
CONTROL AIR FOR BLDG 41 U/C EXHAUST AND	41-1-028-1
CONTROL AIR FOR BLDG 41 U/C EXHAUST AND	41-1-029-1
CONTROL AIR FOR BLDG 41 U/C EXHAUST AND	41-1-030-1

- LEGEND**
- TERMINAL IN FIELD
 - TERMINAL IN CONTROL PANEL
 - TERMINAL IN LOCAL CONTROL PANEL
 - TERMINAL IN FIELD EXHAUST
 - TERMINAL IN LOCAL EXHAUST PANEL
 - TERMINAL IN FIELD EXHAUST
- GENERAL NOTES**
1. CONTROL POINTS ON DRAWING ARE AS SHOWN UNLESS OTHERWISE NOTED.
 2. ALL TERMINALS ARE TO BE INSTALLED IN ACCORDANCE WITH THE FOLLOWING NOTES.
 3. ALL TERMINALS ARE TO BE INSTALLED IN ACCORDANCE WITH THE FOLLOWING NOTES.
 4. ALL TERMINALS ARE TO BE INSTALLED IN ACCORDANCE WITH THE FOLLOWING NOTES.
 5. ALL TERMINALS ARE TO BE INSTALLED IN ACCORDANCE WITH THE FOLLOWING NOTES.
 6. ALL TERMINALS ARE TO BE INSTALLED IN ACCORDANCE WITH THE FOLLOWING NOTES.
 7. ALL TERMINALS ARE TO BE INSTALLED IN ACCORDANCE WITH THE FOLLOWING NOTES.
 8. ALL TERMINALS ARE TO BE INSTALLED IN ACCORDANCE WITH THE FOLLOWING NOTES.
 9. ALL TERMINALS ARE TO BE INSTALLED IN ACCORDANCE WITH THE FOLLOWING NOTES.
 10. ALL TERMINALS ARE TO BE INSTALLED IN ACCORDANCE WITH THE FOLLOWING NOTES.
 11. ALL TERMINALS ARE TO BE INSTALLED IN ACCORDANCE WITH THE FOLLOWING NOTES.
 12. ALL TERMINALS ARE TO BE INSTALLED IN ACCORDANCE WITH THE FOLLOWING NOTES.
 13. ALL TERMINALS ARE TO BE INSTALLED IN ACCORDANCE WITH THE FOLLOWING NOTES.
 14. ALL TERMINALS ARE TO BE INSTALLED IN ACCORDANCE WITH THE FOLLOWING NOTES.
 15. ALL TERMINALS ARE TO BE INSTALLED IN ACCORDANCE WITH THE FOLLOWING NOTES.
 16. ALL TERMINALS ARE TO BE INSTALLED IN ACCORDANCE WITH THE FOLLOWING NOTES.



DOWNEY FILTER BUILDING INSTRUMENTATION COMPONENTS PLAN VIEW

THE DRAWING IS TO BE USED FOR THE DESIGN AND CONSTRUCTION OF THE INSTRUMENTATION COMPONENTS OF THE DOWNEY FILTER BUILDING. THE CONTRACTOR SHALL BE RESPONSIBLE FOR THE PROVISION OF ALL NECESSARY MATERIALS AND LABOR. THE CONTRACTOR SHALL BE RESPONSIBLE FOR THE PROVISION OF ALL NECESSARY MATERIALS AND LABOR. THE CONTRACTOR SHALL BE RESPONSIBLE FOR THE PROVISION OF ALL NECESSARY MATERIALS AND LABOR.

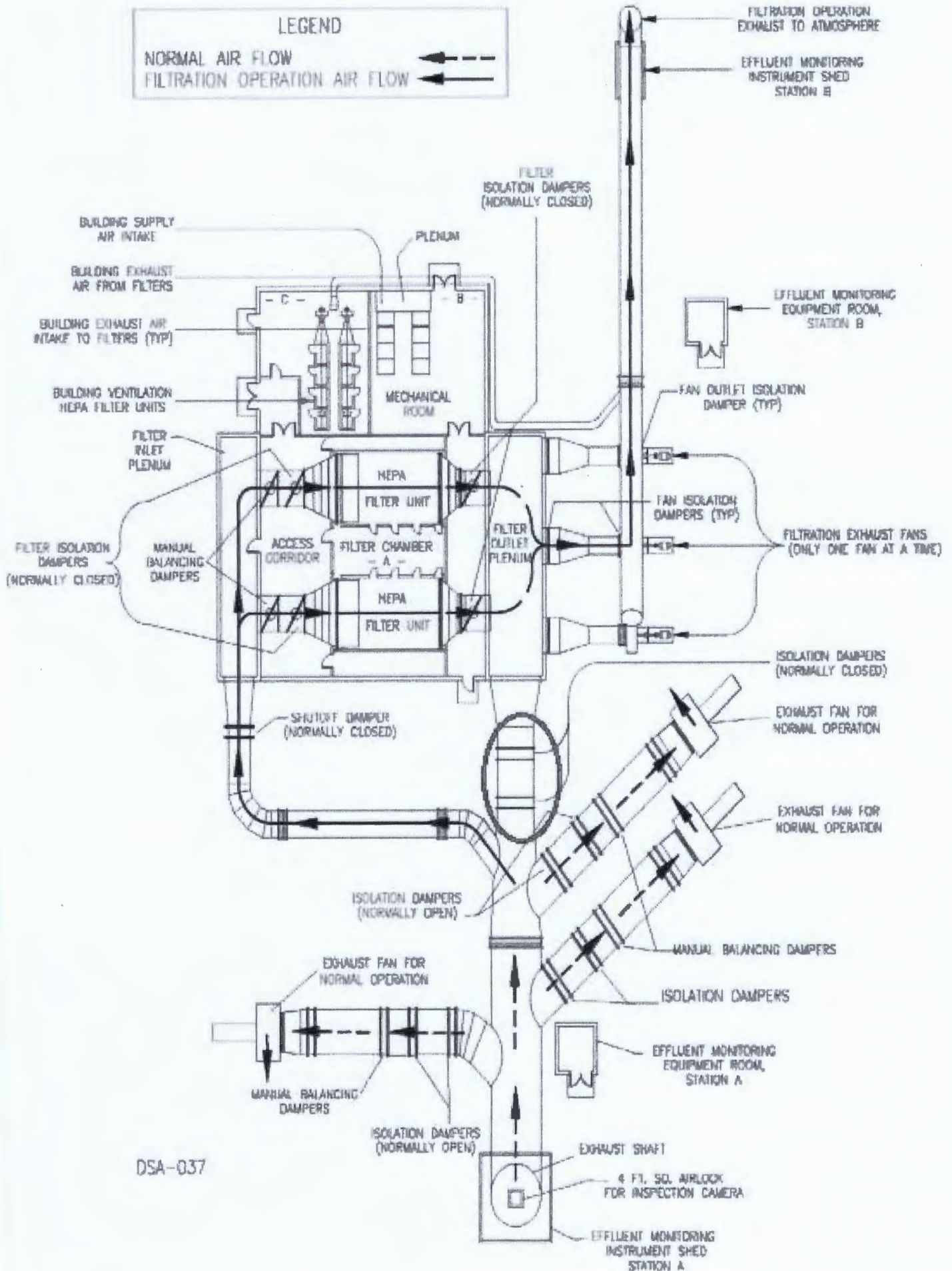
DATE: 11/11/68

BY: [Signature]

NO.	DESCRIPTION	QTY	UNIT	PRICE	TOTAL
1
2
3
4
5
6
7
8
9
10
11
12
13
14
15
16
17
18
19
20
21
22
23
24
25
26
27
28
29
30
31
32
33
34
35
36
37
38
39
40
41
42
43
44
45
46
47
48
49
50
51
52
53
54
55
56
57
58
59
60
61
62
63
64
65
66
67
68
69
70
71
72
73
74
75
76
77
78
79
80
81
82
83
84
85
86
87
88
89
90
91
92
93
94
95
96
97
98
99
100

LEGEND

NORMAL AIR FLOW ← - - -
FILTRATION OPERATION AIR FLOW ← ———



DSA-037