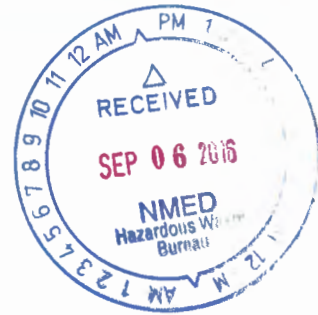




ENTERED

Department of Energy
Carlsbad Field Office
P. O. Box 3090
Carlsbad, New Mexico 88221



SEP 02 2016

Mr. John E. Kieling, Bureau Chief
Hazardous Waste Bureau
New Mexico Environment Department
2905 Rodeo Park Drive East, Building 1
Santa Fe, NM 87508-6303

Subject: Submittal of the 2016 CH Bay Surge Storage Summary Report

Dear Mr. Kieling,

The purpose of this letter is to provide you with an annual summary report, the 2016 *Contact-Handled (CH) Bay Surge Storage Summary Report* pursuant to Permit Part 3, Section 3.1.1.4., *Notification of CH Bay Surge Storage Use*. The Permittees originally notified the New Mexico Environment Department of the use of surge storage on March 14, 2014.

We certify under penalty of law that this document and all attachments were prepared under our direction or supervision according to a system designed to assure that qualified personnel properly gather and evaluate the information submitted. Based on our inquiry of the person or persons who manage the system, or those persons directly responsible for gathering the information, the information submitted is, to the best of our knowledge and belief, true, accurate, and complete. We are aware that there are significant penalties for submitting false information, including the possibility of fine and imprisonment for knowing violations.

If you have any questions, please contact Mr. George T. Basabilvazo at (575) 234-7488.

Sincerely,

Todd Shrader, Manager
Carlsbad Field Office

Philip J. Breidenbach, Project Manager
Nuclear Waste Partnership LLC

Enclosure

cc: w/enclosure
R. Maestas, NMED *ED
C. Smith, NMED ED
CBFO M&RC
*ED denotes electronic distribution



2016 Contact-Handled (CH) Bay Surge Storage Summary Report

Background

Pursuant to the Waste Isolation Pilot Plant (WIPP) Hazardous Waste Facility Permit (Permit) Part 3, Section 3.1.1.4., *Notification of CH Bay Surge Storage Use*, the Permittees are required to submit an annual report to the Secretary by October 27th of each year summarizing CH Bay Surge Storage Area usage. The purpose of this report is to provide the annual report for the period of July 1, 2015, through June 30, 2016. The Permittees used the Contact-Handled (CH) Bay Surge Storage Area during this period to manage and store CH transuranic (TRU) mixed waste that could not be emplaced as a result of the fire and radiological events that occurred in February 2014. Note that surge storage reports are only submitted when surge storage has been used during the year.

CH Bay Surge Storage Summary

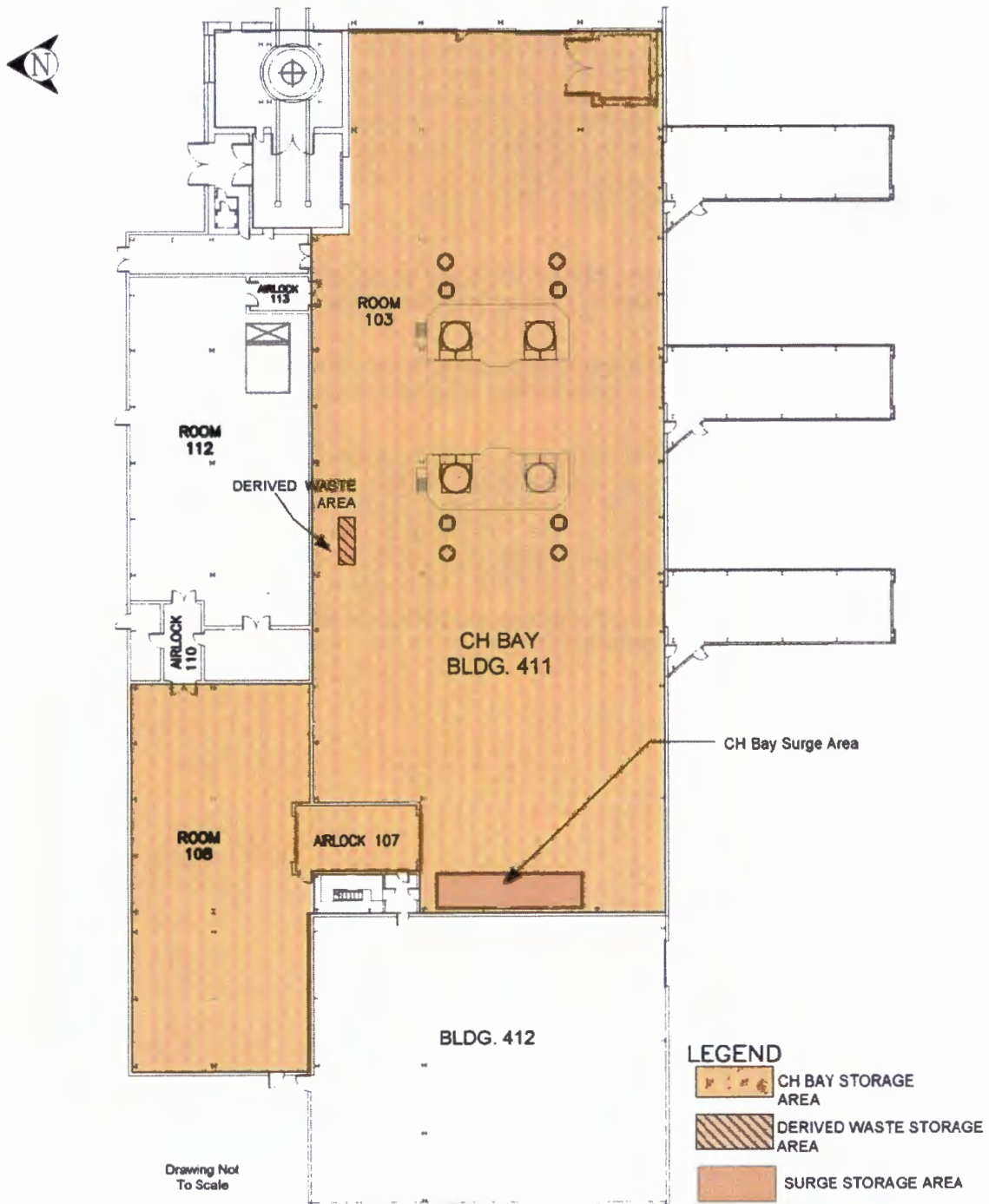
The NMED was notified of the Permittees intent to use surge storage pursuant to Permit Part 3, Section 3.1.1.4. on March 14, 2014. An illustration of CH Bay Surge Storage Area is found in Figure 1 of this report.

The CH TRU mixed waste was moved from the Parking Area Unit to the CH Bay Surge Storage Area starting on March 26, 2014. A total of 1,285 cubic feet of waste was placed into the CH Bay Surge Storage Area in 2014.

On June 3, 2016, the Permittees reconfigured waste in the Waste Handling Building. There was no new waste brought into the CH Bay. However, containers from shipment SR140005 were moved out of the surge storage area to the north east corner of the CH Bay. Waste containers WISD006, WISD007, and WISD012 were moved into the surge storage area. These waste containers contain waste generated from previous filter change-outs. As of the end of the reporting period, a total of 1,306 cubic feet of waste is stored in the CH Bay Surge Storage Area. See Table 1 for a summary of CH Bay surge storage.

On June 20, 2016, the NMED granted the Permittees an extension in storage time for waste in the CH Bay. Storage is now authorized until June 30, 2017.

Figure 1
Waste Handling Building - CH TRU Mixed Waste Container Storage and Surge Storage Areas



**Table 1
CH Bay Surge Storage Area Summary**

Surge Storage Date	Shipment	Assembly	Contents	Volume¹ (ft³)
03-26-14	IN140045	IN139923	TDOP	160
	IN140044	IN139670	TDOP	160
03-26-14	SR314013	SR139789	SLB2	261
03-27-14	LA140020	LA139965	SWB	66.3
		LA139966	SWB	66.3
	IN140043	IN140096	SWB	66.3
		IN140097	SWB	66.3
03-27-14	SR314014	SR139793	SLB2	261
06-03-16	N/A	N/A	SWB	66.3
		N/A	SWB	66.3
		N/A	SWB	66.3
				1,306.1 ft³

¹55Gal Drum=7.4 ft³, SWB=66.3 ft³, TDOP=160 ft³, SLB2=261 ft³ (Permit Part 3, Section 3.3.1)
N/A Not Applicable