



**NEW MEXICO ENERGY, MINERALS
& NATURAL RESOURCES DEPARTMENT**

OFFICE OF THE SECRETARY
2040 South Pacheco Street
Santa Fe, New Mexico 87505
(505) 827-8560

Jennifer A. Salisbury
CABINET SECRETARY

July 2, 1997

Mr. George Dials
Manager
Carlsbad Area Office
U.S. Department of Energy
P.O. Box 3090
Carlsbad, NM 88220-3090

Mr. Benito Garcia, Chief
Radioactive and Hazardous
Materials Bureau
N.M. Environment Dept.
P.O. Box 26110
Santa Fe, NM 87502

Mr. Robert H. Neill
Director
Environmental Evaluation Group
7007 Wyoming Boulevard, N.E.
Albuquerque, NM 87109

Mr. Lindsay Lovejoy, Jr.
Assistant Attorney General
Attorney General's Office
P.O. Drawer 1508
Santa Fe, NM 87504-1508

**Subject: CALL for AGENDA ITEMS: NEXT WIPP QUARTERLY REVIEW
MEETING, THURSDAY, JULY 31, 1997, IN SANTA FE**

The next WIPP Quarterly Review Meeting is scheduled to convene at 8:30 a.m. on Thursday, July 31, 1997, in Santa Fe. I will be hosting this 59th WIPP Quarterly Review. DOE has offered its WIPP Public Information Center near the Plaza in downtown Santa Fe as the meeting place. The Center is located at 141 E. Palace Avenue, just a block northeast of the Plaza. Explicit directions to the Center are attached.

I am requesting that each of you send me (Fax: 827-1150) your preferences in terms of agenda items for the Quarterly. I would like to receive these recommendations by COB next Wednesday, July 9. I'll then get out a final agenda by Friday, July 11, so that all presenters can be lined up and have adequate prep time.

In talking to some of you already, I see the following as agenda items for this meeting:

- Overview/Results of New PA Calculations requested by EPA
- Status of SEIS-II and corresponding ROD
- Findings/Recommendations from DOE Generator Site Audits
- DOE-CAO Transportation Services Privatization Initiative

Sincerely,

Chris J. Wentz
Coordinator
N.M. Radioactive Waste Consultation Task Force

970704



DIRECTIONS TO:

59th WIPP QUARTERLY REVIEW MEETING
8:30 A.M., THURSDAY, JULY 31, 1997
WIPP PUBLIC INFORMATION CENTER
141 E. PALACE AVENUE
SANTA FE, NM
(505/982-7129)

From I-25 northbound, get off at the St. Francis Drive exit going north. (U.S. 84/285 is St. Francis in Santa Fe.)

After going through 5-6 intersections with stoplights, make a right onto Cerrillos Road. After passing the McDonald's, start looking for Paseo de Peralta on your right.

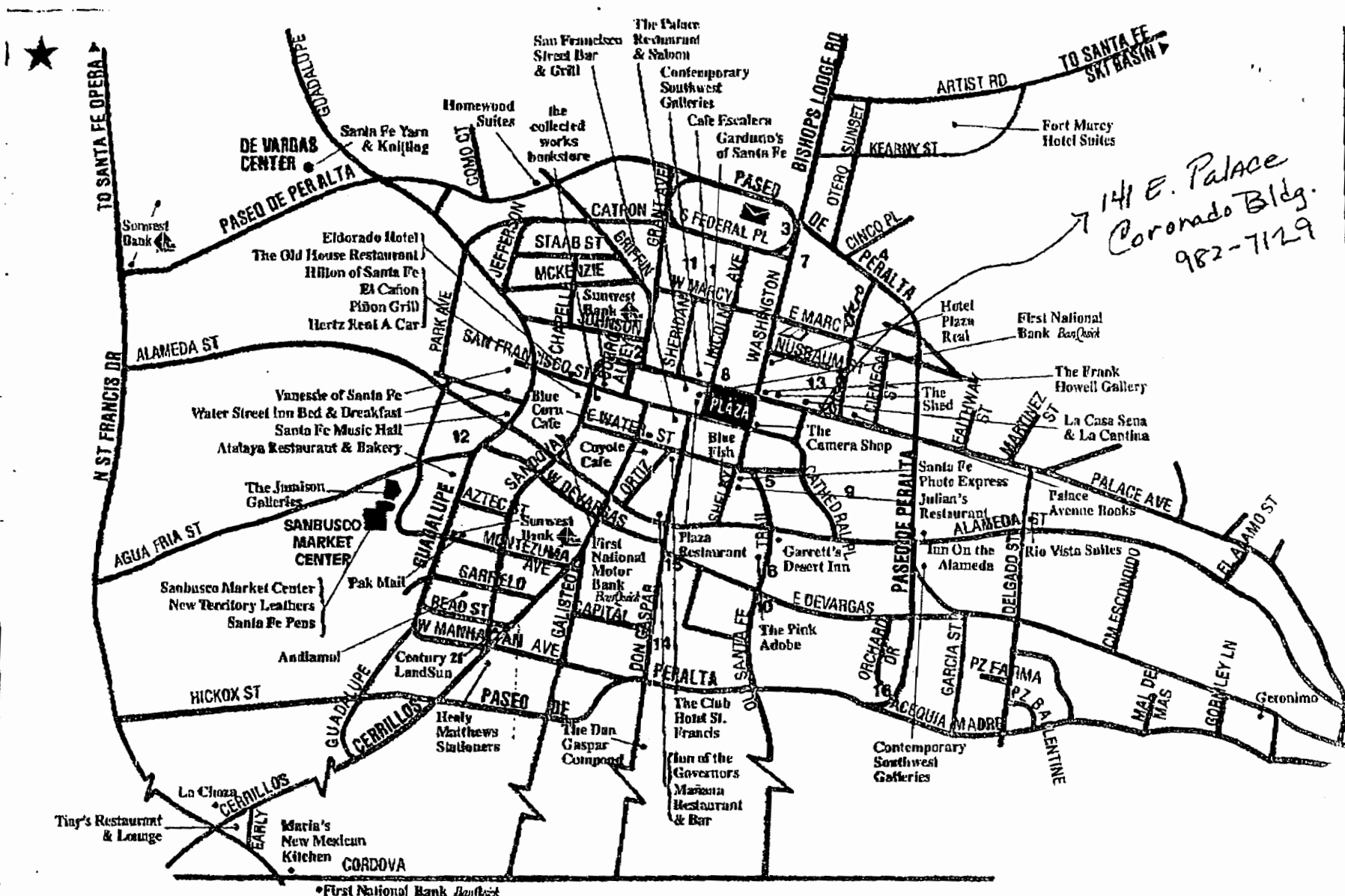
Make a right on Paseo de Peralta. Follow it around, past the State Capitol (Old Santa Fe Trail), past Fenn Gallery, past Palace Avenue (it's one-way the wrong way), to Marcy Street.

Make a left on Marcy. Go down a block or so to Otero Street.

Make a left on Otero. The building is down about a block on your right. The WIPP Center is located on the lower level (known as the basement to us former Midwesterners).

For parking, good luck...this is downtown Santa Fe. [There are unverified tales of tourists circling the Plaza looking for parking for so long that their vehicles turned into low-riders!] Two suggestions: 1) Plan on getting to the meeting location at least 15 minutes ahead of time; and 2) After making a left onto Marcy from Paseo de Peralta, there's a public lot on the northeast corner of Otero and Marcy, and a public garage down Marcy on the right a little bit further past Otero.

Attached is a map that staff from the WIPP Public Information Center faxed over. Hope these aids help...we'll see you there.



141 E. Palace
 Coronado Bldg.
 982-7129

07/02 JUL 02 '97 11:08 AM
 SANTA FE OPERA

WIPP INFORMATION CENTER

•First National Bank Bank

FAX ATTACK

Please deliver the attached 3-page fax to the following individuals:

Robert Neill, EEG (Albuquerque)
Lokesh Chaturvedi, EEG (Albuquerque)
Jim Kenney, EEG (Carlsbad)

Lindsay Lovejoy, AG's Office

Benito Garcia, NMED
Steve Zappe, NMED
John Parker, NMED

George Dials, DOE-CAO (Carlsbad)
Dennis Hurtt, DOE-CAO (Carlsbad)
Pat Kilgore, DOE-CAO (Carlsbad)

Howard Vasquez, DOE-CAO (Santa Fe)
Kathleen Sisneros, Consultant (Santa Fe)

If you do not receive all 3 pages, please call Chris Wentz at 827-1372.
Thanks.