

FINAL PRINT

Schlumberger

FORMATION DENSITY - GR

LIBRARY COPY

COMPANY N. E. C. A.  
 WELL NA-784  
 FIELD IYANBITO COMMUNITY  
 COUNTY MCKINLEY STATE NEW MEXICO

FIELD IYANBITO COMMUNITY  
 LOCATION 1900' FNL & 2600' FEL  
 WELL NA-784  
 COMPANY N. E. C. A.

LOCATION 1900' FNL & 2600' FEL  
 Other Services:  
 DITE-GR  
 FDC-GR  
 API SERIAL NO. N/A  
 SECT. 25  
 TWP. 15 N  
 RANGE 16 W

Permanent Datum GROUND LEVEL Elev. 6850.0 F Elev.: K.B.  
 Logging Measured From GROUND LEVEL 0.0 F above Perm. Datum D.F.  
 Logging Measured From GROUND LEVEL G.L. 6850.0 F

Date 08-JAN-1994  
 Run No. ONE  
 Depth Driller 1191.0 F  
 Depth Logger (Schl.) 1171.0 F  
 Normal Log Interval 1137.0 F  
 Strip Log Interval 100.0 F  
 Logging-Driller NONE @ @ @  
 Logging-Logger @ @ @  
 Tool Size 12 1/4" @ 1171.0 F @ @  
 Type Fluid in Hole POLYMER  
 Visc. 8.80 LB/G 44.0 S  
 Fld. Loss 9.0 4.0 C3  
 Source of Sample FLOWLINE  
 Temp @ Meas. Temp. 4.450 OHMM @ 70.0 DEGF @  
 Temp @ Meas. Temp. 3.730 OHMM @ 70.0 DEGF @  
 Temp @ Meas. Temp. 5.920 OHMM @ 70.0 DEGF @  
 Source: Rmf Rmc MEASURED CALCULATED  
 Temp @ BHT 4.031 OHMM @ 78.0 DEGF @  
 Circulation Ended 1030 8-JAN-1994  
 Logger on Bottom 1428 8-JAN-1994  
 Rec. Temp. 78.0 DEGF  
 Location 8206 FARMINGTON  
 By G. TRACY  
 By HANK POHLMANN

The well name, location and borehole reference data were furnished by the customer.

All interpretations are opinions based on inferences from electrical or other measurements and we cannot, and do not guarantee the accuracy or correctness of any interpretations, and we shall not, except in the case of gross or willful negligence on our part, be liable or responsible for any loss, costs, damages or expenses incurred or sustained by anyone resulting from any interpretations made by any of our officers, agents or employees. These interpretations are also subject to Clause 4 of our General Terms and Conditions as set out in our current Price Schedule.

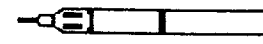
Run No.	ONE
Service Order No.	605587
Drilling Fluid Level	150.0 PPM
Salinity	3.379 OHMM @ 78.0 DEGF @
Rmf @ BHT	5.363 OHMM @ 78.0 DEGF @
Rmc @ BHT	1800.0 F/HR
Logging Speed	
EQUIPMENT DATA	
Tool Number 1	DRS 3718
Tool Number 2	NSC 2999
Tool Number 3	PDH 2782
Tool Number 4	PDG 2781
Tool Number 5	DIC 485
Tool Number 6	DIS 489
Tool Number 7	SGT 8206
Tool Number 8	TCM 1272
Tool Number 9	TCCB 206
Tool Number 10	
Tool Number 11	
Tool Number 12	

REMARKS:  
 LOG RUN ON SANDSTONE MATRIX (2.65 G/CC).  
 FOUR FIN STAND OFF USED ON DITE.  
 SP SHIFT AT 1005.

CREW: ODOM

LOGGING TOOL STRING SKETCH

GRCC  
 Iyanbito  
 Geophysical logs  
 167-666  
 167-668



PEH-A LOGGING HEAD

TCCB

SGTL

57.2 F

54.2 F

53.2 F

GR

BKGD: 08-JAN-1994 09:14

LDTD CALIPER CALIBRATION SUMMARY

CALI	MEASURED		CALIBRATED		UNITS
	SMALL	LARGE	SMALL	LARGE	
	8.06	12.48	8.00	12.00	IN

SMALL: 08-JAN-1994 09:15 LARGE: 08-JAN-1994 09:18 COMP: 08-JAN-1994 09:18

CP 32.6 FILE 5 08-JAN-1994 14:21

SHOP SUMMARY

PERFORMED: 12-DEC-1993 07:54  
PROGRAM FILE: CCSHOP (VERSION 32.6 91/08/23 91/08/23)

LDTD DETECTOR CALIBRATION SUMMARY

DENSITY RESISTIVITY SONDE NUMBER : 3718  
 NUCLEAR SERVICE CARTRIDGE NUMBER : 2999  
 POWERED DETECTOR HOUSING NUMBER : 2782  
 POWERED GAMMA-GAMMA DETECTOR NUMBER : 2781  
 LDT LOGGING SOURCE NUMBER : 1836  
 LDT CALIBRATION MODE : WATE

MASTER CALIBRATED

	BKGD	AL+FE	AL	UNITS
LL	15.9	90.1	96.6	CPS
LU	61.7	135.6	145.5	CPS
LS	46.7	158.0	169.3	CPS
LITH	4.6	40.5	60.0	CPS
SS1	13.1	167.3	178.6	CPS
SS2	8.7	259.5	276.6	CPS

HV SETTINGS	DETECTOR RESOLUTIONS
HV LS: 1307.7 V	LS: 8.7 %
HV SS: 1389.3 V	SS: 8.7 %

SPECTRUM QUALITY RATIOS

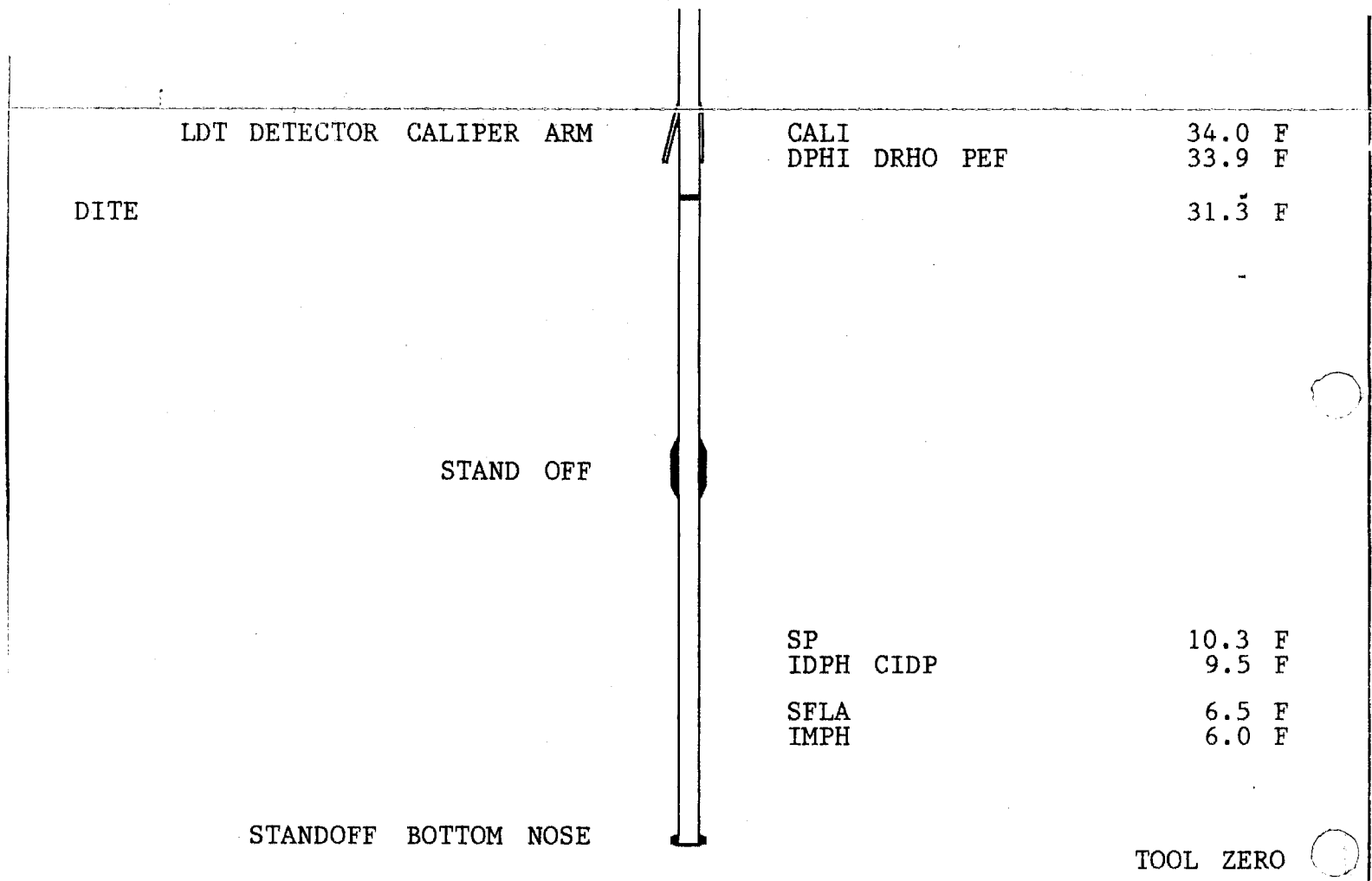
	COMPUTED VALUE	NOMINAL VALUE	TOLERANCE
QRLS	.664	0.65	+/- 0.05
QRSS	.646	0.72	+/- 0.10
QRLI	.354	0.35	+/- 0.06
QLIR	1.381	1.35	+/- 0.06
QR	1.004	1.00	+/- 0.02

BKGD: 12-DEC-1993 07:34 AL: 12-DEC-1993 07:50 AL+FE: 12-DEC-1993 07:44

CP 32.6 FILE 1 12-DEC-1993 07:53

COMPANY	N. E. C. A.	SCHL. FR	1137.0 F
		SCHL. TD	1171.0 F
WELL	NA-784	DRLR. TD	1191.0 F
		Elev:	KB
FIELD	IYANBITO COMMUNITY		DF
COUNTY	McKINLEY	STATE	NEW MEXICO
		GL	6850.0 F





TOTAL TOOL STRING LENGTH IS 60.2 F.  
 TOTAL TOOL STRING WEIGHT IS 938. LB IN AIR.

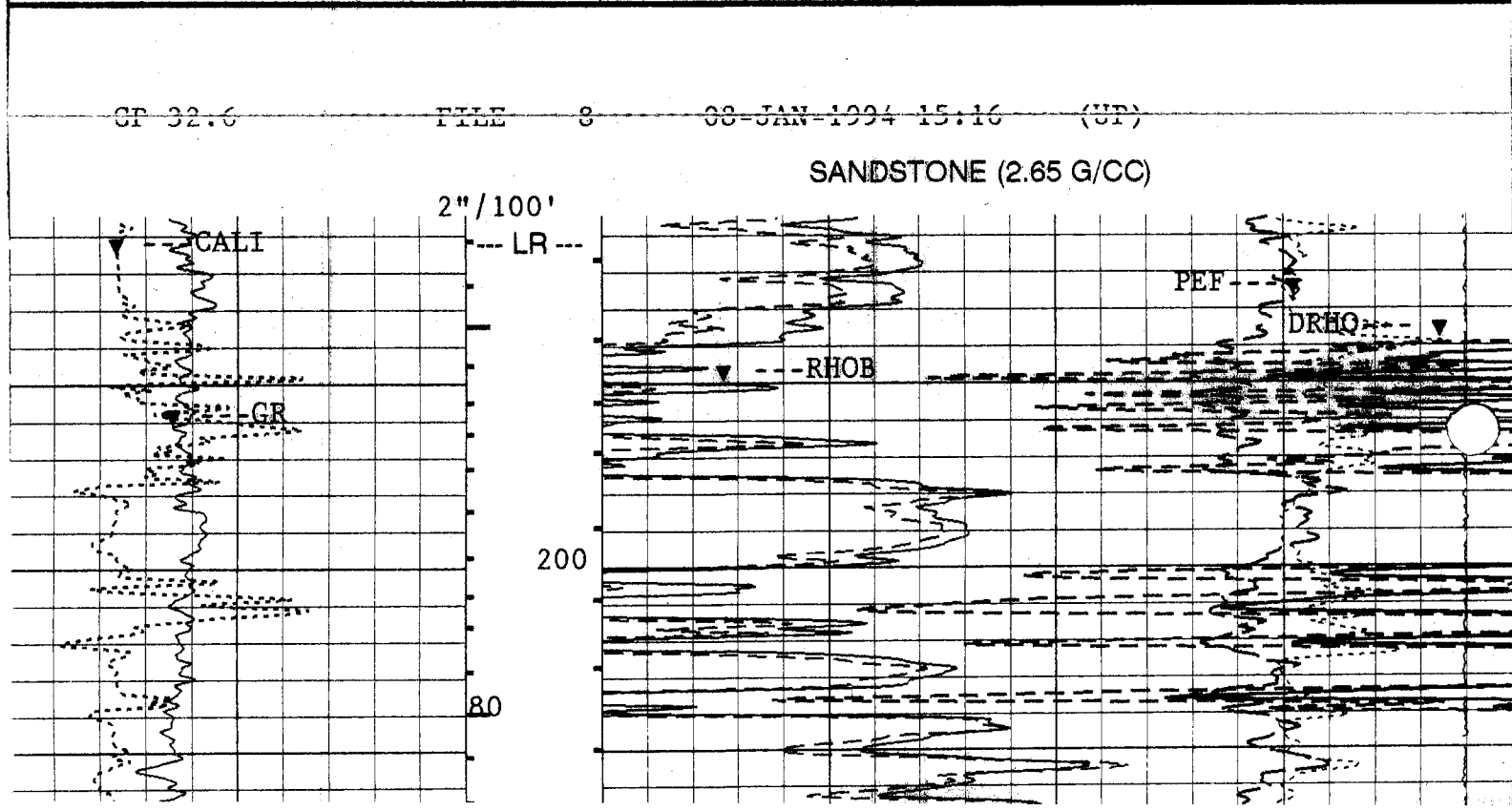
ACCUMULATED INTEGRATION VALUES SUMMARY:

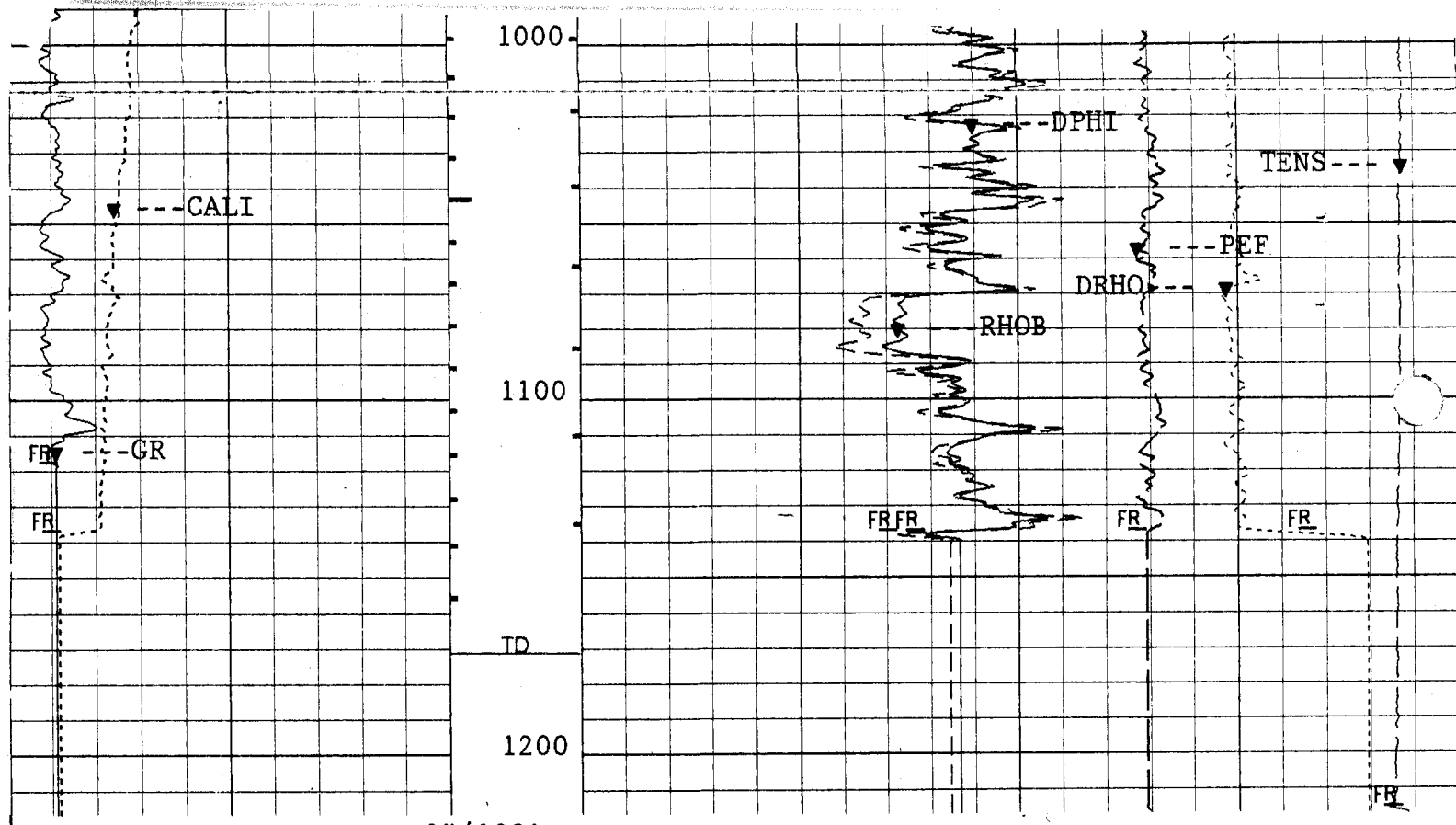
Integrated Hole Volume: 926.666 F3 FROM 1171.00 F TO 104.500 F  
 Integrated Cement Volume: 495.733 F3 FROM 1171.00 F TO 104.500 F  
 (ASSUMING 8.62500 IN O.D. CASING)

EVENT MARK SUMMARY:

OUTPUT	INTERVAL BETWEEN PIPS	DEPTH TRACK EDGE
Integrated Hole Volume	10.0000 F3	LEFT EDGE
Integrated Cement Volume	10.0000 F3	RIGHT EDGE

		TENS(LBF)	
		10000.	0.0
		PEF	
		0.0	6.0
		DRHO(G/C3)	
		.2500	.25000
		DPHI(V/V)	
		.30000	.1000
		RHOB(G/C3)	
		2.0000	3.0000





CP 32.6      FILE 8      08-JAN-1994 14:44      (UP)

CALI (IN)		DPHI (MM)	
10.000	20.000	30000	1000
GR (GAPI)		RHOB (G/C3)	
0.0	200.00	2.0000	3.0000

SENSOR MEASURE POINT TO TOOL ZERO

GR 53.2 FEET	SP 10.3 FEET
IRM 6.0 FEET	IXM 6.0 FEET
ITEM 6.5 FEET	IXD 9.5 FEET
SFB 6.5 FEET	SPA 10.3 FEET
SFV 6.5 FEET	SFC 6.5 FEET
LITH 33.9 FEET	IRD 9.5 FEET
LS 33.9 FEET	LL 33.9 FEET
PARI 33.4 FEET	LU 33.9 FEET
SS2 33.4 FEET	SS1 33.4 FEET
TENS -44.0 FEET	CALI 34.0 FEET

PARAMETERS

NAME	VALUE	UNIT	NAME	VALUE	UNIT
WMUD	8.80000	LB/G	TD	1171.00	F
FCD	8.62500	IN	DHC	CALI	
BFM	LIQU		MDEN	2.65000	G/C3
FD	1.00000	G/C3	DPPM	STAN	
IFRS	20	KHZ	SBR	1.00000	OHMM
MXE2	13.4210	MM/M	DXE2	98.6781	MM/M
MRE2	7.93488	MM/M	DRE2	14.5594	MM/M
MPH2	-.865799	DEG	DPH2	-.061766	DEG
MGF2	1.02359		DGF2	1.00535	
DESP	DISA		SFLE	ALLO	
DCAS	0.0	F	ITEN	ALLO	
DEVI	0.0	DEG	DSES	SING	
IPRO	PHAS		IPHA	NORM	
NCJT	GSRJ		GTSE	TEMP	
SHT	30.0000	DECF	RHT	78.0000	DECF
SPAE	ALLO		BS	12.2500	IN
BHS	OPEN				

ACCUMULATED INTEGRATION VALUES SUMMARY:

Integrated Hole Volume: 926.666 F3      FROM 1171.00 F      TO 104.500 F  
 Integrated Cement Volume: 495.733 F3      FROM 1171.00 F      TO 104.500 F  
 (ASSUMING 8.62500 IN O.D. CASING)

EVENT MARK SUMMARY:

OUTPUT	INTERVAL BETWEEN PIPS	DEPTH TRACK EDGE
Integrated Hole Volume	10.0000 F3	LEFT EDGE
Integrated Cement Volume	10.0000 F3	RIGHT EDGE

