

**Monzeglio, Hope, NMENV**

**From:** Jim Lieb [jlieb@giant.com]  
**Sent:** Monday, May 22, 2006 8:06 AM  
**To:** Chavez, Carl J, EMNRD  
**Cc:** Foust, Denny, EMNRD; Monzeglio, Hope, NMENV  
**Subject:** RE: New API Separator Diagram(s)  
**Attachments:** \_0522080127\_001.pdf

Carl:

I have attached two diagrams of the new API separator to this email.

Jim Lieb  
Giant

**From:** Chavez, Carl J, EMNRD [mailto:CarlJ.Chavez@state.nm.us]  
**Sent:** Wednesday, May 17, 2006 1:36 PM  
**To:** Jim Lieb  
**Subject:** RE: New API Separator Diagram(s)

Jim:

During the OCD/HWB site meeting, we had requested a design diagram(s) of the New API Separator. Could you please send them to OCD/HWB and Denny Foust? Thank you.

Carl J. Chavez, CHMM  
New Mexico Energy, Minerals & Natural Resources Dept.  
Oil Conservation Division, Environmental Bureau  
1220 South St. Francis Dr., Santa Fe, New Mexico 87505  
Office: (505) 476-3491  
Fax: (505) 476-3462  
E-mail: CarlJ.Chavez@state.nm.us  
Website: <http://www.emnrd.state.nm.us/ocd/>  
(Pollution Prevention Guidance is under "Publications")

**From:** Jim Lieb [mailto:jlieb@giant.com]  
**Sent:** Wednesday, May 17, 2006 1:14 PM  
**To:** Monzeglio, Hope, NMENV  
**Cc:** Ed Riege; Cote Edward L.; Steve Morris; Price, Wayne, EMNRD; Cobrain, Dave, NMENV; Chavez, Carl J, EMNRD  
**Subject:** RE: DOUR vs. BOD5 Sampling & Analyses

A conference call 'would have to be arranged for next week as I will be out of the office rest of today and tomorrow. Ed Cote is out of the office most this week also.

Jim

**From:** Monzeglio, Hope, NMENV [mailto:hope.monzeglio@state.nm.us]  
**Sent:** Wednesday, May 17, 2006 12:05 PM  
**To:** Chavez, Carl J, EMNRD; Jim Lieb  
**Cc:** Ed Riege; Cote Edward L.; Steve Morris; Price, Wayne, EMNRD; Foust, Denny, EMNRD; Cobrain, Dave, NMENV  
**Subject:** RE: DOUR vs. BOD5 Sampling & Analyses

5/22/2006

**Z84-15  
API SEPARATOR NO. 1**

TYPE: CONCRETE ABOVE GROUND  
SIZE: 6.5' WIDE x 5' DIA x 36' EFFECTIVE LENGTH  
DESIGN PRESSURE: 2" W.C. VAC. 4" W.C. PRESSURE  
DESIGN TEMPERATURE: 4-110° F.

**SLUDGE COLLECTOR DRIVE**

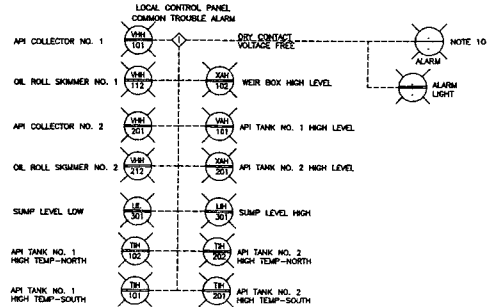
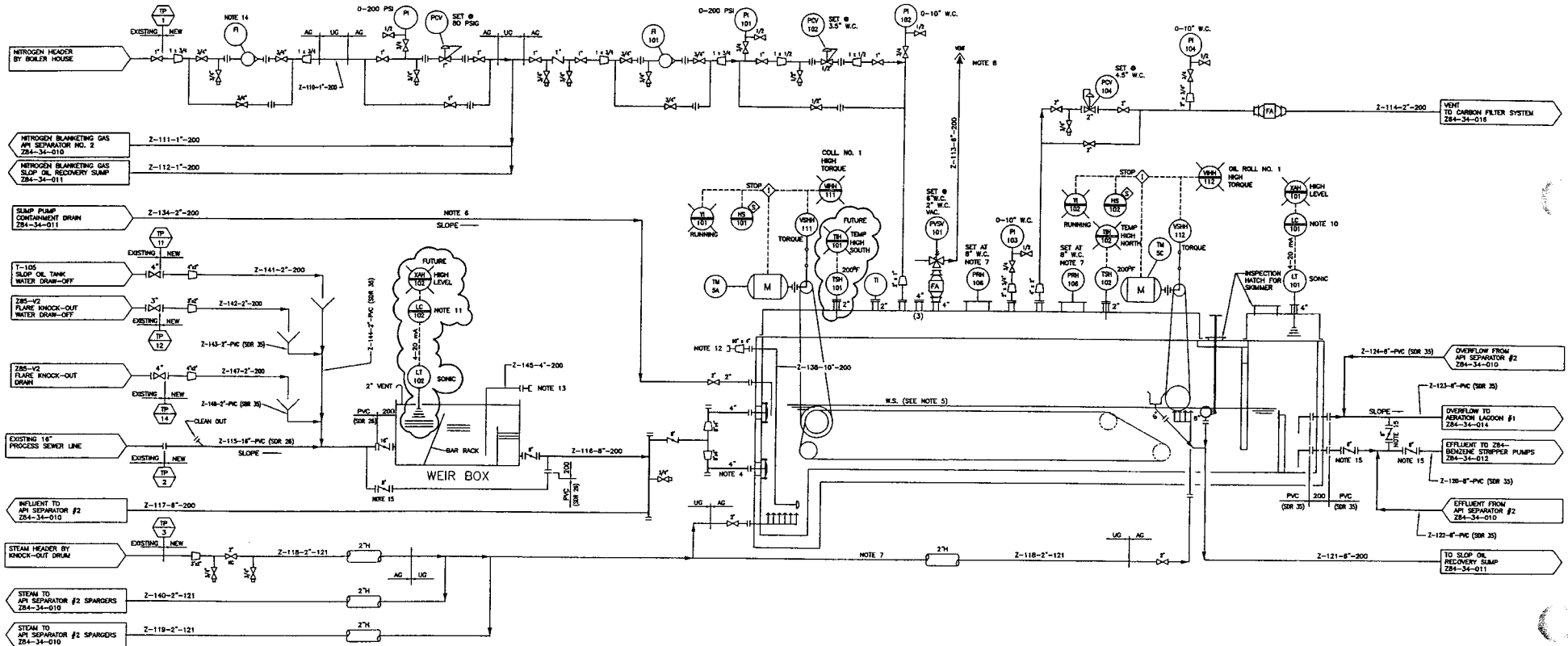
TYPE: CHAIN & FLIGHT  
MOTOR: 0.5 HP., 480V, 3PH., 60HZ., 1.15 SF  
TEFC, SUITED FOR 6900 FT. ELEV.  
FLIGHT SPEED: 2 RPM

**OIL ROLL SKIMMER**

TYPE: OIL ROLL 304 S.S.  
MOTOR: 0.5 HP., 480V, 3PH., 60HZ., 1.15 SF  
TEFC SUITED FOR 6900 FT. ELEV.  
ROLL SPEED: 10 RPM

**SCUM PIPE**

TYPE: 8" DIA. RACK & PINION  
OPERATOR: MANUAL HAND WHEEL  
WITH POSITION INDICATOR



**NOTES:**

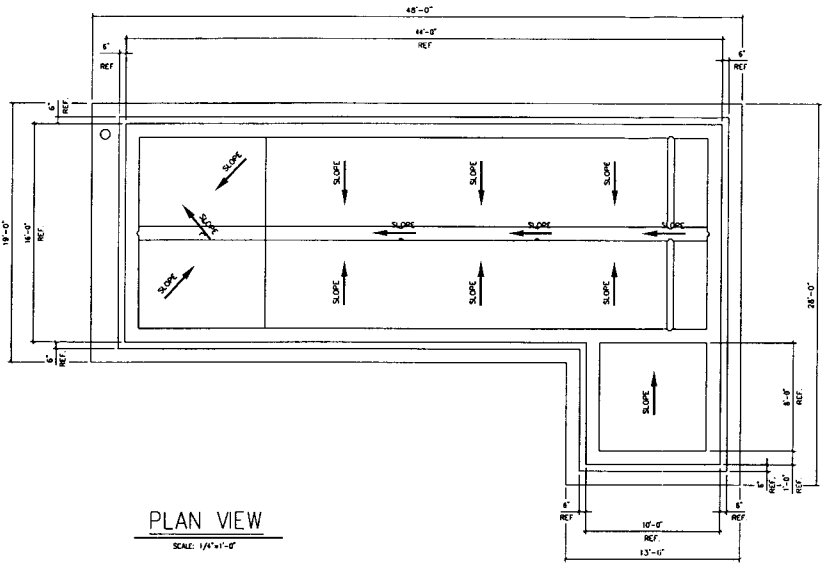
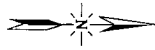
- FOR GENERAL NOTES AND SYMBOLS SEE DRAWINGS Z84-34-006 & 007
- POWER WIRING, SIGNAL WIRING AND INTERLOCKS AS NOTED
- SLUDGE HOPPER CLEAN-OUT SUCTION LINE TO BE SUBMERGED TO WITHIN 6" OF BOTTOM OF HOPPER.
- TANK INLET WALL SLEEVES TO BE 8" FOR FUTURE CONSIDERATION.
- WATER SURFACE ELEVATION IS BASED ON AVE. FLOW OF 150 GPM, FUTURE FLOW OF 500 GPM WATER SURFACE IS 1" HIGHER.
- SLIP OIL SUMP PUMP DRAIN LINE TO BE SUBMERGED BELOW WATER SURFACE, DRAWN FREELY FROM SLOP OIL SUMP PUMP CONTAINMENT.
- WHEN STEAM IS USED TO FACILITATE THE REMOVAL OF SETTLED SLUDGE OR SKIMMED, ONLY WASTE A PRESSURE RELIEF MATH IS TO BE OPENED TO RELIEVE ANY ACCUMULATED INTERNAL PRESSURE.
- VENT TO SAFE AREA.
- ALARM SIGNAL TO GIANT OCS IS VOLTAGE FREE CONTACT.
- EFFLUENT CHAMBER HIGH LEVEL ALARM CONTROLLER SETTINGS:  
ALARM SETTING AT PEAK FLOW: 80.38" = 10.97m  
107.00" = 26.60m
- WEIR BOX HIGH LEVEL ALARM SETTING TO BE DETERMINED BY GIANT.
- SLUDGE HOPPER CLEAN-OUT TO BE ACCESSED BY VACUUM TRUCK
- SLUDGE HOPPER CLEAN-OUT WATER RETURN FROM VACUUM TRUCK AND PIPE SLOTTED IN SLUDGE HOPPER
- FI- TO BE LOCATED BY BOILER HOUSE TIE-IN
- BUTTERFLY VALVES ON PVC (SDR 26 & 35) LINES TO BE CARBON STEEL.

REFERENCE DWG. TITLE	REF. DWG. No.	REV.	REVISION DESCRIPTION	RFC No.	DATE
			IFC & REVISED DRAWING NUMBERS RCC #6770	998-9011-39	3/13/02
			ISSUED FOR APPROVAL RCC #6770	998-9011-39	1/29/02

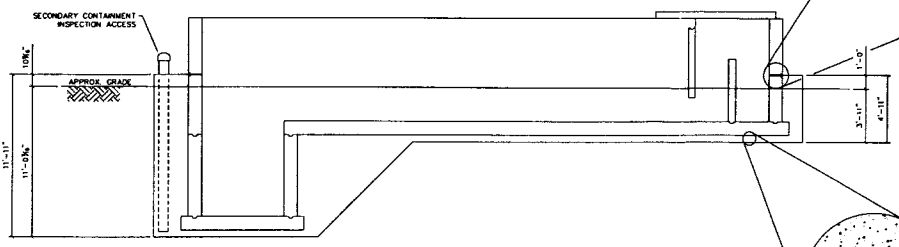
**PROCESS & INSTRUMENTATION DIAGRAM  
API SEPARATOR BASINS AND SLOP OIL  
RECOVERY SUMP**

DRN. BY: TWB	DATE: 12/12/01	RFE NO.: 998-9011-39
CHK'D. BY: TM	DATE: 12/13/01	CAD REF:
APP'D. BY: BL	DATE: 2/21/02	Z84-34-009
DRAWING NO.:	Z84-34-009	

REV 0



**PLAN VIEW**  
SCALE: 1/4" = 1'-0"



**ELEVATION**  
SCALE: 1/4" = 1'-0"

ISSUED FOR CONSTRUCTION	DATE	DESCRIPTION	BY	APPROV
CINIZA REFINERY		<b>GIANT</b>		GALLUP NEW MEXICO
REFINING, CO. A DIVISION OF GIANT INDUSTRIES				
SECONDARY CONTAINMENT API SEPARATOR BASINS				
SCALE:	1/4" = 1'-0"		APPROV:	
DATE:	11/25/03		APPROV. DATE:	
DRN:	MS		REV	
CHKD:	DWG. NUM. 264-Q3-117A		REV	0