

September 20, 2011

Mr. John Kieling
Chief
New Mexico Environment Department
2905 Rodeo Park Drive East, Building 1
Santa Fe, NM 87505-6303


RE: Western Refining Company Southwest Inc., Gallup Refinery
EPA ID # NMD000333211

Dear Mr. Kieling:

Recently the Gallup refinery removed 21,000 cubic yards of overburden from the STP-1 construction site. The soil came from a virgin hillside north of EP-1. To our knowledge there has never been any refinery related activities in this area. Several storage locations were made as shown on Figure 1. The piles were sampled and all seven composite sample result constituents are attached as Attachment 1. All samples came back non detect (ND) for EPA Method 8260B volatiles except for S1-B-Pile which was .077 mg/kg for 4-Isopropyltoluene. The Hall Analysis Lab Report dated September 15, 2011 is attached.

Upon NMED approval, Western Refining would like to use the excavated soil for fill material and for evaporation pond berm repair, provided it meets OCD approval for any major repairs. If you have any questions, or if we can be of further service to you, please do not hesitate to call me at (505) 722-0217.

Sincerely,
Western Refining Company

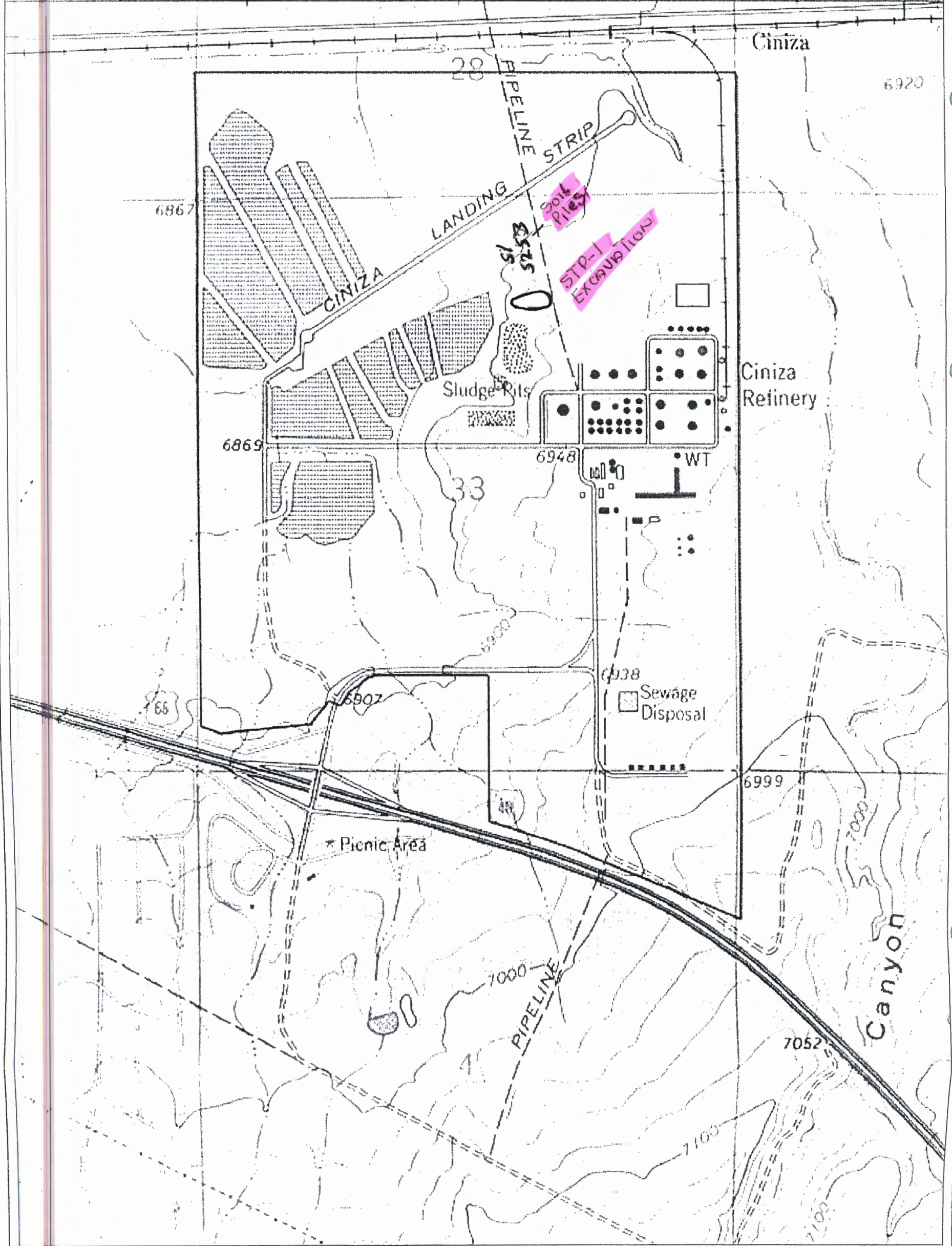


Ed Riege
Environmental Manager

Attachments



cc: K. Van Horn NMED HWB
C. Chavez, OCD

732 4355 III SW (PINEDALE) 733 734 25'



Base map: USGS Topographical Map - Ciniza Quadrangle (Revised 1980)

EXPLANATION

-  PROPERTY BOUNDARY
-  SOIL INVESTIGATION AREA



0 ~1,000'

Trihydro
CORPORATION
1252 Commerce Drive
Laramie, Wyoming 82070
www.trihydro.com
(P) 307745.7474 (F) 307745.7729

FIGURE 1

TOPOGRAPHIC MAP OF GALLUP REFINERY SITE

**WESTERN REFINING
GALLUP REFINERY
GALLUP, NEW MEXICO**

Drawn By: REP Checked By: RM Scale: 1" = ~1,000' Date: 12/28/09 File: 072TOPO-200912