



Facility: Western Refining, Gallup Refinery

Photo #: 1

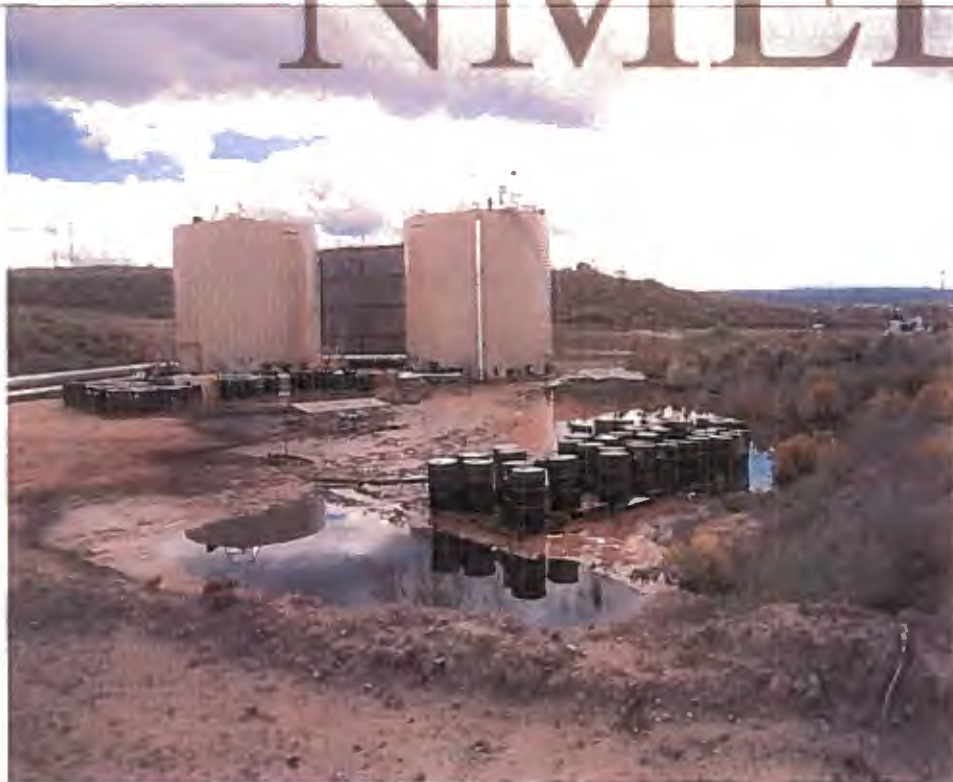
Date/Time: 10/3/11 @ 1444 hours.

Location: Tank 35. Facing north.

Description: Photo showing the overflow of process waste water due to heavy rain event the previous night. This process waste water goes to the API Separator.

Violation(s): NONE. The facility notified the State of the occurrence.

NMIED



Facility: Western Refining, Gallup Refinery

Photo #: 2

Date/Time: 10/3/11 @ 1450 hours.

Location: Tank 35 (gray), Tanks 27 & 28. Facing south.

Description: Photo showing the area covered with process waste water from the overflow. The 90-day accumulation area is near the two front tanks (27&28).

Violation(s): NONE.